



COMMONWEALTH OF DOMINICA

CONSUMER

PRICE

INDICES



1998



CENTRAL STATISTICAL OFFICE
Ministry of Finance, Industry & Planning
Roseau, Dominica



PREFACE

The Consumer Price Index is based on the 1992 Household Expenditure Survey which covered the four most populous parishes or population zones in Dominica: St. George, St. Paul, St. Patrick and St. Andrew. From a total of 13,570 households (total of all four parishes), eight hundred and fifty-five (855) were selected for the survey. Five hundred and seventy-four (574) questionnaires were completed, representing a 67.1% response rate. The number of items selected from the 1992 survey was more than twice that of 1982 reflecting a more detailed Consumer Price Index. A total of three hundred (300) items came from eighty-one (81) sources. These sources excluded Rent, which was measured in seven categories from forty-four (44) households.

The addition of new sub-groups and the increase/decrease in the weights of others showed the change in consumer spending patterns, over the last ten years. The shifts (decreases) in group indices FOOD, HOUSING and UTILITIES, FURNITURE and HOUSEHOLD EQUIPMENT, and ALCOHOLIC BEVERAGES AND TOBACCO were absorbed by movements (increases) in TRANSPORTATION, CLOTHING and FOOTWEAR and MISCELLANEOUS EXPENSES.

A national expenditure survey facilitates the compiling of a Consumer Price Index where a basis of consumer spending is measured. The All Items Index is calculated out of 1000 and is segmented into group and sub-group indices. Following a household expenditure survey, weights are derived by calculating the total value of items consumed to the total quantity consumed.

The public often makes the error of assuming that the monthly and/or yearly Consumer Price Index measures the prices of all items on retail shelves and every service available. It must be explained that the index covers selected consumer items and services based on a Household Expenditure Survey. Such items and services rarely change (in the Index) until another survey is conducted. The price the consumer pays for these items are recorded on a monthly basis and within a specific period.

From the 1992 survey, new sub-groups were represented as follows:- Repairs to House, Insurance Payments, Laundry and Dry Cleaning, Services, House Cleaning, Repairs to Equipment, Purchase of Motor Vehicles, Transport Insurance and Fees, Clothing Accessories and Personal Life Insurance. February 1994 was established as the base in calculating this new series.

...  ...
CHIEF STATISTICIAN (AG.)

5th February, 1999



CONTENTS

	PAGE NO
PREFACE	i
CONTENTS	ii
REVIEW	iii-iv
TABLE	
1. MONTHLY CONSUMER PRICE INDICES 1993-1998	1
2. MONTHLY PERCENTAGE CHANGES: 1993-1998	2
3. ALL ITEMS INDEX BY YEAR AND MONTH 1985-1998	3
4. MONTHLY INDEX OF FOOD AND NON-FOOD GROUP: 1987-1998	4
5. PERCENTAGE CHANGE IN GROUP INDICES 1987 -1998	5-6
6. CONSUMER PRICE INDICES BY GROUP AND SUB-GROUPS FEB. 1987- FEB 1998	7
6A. PERCENTAGE CHANGE FROM BASE PERIOD TO FEBRUARY 1998 AND DECEMBER 1998	8
7. PRICE MOVEMENTS OF SELECTED ITEMS: FEB. 1991 TO FEB. 1998	9-10
8. PRICE MOVEMENTS OF SELECTED ITEMS: FEBRUARY 1994 BASE COMPARED WITH DECEMBER 1997 AND 1998 PRICES	11-18
CHARTS	
1. MONTHLY ALL ITEMS INDICES: 1998	19
2. PERCENTAGE CHANGE IN ALL ITEMS INDICES 1985-1998	20
3. PERCENTAGE CHANGE IN GROUP INDICES 1997-1998	21
4. GROUP INDICES: 1997 AND 1998	22

**1998
REVIEW**

CONSUMER PRICE INDEX

The All Items Index recorded 105.63 for the year, registering a 1.0 percent increase over the last year (Tables 1 and 5). December recorded the highest monthly percentage increase, 0.77, followed by July with 0.63. For September the All Items remained stable, a trend which last occurred in June 1995 (Table 2). The largest decrease, 0.40 percent was registered in January, while the lowest increase, 0.09 was reflected in June.

Over the year the highest group index percentage increase, 6.1, was recorded in MISCELLANEOUS EXPENSES. This was followed by an increase of 1.6 percent in the ALCOHOLIC BEVERAGES AND TOBACCO group index. All other group increases were less than 1.0 percent. The CLOTHING AND FOOTWEAR group index recorded a slight 0.04 increase, the lowest in the last eleven years. The TRANSPORTATION group recorded a first-time decline, 1.4 percent, for the same period. This resulted from a continuous decline in airplane ticket to North America during the winter season. FOOD decreased by 0.05 percent. However larger percentage decreases of 3.8 and 1.8 were recorded in 1994 and 1990 respectively.

From the February 1994 base period to December 1998 the MISCELLANEOUS EXPENSES (comprising the Medicines and Health Expenses, Educational Expenses and Personal Care and Supplies sub-group indices) increased by 20.8 percent (Table 6A). ALCOHOLIC BEVERAGES AND TOBACCO rose by 14.1 percent over the same period. The FOOD and TRANSPORTATION group indices followed almost similar movements registering percentage increases of 5.6 and 5.2 respectively. CLOTHING AND FOOTWEAR recorded a 4.5 percent increase. HOUSING AND UTILITIES was the least affected, reflecting a 2.7 percent group movement. FURNITURE AND HOUSEHOLD EQUIPMENT recorded a 0.6 percent decline.

During the same period (February 1994 base period to December 1998) significant sub-group percentage increases were noted in Educational Expenses, 41.9; Medicines and Health Expenses, 24.0; Other Miscellaneous Expenses 18.7; Dairy Products, 17.2; Meat (fresh, chill, frozen) 16.4; Alcoholic Beverages, 15.0; Non-Alcoholic Beverages, 14.1; Fruit and Fruit Preparations, 12.6; Cereals, 11.9; Purchase of Motor Vehicles, 11.4; Tobacco Products 11.2. and Personal Care and Supplies, 10.5. Deflation affected sub-group indices Recreational Equipment, 16.3; Kitchen Equipment, 8.3 and Laundry and Dry Cleaning Services 7.3.

From December 1997 to December 1998 (Table 8), items reflecting a 10 to 30 percent price increase were chicken wings, instant coffee, pumpkins, sweet peppers, yams, peas, canned vegetables, grapefruits, kerosene, steel, living room furniture, carpet, semi-formal dress-making material, girl's and boy's casual shoes, women's hair dressing liquid medicine, unshelled peanuts and text books. Items recording a 31 to 51 percent increase were celery, parsley, chives, oranges, ginger, dentist fees and magazines; Items registering more than 52 percent price increase were lettuce, water rates and white potatoes.

From the 1994 base period to December 1998 (Table 8), 25 to 50 percent price increase was noted in chickens wings, salted pork, evaporated milk, butter, packaged rice, instant coffee, white potatoes, nutmegs, ginger, infant cereal, rum, gin and vehicle license. For the same period a 50 to 100 percent rise was noted in salted beef, carrots, celery, parsley, chives, nutmegs, ginger, water rates and vitamin supplement. Imported pork, tomatoes, lettuce, oranges, sewerage rates and school fees registered more than 100 percent increase.

TABLE 1: MONTHLY CONSUMER PRICE INDICES
1993-1998

FEBRUARY 1994=100.00

GROUPS	WEIGHTS	YEAR	JAN	FEB	MAR	APR	MAY	JUN	JUL	AUG	SEP	OCT	NOV	DEC	AVG.
FOOD	401.81	1993	100.66	100.51	97.47	95.81	96.94	104.43	101.22	101.20	99.91	99.46	100.57	100.77	99.91
		1994	99.11	100.00	95.47	94.12	93.95	93.86	93.52	95.66	96.50	97.62	96.76	96.91	96.12
		1995	97.28	97.96	97.49	97.56	98.43	98.24	97.89	97.34	97.73	96.73	96.89	99.27	97.73
		1996	98.86	98.01	98.09	98.60	98.74	98.98	100.21	99.43	100.77	99.84	101.29	101.93	99.56
		1997	102.05	101.64	102.55	102.57	103.38	103.22	103.59	103.94	103.85	103.63	104.31	103.49	103.19
		1998	102.75	102.39	102.43	101.96	101.69	101.55	103.11	104.47	104.04	103.49	104.18	105.61	103.14
ALCOHOLIC BEVERAGES & TOBACCO	16.16	1993	98.42	98.51	97.65	97.06	97.66	97.65	98.12	98.17	99.87	99.23	99.65	99.65	98.47
		1994	100.00	100.00	99.96	99.96	99.96	99.96	99.61	101.28	101.67	101.72	101.27	101.27	100.55
		1995	100.22	99.96	99.83	97.86	100.36	100.85	100.95	100.95	100.93	100.92	103.20	105.38	100.95
		1996	107.61	107.61	108.51	108.38	108.47	108.66	109.87	111.98	112.93	114.22	113.86	112.39	110.37
		1997	112.87	111.70	111.50	111.58	111.70	111.69	112.92	113.07	114.35	113.06	113.96	113.96	112.70
		1998	114.24	114.70	114.70	114.70	114.66	114.44	114.51	114.36	114.42	114.42	114.42	114.06	114.47
HOUSING & UTILITIES	133.71	1993	99.73	99.66	99.83	99.96	100.04	100.32	100.03	99.97	99.99	99.60	99.67	99.70	99.88
		1994	100.12	100.00	100.06	100.05	99.75	99.93	100.35	100.27	100.10	100.16	100.36	100.29	100.12
		1995	100.40	100.34	100.30	100.31	100.09	100.60	100.63	99.76	99.00	99.35	99.33	99.29	99.95
		1996	99.38	99.56	99.90	100.04	99.95	99.95	99.51	99.75	99.95	100.65	100.62	100.77	100.00
		1997	100.66	100.50	102.25	101.99	100.85	101.24	101.19	101.45	101.53	101.48	102.74	102.90	101.57
		1998	102.30	102.39	102.59	102.64	102.77	102.81	102.47	102.39	102.37	102.35	102.47	102.73	102.52
FURNITURE & HOUSEHOLD EQUIPMENT	57.79	1993	96.56	96.56	96.56	96.56	96.56	96.56	96.56	96.56	96.56	96.56	100.33	99.62	97.13
		1994	100.00	100.00	99.83	99.83	99.98	99.98	98.46	96.86	97.47	97.55	97.72	97.59	98.77
		1995	97.26	97.35	96.80	96.57	96.32	95.45	97.03	96.87	96.98	96.57	96.55	95.71	96.62
		1996	95.69	95.42	95.26	95.46	95.52	95.70	95.90	95.92	95.62	95.70	95.75	95.84	95.65
		1997	95.92	96.00	96.30	96.41	96.47	96.47	96.72	96.97	96.92	96.62	97.07	96.97	96.57
		1998	97.39	97.39	96.65	96.65	96.67	96.73	96.57	95.99	96.82	97.90	98.85	99.38	97.25
TRANSPORTATION	162.02	1993	99.20	100.00	100.00	100.00	100.00	100.00	100.00	100.00	100.00	100.00	100.00	100.00	99.93
		1994	100.00	100.00	100.00	101.16	101.16	101.16	102.66	102.66	102.07	102.34	102.34	102.29	101.49
		1995	102.29	102.15	102.15	102.12	100.95	100.84	104.51	104.71	103.03	102.13	102.13	104.36	102.61
		1996	105.31	105.67	105.67	105.80	105.14	104.53	106.22	106.40	106.40	106.09	106.09	106.95	105.86
		1997	108.08	108.08	107.22	106.88	106.51	106.48	106.56	105.68	105.45	105.98	105.41	105.98	106.53
		1998	105.52	104.62	103.97	104.22	104.53	105.46	105.83	105.18	104.56	105.86	105.33	105.23	105.03
CLOTHING & FOOTWEAR	68.35	1993	90.94	90.81	95.00	95.38	93.10	96.38	94.44	94.93	94.86	96.19	96.86	99.12	94.83
		1994	99.97	100.00	101.72	101.72	101.72	101.72	101.06	101.17	101.15	100.42	103.75	103.79	101.52
		1995	102.80	102.09	102.14	102.44	102.19	102.33	104.41	103.82	103.25	102.55	102.37	102.71	102.76
		1996	104.21	103.78	103.91	104.09	103.82	104.35	104.07	103.74	103.20	103.25	103.25	103.29	103.75
		1997	103.63	103.63	103.85	103.85	103.73	104.00	104.29	104.38	104.38	104.52	104.54	104.54	104.11
		1998	104.54	104.54	104.30	104.70	104.70	104.34	104.34	103.51	103.49	103.42	103.42	104.51	104.15
MISCELLANEOUS EXPENSES	160.16	1993	97.77	97.73	97.62	97.42	97.35	97.38	97.38	97.06	99.89	100.04	100.11	100.13	98.32
		1994	99.96	100.00	99.60	101.19	101.19	101.19	103.89	104.25	104.32	104.18	104.03	104.10	102.33
		1995	104.10	104.08	104.08	104.61	105.40	105.83	106.11	105.99	106.63	106.38	106.31	106.37	105.49
		1996	106.46	106.60	106.61	106.68	106.74	108.47	107.65	107.89	106.94	107.01	107.89	107.69	107.22
		1997	108.12	108.33	108.07	108.33	108.33	108.27	108.30	109.00	116.07	116.07	116.59	116.69	111.01
		1998	116.69	116.69	116.69	116.69	116.69	116.77	116.95	117.31	118.74	119.90	119.96	120.78	117.82
ALL ITEMS	1000.00	1993	98.89	98.89	97.92	97.21	97.54	101.06	99.49	99.47	99.34	99.19	99.96	100.20	99.10
		1994	99.63	100.00	98.23	98.13	98.03	98.02	98.48	99.32	99.59	100.03	99.92	99.96	99.11
		1995	100.03	100.21	99.99	100.08	100.35	100.35	101.09	100.72	100.57	99.96	100.03	101.36	100.40
		1996	101.51	101.23	101.33	101.61	101.54	101.86	102.45	102.25	102.63	102.33	103.05	103.42	102.10
		1997	103.74	103.57	104.02	103.99	104.10	104.09	104.30	104.47	105.56	105.52	106.00	105.79	104.60
		1998	105.37	105.10	104.98	104.86	104.82	104.91	105.57	105.97	105.97	106.20	106.47	107.29	105.63



TABLE 2. CONSUMER PRICE INDEX
MONTHLY PERCENTAGE CHANGES
1993-1998

GROUPS	WEIGHTS	YEAR	JAN	FEB	MAR	APR	MAY	JUN	JUL	AUG	SEP	OCT	NOV	DEC
FOOD	401.81	1993	0.81	-0.15	-3.02	-1.70	1.18	7.73	-3.07	-0.02	-1.27	-0.45	1.12	0.20
		1994	-1.65	0.90	-4.53	-1.41	-0.18	-0.10	-0.36	2.29	0.88	1.18	-0.88	0.18
		1995	0.38	0.70	-0.48	0.07	0.89	-0.19	-0.36	-0.56	0.40	-1.02	0.17	2.48
		1996	-0.41	-0.86	0.08	0.52	0.14	0.24	1.24	-0.78	1.35	-0.92	1.45	0.63
		1997	0.12	-0.40	0.90	0.02	0.79	-0.15	0.36	0.34	-0.09	-0.21	0.66	-0.79
		1998	-0.72	-0.35	0.04	-0.46	-0.26	-0.14	1.54	1.32	-0.41	-0.53	0.67	1.37
ALCOHOLIC BEVERAGES & TOBACCO	16.18	1993	0.44	0.09	-0.87	-0.60	0.62	-0.01	0.48	0.05	1.73	-0.64	0.42	0.00
		1994	0.35	0.00	-0.04	0.00	0.00	0.00	-0.35	1.68	0.39	0.05	-0.44	0.00
		1995	-1.04	-0.26	-0.13	-1.97	2.55	0.49	0.10	0.00	-0.02	-0.01	2.26	2.11
		1996	2.12	0.00	0.84	-0.12	0.08	0.18	1.11	1.92	0.85	1.14	-0.32	-1.29
		1997	0.42	-1.04	-0.18	0.07	0.11	-0.01	1.10	0.13	1.13	-1.13	0.80	0.00
		1998	0.25	0.40	0.00	0.00	-0.03	-0.19	0.06	-0.13	0.05	0.00	0.00	-0.31
HOUSING & UTILITIES	133.71	1993	-0.23	-0.07	0.17	0.13	0.08	0.28	-0.29	-0.06	0.02	-0.39	0.07	0.03
		1994	0.42	-0.12	0.06	-0.01	-0.30	0.18	0.42	-0.08	-0.17	0.06	0.20	-0.07
		1995	0.11	-0.06	-0.04	0.01	-0.22	0.51	0.03	-0.86	-0.76	0.35	-0.02	-0.04
		1996	0.09	0.18	0.34	0.14	-0.09	0.00	-0.44	0.24	0.20	0.70	-0.03	0.15
		1997	-0.10	-0.16	1.74	-0.25	-1.12	0.39	-0.05	0.26	0.08	-0.05	1.24	0.16
		1998	-0.58	0.09	0.20	0.05	0.13	0.04	-0.33	-0.08	-0.02	-0.02	0.12	0.25
FURNITURE & HOUSEHOLD EQUIPMENT	57.79	1993	-0.01	0.00	0.00	0.00	0.00	0.00	0.00	0.00	0.00	0.00	3.90	-0.71
		1994	0.38	0.00	-0.17	0.00	0.15	0.00	-1.52	-1.63	0.63	0.08	0.17	-0.13
		1995	-0.34	0.09	-0.56	-0.24	-0.26	-0.90	1.66	-0.16	0.11	-0.42	-0.02	-0.87
		1996	-0.02	-0.28	-0.17	0.21	0.06	0.19	0.21	0.02	-0.31	0.08	0.05	0.09
		1997	0.08	0.08	0.31	0.11	0.06	0.00	0.26	0.26	-0.05	-0.31	0.47	-0.10
		1998	0.43	0.00	-0.76	0.00	0.02	0.06	-0.17	-0.60	0.86	1.12	0.97	0.54
TRANSPORT- ATION	162.02	1993	0.00	0.81	0.00	0.00	0.00	0.00	0.00	0.00	0.00	0.00	0.00	0.00
		1994	0.00	0.00	0.00	1.16	0.00	0.00	1.48	0.00	-0.57	0.26	0.00	-0.05
		1995	0.00	-0.14	0.00	-0.03	-1.15	-0.11	3.64	0.19	-1.60	-0.87	0.00	2.18
		1996	0.91	0.34	0.00	0.12	-0.62	-0.58	1.62	0.17	0.00	-0.29	0.00	0.81
		1997	1.06	0.00	-0.80	-0.32	-0.35	-0.03	0.08	-0.83	-0.22	0.50	-0.54	0.54
		1998	-0.43	-0.85	-0.62	0.24	0.30	0.89	0.35	-0.61	-0.59	1.24	-0.50	-0.09
CLOTHING & FOOTWEAR	68.35	1993	3.88	-0.14	4.61	0.40	-2.39	3.52	-2.01	0.52	-0.07	1.40	0.70	2.33
		1994	0.86	0.03	1.72	0.00	0.00	0.00	-0.65	0.11	-0.02	-0.72	3.32	0.04
		1995	-0.95	-0.69	0.05	0.29	-0.24	0.14	2.03	-0.57	-0.55	-0.68	-0.18	0.33
		1996	1.46	-0.41	0.13	0.17	-0.26	0.51	-0.27	-0.32	-0.52	0.05	0.00	0.04
		1997	0.32	0.00	0.21	0.00	-0.12	0.26	0.28	0.09	0.00	0.13	0.02	0.00
		1998	0.00	0.00	-0.23	0.38	0.00	-0.34	0.00	-0.80	-0.02	-0.07	0.00	1.05
MISCELLANEOUS EXPENSES	160.16	1993	-1.16	-0.04	-0.11	-0.20	-0.07	0.03	0.00	-0.33	2.92	0.15	0.07	0.02
		1994	-0.17	0.04	-0.40	1.60	0.00	0.00	2.67	0.35	0.07	-0.13	-0.14	0.07
		1995	0.00	-0.02	0.00	0.51	0.76	0.41	0.26	-0.11	0.60	-0.23	-0.07	0.06
		1996	0.08	0.13	0.01	0.07	0.06	1.62	-0.76	0.22	-0.88	0.07	0.82	-0.19
		1997	0.40	0.19	-0.24	0.24	0.00	-0.06	0.03	0.65	6.49	0.00	0.45	0.09
		1998	0.00	0.00	0.00	0.00	0.00	0.07	0.15	0.31	1.22	0.98	0.05	0.68
ALL ITEMS	1000.00	1993	0.35	0.00	-0.98	-0.73	0.34	3.61	-1.55	-0.02	-0.13	-0.15	0.78	0.24
		1994	-0.57	0.37	-1.77	-0.10	-0.10	-0.01	0.47	0.85	0.27	0.44	-0.11	0.04
		1995	0.07	0.18	-0.22	0.09	0.27	0.00	0.74	-0.37	-0.15	-0.61	0.07	1.33
		1996	0.15	-0.28	0.10	0.28	-0.07	0.32	0.58	-0.20	0.37	-0.29	0.70	0.36
		1997	0.31	-0.16	0.43	-0.03	0.11	-0.01	0.20	0.16	1.04	-0.04	0.45	-0.20
		1998	-0.40	-0.26	-0.11	-0.11	-0.04	0.09	0.63	0.38	0.00	0.22	0.25	0.77

**TABLE 3. ALL ITEM INDICES BY YEAR AND MONTH
1985-1998**

FEBRUARY 1994 = 100.00

YEAR	JAN	FEB	MAR	APR	MAY	JUN	JUL	AUG	SEP	OCT	NOV	DEC	YEAR INDEX	% CHANGE
1985	70.14	70.69	70.83	70.41	70.62	70.90	71.45	71.73	71.94	72.73	72.73	73.28	71.45	2.10
1986	72.38	72.24	71.68	72.10	72.38	72.73	73.36	74.54	75.86	75.24	75.38	75.52	73.62	3.04
1987	75.73	75.94	76.08	77.19	77.33	77.75	77.89	78.17	76.29	77.34	78.94	77.76	77.20	4.86
1988	77.97	77.34	76.02	76.58	77.48	77.41	78.16	79.69	79.90	80.31	84.34	81.77	78.91	2.22
1989	81.63	81.84	83.09	83.71	84.76	84.41	84.97	83.65	86.71	87.20	88.80	88.45	84.94	7.64
1990	86.65	86.93	84.22	84.50	86.24	86.10	87.07	86.79	88.46	90.82	91.58	92.55	87.66	3.20
1991	92.27	90.78	91.38	92.36	91.02	91.86	92.30	92.51	93.95	93.26	93.96	94.40	92.50	5.52
1992	95.16	95.54	96.75	97.08	97.15	97.55	99.10	98.33	98.50	98.57	98.51	98.55	97.57	5.48
1993	98.89	98.89	97.92	97.21	97.54	101.06	99.49	99.47	99.34	99.19	99.96	100.20	99.10	1.57
1994	99.63	100.00	98.23	98.13	98.03	98.02	98.48	99.32	99.59	100.03	99.92	99.96	99.11	0.01
1995	100.03	100.21	99.99	100.08	100.35	100.35	101.09	100.72	100.57	99.96	100.03	101.36	100.40	1.31
1996	101.51	101.23	101.33	101.61	101.54	101.86	102.45	102.25	102.63	102.33	103.05	103.42	102.10	1.69
1997	103.74	103.57	104.02	103.99	104.10	104.09	104.30	104.47	105.56	105.52	106.00	105.79	104.60	2.42
1998	105.37	105.10	104.98	104.86	104.82	104.91	105.57	105.97	105.97	106.20	106.47	107.29	105.63	0.98

TABLE 4: MONTHLY INDEX OF FOOD AND NON-FOOD GROUPS
1987 - 1998

GROUPS	February 1994=100.00											
	1987	1988	1989	1990	1991	1992	1993	1994	1995	1996	1997	1998
Jan Food	75.2	79.3	85.0	85.5	92.8	94.1	100.7	99.1	97.3	98.9	102.1	102.8
Non-food	76.1	77.2	79.4	87.8	92.3	96.1	97.7	100.0	101.9	103.3	104.9	107.1
Feb Food	75.7	77.7	84.7	86.2	88.5	94.3	100.5	100.0	98.0	98.0	101.6	102.4
Non-food	76.1	77.3	80.1	87.8	93.0	96.6	97.9	100.0	101.7	103.4	104.9	106.9
Mar Food	76.1	74.7	86.7	80.8	87.9	96.1	97.5	95.5	97.5	98.1	102.6	102.4
Non-food	76.3	77.3	80.8	87.1	94.3	97.4	98.3	100.1	101.7	103.5	105.0	106.7
Apr Food	78.0	75.0	87.1	81.8	90.0	96.8	95.8	94.1	97.6	98.6	102.6	102.0
Non-food	76.8	78.0	81.5	86.8	94.4	97.4	98.3	100.8	101.8	103.6	104.9	106.8
May Food	78.1	76.9	89.2	84.1	87.2	96.9	96.9	94.0	98.4	98.7	103.4	101.7
Non-food	77.0	78.1	81.7	88.1	94.2	97.5	98.1	100.8	101.6	103.4	104.6	106.9
Jun Food	79.6	77.7	88.3	83.6	88.6	97.9	104.4	93.9	98.2	99.0	103.2	101.6
Non-food	76.6	77.4	81.9	88.3	94.6	97.4	98.6	100.8	101.8	103.8	104.7	107.2
Jul Food	80.3	79.7	88.8	85.5	89.4	101.0	101.2	93.5	97.9	100.2	103.6	103.1
Non-food	76.4	77.3	82.5	88.6	94.8	97.8	98.3	101.8	103.2	104.0	104.8	107.2
Aug Food	81.0	82.1	85.7	84.3	89.5	99.3	101.2	95.7	97.3	99.4	103.9	104.5
Non-food	76.3	78.2	82.4	89.0	95.1	97.9	98.2	101.8	103.0	104.1	104.8	107.0
Sep Food	76.9	82.5	85.3	87.3	92.2	99.4	99.9	96.5	97.7	100.8	103.9	104.0
Non-food	76.1	78.2	88.1	89.7	95.5	98.1	99.0	101.7	102.5	103.9	106.7	107.3
Oct Food	79.1	83.3	87.1	87.6	90.7	99.4	99.5	97.6	96.7	99.8	103.6	103.5
Non-food	76.3	78.4	87.6	93.6	95.4	98.2	99.1	101.7	102.1	104.0	106.8	108.0
Nov Food	81.4	92.6	90.5	89.5	92.3	99.2	100.6	96.8	96.9	101.3	104.3	104.2
Non-food	77.3	78.5	87.9	93.6	95.4	98.2	99.6	102.0	102.1	104.2	106.9	108.0
Dec Food	78.9	86.2	89.6	92.5	92.8	100.1	100.8	96.9	99.3	101.9	103.5	105.6
Non-food	77.2	79.0	87.9	92.9	95.8	97.7	99.8	102.0	102.8	104.4	107.1	108.4
AVG. Food	78.3	80.6	87.3	85.7	90.2	97.9	99.9	96.1	97.7	99.6	103.2	103.1
Non-food	76.5	77.9	83.5	89.4	94.6	97.5	98.6	101.1	102.2	103.8	105.5	107.3

TABLE 5. PERCENTAGE CHANGE IN GROUP INDICES

1987 - 1998

February 1994 = 100.0

GROUP	WEIGHTS	1987	%CHANGE '86-'87	1988	%CHANGE '87-'88	1989	%CHANGE '88-'89	1990	%CHANGE '89-'90	1991	%CHANGE '90-'91	1992	%CHANGE '91-'92
FOOD	401.81	78.3	3.3	80.6	2.9	87.3	8.3	85.8	-1.8	90.2	5.1	97.9	8.5
ALCOHOLIC BEVERAGES & TOBACCO	16.16	77.8	4.9	81.8	5.1	85.3	4.3	87.5	2.5	91.4	4.5	96.5	5.6
HOUSING & UTILITIES	133.71	68.7	1.2	69.6	1.2	78.5	12.9	93.1	18.6	98.0	5.2	99.2	1.2
FURNITURE & HOUSEHOLD EQUIPMENT	57.79	78.4	1.2	80.6	2.8	85.1	5.7	90.5	6.3	96.8	7.0	98.0	1.2
TRANSPORTATION	162.02	87.5	1.7	87.9	0.5	88.1	0.3	92.0	3.8	96.5	4.9	97.6	1.1
CLOTHING & FOOTWEAR	68.35	65.5	4.8	67.4	2.9	71.8	6.6	73.7	2.7	84.2	14.2	91.9	9.1
MISCELLANEOUS EXPENSES	160.16	82.4	2.7	83.8	1.7	90.4	7.8	90.7	0.4	93.7	3.3	98.0	4.6
ALL ITEMS	1000.00	77.2	4.8	78.9	2.2	84.9	7.6	87.6	3.2	92.5	5.6	97.6	5.5

TABLE 5 cont'd. PERCENTAGE CHANGE IN GROUP INDICES

GROUP	WEIGHTS	February 1994 = 100.0											
		1993	%CHANGE '92-'93	1994	%CHANGE '93-'94	1995	%CHANGE '94-'95	1996	%CHANGE '95-'96	1997	%CHANGE '96-'97	1998	%CHANGE '97-'98
FOOD	401.81	99.9	2.1	96.1	-3.8	97.7	1.7	99.6	1.9	103.2	3.6	103.1	-0.05
ALCOHOLIC BEVERAGES & TOBACCO	16.16	98.5	2.0	100.6	2.2	101.0	0.3	110.4	9.3	112.7	2.1	114.5	1.6
HOUSING & UTILITIES	133.71	99.9	0.7	100.1	0.2	99.9	-0.2	100.0	0.1	101.6	1.4	102.5	0.9
FURNITURE & HOUSEHOLD EQUIPMENT	57.79	97.1	-0.8	98.8	1.7	96.6	-2.2	95.7	-1.0	96.6	1.4	97.3	0.7
TRANSPORTATION	162.02	99.9	2.4	101.5	1.6	102.6	1.1	105.9	3.2	106.5	0.1	105.0	-1.4
CLOTHING & FOOTWEAR	68.35	94.8	3.2	101.5	7.1	102.8	1.2	103.8	0.9	104.1	0.7	104.2	0.04
MISCELLANEOUS EXPENSES	160.16	98.3	0.3	102.3	4.1	105.5	3.1	107.2	1.6	111.0	8.9	117.8	6.1
ALL ITEMS	1000.00	99.1	1.6	99.1	0.0	100.4	1.3	102.1	1.7	104.6	2.4	105.6	1.0

TABLE 6. CONSUMER PRICE INDICES BY GROUPS AND SUB-GROUPS
Feb. 1987 - Feb. 1998

February 1994= 100.0

GROUPS Sub-groups	WEIGHTS	Feb 1987	Feb 1988	Feb 1989	Feb 1990	Feb 1991	Feb 1992	Feb 1993	Feb 1994	Feb 1995	Feb. 1996	Feb. 1997	Feb. 1998
ALL ITEMS	1000.00	76.0	77.4	81.9	86.9	90.8	95.6	98.9	100.0	100.2	101.2	103.6	105.1
FOOD	401.81	75.7	77.7	84.7	86.2	88.5	94.3	100.5	100.0	98.0	98.0	101.6	102.4
Meat(fresh, chill. or frozen)	36.37	81.2	77.9	85.9	89.4	100.1	98.1	97.2	100.0	108.2	97.7	112.2	110.4
Meat(preserved)	11.80	100.0	98.4	99.6	103.0	102.4
Fish and Fish Preparations	39.98	55.1	66.1	58.6	66.2	77.9	86.2	92.9	100.0	100.6	104.8	103.1	102.9
Dairy Products	36.57	86.9	91.8	98.3	100.3	98.6	99.8	100.5	100.0	100.0	114.4	118.1	117.4
Oils and Fats	8.97	97.5	91.8	96.8	96.1	99.3	98.8	100.0	100.0	100.7	101.7	102.4	102.4
Cereals	70.49	69.4	70.2	77.8	75.8	82.6	88.4	100.2	100.0	101.5	106.5	109.6	109.7
Vegetables and Fruits	64.60	73.9	75.1	91.1	88.5	80.8	93.9	106.7	100.0	114.2	92.7	94.7	99.7
Fruit and Fruit Preparations	58.39	100.0	98.3	113.0	106.0	105.6
Sugar and Other Sweets	15.24	78.6	80.7	94.5	98.3	97.9	95.6	98.3	100.0	100.1	90.5	102.1	104.4
Miscellaneous Items	29.67	87.6	86.0	85.7	102.9	107.2	115.9	106.4	100.0	101.8	101.6	105.9	104.9
Meals Taken Away From Home	20.78	73.5	76.5	78.2	82.3	89.3	92.7	100.0	100.0	98.4	103.1	103.1	103.1
Non-alcoholic Beverages	8.95	89.7	91.3	86.9	89.8	91.4	94.5	93.6	100.0	96.3	99.0	102.1	113.4
ALCOHOLIC BEV. & TOBACCO	16.16	76.7	79.6	84.2	86.6	89.0	95.4	98.5	100.0	100.0	107.6	111.7	114.7
Alcoholic Beverages	12.11	77.7	81.0	86.5	88.5	91.3	98.0	100.5	100.0	99.2	108.6	111.8	115.6
Tobacco Products	4.05	72.9	74.4	75.4	79.5	80.3	85.6	91.0	100.0	102.3	104.8	111.5	112.1
HOUSING & UTILITIES	133.71	68.9	69.1	72.3	90.5	97.1	98.2	99.7	100.0	100.3	99.6	100.5	102.4
Rent (excluding electricity)	35.28	61.5	61.5	61.5	91.1	94.7	100.0	100.0	100.0	100.0	101.0	102.5	103.6
Fuel Supplies	15.16	79.8	88.5	90.6	88.7	112.8	100.7	101.1	100.0	103.3	100.0	100.0	105.7
Utility Services	55.31	78.6	74.5	87.1	84.3	88.4	91.2	97.7	100.0	100.3	100.6	101.8	103.6
Repairs to House	17.61	100.0	99.4	93.6	94.0	95.6
Insurance Payments	2.89	100.0	100.0	100.0	100.0	100.0
Home Help Service	5.89	100.0	100.0	100.0	100.0	100.0
Laundry and Dry Cleaning Serv.	1.57	100.0	94.5	90.8	90.8	90.8
FURNITURE & HOUSEHOLD EQUI	57.79	79.2	80.3	82.0	86.3	94.1	98.5	96.6	100.0	97.4	95.4	96.0	97.4
Furniture & Furnishings	10.97	71.5	70.3	71.9	73.0	86.2	95.9	92.1	100.0	100.6	101.6	100.9	101.3
Kitchen Equipment	11.13	85.1	88.1	89.8	96.7	100.3	100.5	100.0	100.0	99.6	91.2	91.4	91.3
Recreational Equipment	11.69	100.0	91.9	83.6	83.1	83.7
Laundry and Cleaning Equip.	3.58	100.0	102.7	92.6	91.9	93.6
House Cleaning	19.27	100.0	96.2	99.7	102.1	104.5
Repairs to Equipment	1.15	100.0	100.0	100.0	100.0	100.0
TRANSPORTATION	162.02	86.9	87.9	88.9	88.0	96.5	96.5	100.0	100.0	102.2	105.7	108.1	104.6
Purchased Transportation	50.34	100.0	103.4	105.3	112.5	99.7
Purchase of Motor Vehicles	50.89	100.0	100.3	111.1	111.4	111.4
Operational Expenses	46.29	100.0	98.8	99.2	99.5	101.3
Insurance and Fees	14.50	100.0	115.1	108.6	108.6	108.6
CLOTHING & FOOTWEAR	68.35	64.8	66.6	67.8	73.0	77.0	93.9	90.8	100.0	102.1	103.8	103.6	104.5
Clothing	49.69	63.4	63.0	64.3	68.8	73.9	93.5	91.7	100.0	103.7	102.7	103.4	103.9
Footwear	15.77	69.3	77.7	78.5	85.8	86.4	95.0	87.9	100.0	97.8	106.7	103.8	106.2
Clothing Accessories	2.89	100.0	98.9	106.4	106.4	106.4
MISCELLANEOUS EXPENSES	160.16	82.2	83.0	87.2	92.0	93.0	95.3	97.7	100.0	104.1	106.6	108.3	116.7
Personal Care & Supplies	38.21	83.1	83.1	91.6	101.5	100.7	100.6	100.5	100.0	100.2	102.0	108.6	107.3
Medicines and Health Exp.	15.75	100.0	104.2	106.8	109.5	118.0
Personal Life Insurance	4.80	100.0	100.0	100.0	100.0	100.0
Educational Expenses	49.59	100.0	111.0	113.5	113.4	139.4
Sporting & Other Recreation	30.06	100.0	101.6	101.6	101.6	101.6
Other Miscellaneous	21.75	70.3	73.7	77.2	78.4	87.1	91.1	95.7	100.0	99.3	107.1	106.6	105.1

TABLE 6A. CONSUMER PRICE INDICES BY GROUPS AND SUB-GROUPS
 PERCENTAGE CHANGE FROM BASE PERIOD
 TO FEBRUARY 1998 AND DECEMBER 1998

FEB 1994 = 100.0

GROUPS Sub-groups	WEIGHTS	Feb	Feb.	Feb	Feb	Dec.	% CHANGE	% CHANGE
		1995	1996	1997	1998	1998	FEB. '94 TO FEB. '98	FEB. '94 TO DEC. '98
ALL ITEMS	1000.00	100.2	101.2	103.6	105.1	107.3	5.1	7.3
FOOD	401.81	98.0	98.0	101.6	102.4	105.6	2.4	5.6
Meat(fresh,chill. or frozen)	36.37	108.2	97.7	112.2	110.4	116.4	10.4	16.4
Meat(preserved)	11.80	98.4	99.6	103.0	102.4	103.5	2.4	3.5
Fish and Fish Preparations	39.98	100.6	104.8	103.1	102.9	103.7	2.9	3.7
Dairy Products	36.57	100.0	114.4	118.1	117.4	117.2	17.3	17.2
Oils and Fats	8.97	100.7	101.7	102.4	102.4	101.7	2.4	1.7
Cereals	70.49	101.5	106.5	109.6	109.7	111.9	9.7	11.9
Vegetables and Fruits	64.60	114.2	92.7	94.7	99.7	105.0	-0.3	5.0
Fruit and Fruit Preparations	58.39	98.3	113.0	106.0	105.6	112.6	5.6	12.6
Sugar and Other Sweets	15.24	100.1	90.5	102.1	104.4	103.7	4.4	3.7
Miscellaneous Items	29.67	101.8	101.6	105.9	104.9	109.0	4.9	9.0
Meals Taken Away From Home	20.78	98.4	103.1	103.1	103.1	107.0	3.1	7.0
Non-alcoholic Beverages	8.95	96.3	99.0	102.1	113.4	114.1	13.4	14.1
ALCOHOLIC BEV. & TOBACCO	16.16	100.0	107.6	111.7	114.7	114.1	14.7	14.1
Alcoholic Beverages	12.11	99.2	108.6	111.8	115.6	115.0	15.6	15.0
Tobacco Products	4.05	102.3	104.8	111.5	112.1	111.2	12.1	11.2
HOUSING & UTILITIES	133.71	100.3	99.6	100.5	102.4	102.7	2.4	2.7
Rent (excluding electricity)	35.28	100.0	101.0	102.5	103.6	105.5	3.6	5.5
Fuel Supplies	15.16	103.3	100.0	100.0	105.7	105.7	5.7	5.7
Utility Services	55.31	100.3	100.6	101.8	103.6	103.2	3.6	3.2
Repairs to House	17.61	99.4	93.6	94.0	95.6	95.6	-4.5	-4.4
Insurance Payments	2.89	100.0	100.0	100.0	100.0	100.0	0.0	0.0
Home Help Service	5.89	100.0	100.0	100.0	100.0	100.0	0.0	0.0
Laundry and Dry Cleaning Serv.	1.57	94.5	90.8	90.8	90.8	92.7	-9.2	-7.3
FURNITURE & HOUSEHOLD EQUIP	57.79	97.4	95.4	96.0	97.4	99.4	-2.6	-0.6
Furniture & Furnishings	10.97	100.6	101.6	100.9	101.3	107.9	1.3	7.9
Kitchen Equipment	11.13	99.6	91.2	91.4	91.3	91.8	-8.7	-8.3
Recreational Equipment	11.69	91.9	83.6	83.1	83.7	83.7	-16.3	-16.3
Laundry and Cleaning Equip.	3.58	102.7	92.6	91.9	93.6	96.5	-6.4	-3.5
House Cleaning	19.27	96.2	99.7	102.1	104.5	105.7	4.5	5.7
Repairs to Equipment	1.15	100.0	100.0	100.0	100.0	100.0	0.0	0.0
TRANSPORTATION	162.02	102.2	105.7	108.1	104.6	105.2	4.6	5.2
Purchased Transportation	50.34	103.4	105.3	112.5	99.7	102.2	-0.3	2.2
Purchase of Motor Vehicles	50.89	100.3	111.1	111.4	111.4	111.4	11.4	11.4
Operational Expenses	46.29	98.8	99.2	99.5	101.3	100.8	1.3	0.8
Insurance and Fees	14.50	115.1	108.6	108.6	108.6	108.6	8.6	8.6
CLOTHING & FOOTWEAR	68.35	102.1	103.8	103.6	104.5	104.5	4.5	4.5
Clothing	49.69	103.7	102.7	103.4	103.9	103.4	3.9	3.4
Footwear	15.77	97.8	106.7	103.8	106.2	107.5	6.2	7.5
Clothing Accessories	2.89	98.9	106.4	106.4	106.4	107.1	6.4	7.1
MISCELLANEOUS EXPENSES	160.16	104.1	106.6	108.3	116.7	120.8	16.7	20.8
Personal Care & Supplies	38.21	100.2	102.0	108.6	107.3	110.6	7.3	10.5
Medicines and Health Exp.	15.75	104.2	106.8	109.5	118.0	124.0	18.0	24.0
Personal Life Insurance	4.80	100.0	100.0	100.0	100.0	102.5	0.0	2.5
Educational Expenses	49.59	111.0	113.5	113.4	139.4	141.9	39.4	41.9
Sporting & Other Recreation	30.06	101.6	101.6	101.6	101.6	101.6	1.6	1.6
Other Miscellaneous	21.75	99.3	107.1	106.6	105.1	118.7	5.1	18.7

TABLE 7. PRICE MOVEMENTS OF SELECTED ITEMS IN
CONSUMER PRICE INDEX FEBRUARY 1991-FEBRUARY 1998

ITEM	UNIT	1984	FEB	FEB	FEB	FEB	FEB	FEB	FEB	FEB	% CHANGE 1984 BASE PRICE TO FEB. 94 BASE PRICE
		BASE PRICE	1991	1992	1993	1994	1995	1996	1997	1998	
FOOD											
Beef (local)	kg	8.25	13.20	13.20	15.03	15.40	15.40	13.20	13.93	13.92	86.67
imported	kg	16.17	14.86	14.90	11.92	12.19	12.19	11.48	12.13	13.05	-24.61
Chicken (backs & necks)	kg	2.83	3.76	3.67	3.82	3.66	3.78	3.41	4.31	4.19	29.33
wings	kg	5.64	6.74	6.76	6.12	6.45	6.53	6.18	7.67	7.52	14.36
whole legs	kg	6.36	6.43	5.98	5.65	6.26	6.42	5.82	7.15	6.66	-1.57
Fish (pot)	kg	8.25	11.00	11.00	14.67	14.30	14.30	15.40	15.40	15.40	73.33
tuna	kg	8.25	13.20	13.20	13.20	15.40	15.40	15.40	15.40	15.40	86.67
Salted fish	kg	7.61	16.53	17.98	16.93	16.22	16.51	18.18	16.68	16.81	113.14
Evaporated milk	410gms	1.20	1.46	1.48	1.52	1.52	1.52	1.89	2.01	1.96	26.67
Powdered milk	1800gms	14.46	20.95	20.24	19.94	22.41	22.26	25.14	25.12	25.79	54.98
Butter	250gms	5.33	5.01	5.01	5.01	3.28	3.17	4.09	4.13	3.99	-38.46
Cheese	kg	9.70	14.15	15.56	17.90	14.80	14.97	16.66	16.52	16.51	52.58
Eggs	dozen	5.73	6.08	6.23	5.50	6.37	6.04	5.94	6.44	6.29	11.17
Cooking Oil	1 litre	4.84	5.17	5.17	5.09	8.11	8.11	8.11	8.11	8.11	67.56
Sandwich loaf	sliced	2.50	2.75	2.75	2.88	2.88	2.75	2.92	2.98	3.00	15.20
Flour	kg	1.75	1.92	1.92	1.90	1.85	1.98	2.09	2.09	2.04	5.71
Rice	kg	1.98	1.95	2.04	2.04	2.07	2.05	1.88	2.03	2.04	4.55
Tomatoes	kg	6.60	4.40	8.43	6.60	4.40	11.00	7.43	9.23	8.80	-33.33
Carrots	kg	3.30	7.90	5.70	11.00	6.36	6.60	7.60	6.22	8.50	92.73
Cabbage	kg	5.50	4.40	3.67	4.40	4.40	6.60	3.58	6.33	7.33	-20.00
Onions	kg	3.56	3.91	4.02	3.90	3.96	3.67	3.69	3.72	4.38	11.24
Beans	kg	4.35	6.14	6.10	6.82	7.16	7.09	6.74	7.43	7.57	64.60
Lentils	kg	3.52	4.75	5.66	5.12	4.57	3.70	3.59	4.09	3.29	29.83
Oranges	each	0.54	0.33	0.30	0.33	0.33	0.50	1.00	0.57	0.65	-38.89
Grapefruit	each	0.25	0.18	0.13	0.14	0.20	0.20	0.20	0.17	0.17	-20.00
Melons	kg	1.28	2.71	2.57	1.31	3.30	1.98	2.20	2.08	2.46	157.81
White sugar	kg	1.45	2.06	2.06	2.06	2.12	2.13	1.85	2.09	2.09	46.21
Brown sugar	kg	1.58	1.85	1.80	1.87	1.90	1.9	1.66	1.91	1.91	20.25
Salt	kg	0.92	1.20	1.27	1.20	1.26	1.35	1.41	1.27	1.11	36.96
Tomato Ketchup	375ml	3.89	5.44	5.16	4.21	3.93	4.87	4.83	5.11	4.82	1.03
Coffee (beans)	kg	12.05	13.60	13.95	13.96	13.42	13.42	13.42	13.74	14.37	11.37
instant	50gms	9.69	6.47	7.03	6.06	6.06	7.67	8.47	8.48	6.32	-37.46
Coca-cola	296ml	0.80	1.00	1.00	1.00	1.20	1.20	1.20	1.25	1.50	50.00
Ham sandwich	each	2.25	3.40	3.50	3.88	3.88	4.00	4.25	4.25	4.25	72.44
Roti	each	4.50	5.75	6.00	6.00	6.00	6.50	6.75	6.75	6.75	33.33

TABLE 7contd. PRICE MOVEMENTS OF SELECTED ITEMS IN
CONSUMER PRICE INDEX FEBRUARY 1991-FEBRUARY 1997

ITEM	UNIT	1984 BASE PRICE	FEB. 1991	FEB. 1992	FEB. 1993	FEB. 1994	FEB. 1995	FEB. 1996	FEB. 1997	FEB. 1998	% CHANGE 1984 BASE PRICE TO FEB.94
ALCOHOLIC BEV. & TOBACCO											
Rum	75cl	8.40	10.18	9.91	9.57	9.67	10.18	10.34	12.31	13.64	15.12
Whisky	75cl	18.25	29.96	38.25	41.14	40.38	39.79	41.17	41.17	41.57	121.26
Beer	284ml	2.33	2.98	2.81	2.86	2.86	2.72	3.12	3.27	3.22	22.75
Cigarettes(hillsb.)	pkt./20	1.65	2.19	2.50	2.51	2.75	2.75	2.75	3.03	3.03	66.67
(b&h)	pkt./20	2.93	3.57	3.62	4.01	4.42	4.60	4.80	4.98	4.98	50.85
FUEL											
Kerosene	gal	4.00	4.80	3.82	3.94	3.62	3.62	3.62	3.62	4.35	-9.50
Gas	9.1kg	24.51	28.85	27.70	27.70	27.70	27.70	27.70	27.70	29.30	13.02
UTILITIES											
Electricity	month	34.21	38.14	31.58	41.28	43.14	93.49	94.29	95.03	99.17	26.10
Telephone	month	40.44	40.44	40.44	40.44	40.44	58.64	58.64	58.64	58.64	0.00
Water	month	9.17	16.50	25.00	25.00	26.89	26.89	26.89	26.89	45.80	193.24
HOUSEHOLD EQUIPMENT											
Refrigerator	15cu.ft	3078.25	3303.12	3303.12	3258.44	3258.44	2509.88	2356.98	2355.38	2355.38	5.85
Radio-recorder		485.00	909.20	909.18	909.20	909.18	803.93	745.93	795.00	795.00	87.46
Black & white t.v.	17"	580.00	606.67	606.67	606.67	606.67	326.43	311.24	311.24	357.59	4.60
Colour t.v.	19"	1770.25	1648.26	1648.26	1618.26	1618.26	1821.93	1487.00	1433.79	1417.93	-8.59
CLOTHING											
Women's dress	casual	49.98	75.07	123.50	114.75	118.53	85.00	97.75	97.75	97.75	137.15
	formal	68.74	155.56	197.98	196.41	193.44	245.00	265.00	265.00	280.00	181.41
Girl's dress		39.98	58.36	82.52	89.81	96.78	80.93	65.98	93.04	89.92	142.07
Boy's shirt	casual	36.45	35.00	38.66	46.85	42.53	42.66	45.89	35.54	35.54	16.68
trousers	formal	32.48	36.00	39.98	39.98	42.55	40.75	40.88	40.88	40.88	31.00
FOOTWEAR											
Women's shoes	casual	39.98	52.82	49.75	50.13	59.72	57.56	80.19	73.31	76.83	49.37
	formal	77.50	75.86	75.25	66.95	72.43	72.68	82.23	77.07	83.78	-6.54
Men's shoes	casual	57.50	65.56	108.79	87.04	114.86	79.57	79.57	79.57	79.57	99.76
	formal	75.00	100.00	142.97	131.70	146.51	127.68	130.85	130.39	130.39	95.35
MISCELLANEOUS											
Toilet soap	145gm	1.54	1.31	1.31	1.31	1.26	1.47	1.63	1.94	1.96	-18.18
Tooth paste	76gm	3.93	6.75	6.74	6.75	6.97	4.85	5.05	6.62	6.13	77.35
Deodorant	110gm	9.40	13.21	13.03	13.21	13.14	12.92	13.88	13.76	13.76	39.79
Doctor's fees	per visit	20.00	30.00	40.00	40.00	45.00	55.00	55.00	60.00	60.00	125.00
Television fees	month	30.00	40.00	40.00	50.00	50.00	50.00	50.00	50.00	50.00	66.67
School fees(pre-school)	month	20.00	25.00	25.00	25.00	31.67	40.00	40.00	40.00	83.33	58.35
Petrol	gal.	6.00	6.50	6.50	6.50	6.50	6.50	6.50	6.50	6.70	8.33
Vehicle license	year	229.60	330.00	330.00	330.00	330.00	440.00	440.00	440.00	440.00	43.73

TABLE 8. PRICE MOVEMENTS OF SELECTED ITEMS IN CONSUMER PRICE INDEX
FEBRUARY 1994 BASE PRICE COMPARED WITH DECEMBER 1997 AND 1998 PRICES

FEB. 1994 = 100.0

ITEMS DESCRIPTION AND SPECIFICATION	UNIT	BASE PRICE FEB. 1994	DEC. 1997	DEC. 1998	% CHANGE DEC. 97 TO DEC.98	% CHANGE FEB. 1994 TO DEC. 98
ALL ITEMS						
1 FOOD						
MEAT						
1.01 MEAT (fresh, chilled or frozen)						
Beef						
(a) local	Kg	15.40	15.03	15.40	2.46	0.00
(b) imported	Kg	12.80	11.97	11.63	-2.84	-9.14
Chicken						
(a) backs and necks	Kg	3.68	4.14	4.50	8.70	22.28
(b) wings	Kg	6.45	7.42	8.94	20.49	38.60
(c) wholelegs	Kg	6.26	6.70	6.88	2.69	9.90
(d) thighs	Kg	5.64	6.58	6.14	-6.69	8.87
Pork						
(a) local	Kg	12.10	13.20	13.57	2.80	12.15
(b) imported	Kg	11.23	28.01	25.38	-9.39	126.00
Mutton	Kg	14.97	24.75	25.36	2.46	69.41
Turkey drumsticks	Kg	5.96	6.02	5.96	-1.00	0.00
1.02 MEAT(Preserved)						
Salted Beef	kg	7.93	11.95	11.95	0.00	50.69
Corned Beef	340.5g	5.23	5.05	5.06	0.20	-3.25
Salted Pork	Kg	7.93	9.63	10.40	8.00	31.15
Sausages	666.8g	13.82	15.44	15.44	0.00	11.72
Sausages(canned)	140g	1.97	1.92	1.90	-1.04	-3.55
Bacon	kg	18.35	9.37	9.37	0.00	-48.94
Ham	450g	14.98	14.05	13.78	-1.92	-8.01
1.03 FISH AND FISH PREPARATIONS						
Fish (fresh)						
(a) pot	Kg	14.30	15.40	15.40	0.00	7.69
(b) tuna	Kg	15.40	15.40	15.40	0.00	0.00
(c) red snapper	Kg	15.40	15.40	15.40	0.00	0.00
Salted Fish	Kg	16.53	16.95	17.77	4.84	7.50
Smoked Fish	Kg	7.17	8.87	8.36	-5.75	16.60
Canned Fish						
(a) sardines	106g	2.04	2.21	2.06	-6.79	0.98
(b) tuna	174.8g	3.32	3.59	3.48	-3.06	4.82
1.04 DAIRY PRODUCTS						
MILK						
Fresh Milk	75 cl.	3.00	3.00	3.00	0.00	0.00
Evaporated Milk	410g	1.52	1.95	1.91	-2.05	25.66
Powdered Milk	1800g	22.41	25.79	25.79	0.00	15.08
Butter	250g	3.28	3.99	4.17	4.51	27.13
Cheese	Kg	14.63	16.51	16.66	0.91	13.88
Eggs	Doz	5.99	6.41	6.29	-1.87	5.01

TABLE 8. continued

ITEMS	UNIT	BASE PRICE FEB. 1994	DEC. 1997	DEC. 1998	% CHANGE DEC. 97 TO DEC. 98	% CHANGE FEB. 94 TO DEC. 98
1.05 OILS & FATS						
Cooking Oil	1 litre	8.11	8.11	8.11	0.00	0.00
Margarine	kg	4.19	4.61	4.45	-3.58	6.09
1.06 CEREALS						
Bread						
(a) sandwich loaf(sliced)	pkg	2.75	3.00	3.17	5.67	15.27
Other Cereal Products						
Flour (loose white)	Kg	1.90	2.04	1.98	-2.94	4.21
Rice						
(a) loose white	Kg	2.18	2.00	1.97	-1.50	-9.63
(b) brand packaged	908g	2.91	3.80	3.97	4.47	36.43
Macaroni	206g	2.31	2.53	2.52	-0.40	9.09
Corn Meal	Kg	3.57	3.85	4.07	5.71	14.01
Cassava Farine	Kg	11.17	12.05	12.40	2.90	11.01
Cornflakes	198g	7.46	8.47	8.91	5.19	19.44
Oats	550g	5.17	5.43	5.60	3.13	8.32
Breakfast Food(Drinks)						
Instant Chocolate	198g	6.11	6.36	6.36	0.00	4.09
Coffee						
(a) instant	50g	6.06	6.32	8.13	28.64	34.16
(b) local beans	kg	13.42	15.73	13.75	-12.59	2.46
Tea	pkg/25 bags	4.73	4.90	4.60	-6.12	-2.75
Ovaltine	400g	11.91	12.32	12.35	0.24	3.69
Milo	450g	11.91	10.05	10.05	0.00	-15.62
1.07 VEGETABLES AND FRUITS						
VEGETABLES(Fresh)						
Tomatoes	Kg	4.40	11.55	12.10	4.76	175.00
Carrots	Kg	6.36	10.74	9.82	-8.57	54.40
Cabbages	Kg	4.40	6.60	6.41	-2.88	45.68
Onions (imported)	Kg	3.79	3.63	3.99	9.92	5.28
Garlic (imported)	Kg	20.14	16.15	13.73	-14.98	-31.83
Cucumbers	Kg	4.72	2.98	2.97	-0.34	-37.08
Pumpkins	kg	2.93	2.73	3.56	30.40	21.50
Lettuce	medium head	1.50	2.50	3.81	52.40	154.00
Sweet Peppers	Kg	11.00	8.85	9.90	11.86	-10.00
Celery	bundle	1.00	1.00	1.50	50.00	50.00
Parsley	bundle	1.00	1.00	1.50	50.00	50.00
Thyme	bundle	1.00	1.00	1.00	0.00	0.00
Scallions(chives)	bundle	1.00	1.00	1.50	50.00	50.00
STARCHY FOODS						
Yams	Kg	4.40	4.40	5.50	25.00	25.00
Dasheens	Kg	1.62	3.22	1.83	-43.17	12.96
Bananas(green)	Kg	0.39	0.23	0.22	-4.35	-43.59
Potatoes(not sweet)	Kg	3.35	2.61	4.80	83.91	43.28
Potatoes(sweet)	Kg	3.06	2.99	3.10	3.68	1.31
Tannias	Kg	5.87	3.89	3.64	-6.43	-37.99
Plantains (green)	Kg	1.98	1.11	0.87	-21.62	-56.06
Plantains (ripe)	kg	2.93	2.67	1.20	-55.06	-59.04
Breadfruits	Kg	1.69	0.73	0.73	0.00	-56.80
DRIED VEGETABLES						
Peas	Kg	7.61	6.82	8.73	28.01	14.72
Beans	Kg	7.36	7.43	7.96	7.13	8.15
Lentils	Kg	5.18	3.29	3.08	-6.38	-40.54
CANNED VEGETABLES						
	241.2g	2.99	2.82	3.48	23.40	16.39

TABLE 8 continued.

ITEM	UNIT	BASE PRICE FEB. 1994	DEC. 1997	DEC. 1998	% CHANGE DEC. 97 TO DEC. 98	% CHANGE FEB. 1994 TO DEC. 98
1.08 FRUIT AND FRUIT PREPARATIONS						
Fresh Fruits						
Oranges	Each	0.33	0.55	0.75	36.36	127.27
Grapefruits	Each	0.20	0.20	0.25	25.00	25.00
Limes	kg	3.66	4.85	4.86	0.21	32.79
Coconuts						
(dry)	each	0.29	0.33	0.33	0.00	13.79
(jelly)	Each	1.00	1.00	1.00	0.00	0.00
Ripe Bananas	kg	1.10	0.73	0.69	-5.48	-37.27
Melons	Kg	3.30	2.93	2.75	-6.14	-16.67
Pawpaw	Kg	2.93	1.30	1.32	1.54	-54.95
Soursop	Kg	2.34	2.07	1.45	-29.95	-38.03
Peanuts (unshelled)	Kg	13.90	15.29	17.38	13.67	25.04
Dried Fruit(prunes)	kg	12.85	11.00	11.51	4.64	-10.43
1.09 SUGAR AND OTHER SWEETS						
SUGAR OR EQUIVALENT						
White Sugar	kg	2.12	2.09	2.09	0.00	-1.42
Brown Sugar	kg	1.90	1.91	1.91	0.00	0.53
1.10 MISCELLANEOUS						
CONDIMENTS AND SAUCES						
CONDIMENTS						
Salt	kg	1.25	1.12	1.10	-1.79	-12.00
Nutmegs	kg	22.00	35.00	35.00	0.00	59.09
Ginger	kg	3.67	4.62	6.60	42.86	79.84
SAUCES AND RELISHES						
Tomato Ketchup	750ml	4.59	4.82	4.83	0.21	5.23
Pepper Sauce	85ml	1.96	1.99	1.99	0.00	1.53
Mustard	175ml	3.68	4.11	4.54	10.46	23.37
BABY FOODS						
(a) Cereal		6.38	8.71	8.96	2.87	40.44
(b) Strained/puree food		2.45	2.65	2.25	-15.09	-8.16
MEALS TAKEN AWAY FROM HOME						
Ham Sandwich	each	4.17	4.25	4.42	4.00	6.00
Roti	each	6.50	6.75	7.00	3.70	7.69
DRINKS TAKEN AWAY FROM HOME						
Passion fruit juice	medium glass	3.17	3.25	3.42	5.23	7.89
Grapefruit juice	medium glass	3.25	3.38	3.63	7.40	11.69
1.11 NON-ALCOHOLIC BEVERAGES						
Coca-cola						
Coke	85ml	1.25	1.50	1.50	0.00	20.00
Juc	85ml	1.25	1.25	1.25	0.00	0.00
Instant drink	350g	7.20	7.62	7.47	-1.97	3.75



TABLE 8 continued

ITEMS	UNIT	BASE PRICE FEB. 1994	DEC. 1997	DEC. 1998	% CHANGE DEC. 97 TO DEC. 98	% CHANGE FEB. 1994 TO DEC. 98
2.0 ALCOHOLIC BEVERAGES AND TOBACCO						
2.01 ALCOHOLIC BEVERAGES						
Rum	750ml	9.64	13.13	13.91	5.94	44.29
Whisky	75cl	40.38	41.17	41.17	0.00	1.96
Brandy	70cl	15.40	16.65	16.60	-0.30	7.79
Gin	75cl	28.07	36.27	35.41	-2.37	26.15
Wine	750ml	8.14	8.30	7.95	-4.22	-2.33
Beers	8.75 fl.oz.	2.86	3.20	3.18	-0.63	11.19
Stout	275ml	3.09	3.42	3.42	0.00	10.68
2.02 TOBACCO PRODUCTS						
Cigarettes	pkg/20	2.76	3.03	3.03	0.00	9.78
	pkg/20	4.38	4.98	4.90	-1.61	11.87
Tobacco	kg	33.00	39.60	39.20	-1.01	18.79
3.0 HOUSING AND UTILITIES						
3.01 RENT(excl. electricity)						
(a)	month	33.13	36.20	36.64	1.22	10.59
(b)	month	136.25	136.25	139.38	2.30	2.30
(c)	month	225.00	225.00	237.50	5.56	5.56
(d)	month	322.00	322.00	350.00	8.70	8.70
(e)	month	420.00	450.00	460.00	2.22	9.52
(f)	month	542.00	542.00	542.00	0.00	0.00
(g)	month	850.00	850.00	850.00	0.00	0.00
3.02 FUEL SUPPLIES						
Kerosene	gal.	3.62	3.62	4.35	20.17	20.17
Charcoal	ker(box)	12.00	12.00	12.00	0.00	0.00
Gas(cooking)	20 lb. cylinder	27.70	27.70	29.30	5.78	5.78
3.03 UTILITY SERVICES						
Electricity	month	92.88	97.28	98.17	0.91	5.70
Telephone (rental of one standard telephone + 138 excess calls)	month	58.64	58.64	58.64	0.00	0.00
Water Rates (avg. of metered & non.metered)	month	24.39	26.89	45.80	70.32	87.78
Sewerage Rates (owner occupied)	month	5.00	10.60	10.60	0.00	112.00
3.03 REPAIRS TO HOUSE						
Lumber	foot	3.08	2.38	2.40	0.84	-22.08
Cement	94 lb	14.16	15.07	15.86	5.24	12.01
Steel	1/2" /length 20ft.	11.59	10.48	11.75	12.12	1.38
Paint	gallon	65.00	62.00	62.00	0.00	-4.62
Labour						
unskilled	day	37.50	37.50	37.50	0.00	0.00
skilled	day	67.00	67.50	67.50	0.00	0.75
3.04 HOME INSURANCE PAYMENTS						
	month	9.00	9.00	9.00	0.00	0.00
3.05 HOME HELP SERVICE						
	month	216.00	216.00	216.00	0.00	0.00
3.06 LAUNDRY AND DRY CLEANING SERVICES						
(a) one medium load	per load	5.50	5.50	5.50	0.00	0.00
(b) one suit(ladies)	per suit	25.00	20.00	21.00	5.00	-16.00
(c) one suit(men's)	per suit	24.00	24.00	24.00	0.00	0.00

TABLE 8 continued.

ITEMS	UNIT	BASE PRICE FEB. 1994	DEC 1997	DEC. 1998	% CHANGE DEC. 97 TO DEC.98	% CHANGE FEB. 1994 TO DEC. 1998
4.0 FURNITURE AND HOUSEHOLD EQUIPMENT						
4.01 FURNITURE & FURNISHINGS						
Living Room Furniture						
three piece set	set	1533.94	1628.34	1825.93	12.13	19.04
Carpet (vinyl)	yard	15.97	12.52	14.37	14.78	-10.02
Dining Room Furniture						
Table with 4 chairs	set	935.14	972.58	1016.58	4.52	8.71
Bedroom Furniture						
Beds (double-wooden)	each	1068.67	976.22	1008.08	3.26	-5.67
Mattresses (double,6")	each	303.97	332.03	358.83	8.07	18.05
Sheets (4 piece full)	set	88.30	84.46	86.43	2.33	-2.12
Wardrobes(standard,mirror,5 drawers)	each	1537.50	1344.50	1344.50	0.00	-12.55
4.02 BABIES' FURNITURE & EQUIPMENT						
Cribs (standard)	each	827.50	877.50	877.50	0.00	6.04
Blankets 30" * 30"	pkg/2	30.00	27.00	27.20	0.74	-9.33
4.03 KITCHEN EQUIPMENT						
Refrigerator 15 cu.ft	each	2511.43	2355.38	2355.38	0.00	-6.21
Stove 4 burner	each	834.85	740.67	740.67	0.00	-11.28
Blender 7 speed,1 1/4 litre cup	each	239.13	173.82	177.89	2.34	-25.61
Pots regular 26cm	each	35.33	35.09	38.06	8.46	7.73
4.06 RECREATIONAL EQUIPMENT						
Radios with recorder(high speed, cont. play)	set	1026.43	795.00	795.00	0.00	-22.55
Stereo Sets(double deck,6 band equaliser, cd,tun table,radio am/fm	set	2073.93	1870.43	1870.43	0.00	-9.81
Television Sets						
(a) black & white	set	483.88	357.59	357.59	0.00	-26.10
(b) colour 20 inch remote control	set	1744.75	1417.93	1417.93	0.00	-18.73
VCR'S(Video Players/Recorders)	set	1395.00	1295.00	1295.00	0.00	-7.17
4.07 LAUNDRY & CLEANING EQUIPMENT						
Washing Machines 7 cycles	each	1526.93	1377.84	1425.84	3.48	-6.62
Iron steam	each	152.12	167.10	181.43	8.58	19.27
4.08 HOUSE CLEANING LAUNDRY SUPPLIES						
Soap						
(a) bar	each	0.75	0.93	0.94	1.08	25.33
(b) powder	400g	3.40	3.79	4.06	7.12	19.41
Bleach	16 fl.oz.	3.00	2.75	2.85	3.64	-5.00
Fabric Softener	1 litre	6.60	7.18	7.18	0.00	8.79
SPRAYS AND DISINFECTANTS						
Insect Spray						
Baygon	400ml	13.95	10.38	10.35	-0.29	-25.81
Insect Repellants						
Fish Coil	pkg/6	1.62	1.80	1.72	-4.44	6.17
Toilet Disinfectant	340g	4.23	4.29	4.29	0.00	1.42
Air fresheners	300ml	6.70	6.92	6.45	-6.79	-3.73
4.10 REPAIRS TO EQUIPMENT/FURNITURE						
Refrigerator(minor)	each	182.50	182.50	182.50	0.00	0.00
Television(minor)	each	95.00	95.00	95.00	0.00	0.00

TABLE 8 continued

ITEMS	UNIT	BASE PRICE FEB. 1994	DEC. 1997	DEC. 1998	% CHANGE DEC.97 TO DEC. 98	% CHANGE FEB. 1994 TO DEC. 98
5.0 TRANSPORTATION						
5.01 PURCHASED TRANSPORTATION						
Bus Fares						
(a) 8 miles from city(1 way)	fare	3.00	3.00	3.00	0.00	0.00
Taxi Fares 3 miles from city(1 way)	fare	25.00	25.00	25.00	0.00	0.00
Air Fares						
(a)Dom/New York/Dom 21 dys	fare	1696.00	1800.00	1725.00	-4.17	1.71
(b)Dom/St.Maart/Dom 21 dys	fare	596.00	641.00	640.00	-0.16	7.38
Sea Travel						
(a)Dom./G.loupe/Dom.	fare	224.00	237.25	235.50	-0.74	5.13
5.02 PURCHASE OF MOTOR VEHICLES						
Motor Cars	each	54000.00	55000.00	55000.00	0.00	1.85
Vans	each	47000.00	55500.00	55500.00	0.00	18.09
Bicycles	each	360.50	458.35	458.35	0.00	27.14
5.03 OPERATIONAL EXPENSES						
Petrol regular	gall.	6.50	6.70	6.70	0.00	3.08
Oil & Grease						
(a) oil	can	11.00	11.00	11.00	0.00	0.00
(b) grease	can	10.00	10.30	10.30	0.00	3.00
Tyres	each	157.59	162.33	155.00	-4.52	-1.64
Batteries	each	231.75	231.75	231.75	0.00	0.00
Servicing(labour)						
(a) motor car 1300cc (minor serv.)	per service	95.00	95.00	95.00	0.00	0.00
(b) van	per service	115.00	115.00	115.00	0.00	0.00
Servicing(vehicle parts)						
(a) motor car 1300cc (minor serv.)	per service	250.00	215.00	215.00	0.00	-14.00
(b) van	per service	265.77	265.77	265.77	0.00	0.00
5.04 INSURANCE, TAXES,FEES						
Insurance	year	4384.00	4384.00	4384.00	0.00	0.00
Vehicle License	year	330.00	440.00	440.00	0.00	33.33
Drivers License	year	60.00	80.00	80.00	0.00	33.33

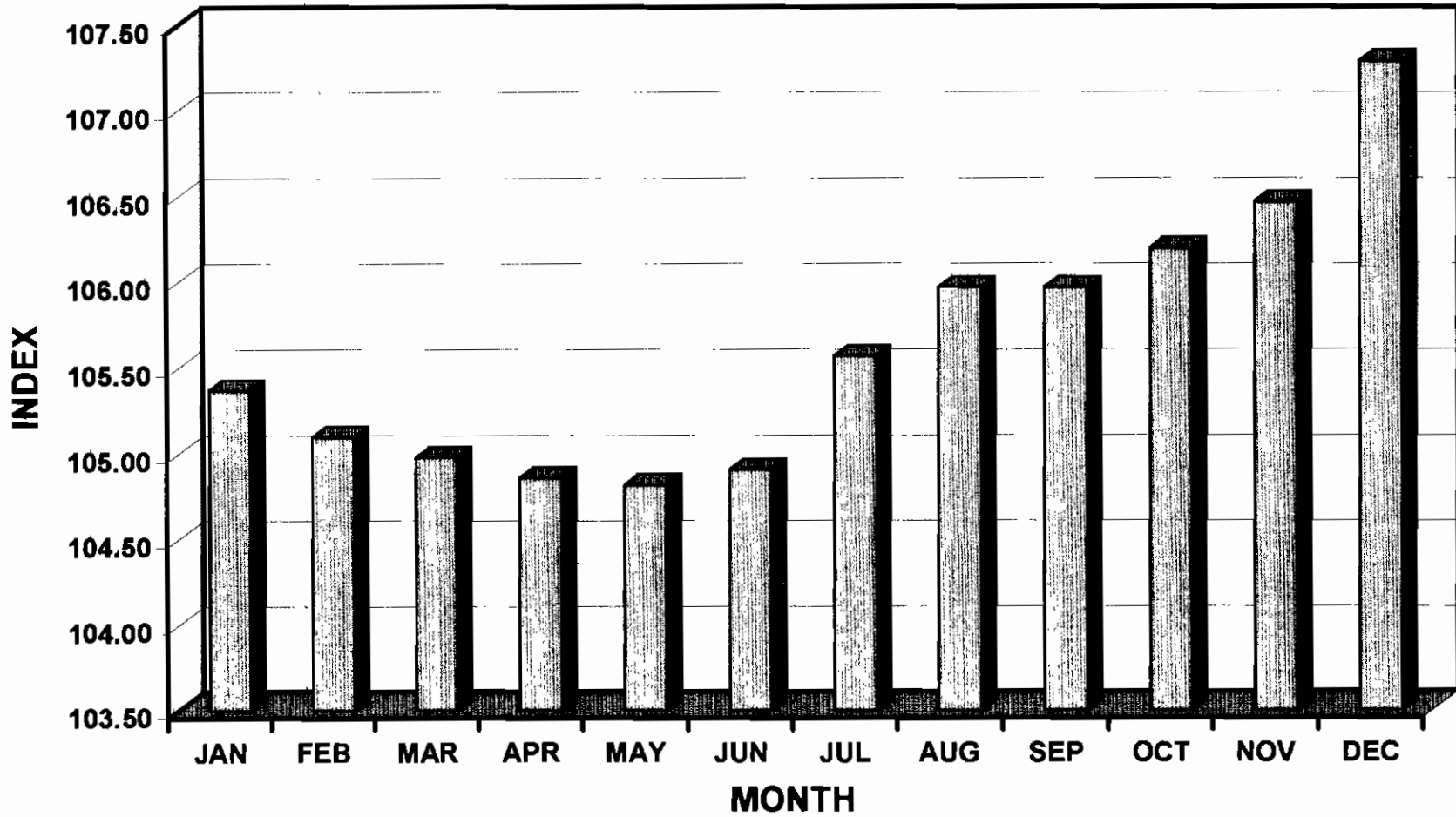
TABLE 8 continued

ITEMS	UNIT	BASE PRICE FEB. 1994	DEC. 1997	DEC. 1998	% CHANGE DEC. 97 TO DEC. 98	% CHANGE FEB. 1994 TO DEC. 98
6.0 CLOTHING FOOTWEAR AND ACCESSORIES						
6.01 CLOTHING						
6.011 WOMENSWEAR						
Dresses						
(a) casual	each	76.47	97.75	97.75	0.00	27.83
(b) formal	each	260.00	280.00	265.00	-5.36	1.92
Blouses	each	37.06	38.00	38.00	0.00	2.54
Skirts	each	59.58	69.72	69.71	-0.01	17.00
Suits	each	159.30	196.65	196.65	0.00	23.45
Dressmaking	2 piece	50.00	50.00	50.00	0.00	0.00
Dressmaking Material						
(a) formal	per yard	11.63	11.80	11.80	0.00	1.46
(b) semi-formal	per yard	13.60	11.28	12.70	12.59	-6.62
6.012 GIRLSWEAR						
Dresses						
(a) casual	Each	59.21	65.98	65.98	0.00	11.43
(b) formal	Each	99.88	113.85	115.94	1.84	16.08
Girls' blouses	each	41.15	38.50	38.50	0.00	-6.44
6.013 MENSWEAR						
Shirts						
(a) long sleeve	each	84.00	87.09	87.09	0.00	3.68
(b) short sleeve	each	49.56	43.36	43.36	0.00	-12.51
Suits	Each	331.67	285.00	285.00	0.00	-14.07
Pants						
men's dress pants	each	79.66	80.33	80.33	0.00	0.84
Men's Jeans	each	113.63	104.06	104.06	0.00	-8.42
Sportswear						
(a) sneakers	pair	79.95	79.95	79.95	0.00	0.00
(b) shorts	each	37.83	30.35	30.35	0.00	-19.77
6.014 BOYSWEAR						
Shirts						
(a) long sleeve	each	42.66	45.89	45.89	0.00	7.57
(b) short sleeve	each	25.70	25.19	25.19	0.00	-1.98
Pants	each	40.75	40.88	40.88	0.00	0.32
Boy's Jeans	each	52.80	43.24	43.24	0.00	-18.11
6.015 INFANTSWEAR						
Disposable diapers (pkg/12)	Pkg/12	14.17	17.45	17.45	0.00	23.15
Cotton Diapers (pkg/12)	dozen	41.15	41.15	41.15	0.00	0.00
6.02 FOOTWEAR						
6.021 WOMENS' SHOES						
(a) casual	pair	63.30	76.83	71.18	-7.35	12.45
(b) formal	pair	65.62	83.78	82.71	-1.28	26.04
6.022 GIRL'S SHOES						
(a) casual	pair	39.09	46.30	56.00	20.95	43.26
(b) formal	pair	63.15	66.67	66.67	0.00	5.57
6.023 BOY'S SHOES						
(a) casual	pair	68.15	39.09	46.32	18.50	-32.03
(b) formal	pair	49.16	56.32	56.32	0.00	14.56
6.024 MEN'S SHOES						
(a) casual	pair	79.57	79.57	79.57	0.00	0.00
(b) formal	pair	127.74	130.39	130.39	0.00	2.07
6.03 CLOTHING ACCESSORIES						
Watches						
Women's	each	272.50	255.00	255.00	0.00	-6.42
Men's	each	360.00	395.00	395.00	0.00	9.72
Handbags/Pocket Books	each	59.20	70.26	72.13	2.66	21.84

TABLE 8 continued

ITEMS	UNIT	BASE PRICE FEB. 1994	DEC. 1997	DEC. 1998	% CHANGE DEC. 97 TO DEC. 98	% CHANGE FEB. 1994 TO DEC. 98
7.0 MISCELLANEOUS EXPENSES						
7.01 PERSONAL CARE SUPPLIES						
Personal Hygiene						
Toilet Soap	135g	1.48	1.95	1.95	0.00	31.76
Tooth Paste	80ml	4.87	6.13	6.05	-1.31	24.23
Deodorant	175ml	13.08	13.76	13.76	0.00	5.20
Tooth Brushes	each	4.30	4.30	4.30	0.00	0.00
Personal Toilet Supplies						
Cosmetic Cream	10 oz.	21.45	23.45	23.28	-0.72	8.53
Body Lotion	16 fl.oz.	12.73	12.95	13.95	7.72	9.58
Perfumes	50ml	39.73	36.23	35.59	-1.77	-10.42
Colognes	2 fl.oz.	19.73	18.73	20.59	9.93	4.36
Hair Care and Supplies						
Hair cuts(men)	one	10.00	10.00	10.00	0.00	0.00
Hair dressing(ladies)						
Hair perm	one	46.67	46.67	50.00	7.14	7.14
Hair wash & set	one	18.33	16.67	20.00	19.98	9.11
7.02 PATENT MEDICINES						
Liquid Medicine	120ml	11.43	12.93	14.98	15.85	31.06
Medicated Cream	30g	8.73	11.00	10.93	-0.64	25.20
Vitamin Supplement(liquid)	300ml	16.43	22.98	24.98	8.70	52.04
7.03 CONTRACEPTIVES						
Oral Pills	pkg	3.60	3.60	4.40	22.22	22.22
Condom	pkg	4.95	3.95	3.95	0.00	-20.20
7.04 HEALTH EXPENSES						
Doctor's Fees	per visit	50.00	60.00	60.00	0.00	20.00
Dentist's Fees	per visit	30.00	30.00	40.00	33.33	33.33
Eye Specialist	per exam.	60.00	80.00	80.00	0.00	33.33
Health Insurance	month	25.67	25.67	27.93	8.80	8.80
7.05 PERSONAL LIFE INSURANCE	month	99.50	99.50	101.97	2.48	2.48
7.06 SPORTING ACTIVITIES						
Entrance Fees To Spectator Sports	one ticket	5.00	5.00	5.00	0.00	0.00
7.07 OTHER RECREATIONAL ACTIVITIES						
Marpin TV Service	month	50.00	50.00	50.00	0.00	0.00
Cinema Fares	one ticket	4.00	5.00	5.00	0.00	25.00
7.08 READING MATERIAL & OTHER EXPENSES						
Newspaper	each	1.25	1.75	1.75	0.00	40.00
Magazines	each	6.18	6.18	8.11	31.23	31.23
7.09 EDUCATIONAL EXPENSES						
School fees	month	31.67	83.33	83.33	0.00	163.12
Music lessons	month	40.00	50.00	50.00	0.00	25.00
Text Books(High School)						
(a) English form 1	each	27.37	27.02	28.52	5.55	4.20
(b) English form 4	each	34.30	30.20	34.70	14.90	1.17
(c) Maths form 1	each	28.75	32.20	32.20	0.00	12.00
(d) Maths form 4	each	33.28	39.11	39.11	0.00	17.52
(e) Science form 1	each	26.00	31.73	31.73	0.00	22.04
(e) Biology form 4	each	39.55	44.69	46.19	3.36	16.79
7.10 STATIONERY & WRITING EQUIPMENT						
Envelopes						
Envelopes airmail	pkg/25	0.89	0.89	0.97	8.99	8.99
Envelopes inland	pkg/25	1.12	1.42	1.42	0.00	26.79
Stamps						
Stamps airmail to U.K.	each	0.90	0.90	0.90	0.00	0.00
Stamps airmail to USA	each	0.90	0.90	0.90	0.00	0.00
Stamps airmail(domestic/inland)	each	0.25	0.25	0.25	0.00	0.00

CHART 1 MONTHLY ALL ITEMS INDICES - 1998



•

•

CHART 2
PERCENT CHANGE IN ALL ITEMS INDICES

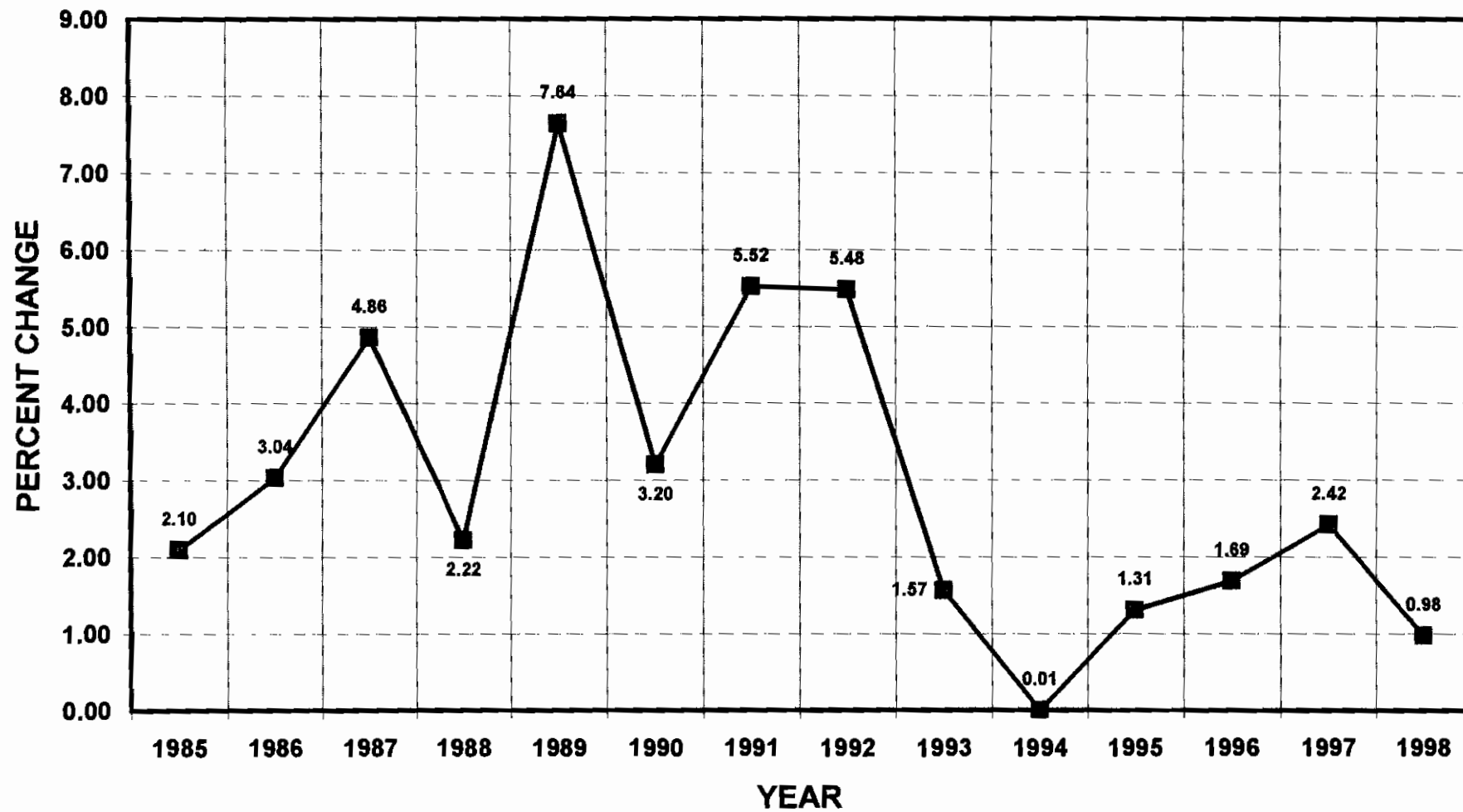


CHART 3
PERCENT CHANGE IN GROUP INDICES: 97-98

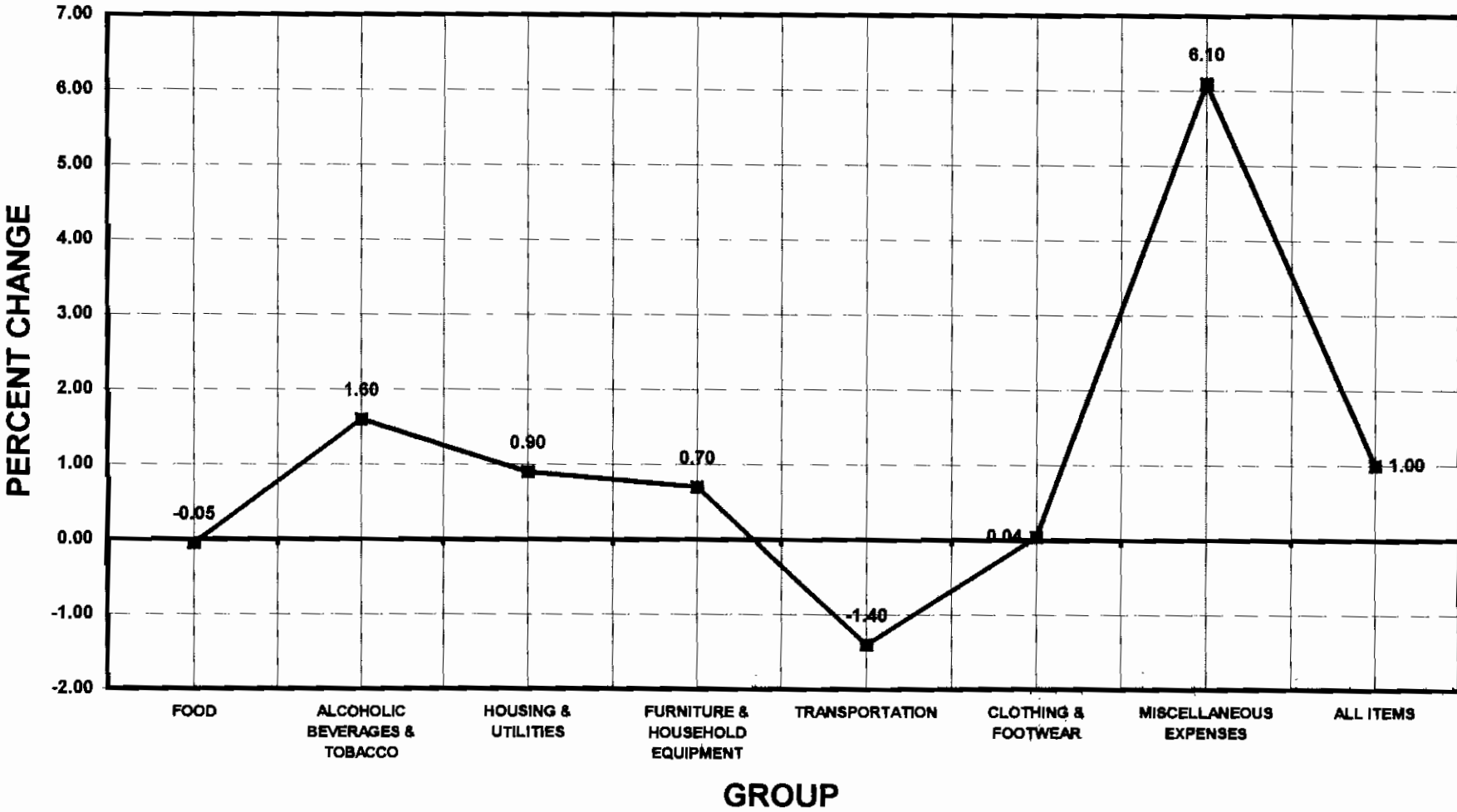
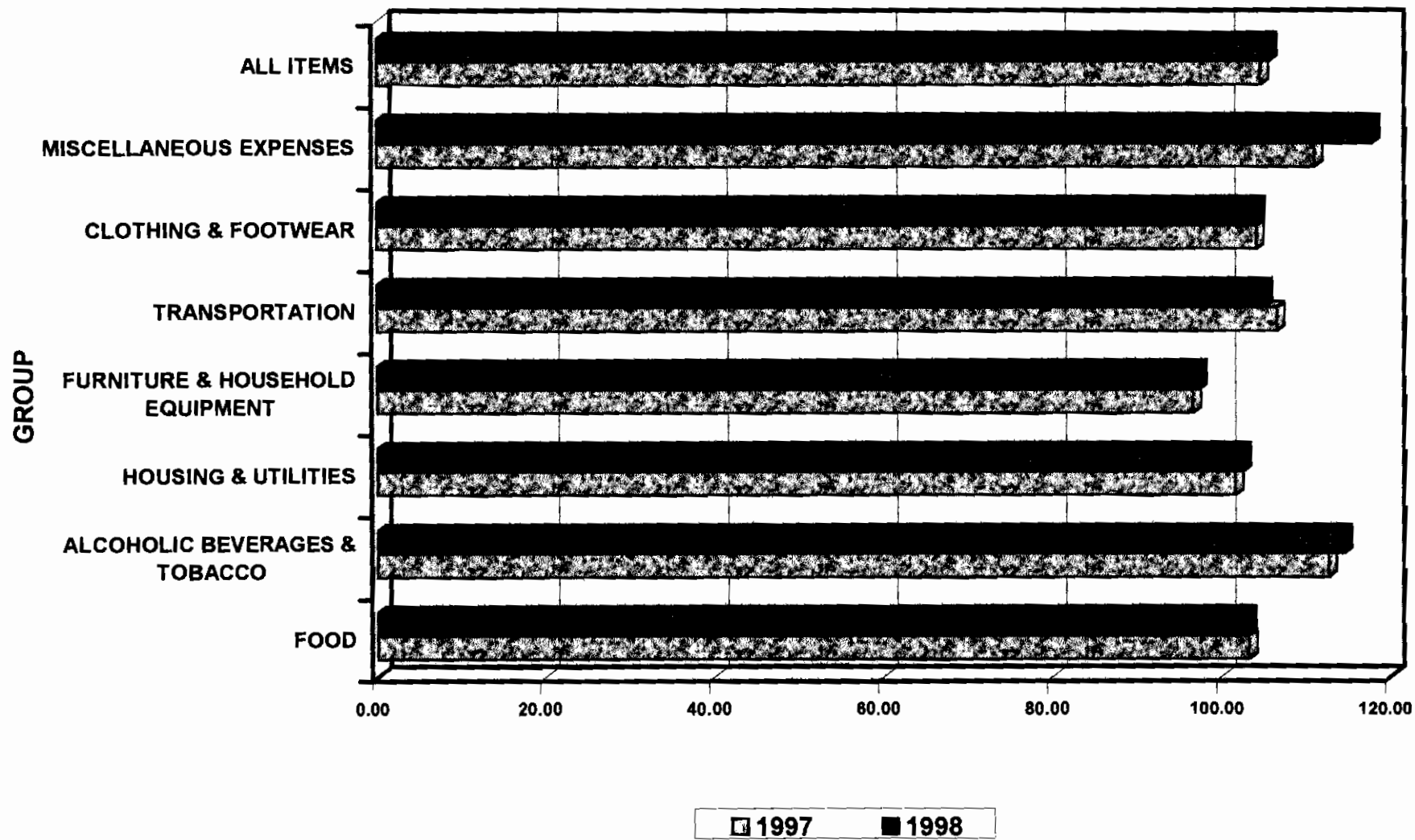


CHART 4
GROUP INDICES: 1997 - 1998



Contact us for more information...

External Trade Statistics

Travel Statistics

Consumer Price Index

National Accounts

Economic Indicators

Balance of Payments

Population Statistics

Demographic Statistics

Education Statistics

Central Statistical Office

Ministry of Finance

Tel (767)-448-2401 Ext. 3400 – 3407

Fax: (767)-448-5200

Price: EC\$25.00