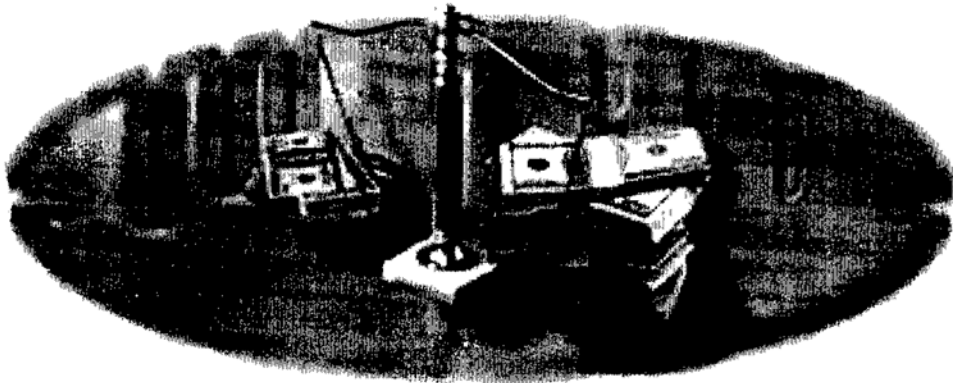




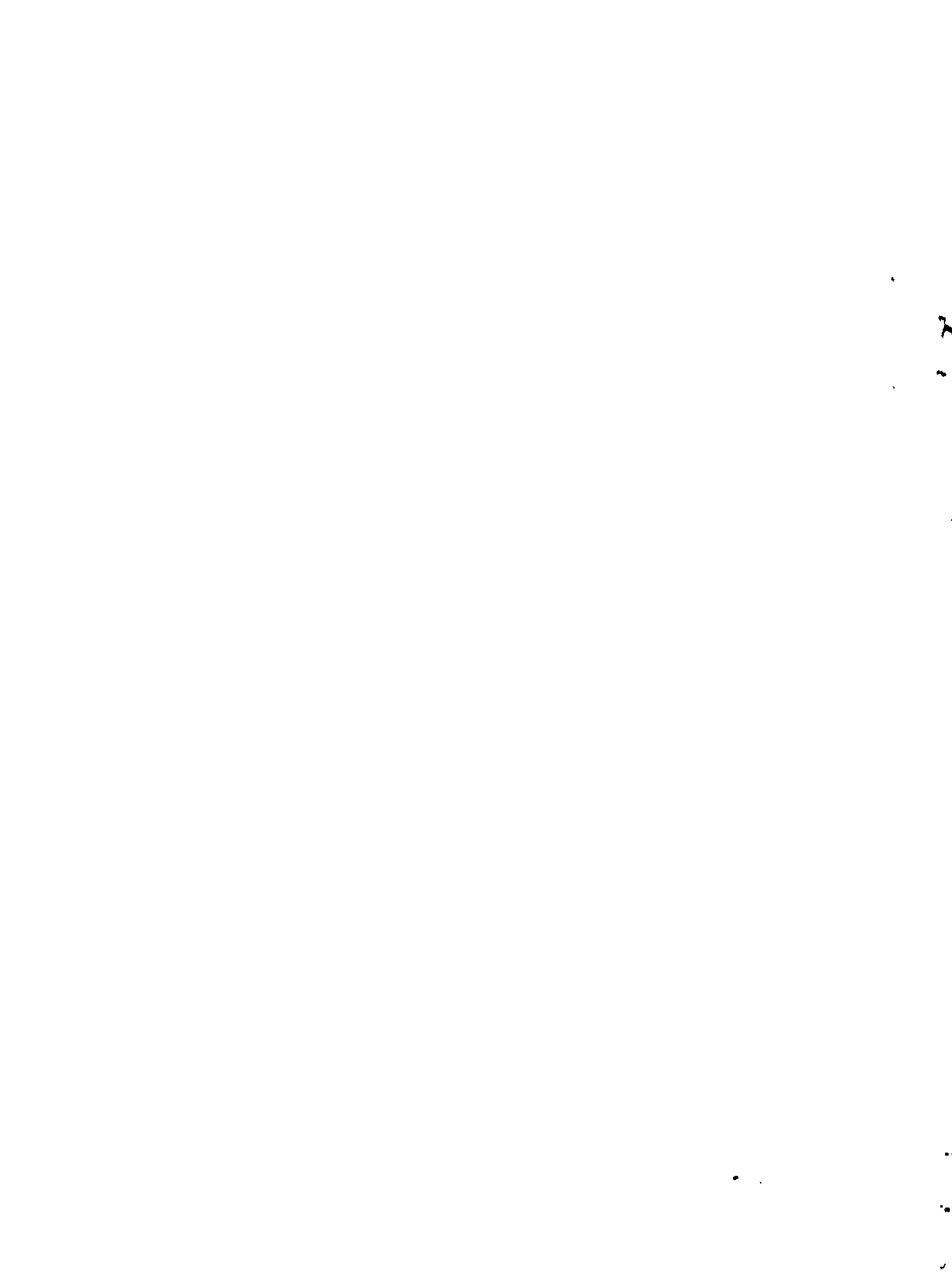
Commonwealth of Dominica

CONSUMER PRICE INDICES



2006

CENTRAL STATISTICAL OFFICE
Ministry of Finance, Industry & Planning
Roseau, Dominica



PREFACE

The Consumer Price Index is based on the 1997/1998 Household Expenditure Survey which covered all ten parishes or population zones in Dominica. The survey covered 1000 households; data from 858 households was used for the development of the Consumer Price Index.

In contrast to the seven group indices represented in the last series, the current Consumer Price Index records eleven group indices. **FUEL AND LIGHT, EDUCATIONAL EXPENSES** and **PERSONAL CARE SERVICES** (previously recorded as sub-group indices) are the new group indices added to the All Item Index. January 2001 was established as the base period in calculating this new series.

CHIEF STATISTICIAN

March 2007

CONTENT	i-ii
PREFACE	iii
HOUSEHOLD INCOME AND EXPENDITURE SURVEY	iv-viii
REVIEW 2006 CONSUMER PRICE INDEX	ix-x
TABLE	
1 MONTHLY CONSUMER PRICE INDICES 2001-2006	1
1A MONTHLY CONSUMER PRICE INDICES 1995-2000	2
2 MONTHLY PERCENTAGE CHANGES 2001-2006	3
2A MONTHLY PERCENTAGE CHANGES 1995-2000	4
3 ALL ITEMS INDICES BY YEAR AND MONTH 1995-2006	5
4 MONTHLY INDEX OF FOOD AND NON-FOOD GROUPS 1993-2006	6
5 PERCENTAGE CHANGE IN GROUP INDICES 2001-2006	7
5A PERCENTAGE CHANGE IN GROUP INDICES 1995-2000	8
5B WEIGHTS AND PERCENTAGE CHANGE IN UTILITIES AND OTHER SERVICES IN SURVEY PERIOD	9
6 PERCENTAGE CHANGE IN GROUPS AND SUB-GROUP INDICES FOR THE MONTHS OF JANUARY 2006 AND DECEMBER 2005 OVER THE BASE PERIOD	10-11
6A GROUP AND SUB-GROUP INDICES JAN - DEC 2002 TO JAN - DEC 2006 AND PERCENTAGE CHANGE FROM BASE TO 2006	12-13
7 GROUP AND SUB-GROUP INDICES FEB 1990- FEB 2000	14

8	PERCENTAGE CHANGE IN GROUP AND SUB-GROUP INDICES 2001 BASE TO JANUARY TO DECEMBER 2006	15
8A	PERCENTAGE CHANGE IN GROUP AND SUB-GROUP INDICES FROM 1994 BASE TO JANUARY TO DECEMBER 2000	16
9	PRICE MOVEMENTS OF SELECTED ITEMS IN BASE YEARS JULY 1984, FEBRUARY 1994 AND JANUARY 2001	17-18
10	PRICE MOVEMENTS OF SELECTED ITEMS FEBRUARY 1993 TO FEBRUARY 2000	19-20
11	PRICE MOVEMENTS OF SELECTED ITEMS JANUARY 2001 BASE COMPARED WITH DECEMBER 2004, 2005 AND 2006 PRICES	21-29
12	AVERAGE PRICE OF SELECTED FOOD ITEMS, 2005 AND 2006 IN COMPARISON TO BASE YEAR PRICES	30-32
13	PRICES OF SELECTED FOOD ITEMS FROM VARIOUS AREAS DECEMBER 2006	33
14	PRICES OF SELECTED FOOD ITEMS FROM VARIOUS SOURCES: ROSEAU	34
15	PRICES OF SELECTED FOOD ITEMS FROM VARIOUS SOURCES: PORTSMOUTH	35
16	PRICES OF SELECTED FOOD ITEMS: CARIB RESERVE	36
17	PRICES OF SELECTED FOOD ITEMS: LAPLAINE	37
18	PRICES OF SELECTED FOOD ITEMS: WESLEY	38

CHARTS

1	MONTHLY ALL ITEMS INDICES 2006	39
2	PERCENTAGE CHANGE IN ALL ITEMS INDICES 1995-2006	40

DOMINICA HOUSEHOLD INCOME AND EXPENDITURE SURVEY

The Dominica Household Income and Expenditure Survey (HIES) was conducted from November 1997 to December 1998 and covered all population zones or parishes.

The survey covered 1000 households distributed almost evenly over a twelve-month period. It was also necessary for the survey design to take into account the need to have each census division adequately represented.

Administratively, Dominica is divided into eleven parishes namely Roseau, the rest of St. George, St. John, St. Peter, St. Joseph, St. Paul, St. Luke, St. Mark, St. Patrick, St. David and St. Andrew.

Development of the Consumer Price Index

Data on expenditure collected during the conduct of the HIES formed the basis for the development of the Consumer Price Index (C.P.I.). A total of 1000 households were interviewed.

For the development of the C.P.I., all households from which data were collected, except those with zero income, were utilized. This resulted in data from 858 households being used in the development of the CPI. In addition, only items or services bought in the country were utilized. Households kept diaries for two weeks on expenditure for Food, Alcoholic Drink, and Tobacco. Expenditure on Accommodation, Fuel and Light, Household Furniture and Furnishings, Transport and Communication, Medical Expenses, Education and Recreation was kept for one year. Where the diary was not completed, an estimate was made for monthly expenditure on food, based on the household size and income.

There were varying reference periods of expenditure for the different sectors. For Clothing and Footwear the period of expenditure was three months while expenditure on Household Operations was for one month. Miscellaneous expenses were also collected in the diary. However in the development of the Consumer Price Index all expenditures were expressed on a monthly basis after which the average expenditure per household by sector was derived. From these, using a base of 1000, weights were then allocated to each sector. In determining item weights, the weight of each sector was proportionately allocated to the items that make up that sector.

A total number of 374 items are recorded from 102 sources. These sources exclude Rent, which is measured in eight categories from 49 households.

The Consumer Price Index measures eleven groups namely Food, Alcoholic Drink and Tobacco, Clothing and Footwear, Housing and Utilities, Fuel and Light, Medical and Health Expenses, Household and Furniture Equipment, Transportation, and Communication, Educational Expenses, Personal Care Services, Miscellaneous/Other.

From the 1997/1998 survey, three new sub-groups, Housing Mortgage Interest Payments, Hospital Expenses, and Health Insurance were included in the Index. The table below shows the shifting of sub-groups to new groups; this explains why certain groups are not strictly comparable.

Sub Group Shifts 1992 - 1998

<i>Sub Groups</i>	<i>Group in which recorded - 1992</i>	<i>Group in which recorded - 1997/1998</i>
Fuel Supplies	Housing and Utilities	Fuel and Light (new group)
Electricity	Housing and Utilities	Fuel and Light (new group)
Home Help	Housing & Utilities	Household and Furniture Equipment
Telephone	Housing & Utilities	Transportation and Communication
Patent Medicines	Miscellaneous Expenses	Medical and Health Expenses(new group)
Doctors' Fees	Miscellaneous Expenses	Medical and Health Expenses(new group)

A national expenditure survey facilitates the compiling of a Consumer Price Index where a basis of consumer spending is measured. The All Items Index is calculated out of 1000 and is segmented into group and sub-group indices. Following a household expenditure survey, weights are derived, by calculating the total value of items consumed to the total quantity consumed.

The public often makes the error of assuming that the monthly and/or yearly Consumer Price Index measures the price of all items on retail shelves and every service available. It must be explained that the Index covers selected consumer items and service based on a household Expenditure Survey. Such items and services rarely change (in the Index) until another survey is conducted. The price the consumer pays for these items is recorded on a monthly basis and within a specific period. The period of price collection for this series is the 14th to 21st of every month. The base for the current consumer Price Index is January 2001.

1992 HOUSEHOLD INCOME AND EXPENDITURE SURVEY

The 1992 Household Expenditure Survey covered the four most populous parishes or population zones in Dominica: St. George, St. Paul, St. Patrick and St. Andrew. From a total of 13,576 households (total of all four parishes), eight hundred and fifty-five (855) were selected for the survey. Five hundred and seventy-four (574) questionnaires were completed, representing a 67.1% response rate. The number of items selected from the 1992 survey was more than twice that of 1982 reflecting a more detailed Consumer Price Index. A total of three hundred (300) items came from eighty-one (81) sources. These sources excluded Rent, which was measured in seven categories from forty-four (44) households.

The addition of new sub-groups and the increase/decrease, in the weights of others showed the change in consumer spending patterns, over the last ten years. The shifts (decreases) in group indices **FOOD, HOUSING AND UTILITIES, FURNITURE AND EQUIPMENT, and ALCOHOLIC BEVERAGES AND TOBACCO** were absorbed by movements (increases) in **TRANSPORTATION, CLOTHING AND FOOTWEAR and MISCELLANEOUS EXPENSES**.

From the 1992 survey, new sub-groups were represented as follows: - Repairs to House, Insurance Payments, Laundry and Dry Cleaning Services, House Cleaning, Repairs to Equipment, Purchase of Motor Vehicles, Transport Insurance and Fees, Clothing Accessories and Personal Life Insurance. February 1994 was established as the base for the series. The period for price collection was the 8th to 21st of every month.

Household Income and Expenditure Survey Consumer Price Index

1992 Weights compared to 1998

The Consumer Price Index 1992 weights compared to 1998 revealed that FOOD continued to record the highest group weight indicating that consumers continue to spend most of their household income on Food. However, the Food group weight recorded an 18.17 percentage decrease over 1992, from a weight of 401.81 in 1992 to 328.8 in 1998. Sub groups contributing to that decline were Vegetables, Fruit and Fruit Preparations, Miscellaneous Foods and Meat (preserved).

The decline in Meat (preserved) is attributed to the sharp reduction in and consequently omission of salted beef and bacon, from the consumer basket.

Consumers however, diverted expenditure on Non-alcoholic Beverages, Oils and Fats, Sugar and Other Sweets, Dairy Products and Frozen Meat. Consumers increased spending on Non-alcoholic Beverages such as coca-cola products, other carbonated drinks and malts. The seasonality of fruits has been observed as one of the main factors contributing to the increase in consumption of carbonated drinks.

The 18.31% increase in Dairy Products reveal that dietary requirements have improved, a positive trend to the promotion of adequate food nutrition. The weight of Oils and Fats almost doubled from 8.97 to 16.40 with the consumption of cooking oil as the main contributor. This is supported by the increase in the “fast food informal sector”.

The Food group recorded new items which were not registered in the 1992 basket revealing new consumption pattern: chicken franks, skim milk, processed cheese, peanut butter, salad dressing, apples, pineapples, mayonnaise, bottled seasoning, canned nuts, and bottled water.

Alcoholic Drink and Tobacco recorded a 41.21% decline from 16.16 to 9.5. A decrease of 30% was recorded in Alcoholic Drinks while the consumption of cigarettes reduced sharply by 75%. Dry tobacco leaves was dropped from the consumer basket. Such indicators reveal success in programs towards the reduction of alcoholic and tobacco consumption.

Utility and Other Services (Table 3) revealed that expenditure on Electricity increased significantly by more than 124.9% from 1992 to 1998 reflecting an average increase of 21% every year.

Telephone Services reflected an 81% increase in expenditure and usage, moving from a weight of 4.85 to 14.6, the main factor contributing to that increase is the additional line of new service.

Water recorded an increase weight of 14.6 in comparison to 4.85 in 1992, reflecting a

201.0% increase in expenditure. This exponential rise can be attributed to the installation of meters in newly constructed buildings instead of the previous flat rate system, which was still predominant in the 1992 Survey. In addition disconnected households previously on the flat rate system were switched to metered installation upon reconnection.

Home Insurance moved from a weight of 2.89 to 10.6 reflecting a 266.8% increase in expenditure. This can be accounted for as new homeowners become more aware of property security services.

Conversely, as all Utility Services increased, Rent decreased drastically. This decline in Rental expenditure can be measured, as more consumers privately owned their dwelling. Expenditure on rent declined by 83.3% while the new sub-group Mortgage Interest recorded 7.70 (a group that did not record a weight, significant enough to be placed in the consumer basket in 1992).

In the Transport group, the weight on Motor Vehicle increased by 67.81%, while annual travel activity declined from a weight of 50.34 in 1992 to 30.00 in 1998.

Clothing and footwear recorded a 20.1% increase in weight. However, the difference in expenditure was higher in footwear than clothing.

The weight on Medicine and other Health expenses increased by 100.6 with new sub-groups – Hospital Expenses and Health Insurance recording weights of 10.4 and 3.2 respectively.

Though Examination fees account for 32% of the weight in Education Expenses, this group (Education Expenses) declined sharply by 41.52% moving from 49.59 in 1992 to 29.00 in 1998. This decline may be attributed to the free Secondary Text book program, specifically for First Forms, while the other factor was the sharp decline in Music Lessons (which was more popular in 1992). In fact, the Survey revealed that consumers did not spend on Music Lessons. Thus currently Music has been eliminated from the Consumer basket whereas, in 1992 it accounted for 1.37.

Other new items “entering” the consumer basket were spectacles, hospital expenses and fees (including surgery), mortgage interest payments, home freezers, water heaters, rental of household furniture, (on hire purchase) gardening services, computers, examination fees, school clothing material, gym services and passport photos.

Items “dropped” from the consumer basket were bacon, fresh milk, breadfruit, soursop, coconut jelly (nuts), ripe bananas, pawpaw, peanuts (unshelled), tobacco, black and white television set, repairs to household equipment and bicycles.

CONSUMER PRICE INDEX 2006 REVIEW

The 2006 Consumer Price Index registered a 2.61 percent increase over the year moving from 106.29 to 109.06. The month of March 2006 recorded the highest increase 1.54 percent, primarily due to the implementation of the value added tax (VAT), registering sharp percentage increases in **ALCOHOLIC DRINK AND TOBACCO**, 7.95, **PERSONAL CARE SERVICES**, 5.52 and **FOOD**, 2.13 percent. On the other hand the largest percentage decrease of 0.93 in the monthly All Items Index was recorded in October mainly due to a 6.44 percent drop in the **FUEL AND LIGHT** group index (table 2).

The 2006 period recorded the highest annual average percentage increase (since the 2001 base period). Percentage increases were noted in **ALCOHOLIC BEVERAGES AND TOBACCO** 7.66; **FUEL AND LIGHT**, 6.87; **PERSONAL CARE SERVICES**, 6.29; **MEDICAL AND HEALTH EXPENSES**, 5.17; and **FOOD**, 4.09 (Table 5).

The **FUEL AND LIGHT** group index rose by, 6.87 percent with increases in Electricity 7.16 and Fuel Supplies 4.87. A 6.29 percent rise in the **PERSONAL CARE SERVICES** group index resulted from increases in laundry, passport photo and cable television services. Increase in Patent Medicines, 8.53; Doctors' Fees, 7.44 and Miscellaneous Medical Expenses, 3.18; contributed to a 5.17 percent increase in the **MEDICAL AND HEALTH EXPENSES** group index. The **FOOD** group index rose by 4.09 percent as percentage increases were recorded in the sub groups Meals Taken Away From Home, 10.89, Meat(preserved), 9.42, Fish and Fish Preparations, 7.51 Miscellaneous Foods, 7.45, Fruit and Fruit Preparations 4.61 and Dairy Products,4.57. The **CLOTHING AND FOOTWEAR** group index recorded a 1.00 percent drop resulting from decreases in Footwear, 2.72 and Clothing Accessories 2.28 (Table 8).

A 9.06 percent increase was recorded in the 2006 average All Item Index over the January 2001 base. This movement resulted from sharp percentage increases of, 45.36 in the **FUEL AND LIGHT** group index followed by **PERSONAL CARE SERVICES**, 13.62, **EDUCATIONAL EXPENSES**, 12.92, **FOOD**, 12.77, **HOUSING AND UTILITIES** 11.51 and **MISCELLANEOUS/OTHER**, 9.20. Significant sub group percentage increases were noted in Electricity, 49.94; Meat (fresh, chilled or frozen), 32.88; Transportation Operational Fees, 31.78; Vegetables, 24.19, Fuel Supplies, 19.10; Repairs to House, 18.47, and Dairy Products 18.46. Decreases were registered in group indices **CLOTHING AND FOOTWEAR**, 3.99 and **HOUSEHOLD AND FURNITURE EQUIPMENT** 2.52. Sub group indices affected by deflation were Recreational Equipment, 20.80, Insurance, Taxes and Fees, particularly fixed telephone (landline) fees, 10.36 and Laundry and Cleaning Equipment 9.72 (Table 6A).

Items recording increases of 10.00 to 24.00 percent over the period December 2005 to December 2006 were grapefruits, ham sandwich, chicken parts (wings) corned beef, cheese, local beans, sweet peppers, cassava farine, passion fruit juice, grapefruits juice, gin, stout, cigarettes, lumber, cement, liquid medicine, carpet(vinyl) , stoves (four burner), fabric softener and pre-school fees. Imported beef, imported pork, pumpkins, green bananas, tannias, ripe plantains, limes, dry coconuts, passion fruit juice, medicated cream, vitamin supplement (liquid) and dentist's fees recorded increases of 25.00 to 50.00 percent.

Over 100 percent increase in price was recorded in green plantains and dry coconuts.

Decreases of 3.00 to 5.00 percent were recorded in chicken whole legs (moving from \$8.28 to \$ 7.97 per kilogram), canned tuna, ovaltine instant breakfast drink, melons, pepper sauce, beers, men's long sleeve shirts boy's formal shoes, men's watches, women's pocket books, cooking gas, electricity, baby blankets, radio recorders, toilet disinfectant, insect repellants, English, Science and Biology secondary school text books.

Decreases of 5.01 to 12.00 percent were registered in local beef, packaged macaroni and cheese, tomatoes, carrots, onions, yams, oranges, tomato ketchup, boy's jeans, women's casual shoes, men's formal shoes, paint and kerosene.

For the same period, peas, canned vegetables, ginger, color television sets and return air fares Dominica/New York registered 15.00 to 30.00 percent decreases.

**TABLE 1A. MONTHLY CONSUMER PRICE INDICES
1995-2000**

FEBRUARY 1994=100.00

GROUPS	WEIGHTS	YEAR	JAN	FEB	MAR	APR	MAY	JUN	JUL	AUG	SEP	OCT	NOV	DEC	AVG.
FOOD	401.81	1995	97.28	97.96	97.49	97.56	98.43	98.24	97.89	97.34	97.73	96.73	96.89	99.27	97.73
		1996	98.86	98.01	98.09	98.60	98.74	98.98	100.21	99.43	100.77	99.84	101.29	101.93	99.56
		1997	102.05	101.64	102.55	102.57	103.38	103.22	103.59	103.94	103.85	103.63	104.31	103.49	103.19
		1998	102.75	102.39	102.43	101.96	101.69	101.55	103.11	104.47	104.04	103.49	104.18	105.61	103.14
		1999	104.92	105.20	105.05	103.37	103.15	102.17	102.01	103.21	102.45	102.69	103.28	103.85	103.45
		2000	102.95	102.44	102.61	102.78	102.62	103.41	103.10	103.31	103.42	104.11	103.32	103.30	103.11
ALCOHOLIC BEVERAGES & TOBACCO	16.16	1995	100.22	99.96	99.83	97.86	100.36	100.85	100.95	100.95	100.93	100.92	103.20	105.38	100.95
		1996	107.61	107.61	108.51	108.38	108.47	108.66	109.87	111.98	112.93	114.22	113.86	112.39	110.37
		1997	112.87	111.70	111.50	111.58	111.70	111.69	112.92	113.07	114.35	113.06	113.96	113.96	112.70
		1998	114.24	114.70	114.70	114.70	114.66	114.44	114.51	114.36	114.42	114.42	114.42	114.06	114.47
		1999	113.77	113.75	113.84	113.84	113.84	113.84	113.84	113.40	113.42	113.42	113.31	113.30	113.63
		2000	113.72	113.80	114.02	113.45	113.75	113.62	113.86	113.66	113.66	113.88	113.88	115.65	113.91
HOUSING & UTILITIES	133.71	1995	100.40	100.34	100.30	100.31	100.09	100.60	100.63	99.76	99.00	99.35	99.33	99.29	99.95
		1996	99.38	99.56	99.90	100.04	99.95	99.95	99.51	99.75	99.95	100.65	100.62	100.77	100.00
		1997	100.66	100.50	102.25	101.99	100.85	101.24	101.19	101.45	101.53	101.48	102.74	102.90	101.57
		1998	102.30	102.39	102.59	102.64	102.77	102.81	102.47	102.39	102.37	102.35	102.47	102.73	102.52
		1999	102.60	102.55	103.21	103.34	103.55	104.15	104.50	104.47	107.12	107.27	107.10	107.30	104.76
		2000	107.37	107.25	107.44	108.86	108.74	109.06	109.69	109.22	110.21	109.76	109.48	109.40	108.87
FURNITURE & HOUSEHOLD EQUIPMENT	57.79	1995	97.26	97.35	96.80	96.57	96.32	95.45	97.03	96.87	96.98	96.57	96.55	95.71	96.62
		1996	95.69	95.42	95.26	95.46	95.52	95.70	95.90	95.92	95.62	95.70	95.75	95.84	95.65
		1997	95.92	96.00	96.30	96.41	96.47	96.47	96.72	96.97	96.92	96.62	97.07	96.97	96.57
		1998	97.39	97.39	96.65	96.65	96.67	96.73	96.57	95.99	96.82	97.90	98.85	99.38	97.25
		1999	99.06	99.06	98.94	98.88	99.18	99.34	99.39	99.39	99.02	99.15	99.16	99.37	99.16
		2000	99.29	99.29	99.68	100.35	100.83	100.83	100.83	100.86	100.88	100.90	100.83	101.24	100.48
TRANSPORTATION	162.02	1995	102.29	102.15	102.15	102.12	100.95	100.84	104.51	104.71	103.03	102.13	102.13	104.36	102.61
		1996	105.31	105.67	105.67	105.80	105.14	104.53	106.22	106.40	106.40	106.09	106.09	106.95	105.86
		1997	108.08	108.08	107.22	106.88	106.51	106.48	106.56	105.68	105.45	105.98	105.41	105.98	106.53
		1998	105.52	104.62	103.97	104.22	104.53	105.46	105.83	105.18	104.56	105.86	105.33	105.23	105.03
		1999	106.41	106.13	107.73	108.73	107.97	107.73	106.93	106.00	105.34	104.59	103.73	105.05	106.36
		2000	104.37	105.76	105.95	106.03	107.16	107.92	108.94	107.36	106.70	106.04	107.15	108.37	106.81
CLOTHING & FOOTWEAR	68.35	1995	102.80	102.09	102.14	102.44	102.19	102.33	104.41	103.82	103.25	102.55	102.37	102.71	102.76
		1996	104.21	103.78	103.91	104.09	103.82	104.35	104.07	103.74	103.20	103.25	103.25	103.29	103.75
		1997	103.63	103.63	103.85	103.85	103.73	104.00	104.29	104.38	104.38	104.52	104.54	104.54	104.11
		1998	104.54	104.54	104.30	104.70	104.70	104.34	104.34	103.51	103.49	103.42	103.42	104.51	104.15
		1999	104.43	104.43	104.58	104.58	104.58	104.58	104.58	104.58	104.57	104.57	104.57	105.45	104.63
		2000	106.58	107.29	107.59	107.74	107.85	108.02	108.02	108.02	108.06	108.07	108.14	108.84	107.85
MISCELLANEOUS EXPENSES	160.16	1995	104.10	104.08	104.08	104.61	105.40	105.83	106.11	105.99	106.63	106.38	106.31	106.37	105.49
		1996	106.46	106.60	106.61	106.68	106.74	108.47	107.65	107.89	106.94	107.01	107.89	107.69	107.22
		1997	108.12	108.33	108.07	108.33	108.33	108.27	108.30	109.00	116.07	116.07	116.07	116.59	111.01
		1998	116.69	116.69	116.69	116.69	116.69	116.77	116.95	117.31	118.74	119.90	119.96	120.78	117.82
		1999	120.46	120.46	120.46	120.49	120.99	120.99	120.99	120.98	120.94	121.01	120.92	120.96	120.80
		2000	121.19	121.50	121.50	121.45	121.44	121.44	121.45	121.45	121.45	121.85	122.12	122.28	121.59
ALL ITEMS	1000.00	1995	100.03	100.21	99.99	100.08	100.35	100.35	101.09	100.72	100.57	99.96	100.03	101.36	100.40
		1996	101.51	101.23	101.33	101.61	101.54	101.86	102.45	102.25	102.63	102.33	103.05	103.42	102.10
		1997	103.74	103.57	104.02	103.99	104.10	104.09	104.30	104.47	105.56	105.52	106.00	105.79	104.60
		1998	105.37	105.10	104.98	104.86	104.82	104.91	105.57	105.97	105.97	106.20	106.47	107.29	105.63
		1999	107.11	107.17	107.46	106.97	106.88	106.54	106.40	106.71	106.63	106.64	106.70	107.25	106.87
		2000	106.90	107.00	107.17	107.48	107.62	108.11	108.25	108.01	108.08	108.26	108.13	108.44	107.79

**TABLE 2. CONSUMER PRICE INDEX
MONTHLY PERCENTAGE CHANGES
2001 - 2006**

JANUARY 2001=100.00

GROUPS	WEIGHTS	YEAR	JAN	FEB	MAR	APR	MAY	JUN	JUL	AUG	SEP	OCT	NOV	DEC
FOOD	328.80	2001	1.08	0.52	-0.07	0.17	-0.19	0.20	0.26	0.20	0.02	0.32	0.02	0.69
		2002	0.62	-0.09	-0.42	0.04	0.15	0.02	-0.09	0.04	-0.10	-0.15	0.29	0.05
		2003	-0.16	-0.23	-0.30	-0.09	-0.26	0.02	0.87	1.25	0.42	-0.10	0.21	0.59
		2004	0.11	-0.06	0.50	0.54	-0.41	0.01	0.08	0.43	0.21	-0.13	-0.18	0.23
		2005	0.03	0.63	0.24	0.21	0.01	0.26	0.86	0.42	0.52	-0.13	0.40	0.22
		2006	0.21	-0.15	2.13	0.10	-0.41	0.53	-0.46	0.62	0.58	0.17	0.32	0.76
ALCOHOLIC DRINK & TOBACCO		2001	0.73	-0.21	0.18	0.03	-0.25	0.37	0.00	0.09	-0.05	0.99	0.69	-0.27
		2002	-0.75	0.35	0.64	0.20	-0.03	-0.07	-0.25	-0.18	0.19	-0.02	-0.13	-0.09
		2003	0.11	-0.97	-0.82	-0.84	-0.27	0.40	-1.55	0.34	0.04	0.41	-1.61	0.49
		2004	0.24	0.38	0.00	0.25	0.24	-0.01	0.19	0.04	-1.67	-0.19	-0.04	1.91
		2005	0.26	0.12	-0.11	0.27	-0.55	0.12	-0.49	0.00	1.15	0.42	0.07	0.01
		2006	0.00	0.05	7.95	0.08	-1.02	0.68	0.01	-0.05	-0.08	-0.15	1.89	1.06
CLOTHING & FOOTWEAR	82.10	2001	0.06	0.17	-0.60	-0.38	0.48	-0.50	-0.91	0.01	-0.78	0.68	0.49	-0.33
		2002	0.48	-0.44	-0.79	0.21	0.10	0.05	-0.15	0.01	0.23	-0.06	0.00	-0.09
		2003	0.41	-0.28	-0.94	-0.37	-0.40	-0.24	-0.12	1.12	0.32	-0.76	-0.10	-0.01
		2004	0.39	-0.59	0.92	0.09	-0.13	0.16	-0.08	-0.01	-0.10	0.00	-0.26	-0.13
		2005	0.31	0.17	-0.32	0.09	-0.13	-0.01	0.10	-0.01	0.00	0.11	-0.15	-0.05
		2006	-0.59	-0.24	-0.01	0.00	-0.10	-0.05	-0.01	0.11	0.00	-0.25	0.13	0.06
HOUSING & UTILITIES	111.70	2001	-	0.00	0.00	0.00	0.00	0.52	0.65	0.00	-0.05	-1.12	0.00	-0.01
		2002	0.01	0.00	0.00	0.00	0.00	0.00	0.00	0.00	0.00	0.00	0.00	0.00
		2003	0.00	0.00	0.00	0.00	0.00	1.61	5.76	-0.34	0.00	0.00	0.00	0.00
		2004	0.00	0.00	0.00	0.00	0.00	0.01	0.00	3.30	0.00	0.00	0.00	0.00
		2005	0.00	-0.13	0.00	0.00	0.00	-0.42	0.12	-0.01	-0.38	0.00	0.25	0.00
		2006	0.00	0.62	-0.29	0.00	-0.01	0.00	0.70	0.39	1.60	0.00	0.00	0.00
FUEL AND LIGHT	58.60	2001	-	-1.64	0.67	-1.00	2.88	-0.38	-2.06	-2.25	2.20	-5.93	-0.41	-2.39
		2002	0.56	7.50	1.97	-1.08	-0.15	3.09	-4.27	5.22	2.74	0.65	-1.95	1.81
		2003	0.58	2.67	3.11	-5.91	1.26	-1.74	12.40	-1.57	2.42	0.46	-7.27	1.49
		2004	2.67	1.81	-1.87	4.51	-1.38	1.56	-1.69	2.53	1.99	5.74	-5.05	-9.56
		2005	1.89	5.20	9.51	5.23	-3.54	0.66	2.21	-0.11	5.20	5.68	-11.97	3.30
		2006	-6.40	7.06	0.55	8.59	0.55	-3.84	-0.13	0.62	4.03	-6.44	-0.21	-6.66
MEDICAL AND HEALTH EXPENSES	31.60	2001	-	0.00	0.00	0.05	0.05	0.00	-0.06	0.02	0.00	0.05	0.00	-0.01
		2002	0.00	0.00	0.00	0.04	0.04	0.04	0.04	0.04	0.04	0.04	0.04	0.03
		2003	0.00	0.13	-1.04	-1.09	0.00	0.00	0.31	0.00	0.86	0.00	-0.16	0.00
		2004	0.00	0.00	0.00	0.00	0.00	0.03	0.00	0.00	0.25	0.00	0.00	0.00
		2005	0.00	0.00	0.00	0.00	-0.19	0.00	0.00	0.00	0.00	0.00	0.24	0.00
		2006	0.00	0.00	2.31	0.00	0.00	0.15	0.22	5.71	1.20	0.08	-0.04	0.00
HOUSEHOLD & FURNITURE EQUIPMENT	93.50	2001	-	-0.07	-0.04	0.10	-0.17	0.11	0.12	-0.14	-0.03	0.10	0.18	0.02
		2002	0.02	0.02	-0.12	0.02	0.07	-0.03	0.05	0.13	-0.16	-0.10	0.01	0.05
		2003	0.21	-0.04	-0.59	-0.04	-0.14	-0.22	0.89	0.05	-0.51	0.05	-0.02	-0.09
		2004	-0.08	-0.07	-0.64	-0.31	-0.25	-0.23	-0.22	0.25	-0.08	0.19	-0.03	-0.05
		2005	-0.35	-0.31	-0.28	0.02	-0.04	0.00	0.17	0.16	0.38	-0.29	-0.03	0.03
		2006	-0.01	-0.07	0.39	-0.03	-0.11	-0.13	0.02	-0.34	-0.25	0.30	0.03	-0.08
TRANSPORTA- TION	194.30	2001	-	0.26	2.26	-2.00	1.23	0.88	-0.02	1.11	-3.76	3.99	-2.26	1.57
		2002	-2.56	-0.25	2.66	0.80	-2.34	-4.20	1.39	0.75	0.38	-0.18	-0.42	1.41
		2003	-0.87	-0.63	1.36	-0.80	-0.17	-0.04	3.43	1.02	-1.75	-0.41	0.89	1.89
		2004	0.67	-1.67	0.25	-0.04	1.05	-1.81	0.63	-0.20	-1.44	1.19	-1.81	0.08
		2005	-2.30	-0.32	-0.08	0.02	0.60	0.93	-0.91	-0.74	-1.09	1.77	1.26	0.24
		2006	-1.57	-1.63	2.12	1.49	-0.15	-0.59	1.26	0.65	-1.61	-2.64	0.01	0.91
EDUCATIONAL EXPENSES		2001	0.26	0.07	0.20	-0.05	0.16	-0.52	0.75	0.00	-1.07	0.15	0.08	0.33
		2002	0.31	1.68	0.29	1.85	0.20	0.00	0.00	0.55	0.23	0.09	0.00	0.00
		2003	0.77	1.02	0.15	0.27	-0.25	-0.07	2.06	0.15	0.21	-1.03	0.84	-0.03
		2004	0.00	-0.04	0.00	0.09	1.08	0.04	0.00	-0.41	0.97	-0.06	-0.15	-0.01
		2005	0.02	0.68	0.82	0.00	-0.09	-1.34	-1.32	0.35	1.71	0.08	0.16	-0.18
		2006	0.00	-0.06	0.55	-0.32	0.01	-0.01	0.23	-0.82	0.99	-0.07	0.53	0.07
PERSONAL CARE SERVICES	42.50	2001	-	0.00	0.00	0.00	0.00	0.00	0.00	0.00	0.00	0.00	0.00	0.00
		2002	0.00	1.68	0.00	0.00	0.00	0.00	0.00	3.58	0.00	0.00	0.00	0.00
		2003	0.00	0.00	0.00	0.00	0.00	0.00	1.72	0.00	0.00	0.19	0.00	0.00
		2004	0.00	0.10	0.00	0.00	0.00	0.00	0.00	0.00	0.00	0.01	0.00	0.00
		2005	0.00	0.00	0.00	0.00	0.00	0.00	0.02	2.77	0.00	0.00	0.00	0.00
		2006	0.00	0.00	5.52	0.00	0.00	0.00	0.00	0.00	0.00	0.00	0.00	0.00
MISCELLANEOUS EXPENSES	18.40	2001	-	0.66	0.79	-0.29	-0.27	-0.80	0.30	-0.57	0.52	0.42	0.02	0.64
		2002	0.32	0.00	-0.38	-0.12	0.18	0.28	0.43	0.10	0.11	0.00	0.29	-0.08
		2003	0.76	0.48	-0.31	0.22	0.04	0.02	-0.25	0.90	0.41	0.10	2.15	0.07
		2004	-0.06	-0.35	-0.02	0.36	-0.08	-0.11	0.03	-0.02	0.54	0.04	0.07	-0.19
		2005	-0.55	-0.32	-0.22	0.46	0.05	0.50	0.02	0.49	0.98	0.25	-0.05	-0.13
		2006	-0.14	-0.15	0.15	-0.07	0.29	-0.55	-0.03	0.65	-0.52	-0.52	-0.56	0.79
ALL ITEMS	961.50	2001	0.49	0.15	0.42	-0.42	0.36	0.22	-0.01	0.13	-0.71	0.57	-0.40	0.32
		2002	-0.20	0.02	0.43	0.18	-0.39	-0.61	-0.04	0.63	0.22	-0.06	-0.09	0.39
		2003	-0.09	-0.02	0.18	-0.63	-0.09	-0.05	2.55	0.57	-0.02	-0.15	-0.22	0.64
		2004	0.36	-0.27	0.10	0.46	-0.03	-0.24	0.01	0.66	-0.04	0.59	-0.12	-0.57
		2005	-0.32	0.47	0.68	0.48	-0.19	0.23	0.28	0.15	0.44	0.72	-0.62	0.35
		2006	-0.75	0.20	1.54	0.94	-0.14	-0.26	0.15	0.56	0.44	-0.93	0.13	-0.07

TABLE 2A.

CONSUMER PRICE INDEX
MONTHLY PERCENTAGE CHANGES
1995 - 2000

FEBRUARY 1994=100.00

GROUPS	WEIGHTS	YEAR	JAN	FEB	MAR	APR	MAY	JUN	JUL	AUG	SEP	OCT	NOV	DEC
FOOD	401.81	1995	0.38	0.70	-0.48	0.07	0.89	-0.19	-0.36	-0.56	0.40	-1.02	0.17	2.46
		1996	-0.41	-0.86	0.08	0.52	0.14	0.24	1.24	-0.78	1.35	-0.92	1.45	0.63
		1997	0.12	-0.40	0.90	0.02	0.79	-0.15	0.36	0.34	-0.09	-0.21	0.66	-0.79
		1998	-0.72	-0.35	0.04	-0.46	-0.26	-0.14	1.54	1.32	-0.41	-0.53	0.67	1.37
		1999	-0.65	0.27	-0.14	-1.60	-0.21	-0.95	-0.16	1.18	-0.74	0.23	0.57	0.55
		2000	0.34	-0.50	0.17	0.17	-0.16	0.77	-0.30	0.20	0.11	0.67	-0.76	-0.02
ALCOHOLIC BEVERAGES & TOBACCO	16.16	1995	-1.04	-0.26	-0.13	-1.97	2.55	0.49	0.10	0.00	-0.02	-0.01	2.26	2.11
		1996	2.12	0.00	0.84	-0.12	0.08	0.18	1.11	1.92	0.85	1.14	-0.32	-1.29
		1997	0.42	-1.04	-0.18	0.07	0.11	-0.01	1.10	0.13	1.13	-1.13	0.80	0.00
		1998	0.25	0.40	0.00	0.00	-0.03	-0.19	0.06	-0.13	0.05	0.00	0.00	-0.31
		1999	-0.25	-0.02	0.08	0.00	0.00	0.00	0.00	-0.39	0.02	0.00	-0.10	-0.01
		2000	-1.67	0.07	0.19	-0.50	0.26	-0.11	0.21	-0.18	0.00	0.19	0.00	1.55
HOUSING & UTILITIES	133.71	1995	0.11	-0.06	-0.04	0.01	-0.22	0.51	0.03	-0.86	-0.76	0.35	-0.02	-0.04
		1996	0.09	0.18	0.34	0.14	-0.09	0.00	-0.44	0.24	0.20	0.70	-0.03	0.15
		1997	-0.10	-0.16	1.74	-0.25	-1.12	0.39	-0.05	0.26	0.08	-0.05	1.24	0.16
		1998	-0.58	0.09	0.20	0.05	0.13	0.04	-0.33	-0.08	-0.02	-0.02	0.12	0.25
		1999	-0.13	-0.05	0.64	0.13	0.20	0.58	0.34	-0.03	2.54	0.14	-0.16	0.19
		2000	-1.86	-0.11	0.18	1.32	-0.11	0.29	0.58	-0.43	0.91	-0.41	-0.26	-0.07
FURNITURE & HOUSEHOLD EQUIPMENT	57.79	1995	-0.34	0.09	-0.56	-0.24	-0.26	-0.90	1.66	-0.16	0.11	-0.42	-0.02	-0.87
		1996	-0.02	-0.28	-0.17	0.21	0.06	0.19	0.21	0.02	-0.31	0.08	0.05	0.09
		1997	0.08	0.08	0.31	0.11	0.06	0.00	0.26	0.26	-0.05	-0.31	0.47	-0.10
		1998	0.43	0.00	-0.76	0.00	0.02	0.06	-0.17	-0.60	0.86	1.12	0.97	0.54
		1999	-0.32	0.00	-0.12	-0.06	0.30	0.16	0.05	0.00	-0.37	0.13	0.01	0.21
		2000	-1.93	0.00	0.39	0.67	0.48	0.00	0.00	0.03	0.02	0.02	-0.07	0.41
TRANSPORTATION	162.02	1995	0.00	-0.14	0.00	-0.03	-1.15	-0.11	3.64	0.19	-1.60	-0.87	0.00	2.18
		1996	0.91	0.34	0.00	0.12	-0.62	-0.58	1.62	0.17	0.00	-0.29	0.00	0.81
		1997	1.06	0.00	-0.80	-0.32	-0.35	-0.03	0.08	-0.83	-0.22	0.50	-0.54	0.54
		1998	-0.43	-0.85	-0.62	0.24	0.30	0.89	0.35	-0.61	-0.59	1.24	-0.50	-0.09
		1999	1.12	-0.26	1.51	0.93	-0.70	-0.22	-0.74	-0.87	-0.62	-0.71	-0.82	1.27
		2000	-3.69	1.33	0.18	0.08	1.07	0.71	0.95	-1.45	-0.61	-0.62	1.05	1.14
CLOTHING & FOOTWEAR	68.35	1995	-0.95	-0.69	0.05	0.29	-0.24	0.14	2.03	-0.57	-0.55	-0.68	-0.18	0.33
		1996	1.46	-0.41	0.13	0.17	-0.26	0.51	-0.27	-0.32	-0.52	0.05	0.00	0.04
		1997	0.32	0.00	0.21	0.00	-0.12	0.26	0.28	0.09	0.00	0.13	0.02	0.00
		1998	0.00	0.00	-0.23	0.38	0.00	-0.34	0.00	-0.80	-0.02	-0.07	0.00	1.05
		1999	-0.07	0.00	0.14	0.00	0.00	0.00	0.00	0.00	-0.01	0.00	0.00	0.84
		2000	-2.08	0.67	0.28	0.14	0.10	0.16	0.00	0.00	0.04	0.01	0.06	0.65
MISCELLANEOUS EXPENSES	160.16	1995	0.00	-0.02	0.00	0.51	0.76	0.41	0.26	-0.11	0.60	-0.23	-0.07	0.06
		1996	0.08	0.13	0.01	0.07	0.06	1.62	-0.76	0.22	-0.88	0.07	0.82	-0.19
		1997	0.40	0.19	-0.24	0.24	0.00	-0.06	0.03	0.65	6.49	0.00	0.45	0.09
		1998	0.00	0.00	0.00	0.00	0.00	0.07	0.15	0.31	1.22	0.98	0.05	0.68
		1999	-0.26	0.00	0.00	0.02	0.41	0.00	0.00	-0.01	-0.03	0.06	-0.07	0.03
		2000	-0.89	0.26	0.00	-0.04	-0.01	0.00	0.01	0.00	0.00	0.33	0.22	0.13
ALL ITEMS	1000.00	1995	0.07	0.18	-0.22	0.09	0.27	0.00	0.74	-0.37	-0.15	-0.61	0.07	1.33
		1996	0.15	-0.28	0.10	0.28	-0.07	0.32	0.58	-0.20	0.37	-0.29	0.70	0.36
		1997	0.31	-0.16	0.43	-0.03	0.11	-0.01	0.20	0.16	1.04	-0.04	0.45	-0.20
		1998	-0.40	-0.26	-0.11	-0.11	-0.04	0.09	0.63	0.38	0.00	0.22	0.25	0.77
		1999	-0.17	0.06	0.27	-0.46	-0.08	-0.32	-0.13	0.29	-0.07	0.01	0.06	0.52
		2000	-0.33	0.09	0.16	0.29	0.13	0.46	0.13	-0.22	0.06	0.17	-0.12	0.29

TABLE 3.

ALL ITEMS INDICES BY YEAR AND MONTH

1995-2006

JANUARY 2001 = 100.00

YEAR	JAN	FEB	MAR	APR	MAY	JUN	JUL	AUG	SEP	OCT	NOV	DEC	YEAR INDEX	% CHANGE
1995	91.78	91.95	91.74	91.83	92.07	92.07	92.76	92.42	92.28	91.73	91.79	93.01	92.12	1.30
1996	93.14	92.89	92.97	93.23	93.16	93.46	94.01	93.82	94.16	93.89	94.56	94.90	93.68	1.70
1997	95.19	95.04	95.46	95.42	95.52	95.51	95.70	95.86	96.85	96.82	97.26	97.06	95.97	2.45
1998	96.67	96.42	96.31	96.21	96.17	96.26	96.86	97.23	97.23	97.44	97.68	98.44	96.91	0.98
1999	98.27	98.33	98.59	98.14	98.06	97.75	97.63	97.91	97.84	97.85	97.90	98.41	98.06	1.18
2000	98.09	98.18	98.33	98.62	98.75	99.20	99.33	99.11	99.17	99.34	99.22	99.51	98.90	0.86
2001	100.00	100.15	100.57	100.15	100.51	100.73	100.72	100.86	100.14	100.71	100.31	100.64	100.46	1.57
2002	100.43	100.45	100.87	101.05	100.66	100.05	100.01	100.64	100.86	100.81	100.71	101.10	100.64	0.18
2003	101.01	100.99	101.17	100.53	100.44	100.39	102.95	103.53	103.51	103.36	103.13	103.79	102.07	1.42
2004	104.16	103.88	103.98	104.46	104.43	104.17	104.18	104.87	104.83	105.44	105.31	104.71	104.54	2.42
2005	104.37	104.87	105.59	106.09	105.89	106.13	106.42	106.58	107.05	107.83	107.16	107.54	106.29	1.67
2006	106.73	106.95	108.60	109.62	109.47	109.18	109.35	109.96	110.44	109.41	109.55	109.47	109.06	2.61

TABLE 4.

MONTHLY INDEX OF FOOD AND NON-FOOD GROUPS
1993-2006

January 2001 = 100.0

GROUPS	1993	1994	1995	1996	1997	1998	1999	2000	2001	2002	2003	2004	2005	2006
Jan Food	87.48	88.88	90.48	91.93	94.87	94.94	96.84	98.58	100.00	102.80	102.37	104.93	106.26	110.43
Non-Food	87.31	89.31	90.92	92.19	93.58	95.54	96.88	97.75	100.00	99.24	100.22	103.79	103.45	104.93
Feb Food	99.46	98.98	97.04	97.04	100.63	100.71	100.74	98.09	100.52	102.71	102.14	104.87	106.94	110.25
Non-Food	87.52	89.45	90.97	92.43	93.72	95.59	97.03	98.39	99.96	99.23	100.30	103.39	103.85	105.33
Mar Food	93.72	91.79	93.72	93.77	98.09	98.07	100.62	98.26	100.45	102.29	101.84	105.39	107.20	112.60
Non-Food	88.20	89.78	91.22	92.86	94.26	95.76	97.87	98.95	100.63	100.06	100.72	103.29	104.79	106.63
Apr Food	90.74	89.14	92.43	93.36	97.19	97.13	98.49	98.43	100.63	102.32	101.74	105.97	107.42	112.71
Non-Food	88.01	90.21	91.02	92.66	93.86	95.55	97.84	98.92	99.91	100.31	99.82	103.72	105.44	108.11
May Food	88.55	89.43	93.64	93.92	98.43	96.88	98.33	98.27	100.44	102.48	101.48	105.54	107.43	112.25
Non-Food	87.96	90.34	91.15	92.70	93.72	95.78	97.99	99.46	100.55	99.65	99.81	103.89	105.14	108.10
Jun Food	98.84	89.78	93.91	94.84	98.83	97.27	97.86	99.03	100.64	102.50	101.50	105.55	107.71	112.84
Non-Food	87.98	90.00	90.90	92.72	93.46	95.71	97.72	99.38	100.77	98.72	99.85	103.50	105.36	107.39
Jul Food	96.31	89.50	93.71	95.96	99.22	98.73	97.66	98.73	100.90	102.40	102.38	105.64	108.63	112.32
Non-Food	87.45	90.60	91.87	92.60	93.35	95.49	97.40	95.54	100.64	98.72	103.23	103.47	105.34	107.89
Aug Food	96.48	91.54	93.09	95.14	99.42	100.02	98.83	98.93	101.10	102.44	103.65	106.09	109.10	113.02
Non-Food	87.28	90.51	91.60	92.60	93.25	95.21	97.11	98.96	100.74	99.64	103.47	104.27	105.35	108.46
Sep Food	95.48	92.34	93.45	96.44	99.43	99.53	98.16	99.04	101.12	102.34	104.09	106.32	109.67	113.67
Non-Food	87.36	89.72	90.44	91.71	94.18	94.65	96.55	98.09	99.66	100.02	103.23	104.09	105.77	108.85
Oct Food	95.22	93.45	92.61	95.58	99.21	99.11	98.32	99.70	101.44	102.19	103.99	106.18	109.53	113.87
Non-Food	87.87	90.15	90.52	92.24	94.73	95.77	96.92	98.47	100.24	100.01	103.05	105.08	106.99	107.23
Nov Food	96.28	92.76	92.85	97.03	99.94	99.84	98.95	98.95	101.46	102.48	104.20	105.98	109.97	114.23
Non-Food	87.77	89.88	89.97	91.86	94.24	95.19	96.04	98.16	99.63	99.72	102.60	104.99	105.79	107.26
Dec Food	96.40	92.78	95.10	97.57	99.13	101.11	99.52	98.93	102.16	102.54	104.82	106.23	110.20	115.10
Non-Food	88.16	90.10	90.82	92.27	94.67	95.80	96.76	98.89	99.88	100.27	103.29	103.96	106.24	106.72
AVG Food	94.58	91.70	93.50	95.22	98.70	98.61	98.69	98.75	100.91	102.46	102.85	105.72	108.34	112.77
Non-Food	87.74	90.00	90.95	92.40	93.92	95.50	97.18	98.41	100.22	99.63	101.63	103.95	105.29	107.24

TABLE 5.

**PERCENTAGE CHANGE IN GROUP INDICES
2001 - 2006**

JANUARY 2001 = 100.00

GROUP	WEIGHTS	2006	2005	2004	2003	2002	2001	JANUARY 2001 = 100.00				
								% CHANGE '01- '02	% CHANGE '02- '03	% CHANGE '03- '04	% CHANGE '04- '05	% CHANGE '05- '06
FOOD	328.80	112.77	108.34	105.72	102.85	102.46	100.91	1.54	0.38	2.79	2.48	4.09
ALCOHOLIC BEVERAGES & TOBACCO	9.50	106.42	98.85	97.70	98.62	101.58	100.40	1.18	-2.91	-0.93	1.18	7.66
CLOTHING AND FOOTWEAR	82.10	96.01	96.98	97.05	96.88	97.96	98.90	-0.95	-1.10	0.18	-0.07	-1.00
HOUSING AND UTILITIES	111.70	111.51	110.19	108.56	103.71	100.00	100.33	-0.33	3.71	4.68	1.50	1.20
FUEL AND LIGHT	58.60	145.36	136.01	120.59	112.09	100.63	97.00	3.74	11.39	7.58	12.79	6.87
MEDICAL AND HEALTH EXPENSES	31.60	104.81	99.66	99.57	99.32	100.26	100.06	0.20	-0.94	0.25	0.09	5.17
HOUSEHOLD AND FURNITURE EQUIPMENT	93.50	97.48	97.39	98.37	99.75	100.11	99.97	0.14	-0.36	-1.38	-1.00	0.09
TRANSPORTATION	194.30	100.74	100.14	101.19	98.78	98.09	101.84	-3.68	0.70	2.44	-1.04	0.60
EDUCATIONAL EXPENSES	29.00	112.92	112.05	110.74	108.45	104.10	100.09	4.01	4.18	2.11	1.18	0.78
PERSONAL CARE SERVICES	42.50	113.62	106.90	105.66	104.52	101.49	100.00	1.49	2.99	1.09	1.17	6.29
MISCELLANEOUS EXPENSES	18.40	109.20	108.02	107.49	104.74	102.13	100.65	1.47	2.56	2.63	0.49	1.09
ALL ITEMS	1000.00	109.06	106.29	104.54	102.07	100.64	100.46	0.18	1.42	2.42	1.67	2.61

TABLE 5A.

PERCENTAGE CHANGE IN GROUP INDICES
1995-2000

February 1994 = 100.0

GROUP	WEIGHTS	1995	% CHANGE '94-'95	1996	% CHANGE '95-'96	1997	% CHANGE '96-'97	1998	% CHANGE '97-'98	1999	% CHANGE '98-'99	2000	% CHANGE 99-'00
FOOD	401.81	97.7	1.7	99.6	1.9	103.2	3.6	103.1	-0.1	103.5	0.4	103.1	-0.3
ALCOHOLIC BEVERAGES & TOBACCO	16.16	101.0	0.4	110.4	9.3	112.7	2.1	114.5	1.6	113.6	-0.8	113.9	0.2
HOUSING & UTILITIES	133.71	99.9	-0.2	100.0	0.1	101.4	1.4	102.5	1.1	104.8	2.2	108.9	3.9
FURNITURE & HOUSEHOLD EQUIP.	57.79	96.6	-2.2	95.7	-1.0	97.0	1.4	97.3	0.3	99.2	2.0	100.5	1.3
TRANSPORTATION	162.02	102.6	1.1	105.9	3.2	106.0	0.1	105.0	-0.9	106.4	1.3	106.8	0.4
CLOTHING & FOOTWEAR	68.35	102.8	1.3	103.8	0.9	104.5	0.7	104.2	-0.3	104.6	0.4	107.9	3.1
MISCELLANEOUS EXPENSES	160.16	105.5	3.1	107.2	1.6	116.7	8.9	117.8	0.9	120.8	2.5	121.6	0.7
ALL ITEMS	1000.00	100.4	1.3	102.1	1.7	104.6	2.4	105.6	1.0	106.9	1.2	107.8	0.9

**TABLE 5B. WEIGHTS AND PERCENTAGE CHANGE IN UTILITIES
AND OTHER SERVICES IN SURVEY PERIOD**

UTILITIES AND OTHER SERVICES	WEIGHTS		% CHANGE
	1998	1992	
RENT	6.20	35.28	-83.30
ELECTRICITY	49.90	22.19	124.90
TELEPHONE	50.30	27.84	81.00
WATER	14.60	4.85	201.00
HOME INSURANCE	10.60	2.89	266.80
MORTGAGE INTEREST	7.70	-	-
CABLE TELEVISION	30.30	24.33	24.50
MEDICINES AND HEALTH EXPENSES	31.60	15.75	100.63
PURCHASE OF MOTOR VEHICLE	85.40	50.89	67.81

TABLE 6. PERCENTAGE CHANGE IN GROUPS AND SUB GROUP INDICES FOR THE MONTHS OF JANUARY 2006 AND DECEMBER 2005 OVER THE BASE PERIOD

JANUARY 2001 = 100.00

GROUPS SUB-GROUPS	Weight	JANUARY 2006	December 2005	JANUARY 2001	% CHANGE DEC 05 TO JAN 06	% CHANGE JAN 01 TO JAN 06
ALL ITEMS	1000.00	106.73	107.54	100.00	-0.75	6.73
1. FOOD	328.80	110.43	110.19	100.00	0.21	10.43
1.01 Meat(fresh,chilled or frozen)	41.30	126.72	127.11	100.00	-0.31	26.72
1.02 Meat(preserved)	10.30	111.17	111.46	100.00	-0.26	11.17
1.03 Fish and Fish Preparations	37.80	105.07	105.32	100.00	-0.24	5.07
1.04 Dairy Products	43.20	116.83	116.68	100.00	0.12	16.83
1.05 Oils and Fats	17.40	91.97	92.06	100.00	-0.11	-8.03
1.06 Cereals	77.40	106.38	106.40	100.00	-0.02	6.38
1.07 Vegetables	29.60	125.48	123.64	100.00	1.49	25.48
1.08 Fruit and Fruit Preparations	7.50	93.17	93.14	100.00	0.02	-6.83
1.09 Sugar and Other Sweets	19.20	104.19	104.19	100.00	0.00	4.19
1.10 Miscellaneous	12.80	103.41	102.36	100.00	1.02	3.41
1.11 Meals Taken Away From Home	21.00	99.33	99.33	100.00	0.00	-0.67
1.12 Non-alcoholic Beverages	11.30	107.82	107.82	100.00	0.00	7.82
2. ALCOHOLIC BEVERAGE AND TOBACCO	9.50	99.67	99.67	100.00	0.00	-0.33
2.01 Alcoholic Drink	8.50	98.72	98.72	100.00	0.00	-1.28
2.02 Tobacco Products	1.00	107.74	107.74	100.00	0.00	7.74
3. CLOTHING AND FOOTWEAR	82.10	96.31	96.88	100.00	-0.59	-3.69
3.01 Clothing	54.80	91.21	91.27	100.00	-0.07	-8.79
3.02 Footwear	20.80	106.65	108.77	100.00	-1.95	6.65
3.03 Clothing Accessories	6.50	106.20	106.20	100.00	0.00	6.20
4. HOUSING AND UTILITIES	111.70	110.00	110.00	100.00	0.00	10.00
4.01 Rent	6.20	100.13	100.13	100.00	0.00	0.13
4.02 Utility Services (excl. electricity)	17.60	100.00	100.00	100.00	0.00	0.00
4.03 Repairs to House	69.60	116.03	116.03	100.00	0.00	16.03
4.04 Insurance Payments	10.60	100.00	100.00	100.00	0.00	0.00
4.05 Mortgage Interest Payments	7.70	100.00	100.00	100.00	0.00	0.00
5. FUEL AND LIGHT	58.60	131.09	140.05	100.00	-6.40	31.09
5.01 Fuel Supplies	8.70	118.42	120.65	100.00	-1.85	18.42
5.02 Electricity	49.90	133.29	143.44	100.00	-7.07	33.29
6. MEDICAL AND HEALTH EXPENSES	31.60	99.80	99.80	100.00	0.00	-0.20
6.01 Patent Medicines	4.02	107.51	107.51	100.00	0.00	7.51
6.02 Doctors' Fees	16.40	101.07	101.07	100.00	0.00	1.07
6.03 Hospital Expenses	10.40	93.67	93.67	100.00	0.00	-6.33
6.04 Miscellaneous	0.78	115.21	115.21	100.00	0.00	15.21
7. HOUSEHOLD AND FURNITURE EQUIPMENT	93.50	97.52	97.53	100.00	-0.01	-2.48
7.01 Furniture and Furnishing	21.50	101.28	101.28	100.00	0.00	1.28
7.02 Kitchen Equipment	13.70	102.94	102.94	100.00	0.00	2.94
7.03 Kitchen Supplies	3.50	111.70	111.75	100.00	-0.05	11.70
7.04 Recreational Equipment	17.60	82.63	82.63	100.00	0.00	-17.37
7.05 Laundry and Cleaning Equipment	4.00	89.83	89.83	100.00	0.00	-10.17
7.06 House Cleaning	7.70	99.74	99.79	100.00	-0.04	-0.26
7.07 Home Help Service	22.10	100.00	100.00	100.00	0.00	0.00
7.08 Miscellaneous	3.40	101.41	101.41	100.00	0.00	1.41
8. TRANSPORTATION AND COMMUNICATION	194.30	100.06	101.66	100.00	-1.57	0.06
8.01 Purchased Transportation	30.00	109.91	114.43	100.00	-3.95	9.91
8.02 Purchase of Motor Vehicle	85.40	98.89	98.89	100.00	0.00	-1.11
8.03 Operational Expenses	20.30	124.91	131.61	100.00	-5.09	24.91
8.04 Insurance, Taxes and Fees	58.60	88.11	88.78	100.00	-0.75	-11.89

TABLE 6. CONT'D

GROUPS SUB-GROUPS	Weight	JANUARY 2006	December 2005	JANUARY 2001	% CHANGE DEC 05 TO JAN 06	% CHANGE JAN 01 TO JAN 06
ALL ITEMS	1000.00	106.73	107.54	100.00	-0.75	6.73
9. EDUCATIONAL EXPENSES	29.00	112.54	112.38	100.00	0.14	12.54
10. PERSONAL CARE SERVICES	42.50	108.62	108.62	100.00	0.00	8.62
11. MISCELLANEOUS/OTHER	18.40	109.29	109.36	100.00	-0.07	9.29
11.01 Personal Care Supplies	8.90	113.43	113.74	100.00	-0.27	13.43
11.02 Other	9.50	105.40	105.40	100.00	0.00	5.40

TABLE 6A. GROUP AND SUB-GROUP INDICES JAN-DEC 2002 TO JAN-DEC 2006 AND PERCENTAGE CHANGE FROM BASE TO 2006

		January 2001 =100.00						
GROUPS SUB-GROUPS	WEIGHTS	2001 JAN BASE	2002 JAN-DEC AVG.	2003 JAN-DEC AVG.	2004 JAN-DEC AVG.	2005 JAN-DEC AVG.	2006 JAN-DEC AVG.	% Change Base - 2006
ALL ITEMS	1000.00	100.00	100.64	102.07	104.54	106.29	109.06	9.06
1. FOOD	328.80	100.00	102.46	102.85	105.72	108.34	112.77	12.77
1.01 Meat(fresh,chilled or frozen)	41.30	100.00	111.89	106.98	116.31	121.44	132.88	32.88
1.02 Meat(preserved)	10.30	100.00	99.07	100.13	102.06	107.57	115.65	15.65
1.03 Fish and Fish Preparations	37.80	100.00	99.86	99.81	100.18	103.33	106.73	6.73
1.04 Dairy Products	43.20	100.00	100.41	102.71	107.11	113.28	118.46	18.46
1.05 Oils and Fats	17.40	100.00	98.33	94.29	91.14	91.49	94.12	-5.88
1.06 Cereals	77.40	100.00	101.31	102.55	104.38	105.52	106.47	6.47
1.07 Vegetables	29.60	100.00	107.31	111.49	119.28	123.18	124.19	24.19
1.08 Fruit and Fruit Preparations	7.50	100.00	103.75	102.21	93.45	93.18	97.48	-2.52
1.09 Sugar and Other Sweets	19.20	100.00	102.52	103.44	104.37	104.28	105.66	5.66
1.10 Miscellaneous	12.80	100.00	98.87	100.36	101.85	101.83	109.42	9.42
1.11 Meals Taken Away From Home	21.00	100.00	100.00	100.65	99.63	98.81	109.58	9.58
1.12 Non-alcoholic Beverages	11.30	100.00	100.30	102.96	107.77	107.78	110.23	10.23
2. ALCOHOLIC BEVERAGE AND TOBACCO	9.50	100.00	101.58	98.62	97.70	98.85	106.42	6.42
2.01 Alcoholic Drink	8.50	100.00	101.76	97.86	96.78	97.93	105.29	5.29
2.02 Tobacco Products	1.00	100.00	100.07	105.10	105.49	106.64	116.02	16.02
3. CLOTHING AND FOOTWEAR	82.10	100.00	97.96	96.88	97.05	96.98	96.01	-3.99
3.01 Clothing	54.80	100.00	96.05	92.03	90.84	91.32	91.27	-8.73
3.02 Footwear	20.80	100.00	101.76	107.27	110.07	108.91	105.95	5.95
3.03 Clothing Accessories	6.50	100.00	101.90	104.48	107.77	106.58	104.16	4.16
4. HOUSING AND UTILITIES	111.70	100.00	100.00	103.71	108.56	110.19	111.51	11.51
4.01 Rent	6.20	100.00	100.00	100.02	100.09	100.13	100.13	0.13
4.02 Utility Services(excl. electricity)	17.60	100.00	100.00	100.00	100.00	100.00	100.00	0.00
4.03 Repairs to House	69.60	100.00	101.09	106.44	113.74	116.34	118.47	18.47
4.04 Insurance Payments	10.60	100.00	100.00	100.00	100.00	100.00	100.00	0.00
4.05 Mortgage Interest Payments	7.70	100.00	100.00	100.00	100.00	100.00	100.00	0.00
5. FUEL AND LIGHT	58.60	100.00	100.63	112.09	120.59	136.01	145.36	45.36
5.01 Fuel Supplies	8.70	100.00	103.99	107.06	108.10	113.57	119.10	19.10
5.02 Electricity	49.90	100.00	100.04	112.96	122.76	139.92	149.94	49.94
6. MEDICAL AND HEALTH EXPENSES	31.60	100.00	100.26	99.32	99.57	99.66	104.81	4.81
6.01 Patent Medicines	4.02	100.00	100.76	103.46	107.01	106.42	115.49	15.49
6.02 Doctors' Fees	16.40	100.00	100.00	100.29	100.75	101.07	108.59	8.59
6.03 Hospital Expenses	10.40	100.00	100.00	94.99	93.67	93.67	93.67	-6.33
6.04 Miscellaneous	0.78	100.00	106.48	115.21	115.21	115.21	118.88	18.88
7. HOUSEHOLD AND FURNITURE EQUIPMENT	93.50	100.00	100.11	99.75	98.37	97.39	97.48	-2.52
7.01 Furniture and Furnishing	21.50	100.00	102.19	104.56	104.15	101.71	101.96	1.96
7.02 Kitchen Equipment	13.70	100.00	99.20	99.57	100.27	102.77	104.64	4.64
7.03 Kitchen Supplies	3.50	100.00	98.69	102.64	107.33	110.72	112.62	12.62
7.04 Recreational Equipment	17.60	100.00	99.22	94.51	85.94	81.49	79.20	-20.80
7.05 Laundry and Cleaning Equipment	4.00	100.00	96.38	95.43	95.93	90.67	90.28	-9.72
7.06 House Cleaning	7.70	100.00	100.90	98.93	99.64	99.95	101.94	1.94
7.07 Home Help Service	22.10	100.00	100.00	100.00	100.00	100.00	100.00	0.00
7.08 Miscellaneous	3.40	100.00	100.03	99.84	100.31	101.30	99.81	-0.19
8. TRANSPORTATION AND COMMUNICATION	194.30	100.00	98.09	98.78	101.19	100.14	100.74	0.74
8.01 Purchased Transportation	30.00	100.00	93.77	99.32	108.31	108.84	106.70	6.70
8.02 Purchase of Motor Vehicle	85.40	100.00	100.00	99.60	98.89	98.89	98.89	-1.11
8.03 Operational Expenses	20.30	100.00	101.77	108.70	114.54	123.96	131.78	31.78
8.04 Insurance, Taxes and Fees	58.60	100.00	96.16	93.88	96.29	89.26	89.64	-10.36

TABLE 6A cont'd

GROUPS SUB-GROUPS	WEIGHTS	January 2001 =100.00						% Change Base - 2006
		2001 JAN BASE	2002 JAN-DEC AVG.	2003 JAN-DEC AVG.	2004 JAN-DEC AVG.	2005 JAN-DEC AVG.	2006 JAN-DEC AVG.	
ALL ITEMS	1000.00	100.00	100.64	102.07	104.54	106.29	109.06	9.06
9. EDUCATIONAL EXPENSES	29.00	100.00	104.10	108.45	110.74	112.05	112.92	12.92
10. PERSONAL CARE SERVICES	42.50	100.00	101.49	104.52	105.66	106.90	113.62	13.62
11. MISCELLANEOUS/OTHER	18.40	100.00	102.13	104.74	107.49	108.02	109.20	9.20
11.01 Personal Care Supplies	8.90	100.00	104.05	108.68	109.91	110.87	113.06	13.06
11.02 Other	9.50	100.00	100.58	101.05	105.22	105.35	105.59	5.59

TABLE 7. GROUPS AND SUB-GROUPS INDICES
Feb. 1990 - Feb. 2000

GROUPS Sub-groups	WEIGHTS	February 1994= 100.0										
		Feb 1990	Feb 1991	Feb 1992	Feb 1993	Feb 1994	Feb 1995	Feb. 1996	Feb. 1997	Feb. 1998	Feb. 1999	Feb. 2000
ALL ITEMS	1000.00	86.9	90.8	95.6	98.9	100.0	100.2	101.2	103.6	105.10	107.2	107.0
FOOD	401.81	86.2	88.5	94.3	100.5	100.0	98.0	98.0	101.6	102.4	105.2	102.4
Meat(fresh,chill. or frozen)	36.37	89.4	100.1	98.1	97.2	100.0	108.2	97.7	112.2	110.4	116.0	105.3
Meat(preserved)	11.80	100.0	98.4	99.6	103.0	102.4	104.4	107.6
Fish and Fish Preparations	39.98	66.2	77.9	86.2	92.9	100.0	100.6	104.8	103.1	102.9	103.0	103.3
Dairy Products	36.57	100.3	98.6	99.8	100.5	100.0	100.0	114.4	118.1	117.4	117.2	113.6
Oils and Fats	8.97	96.1	99.3	98.8	100.0	100.0	100.7	101.7	102.4	102.4	102.7	104.0
Cereals	70.49	75.8	82.6	88.4	100.2	100.0	101.5	106.5	109.6	109.7	111.8	113.5
Vegetables and Fruits	64.60	88.5	80.8	93.9	106.7	100.0	114.2	92.7	94.7	99.7	95.8	88.5
Fruit and Fruit Preparations	58.39	100.0	98.3	113.0	106.0	105.6	119.1	111.8
Sugar and Other Sweets	15.24	98.3	97.9	95.6	98.3	100.0	100.1	90.5	102.1	104.4	103.8	102.8
Miscellaneous Items	29.67	102.9	107.2	115.9	106.4	100.0	101.8	101.6	105.9	104.9	109.2	112.8
Meals Taken Away From Home	20.78	82.3	89.3	92.7	100.0	100.0	98.4	103.1	103.1	103.1	107.0	108.6
Non-alcoholic Beverages	8.95	89.8	91.4	94.5	93.6	100.0	96.3	99.0	102.1	113.4	122.3	125.0
ALCOHOLIC BEV. & TOBACCO	16.16	86.6	89.0	95.4	98.5	100.0	100.0	107.6	111.7	114.7	113.8	113.8
Alcoholic Beverages	12.11	88.5	91.3	98.0	100.5	100.0	99.2	108.6	111.8	115.6	114.6	114.6
Tobacco Products	4.05	79.5	80.3	85.6	91.0	100.0	102.3	104.8	111.5	112.1	111.2	111.3
HOUSING & UTILITIES	133.71	90.5	97.1	98.2	99.7	100.0	100.3	99.6	100.5	102.4	102.6	107.3
Rent (excluding electricity)	35.28	91.1	94.7	100.0	100.0	100.0	100.0	101.0	102.5	103.6	105.5	115.9
Fuel Supplies	15.16	88.7	112.8	100.7	101.1	100.0	103.3	100.0	100.0	105.7	105.7	105.7
Utility Services	55.31	84.3	88.4	91.2	97.7	100.0	100.3	100.6	101.8	103.6	102.7	106.7
Repairs to House	17.61	100.0	99.4	93.6	94.0	95.6	95.6	97.9
Insurance Payments	2.89	100.0	100.0	100.0	100.0	100.0	100.0	100.0
Home Help Service	5.89	100.0	100.0	100.0	100.0	100.0	100.0	100.0
Laundry and Dry Cleaning Serv.	1.57	100.0	94.5	90.8	90.8	90.8	92.7	92.7
FURNITURE & HOUSEHOLD EQUIP.	57.79	86.3	94.1	98.5	96.6	100.0	97.4	95.4	96.0	97.4	99.1	99.3
Furniture & Furnishings	10.97	73.0	86.2	95.9	92.1	100.0	100.6	101.6	100.9	101.3	107.9	108.3
Kitchen Equipment	11.13	96.7	100.3	100.5	100.0	100.0	99.6	91.2	91.4	91.3	91.8	94.1
Recreational Equipment	11.69	100.0	91.9	83.6	83.1	83.7	83.7	81.5
Laundry and Cleaning Equip.	3.58	100.0	102.7	92.6	91.9	93.6	97.8	99.0
House Cleaning	19.27	100.0	96.2	99.7	102.1	104.5	105.0	107.3
Repairs to Equipment	1.15	100.0	100.0	100.0	100.0	100.0	100.0	100.0
TRANSPORTATION	162.02	88.0	96.5	96.5	100.0	100.0	102.2	105.7	108.1	104.6	106.1	105.8
Purchased Transportation	50.34	100.0	103.4	105.3	112.5	99.7	105.1	101.9
Purchase of Motor Vehicles	50.89	100.0	100.3	111.1	111.4	111.4	111.4	111.4
Operational Expenses	46.29	100.0	98.8	99.2	99.5	101.3	100.8	102.0
Insurance and Fees	14.50	100.0	115.1	108.6	108.6	108.6	108.6	111.5
CLOTHING & FOOTWEAR	68.35	73.0	77.0	93.9	90.8	100.0	102.1	103.8	103.6	104.5	104.4	107.3
Clothing	49.69	68.8	73.9	93.5	91.7	100.0	103.7	102.7	103.4	103.9	103.3	107.3
Footwear	15.77	85.8	86.4	95.0	87.9	100.0	97.8	106.7	103.8	106.2	107.5	107.3
Clothing Accessories	2.89	100.0	98.9	106.4	106.4	106.4	107.1	107.2
MISCELLANEOUS EXPENSES	160.16	92.0	93.0	95.3	97.7	100.0	104.1	106.6	108.3	116.7	120.5	121.5
Personal Care & Supplies	38.21	101.5	100.7	100.6	100.5	100.0	100.2	102.0	108.6	107.3	109.0	107.7
Medicines and Health Exp.	15.75	100.0	104.2	106.8	109.5	118.0	122.7	124.1
Personal Life Insurance	4.80	100.0	100.0	100.0	100.0	100.0	102.5	102.5
Educational Expenses	49.59	100.0	111.0	113.5	113.4	139.4	142.6	145.1
Sporting & Other Recreation	30.06	100.0	101.6	101.6	101.6	101.6	101.6	101.6
Other Miscellaneous	21.75	78.4	87.1	91.1	95.7	100.0	99.3	107.1	106.6	105.1	118.5	121.8

**TABLE 8. PERCENTAGE CHANGE IN GROUP AND SUB-GROUP INDICES
2001 BASE TO JANUARY - DECEMBER 2006**

January 2001 = 100.0

SUB-GROUPS	WEIGHTS	JAN. 2001	2003 Avg. Jan.-Dec.	2004 Avg. Jan.-Dec.	2005 Avg. Jan.-Dec.	2006 Avg. Jan.-Dec.	% Change Jan.'01 Base- Jan-Dec'06	% Change Average 2004-2005	% Change Average 2005-2006
ALL ITEMS	1000.00	100.0	102.07	104.54	106.29	109.06	9.06	1.67	2.61
1. FOOD	328.80	100.0	102.85	105.72	108.34	112.77	12.77	2.48	4.09
1.01 Meat(fresh,chilled or frozen)	41.30	100.0	106.98	116.31	121.44	132.88	32.88	4.41	9.42
1.02 Meat(preserved)	10.30	100.0	100.13	102.06	107.57	115.65	15.65	5.40	7.51
1.03 Fish and Fish Preparations	37.80	100.0	99.81	100.18	103.33	106.73	6.73	3.14	3.30
1.04 Dairy Products	43.20	100.0	102.71	107.11	113.28	118.46	18.46	5.76	4.57
1.05 Oils and Fats	17.40	100.0	94.29	91.14	91.49	94.12	-5.88	0.39	2.88
1.06 Cereals	77.40	100.0	102.55	104.38	105.52	106.47	6.47	1.10	0.90
1.07 Vegetables	29.60	100.0	111.49	119.28	123.18	124.19	24.19	3.27	0.83
1.08 Fruit and Fruit Preparations	7.50	100.0	102.21	93.45	93.18	97.48	-2.52	-0.29	4.61
1.09 Sugar and Other Sweets	19.20	100.0	103.44	104.37	104.28	105.66	5.66	-0.09	1.32
1.10 Miscellaneous	12.80	100.0	100.36	101.85	101.83	109.42	9.42	-0.02	7.45
1.11 Meals Taken Away From Home	21.00	100.0	100.65	99.63	98.81	109.58	9.58	-0.82	10.89
1.12 Non-alcoholic Beverages	11.30	100.0	102.96	107.77	107.78	110.23	10.23	0.01	2.27
2. ALCOHOLIC BEVERAGES AND TOBACCO	9.50	100.0	98.62	97.70	98.85	106.42	6.42	1.18	7.66
2.01 Alcoholic Drink	8.50	100.0	97.86	96.78	97.93	105.29	5.29	1.19	7.51
2.02 Tobacco Products	1.00	100.0	105.10	105.49	106.64	116.02	16.02	1.08	8.80
3. CLOTHING AND FOOTWEAR	82.10	100.0	96.88	97.05	96.98	96.01	-3.99	-0.07	-1.01
3.01 Clothing	54.80	100.0	92.03	90.84	91.32	91.27	-8.73	0.52	-0.06
3.02 Footwear	20.80	100.0	107.27	110.07	108.91	105.95	5.95	-1.05	-2.72
3.03 Clothing Accessories	6.50	100.0	104.48	107.77	106.58	104.16	4.16	-1.10	-2.28
4. HOUSING AND UTILITIES	111.70	100.0	103.71	108.56	110.19	111.51	11.51	1.50	1.20
4.01 Rent	6.20	100.0	100.02	100.09	100.13	100.13	0.13	0.04	0.00
4.02 Utility Services(excl. electricity)	17.60	100.0	100.00	100.00	100.00	100.00	0.00	0.00	0.00
4.03 Repairs to House	69.60	100.0	106.44	113.74	116.34	118.47	18.47	2.29	1.82
4.04 Insurance Payments	10.60	100.0	100.00	100.00	100.00	100.00	0.00	0.00	0.00
4.05 Mortgage Interest Payments	7.70	100.0	100.00	100.00	100.00	100.00	0.00	0.00	0.00
5. FUEL AND LIGHT	58.60	100.0	112.09	120.59	136.01	145.36	45.36	12.79	6.87
5.01 Fuel Supplies	8.70	100.0	107.06	108.10	113.57	119.10	19.10	5.06	4.87
5.02 Electricity	49.90	100.0	112.96	122.76	139.92	149.94	49.94	13.98	7.16
6. MEDICAL AND HEALTH EXPENSES	31.60	100.0	99.32	99.57	99.66	104.81	4.81	0.09	5.17
6.01 Patent Medicines	4.02	100.0	103.46	107.01	106.42	115.49	15.49	-0.55	8.53
6.02 Doctors' Fees	16.40	100.0	100.29	100.75	101.07	108.59	8.59	0.32	7.44
6.03 Hospital Expenses	10.40	100.0	94.99	93.67	93.67	93.67	-6.33	0.00	0.00
6.04 Miscellaneous	0.78	100.0	115.21	115.21	115.21	118.88	18.88	0.00	3.18
7. HOUSEHOLD AND FURNITURE EQUIPMENT	93.50	100.0	99.75	98.37	97.39	97.48	-2.52	-1.00	0.09
7.01 Furniture and Furnishing	21.50	100.0	104.56	104.15	101.71	101.96	1.96	-2.34	0.25
7.02 Kitchen Equipment	13.70	100.0	99.57	100.27	102.77	104.64	4.64	2.50	1.82
7.03 Kitchen Supplies	3.50	100.0	102.64	107.33	110.72	112.62	12.62	3.16	1.71
7.04 Recreational Equipment	17.60	100.0	94.51	85.94	81.49	79.20	-20.80	-5.17	-2.81
7.05 Laundry and Cleaning Equipment	4.00	100.0	95.43	95.93	90.67	90.28	-9.72	-5.48	-0.43
7.06 House Cleaning	7.70	100.0	98.93	99.64	99.95	101.94	1.94	0.32	1.99
7.07 Home Help Service	22.10	100.0	100.00	100.00	100.00	100.00	0.00	0.00	0.00
7.08 Miscellaneous	3.40	100.0	99.84	100.31	101.30	99.81	-0.19	0.99	-1.47
8. TRANSPORTATION AND COMMUNICATION	194.30	100.0	98.78	101.19	100.14	100.74	0.74	-1.04	0.60
8.01 Purchased Transportation	30.00	100.0	99.32	108.31	108.84	106.70	6.70	0.49	-1.97
8.02 Purchase of Motor Vehicle	85.40	100.0	99.60	98.89	98.89	98.89	-1.11	0.00	0.00
8.03 Operational Expenses	20.30	100.0	108.70	114.54	123.96	131.78	31.78	8.22	6.31
8.04 Insurance, Taxes and Fees	58.60	100.0	93.88	96.29	89.26	89.64	-10.36	-7.30	0.42
9. EDUCATIONAL EXPENSES	29.00	100.0	108.45	110.74	112.05	112.92	12.92	1.18	0.78
10. PERSONAL CARE SERVICES	42.50	100.0	104.52	105.66	106.90	113.62	13.62	1.17	6.29
11 MISCELLANEOUS/OTHER	18.40	100.0	104.74	107.49	108.02	109.20	9.20	0.49	1.10
11.01 Personal Care Supplies	8.90	100.0	108.68	109.91	110.87	113.06	13.06	0.87	1.97
11.02 Other	9.50	100.0	101.05	105.22	105.35	105.59	5.59	0.12	0.23

**TABLE 8A. PERCENTAGE CHANGE IN GROUP AND SUB-GROUP INDICES 1994
BASE TO JANUARY - DECEMBER 2000**

February 1994 = 100.0

SUB-GROUPS	WEIGHTS	2000 AVG. Jan-Dec	% Change 1994 Base to 2000
ALL ITEMS	1000.00	107.8	7.8
FOOD	401.81	103.1	3.1
Meat (fresh, chilled or frozen)	36.37	102.7	2.7
Meat (preserved)	11.80	105.9	5.8
Fish and Fish Preparations	39.98	102.4	2.4
Dairy Products	36.57	114.7	14.7
Oils and Fats	8.97	104.6	4.6
Cereals	70.49	113.2	13.2
Vegetables and Friuts	64.60	90.5	-9.5
Friut and Fruit Preparations	58.39	115.8	15.8
Sugar and Other Sweets	15.24	105.2	5.2
Miscellaneous Items	29.67	112.6	12.6
Meals Taken Away From Home	20.78	110.3	10.3
Non-alcoholic Beverages	8.95	125.0	25.0
ALCOHOLIC BEVERAGES AND TOBACCO	16.16	113.9	13.9
Alcoholic Beverages	12.11	114.7	14.7
Tobacco Products	4.05	111.6	11.6
HOUSING AND UTILITIES	133.71	108.9	8.9
Rent (excluding electrtricity)	35.28	118.7	18.7
Fuel Supplies	15.16	105.7	5.7
Utility Services	55.31	108.8	8.8
Repairs to House	17.61	98.0	-2.0
Insurance Payments	2.89	100.0	0.0
Home Help Service	5.89	100.0	0.0
Laundry and Dry Cleaning Service	1.57	94.2	-5.8
FURNITURE AND HOUSEHOLD EQUIPMENT	57.79	100.5	0.5
Furniture and Furnishings	10.97	111.8	11.8
Kitchen Equipment	11.13	95.0	-5.0
Recreational Equipment	11.69	81.7	-18.3
Laundry and Cleaning Equipment	3.58	101.1	1.1
House Cleaning	19.27	107.8	7.8
Repairs to Equipment	1.15	100.0	0.0
TRANSPORTATION	162.02	106.8	6.8
Purchased Transportation	50.34	105.5	5.5
Purchase of Motor Vehicle	50.89	111.4	11.4
Operational Expenses	46.29	101.9	1.9
Insurance and Fees	14.50	111.2	11.2
CLOTHING AND FOOTWEAR	68.35	107.9	7.8
Clothing	49.69	107.9	7.9
Footwear	15.77	107.6	7.6
Clothing Accessories	2.89	108.4	8.3
MISCELLANEOUS EXPENSES	160.16	121.6	21.6
Personal Care and Supplies	38.21	107.6	7.6
Medicines and Health Expenses	15.75	124.8	24.8
Personal Life Insurance	4.80	102.5	2.5
Educational Expenses	49.59	145.3	45.3
Sporting and Other Recreation	30.06	101.6	1.6
Other Miscellaneous	21.75	121.6	21.6

**TABLE 9. PRICE MOVEMENTS OF SELECTED ITEMS IN BASE YEARS
JULY 1984, FEBRUARY 1994 AND JANUARY 2001**

ITEMS	UNIT	BASE PRICE			% CHANGE JULY 84 TO FEB 94	% CHANGE FEB 1994 TO JAN 01
		JULY 1984	FEB 1994	JAN 2001		
FOOD						
Beef (local)	kg	8.25	15.40	15.40	86.67	0.00
imported	kg	16.17	12.19	15.76	-24.61	29.29
Chicken (backs & necks)	kg	2.83	3.66	4.37	29.33	19.40
wings	kg	5.64	6.45	7.95	14.36	23.26
whole legs	kg	6.36	6.26	6.05	-1.57	-3.35
Fish (pot)	kg	8.25	14.30	15.40	73.33	7.69
tuna	kg	8.25	15.40	15.40	86.67	0.00
Salted fish	kg	7.61	16.22	18.06	113.14	11.34
Evaporated milk	410gms	1.20	1.52	2.09	26.67	37.50
Powdered milk	1800gms	14.46	22.41	24.96	54.98	11.38
Butter	250gms	5.33	3.28	4.20	-38.46	28.05
Cheese	kg	9.70	14.80	17.79	52.58	20.20
Eggs	dozen	5.73	6.37	6.87	11.17	7.85
Cooking Oil	1 litre	4.84	8.11	7.65	67.56	-5.67
Sandwich loaf	sliced	2.50	2.88	2.92	15.20	1.39
Flour (loose)	kg	1.75	1.85	2.13	5.71	15.14
Rice (loose)	kg	1.98	2.07	2.25	4.55	8.70
Tomatoes	kg	6.60	4.40	11.37	-33.33	158.41
Carrots	kg	3.30	6.36	8.46	92.73	33.02
Cabbage	kg	5.50	4.40	4.43	-20.00	0.68
Onions	kg	3.56	3.96	3.90	11.24	-1.52
Beans	kg	4.35	7.16	6.73	64.60	-6.01
Lentils	kg	3.52	4.57	4.55	29.83	-0.44
Oranges	each	0.54	0.33	0.64	-38.89	93.94
Grapefruit	each	0.25	0.20	0.39	-20.00	95.00
Melons	kg	1.28	3.30	2.86	157.81	-13.33
White sugar	kg	1.45	2.12	2.30	46.21	8.49
Brown sugar	kg	1.58	1.90	2.10	20.25	10.53
Salt	kg	0.92	1.26	1.46	36.96	15.87
Tomato Ketchup	375 ml	3.89	3.93	5.25	1.03	33.59
Coffee (beans)	kg	12.05	13.42	13.20	11.37	-1.64
instant	50 gms	9.69	6.06	8.48	-37.46	39.93
Coca-cola	296 ml	0.80	1.20	1.58	50.00	31.67
Ham sandwich	each	2.25	3.88	4.67	72.44	20.36
Roti	each	4.50	6.00	7.43	33.33	23.83

TABLE 9. CONT'D

ITEMS	UNIT	BASE PRICE			% CHANGE JULY 84 TO FEB 94	% CHANGE FEB 1994 TO JAN 01
		JULY 1984	FEB 1994	JAN 2001		
ALCOHOLIC BEVERAGES & TOBACCO						
Rum	75 cl	8.40	9.67	15.53	15.12	60.60
Whisky	75 cl	18.25	40.38	36.67	121.26	-9.19
Beer	284 ml	2.33	2.86	3.14	22.75	9.79
Cigarettes (local)	pkt./20	1.65	2.75	3.06	66.67	11.27
(imported)	pkt./20	2.93	4.42	4.80	50.85	8.60
FUEL						
Kerosene	gal.	4.00	3.62	4.35	-9.50	20.17
Gas	9.1 kg	24.51	27.70	29.30	13.02	5.78
UTILITIES						
Electricity	month	34.21	43.14	78.00	26.10	80.81
Telephone	month	40.44	40.44	42.76	0.00	5.74
Water	month	9.17	26.89	47.83	193.24	77.87
HOUSEHOLD EQUIPMENT						
Refrigerator	15 cu.ft.	3,078.25	3,258.44	2,620.02	5.85	-19.59
Radio-recorder		485.00	909.18	483.75	87.46	-46.79
Black & white t.v.	17"	580.00	606.67	---	4.60	---
Colour t.v.	19"	1,770.25	1,618.26	1,330.35	-8.59	-17.79
CLOTHING						
Women's dress	casual	49.98	118.53	97.41	137.15	-17.82
	formal	68.74	193.44	283.00	181.41	46.30
Girl's dress		39.98	96.78	149.00	142.07	53.96
Boy's shirt		36.45	42.53	40.58	16.68	-4.58
	trousers	32.48	42.55	71.35	31.00	67.69
FOOTWEAR						
Women's shoes	casual	39.98	59.72	68.37	49.37	14.48
	formal	77.50	72.43	82.73	-6.54	14.22
Men's shoes	casual	57.50	114.86	84.03	99.76	-26.84
	formal	75.00	146.51	134.60	95.35	-8.13
MISCELLANEOUS						
Toilet soap	145 gm	1.54	1.26	2.00	-18.18	58.73
Tooth paste	76 gm	3.93	6.97	4.81	77.35	-30.99
Deodorant	110 gm	9.40	13.14	11.43	39.79	-13.01
Doctor's fees	per visit	20.00	45.00	75.00	125.00	66.67
Television fees	month	30.00	50.00	50.00	66.67	0.00
School fees(pre-school)	month	20.00	31.67	75.00	58.35	136.82
Petrol	gal.	6.00	6.50	6.70	8.33	3.08
Vehicle license	year	229.60	330.00	440.00	43.73	33.33

TABLE 10.

**PRICE MOVEMENTS OF SELECTED ITEMS
FEBRUARY 1993-FEBRUARY 2000**

ITEMS	UNIT	1984 BASE PRICE	FEBRUARY 1994=100								% CHANGE 84 BASE TO FEB. 94
			FEB. 1993	FEB. 1994	FEB. 1995	FEB. 1996	FEB. 1997	FEB. 1998	FEB. 1999	FEB. 2000	
FOOD											
Beef (local)	kg	8.25	15.03	15.40	15.40	13.20	13.93	13.92	15.40	15.40	86.67
imported	kg	16.17	11.92	12.19	12.19	11.48	12.13	13.05	12.16	14.28	-24.61
Chicken (backs & necks)	kg	2.83	3.82	3.66	3.78	3.41	4.31	4.19	4.45	4.24	29.33
wings	kg	5.64	6.12	6.45	6.53	6.18	7.67	7.52	8.94	8.01	14.36
whole legs	kg	6.36	5.65	6.26	6.42	5.82	7.15	6.66	6.82	5.51	-1.57
Fish (pot)	kg	8.25	14.67	14.30	14.30	15.40	15.40	15.40	15.40	15.40	73.33
tuna	kg	8.25	13.20	15.40	15.40	15.40	15.40	15.40	15.40	15.40	86.67
Salted fish	kg	7.61	16.93	16.22	16.51	18.18	15.40	16.81	17.20	17.36	113.14
Evaporated milk	410gms	1.20	1.52	1.52	1.52	1.89	2.01	1.96	1.92	1.94	26.67
Powdered milk	1800gms	14.46	19.94	22.41	22.26	25.14	25.12	25.79	25.80	23.17	54.98
Butter	250gms	5.33	5.01	3.28	3.17	4.09	4.13	3.99	4.12	4.12	-38.46
Cheese	kg	9.70	17.90	14.80	14.97	16.66	16.52	16.51	16.66	15.51	52.58
Eggs	dozen	5.73	5.50	6.37	6.04	5.94	6.44	6.29	6.29	6.41	11.17
Cooking Oil	1 litre	4.84	5.09	8.11	8.11	8.11	8.11	8.11	8.11	8.14	67.56
Sandwich loaf	sliced	2.50	2.88	2.88	2.75	2.92	2.98	3.00	3.17	3.17	15.20
Flour	kg	1.75	1.90	1.85	1.98	2.09	2.09	2.04	1.98	2.09	5.71
Rice	kg	1.98	2.04	2.07	2.05	1.88	2.03	2.04	1.97	2.03	4.55
Tomatoes	kg	6.60	6.60	4.40	11.00	7.43	9.23	8.80	6.60	6.86	-33.33
Carrots	kg	3.30	11.00	6.36	6.60	7.60	6.22	8.50	9.61	8.73	92.73
Cabbage	kg	5.50	4.40	4.40	6.60	3.58	6.33	7.33	5.87	6.60	-20.00
Onions	kg	3.56	3.90	3.96	3.67	3.69	3.72	4.38	3.80	3.50	11.24
Beans	kg	4.35	6.82	7.16	7.09	6.74	7.43	7.57	7.48	7.17	64.60
Lentils	kg	3.52	5.12	4.57	3.70	3.59	4.09	3.29	3.03	3.03	29.83
Oranges	each	0.54	0.33	0.33	0.50	1.00	0.57	0.65	0.66	0.67	-38.89
Grapefruit	each	0.25	0.14	0.20	0.20	0.20	0.17	0.17	0.33	0.20	-20.00
Melons	kg	1.28	1.31	3.30	1.98	2.20	2.08	2.46	2.08	1.03	157.81
White sugar	kg	1.45	2.06	2.12	2.13	1.85	2.09	2.09	2.09	2.10	46.21
Brown sugar	kg	1.58	1.87	1.90	1.90	1.66	1.91	1.91	1.91	1.93	20.25
Salt	kg	0.92	1.20	1.26	1.35	1.41	1.27	1.11	1.13	0.98	36.96
Tomato Ketchup	375 ml	3.89	4.21	3.93	4.87	4.83	5.11	4.82	4.83	5.30	1.03
Coffee (beans)	kg	12.05	13.96	13.42	13.42	13.42	13.74	14.37	13.75	13.75	11.37
instant	50 gms	9.69	6.06	6.06	7.67	8.47	8.48	6.32	8.13	8.70	-37.46
Coca-cola	296 ml	0.80	1.00	1.20	1.20	1.20	1.25	1.50	1.63	1.75	50.00
Ham sandwich	each	2.25	3.88	3.88	4.00	4.25	4.25	4.25	4.42	4.58	72.44
Roti	each	4.50	6.00	6.00	6.50	6.75	8.75	6.75	7.00	7.00	33.33

TABLE 10. CONT'D

											FEBRUARY 1994=100
ITEMS	UNIT	1984 BASE PRICE	FEB. 1993	FEB. 1994	FEB. 1995	FEB. 1996	FEB. 1997	FEB. 1998	FEB. 1999	FEB. 2000	% CHANGE 84 BASE TO FEB. 94
ALCOHOLIC BEV. & TOBACCO											
Rum	75 cl	8.40	9.57	9.67	10.18	10.34	12.31	13.64	13.81	13.91	15.12
Whisky	75 cl	18.25	41.14	40.38	39.79	41.17	41.17	41.57	40.71	39.54	121.26
Beer	284 ml	2.33	2.86	2.86	2.72	3.12	3.27	3.22	3.18	3.22	22.75
Cigarettes(local)	pkt./20	1.65	2.51	2.75	2.75	2.75	3.03	3.03	3.03	3.03	66.67
(imported)	pkt./20	2.93	4.01	4.42	4.60	4.80	4.98	4.98	4.90	4.92	50.85
FUEL											
Kerosene	gal.	4.00	3.94	3.62	3.62	3.62	3.62	4.35	4.35	4.35	-9.50
Gas	9.1 kg	24.51	27.70	27.70	27.70	27.70	27.70	29.30	29.30	29.30	13.02
UTILITIES											
Electricity	month	34.21	41.28	43.14	93.49	94.29	95.03	99.17	97.15	106.40	26.10
Telephone	month	40.44	40.44	40.44	58.64	58.64	58.64	58.64	58.64	58.64	0.00
Water	month	9.17	25.00	26.89	26.89	26.89	26.89	45.80	45.80	45.80	193.24
HOUSEHOLD EQUIPMENT											
Refrigerator	15 cu.ft.	3,078.25	3,258.44	3,258.44	2,509.88	2,356.98	2,355.38	2,355.38	2,355.38	2,355.40	5.85
Radio-recorder		485.00	909.20	909.18	803.93	745.93	795.00	795.00	795.00	795.00	87.46
Black & white t.v.	17"	580.00	606.67	606.67	326.43	311.24	311.24	357.59	357.59	337.00	4.60
Colour t.v.	19"	1,770.25	1,618.26	1,618.26	1,821.93	1,487.00	1,433.79	1,417.93	1,417.93	1,351.39	-8.59
CLOTHING											
Women's dress	casual	49.98	114.75	118.53	85.00	97.75	97.75	97.75	97.75	97.75	137.15
	formal	68.74	196.41	193.44	245.00	265.00	265.00	280.00	265.00	280.00	181.41
Girl's dress		39.98	89.81	96.78	80.93	65.98	93.04	89.92	89.92	124.58	142.07
Boy's shirt		36.45	46.65	42.53	42.66	45.89	35.54	35.54	35.54	42.56	16.68
trousers		32.48	39.98	42.55	40.75	40.88	40.88	40.88	40.88	44.30	31.00
FOOTWEAR											
Women's shoes	casual	39.98	50.13	59.72	57.56	80.19	73.31	76.83	71.18	70.00	49.37
	formal	77.50	66.95	72.43	72.68	82.23	77.07	83.78	82.71	75.04	-6.54
Men's shoes	casual	57.50	87.04	114.86	79.57	79.57	79.57	79.57	79.57	82.40	99.76
	formal	75.00	131.70	146.51	127.68	130.85	130.39	130.39	130.39	132.93	95.35
MISCELLANEOUS											
Toilet soap	145 gm	1.54	1.31	1.26	1.47	1.63	1.94	1.96	1.95	1.99	-18.18
Tooth paste	76 gm	3.93	6.75	6.97	4.85	5.05	6.62	6.13	6.05	6.05	77.35
Deodorant	110 gm	9.40	13.21	13.14	12.92	13.88	13.76	13.76	13.76	13.97	39.79
Doctor's fees	per visit	20.00	40.00	45.00	55.00	55.00	60.00	60.00	60.00	60.00	125.00
Television fees	month	30.00	50.00	50.00	50.00	50.00	50.00	50.00	50.00	50.00	66.67
School fees(pre-school)	month	20.00	25.00	31.67	40.00	40.00	40.00	83.33	83.33	83.33	58.35
Petrol	gal.	6.00	6.50	6.50	6.50	6.50	6.50	6.70	6.70	6.70	8.33
Vehicle license	year	229.60	330.00	330.00	440.00	440.00	440.00	440.00	440.00	440.00	43.73

TABLE 11.

**PRICE MOVEMENTS OF SELECTED ITEMS JANUARY BASE PRICE
COMPARED WITH DECEMBER 2004, 2005 AND 2006 PRICES**

ITEMS DESCRIPTION AND SPECIFICATION	UNIT	BASE PRICE JAN 2001	JANUARY 2001 = 100.0					
			DEC 2006	DEC 2005	DEC 2004	% CHANGE DEC 05 - DEC 06	% CHANGE DEC 04 - DEC 05	% CHANGE BASE PRICE JAN 01 - DEC 06
ALL ITEMS								
1 FOOD								
MEAT								
1.01 MEAT (fresh, chilled or frozen)								
Beef								
(a) local	kg	15.40	13.20	14.67	13.75	(10.02)	6.69	(14.29)
(b) imported	kg	15.76	26.93	20.79	18.48	29.51	12.50	70.84
Chicken								
(a) backs and necks	kg	4.37	5.91	5.12	4.75	15.43	7.79	35.24
(b) wings	kg	7.95	11.33	9.70	9.01	16.80	7.66	42.52
(c) whole legs	kg	6.05	7.97	8.28	7.71	(3.74)	7.39	31.74
(d) thighs	kg	5.67	8.04	7.92	7.35	1.52	7.76	41.80
(e) drumsticks	kg	5.57	8.13	7.44	6.94	9.27	7.20	45.96
Pork								
(a) local	kg	13.39	13.75	13.38	13.39	2.77	(0.07)	2.69
(b) imported	kg	22.06	28.59	21.72	23.74	31.63	(8.51)	29.60
Mutton	kg	26.01	34.71	31.63	31.85	9.72	(0.69)	33.43
Turkey drumsticks	kg	5.41	8.52	8.00	7.47	6.50	7.10	57.49
1.02 MEAT(Preserved)								
Corned Beef	340.5g	4.82	5.54	4.96	4.56	11.61	8.77	14.85
Salted Pork	kg	10.50	12.52	11.73	10.57	6.72	10.97	19.22
Sausages	700g	20.42	25.64	24.53	21.14	4.51	16.04	25.55
Sausages(canned)	140g	2.03	2.28	2.32	2.10	(1.66)	10.48	12.39
Ham	450g	12.65	14.90	14.90	14.50	0.00	2.76	17.79
1.03 FISH AND FISH PREPARATIONS								
Fish (fresh)								
(a) pot	kg	15.40	15.40	14.85	15.40	3.70	(3.57)	0.00
(b) snapper	kg	15.40	15.40	14.85	15.40	3.70	(3.57)	0.00
(c) tuna	kg	15.40	15.40	14.85	15.40	3.70	(3.57)	0.00
Salted Fish	kg	18.06	23.94	21.25	18.96	12.65	12.08	32.55
Smoked Fish	kg	8.90	12.82	11.66	9.57	9.95	21.84	44.04
Canned Fish								
(a) sardines	106g	2.29	2.85	2.68	2.45	6.44	9.39	24.56
(b) tuna	174.8g	3.26	3.13	3.28	3.12	(4.50)	5.13	(3.91)
1.04 DAIRY PRODUCTS								
MILK								
Evaporated Milk	410g	2.09	2.22	2.24	2.18	(0.89)	2.75	6.22
Powdered Milk	1800g	24.96	29.29	28.90	27.78	1.36	4.03	17.36
Butter	250g	4.20	5.76	5.67	4.28	1.59	32.48	37.14
Cheese	kg	16.76	21.46	19.43	16.95	10.45	14.63	28.04
Eggs	doz	6.87	7.87	7.40	7.35	6.35	0.68	14.56

TABLE 11.CONT'D

JANUARY 2001 = 100.0								
ITEMS DESCRIPTION AND SPECIFICATION	UNIT	BASE PRICE JAN 2001	DEC 2006	DEC 2005	DEC 2004	% CHANGE DEC 05 - DEC 06	% CHANGE DEC 04 - DEC 05	% CHANGE BASE PRICE JAN 01 - DEC 06
1.05 OILS & FATS								
Cooking Oil (Soya)	1 litre	7.65	6.94	6.83	6.67	1.61	2.40	(9.28)
Margarine	kg	5.03	6.16	5.49	5.27	12.17	4.17	22.43
1.06 CEREALS								
Bread								
(a) sandwich loaf(sliced)	pkg	2.92	3.12	3.12	3.03	0.00	2.97	6.85
Other Cereal Products								
Flour (loose white)	kg	2.13	2.14	2.17	2.20	(1.38)	(1.36)	0.47
Rice								
(a) loose white	kg	2.25	2.26	2.37	2.32	(4.64)	2.16	0.44
(b) brand packaged	kg	3.18	3.05	2.89	2.75	5.54	5.09	(4.09)
Macaroni	206g	2.42	2.74	2.95	2.94	(7.12)	0.34	13.22
Corn Meal	kg	3.36	4.93	4.73	4.53	4.23	4.42	46.73
Cornflakes	7oz	11.02	11.84	11.81	11.65	0.25	1.37	7.44
Oats	450g	5.32	8.28	7.75	7.18	6.84	7.94	55.64
Breakfast Food(Drinks)								
Cocoa	198g	7.41	9.46	8.19	7.68	15.51	6.64	27.67
Coffee								
(a) instant	50g	8.48	8.53	8.83	8.22	(3.40)	7.42	0.59
(b) local beans	kg	13.20	13.20	11.00	13.20	20.00	(16.67)	0.00
Tea	pkg-25	6.12	4.89	4.87	4.81	0.41	1.25	(20.10)
Ovaltine	400g	11.95	11.90	12.47	12.36	(4.57)	0.89	(0.42)
Milo	450g	11.00	11.85	11.58	11.58	2.33	0.00	7.73
1.07 VEGETABLES AND FRUITS								
VEGETABLES(Fresh)								
Tomatoes	kg	11.37	10.39	10.98	11.22	(5.40)	(2.14)	(8.65)
Carrots	kg	8.46	9.46	9.97	10.44	(5.12)	(4.50)	11.82
Cabbages	kg	4.43	8.40	8.61	7.28	(2.48)	18.27	89.54
Onions (imported)	kg	3.90	4.51	4.51	4.15	0.00	8.67	15.64
Garlic (imported)	kg	10.07	9.58	9.17	9.46	4.47	(3.07)	(4.87)
Cucumbers	kg	2.72	3.69	3.68	2.96	0.36	24.32	35.78
Pumpkins	kg	3.47	3.53	2.74	3.00	28.83	(8.67)	1.73
Lettuce	med head	4.00	4.05	4.48	4.57	(9.67)	(1.97)	1.17
Sweet Peppers	kg	9.68	12.14	10.41	9.40	16.62	10.74	25.41
Celery	bundle	1.53	1.45	1.72	1.46	(15.70)	17.81	(5.23)
Parsley	bundle	1.53	1.39	1.63	1.46	(14.52)	11.64	(8.93)
Thyme	bundle	1.53	1.54	1.43	1.46	7.69	(2.05)	0.65
Scallions(chives)	bundle	1.53	1.59	1.66	1.46	(4.02)	13.70	4.14
STARCHY FOODS								
Yams	kg	4.40	4.58	5.23	3.83	(12.43)	36.55	4.09
Dasheens	kg	1.19	2.16	2.11	2.49	2.37	(15.26)	81.51
Bananas(green)	kg	0.23	0.59	0.37	0.31	59.46	19.35	156.52
Potatoes(not sweet)	kg	3.89	4.61	4.37	4.33	5.49	0.92	18.51
Potatoes(sweet)	kg	2.99	4.48	4.25	3.81	5.41	11.55	49.83
Tannias	kg	3.10	5.58	4.08	4.03	36.76	1.24	80.00
Plantains (green)	kg	0.73	2.28	0.93	1.06	145.16	(12.26)	212.33
Plantains (ripe)	kg	1.28	1.98	1.55	1.80	27.74	(13.89)	54.69
Cassava Farine	kg	12.47	16.93	14.39	10.42	17.62	38.10	35.73
DRIED VEGETABLES								
Peas	kg	6.49	7.24	10.25	6.60	(29.37)	55.30	11.56
Beans	kg	6.73	8.74	8.26	8.34	5.81	(0.96)	29.87
Lentils	kg	4.55	4.94	5.00	5.04	(1.15)	(0.79)	8.63
CANNED VEGETABLES								
	241.2g	3.40	2.77	3.76	3.04	(26.33)	23.68	(18.53)

TABLE 11.CONT'D

JANUARY 2001 = 100.0

ITEMS DESCRIPTION AND SPECIFICATION	UNIT	BASE PRICE JAN 2001	DEC 2006	DEC 2005	DEC 2004	% CHANGE DEC 05 - DEC 06	% CHANGE DEC 04 - DEC 05	% CHANGE BASE PRICE JAN 01 - DEC 06
1.08 FRUIT AND FRUIT PREPARATIONS								
Fresh Fruits								
Oranges	each	0.64	0.49	0.54	0.44	(9.26)	22.73	(23.44)
Grapefruits	each	0.39	0.28	0.25	0.25	12.00	0.00	(28.21)
Limes	kg	4.41	4.67	3.19	3.21	46.39	(0.62)	5.90
Coconuts (dry)	each	0.33	0.67	0.33	0.33	103.03	0.00	103.03
Melons	kg	2.86	3.58	3.70	3.03	(3.24)	22.11	25.17
Pineapples	kg	5.11	4.79	4.83	3.84	(0.83)	25.78	(6.26)
Dried Fruit(prunes)	kg	10.66	10.86	10.86	10.86	0.00	0.00	1.88
1.09 SUGAR AND OTHER SWEETS								
SUGAR OR EQUIVALENT								
White Sugar	kg	2.30	2.61	2.38	2.38	9.66	0.00	13.48
Brown Sugar	kg	2.10	2.19	2.18	2.18	0.46	0.00	4.29
1.10 MISCELLANEOUS								
CONDIMENTS AND SAUCES								
CONDIMENTS								
Salt	kg	1.46	1.56	1.48	1.49	5.41	(0.67)	6.85
Nutmegs	kg	35.00	35.00	35.00	35.00	0.00	0.00	0.00
Ginger	kg	5.39	4.43	6.39	4.69	(30.67)	36.25	(17.81)
SAUCES AND RELISHES								
Tomato Ketchup	750ml	5.25	5.33	5.60	5.43	(4.82)	3.13	1.52
Pepper Sauce	85ml	2.09	2.22	2.31	2.20	(3.90)	5.00	6.22
Mustard	485g	5.59	5.36	5.36	5.36	0.00	0.00	(4.11)
BABY FOODS								
(a) Cereal		9.57	10.26	10.26	10.26	0.00	0.00	7.21
(b) Strained/puree food		2.26	2.25	2.25	2.25	0.00	0.00	(0.44)
MEALS TAKEN AWAY FROM HOME								
Ham Sandwich	each	4.67	5.47	4.83	4.67	13.25	3.43	17.13
Roti	each	7.43	7.78	7.27	7.35	7.02	(1.09)	4.71
DRINKS TAKEN AWAY FROM HOME								
Passion fruit juice	med glass	3.48	4.32	3.42	3.42	26.32	0.00	24.14
Grapefruit juice	med glass	3.81	4.23	3.50	3.50	20.86	0.00	11.02
1.11 NON-ALCOHOLIC BEVERAGES								
Coca-cola								
Coke	85ml	1.58	1.88	1.75	1.75	7.43	0.00	18.99
Juc	85ml	1.65	2.00	2.00	2.00	0.00	0.00	21.21
Instant drink	350g	7.50	8.05	8.05	8.05	0.00	0.00	7.33

TABLE 11.CONT'D

JANUARY 2001 = 100.0

ITEMS DESCRIPTION AND SPECIFICATION	UNIT	BASE PRICE JAN 2001	DEC 2006	DEC 2005	DEC 2004	% CHANGE DEC 05 - DEC 06	% CHANGE DEC 04 - DEC 05	% CHANGE BASE PRICE JAN 01 - DEC 06
2.0 ALCOHOLIC BEVERAGES AND TOBACCO								
2.01 ALCOHOLIC BEVERAGES								
Rum	750ml	15.53	15.49	14.92	15.15	3.82	(1.52)	(0.26)
Whisky	75cl	36.67	44.95	44.95	44.27	(0.01)	1.54	22.57
Brandy	70cl	17.84	25.24	23.56	23.68	7.13	(0.51)	41.48
Gin	75cl	36.41	37.96	31.43	31.62	20.78	(0.60)	4.26
Wine	750ml	10.25	11.37	11.27	10.76	0.91	4.74	10.95
Beers	8.75 fl.oz.	3.14	3.37	3.46	3.43	(2.60)	0.87	7.32
Stout	275ml	5.04	6.15	5.48	5.40	12.23	1.48	22.02
2.02 TOBACCO PRODUCTS								
Cigarettes (local)	pkg/20	3.06	3.69	3.32	3.24	11.14	2.47	20.59
(imported)	pkg/20	4.80	5.47	4.92	4.92	11.18	0.00	13.96
3.0 CLOTHING FOOTWEAR AND ACCESSORIES								
3.01 CLOTHING								
3.011 WOMENSWEAR								
Dresses								
(a) casual	each	97.41	75.23	75.23	82.44	0.00	(8.75)	(22.77)
(b) formal	each	283.00	275.00	275.00	275.00	0.00	0.00	(2.83)
Blouses	each	30.00	39.75	39.95	36.95	(0.50)	8.12	32.50
Skirts	each	71.35	60.00	60.00	60.00	0.00	0.00	(15.91)
Suits	each	216.13	189.32	189.32	189.32	0.00	0.00	(12.40)
Dressmaking Fees	2 piece	50.00	50.00	50.00	50.00	0.00	0.00	0.00
Dressmaking Material								
(a) formal	per yard	14.95	17.15	17.15	17.50	0.00	(2.00)	14.72
(b) semi-formal	per yard	13.95	10.70	10.70	10.70	0.00	0.00	(23.30)
3.012 GIRLSWEAR								
Dresses								
(a) casual	each	149.00	107.50	107.50	107.50	0.00	0.00	(27.85)
(b) formal	each	157.98	140.91	142.57	142.57	(1.16)	0.00	(10.81)
Girls' blouses	each	35.00	24.95	25.00	25.95	(0.20)	(3.66)	(28.71)
3.013 MENSWEAR								
Shirts								
(a) long sleeve	each	71.00	62.00	64.48	64.48	(3.85)	0.00	(12.68)
(b) short sleeve	each	66.63	56.69	56.69	56.69	0.00	0.00	(14.92)
Suits	each	301.00	295.00	295.00	295.00	0.00	0.00	(1.99)
Pants								
men's dress pants	each	94.53	58.35	54.54	56.88	6.99	(4.11)	(38.27)
Men's Jeans	each	82.58	72.48	71.69	73.69	1.10	(2.71)	(12.23)
Sportswear								
(a) sneakers	pair	99.00	89.95	89.95	95.00	0.00	(5.32)	(9.14)
(b) shorts	each	47.88	45.00	45.00	44.75	0.00	0.56	(6.02)
3.014 BOYSWEAR								
Shirts								
(a) long sleeve	each	57.82	41.45	41.45	39.34	0.00	5.36	(28.31)
(b) short sleeve	each	23.33	20.80	19.72	19.18	5.48	2.82	(10.84)
Pants (dress)	each	71.35	65.00	65.00	65.00	0.00	0.00	(8.90)
Boy's Jeans	each	35.61	26.67	29.16	32.36	(8.54)	(9.89)	(25.11)
3.015 INFANTSWEAR								
Disposable diapers (pkg/12)	pkg/12	14.20	13.12	13.32	12.68	(1.50)	5.05	(7.61)
Cotton Diapers (pkg/12)	dozen	34.50	37.09	37.09	37.09	0.00	0.00	7.51

TABLE 11.CONT'D

JANUARY 2001 = 100.0

ITEMS DESCRIPTION AND SPECIFICATION	UNIT	BASE	DEC 2006	DEC 2005	DEC 2004	% CHANGE	% CHANGE	% CHANGE
		PRICE JAN 2001				DEC 05 - DEC 06	DEC 04 - DEC 05	BASE PRICE JAN 01 - DEC 06
3.02 FOOTWEAR								
3.021 WOMENS' SHOES								
(a) casual	pair	68.37	72.98	77.44	76.88	(5.77)	0.73	6.74
(b) formal	pair	82.73	74.36	76.88	77.30	(3.28)	(0.54)	(10.12)
3.022 GIRL'S SHOES								
(a) casual	pair	56.80	58.99	57.40	59.18	2.76	(3.01)	3.85
(b) formal	pair	62.03	65.17	66.13	64.41	(1.46)	2.67	5.05
3.023 BOY'S SHOES								
(a) casual	pair	59.30	66.03	63.65	64.75	3.73	(1.70)	11.34
(b) formal	pair	64.63	68.90	72.44	73.19	(4.89)	(1.02)	6.61
3.024 MEN'S SHOES								
(a) casual	pair	84.03	79.30	80.29	80.55	(1.23)	(0.32)	(5.63)
(b) formal	pair	134.60	145.00	152.94	152.94	(5.19)	0.00	7.73
3.03 CLOTHING ACCESSORIES								
Watches								
Women's	each	90.00	112.50	112.50	112.50	0.00	0.00	25.00
Men's	each	140.00	150.00	150.00	150.00	0.00	0.00	7.14
Handbags/Pocket Books	each	68.25	66.63	69.10	71.63	(3.57)	(3.53)	(2.37)
4.0 ACCOMMODATION								
4.01 HOUSING AND UTILITIES								
4.011 RENT								
(a) 0-100	month	61.07	63.67	63.67	63.67	0.00	0.00	4.26
(b) 101-200	month	165.60	168.60	168.60	168.60	0.00	0.00	1.81
(c) 201-350	month	291.67	291.67	291.67	291.67	0.00	0.00	0.00
(d) 351-500	month	515.00	515.00	515.00	515.00	0.00	0.00	0.00
(e) 501-650	month	600.00	600.00	600.00	600.00	0.00	0.00	0.00
(f) 651-800	month	740.00	740.00	740.00	740.00	0.00	0.00	0.00
(g) 801-950	month	875.00	875.00	875.00	875.00	0.00	0.00	0.00
(h) 951-1101	month	1000.00	1000.00	1000.00	1000.00	0.00	0.00	0.00
Water Rates (avg. of metered and non metered)	month	47.83	47.80	47.80	47.80	0.00	0.00	(0.06)
Sewerage Rates (owner occupied)	month	10.60	10.60	10.60	10.60	0.00	0.00	0.00
4.012 REPAIRS TO HOUSE								
Lumber	foot	3.38	3.84	3.38	3.43	13.46	(1.46)	13.46
Cement	94 lb	13.76	18.53	15.92	15.65	16.39	1.73	34.67
Steel	1/2"length 20ft.	8.50	17.82	16.90	18.21	5.41	(7.19)	109.59
Paint	gallon	62.00	58.75	64.15	62.90	(8.42)	1.99	(5.24)
Labour								
unskilled	day	37.50	37.50	37.50	37.50	0.00	0.00	0.00
skilled	day	75.00	90.00	90.00	90.00	0.00	0.00	20.00
4.013 HOME INSURANCE PAYMENTS (premium on concrete structure in urban area)								
	year(per \$1000 value)	9.00	9.00	9.00	9.00	0.00	0.00	0.00
5.0 FUEL AND LIGHT								
5.01 Fuel								
Kerosene	gal.	4.35	8.52	9.41	7.64	(9.46)	23.17	95.86
Charcoal	ker(box)	12.00	14.00	14.50	14.00	(3.45)	3.57	16.67
Gas(cooking)	20lb cylinder	29.30	32.18	33.87	31.36	(4.99)	8.00	9.83
5.02 Electricity								
	month	78.00	108.10	111.88	88.54	(3.38)	26.36	38.59

TABLE 11.CONT'D

JANUARY 2001 = 100.0

ITEMS DESCRIPTION AND SPECIFICATION	UNIT	BASE PRICE JAN 2001	DEC 2006	DEC 2005	DEC 2004	% CHANGE DEC 05 - DEC 06	% CHANGE DEC 04 - DEC 05	% CHANGE BASE PRICE JAN 01 - DEC 06
6.0 MEDICAL AND HEALTH EXPENSES								
6.01 PATENT MEDICINES								
Liquid Medicine	120ml	8.65	11.85	10.40	9.75	13.94	6.67	36.99
Medicated Cream	30g	11.78	15.43	10.73	11.90	43.80	(9.83)	30.98
Vitamin Supplement(liquid)	300ml	11.35	15.18	11.48	11.35	32.23	1.15	33.74
6.02 Doctor's Visit								
Doctor's Fees	per visit	75.00	90.00	75.00	75.00	20.00	0.00	20.00
Dentist's Fees	per visit	30.00	40.00	30.00	30.00	33.33	0.00	33.33
Eye Specialist	per exam.	90.00	95.00	90.00	90.00	5.56	0.00	5.56
Health Insurance	month	59.39	61.33	61.33	61.33	0.00	0.00	3.27
6.03 HOSPITAL EXPENSES								
Medical								
Minor Surgery	single	250.00	250.00	250.00	250.00	0.00	0.00	0.00
Major Surgery	single	800.00	800.00	800.00	800.00	0.00	0.00	0.00
Fees								
Adult	per night	20.00	20.00	20.00	20.00	0.00	0.00	0.00
6.04 MISCELLANEOUS								
Contraceptives								
Oral Pills	pkg	9.23	9.50	9.23	9.23	2.93	0.00	2.93
Condom	pkg	3.30	4.25	4.00	4.00	6.25	0.00	28.79
7.0 HOUSEHOLD AND FURNITURE EQUIPMENT								
7.01 FURNITURE & FURNISHINGS								
Living Room Furniture								
three piece set	set	1870.50	1842.07	1842.07	1842.07	0.00	0.00	(1.52)
Carpet (vinyl)	yard	14.95	10.63	9.30	14.95	14.30	(37.79)	(28.90)
Dining Room Furniture								
Table with 4 chairs	set	1044.75	1297.08	1234.48	1234.48	5.07	0.00	24.15
Bedroom Furniture								
Beds (double-wooden)	each	1149.58	1229.33	1202.67	1262.67	2.22	(4.75)	6.94
Mattresses (double,6")	each	308.25	438.67	431.67	408.33	1.62	5.72	42.31
Sheets (4 piece full)	set	112.38	115.72	115.72	111.82	0.00	3.49	2.97
Wardrobes(standard,mirror,5 drawers)	each	1324.50	1349.50	1349.50	1349.50	0.00	0.00	1.89

TABLE 11.CONT'D

JANUARY 2001 = 100.0

ITEMS DESCRIPTION AND SPECIFICATION	UNIT	BASE PRICE JAN 2001	DEC 2006	DEC 2005	DEC 2004	% CHANGE DEC 05 - DEC 06	% CHANGE DEC 04 - DEC 05	% CHANGE BASE PRICE JAN 01 - DEC 06
7.02 BABIES' FURNITURE & EQUIPMENT								
Cribs (standard)	each	800.00	800.00	800.00	800.00	0.00	0.00	0.00
Blankets 30**30"	pkg/2	18.99	19.50	20.45	20.45	(4.65)	0.00	2.69
7.03 KITCHEN EQUIPMENT								
Refrigerator 15 cu.ft	each	2620.02	2812.13	2819.09	2775.32	(0.25)	1.58	7.33
Stove 4 burner	each	823.14	856.63	754.08	734.08	13.60	2.72	4.07
Blender 7 speed,1 1/4 litre cup	each	163.13	146.00	146.00	146.00	0.00	0.00	(10.50)
Pots regular 26cm	each	57.88	53.38	51.69	51.69	3.27	0.00	(7.77)
7.05 RECREATIONAL EQUIPMENT								
Radios with recorder(high speed, cont. play)	set	483.75	489.50	504.00	498.50	(2.88)	1.10	1.19
Stereo Sets(double deck,6 band equaliser, cd,turn table,radio am/fm	set	1378.88	1206.28	1143.17	1188.07	5.52	(3.78)	(12.52)
Television Sets								
colour 20 inch remote control	set	1330.35	876.06	1053.57	1012.72	(16.85)	4.03	(34.15)
VCR'S(Video Players/Recorders)	set	799.00	499.00	459.00	674.00	8.71	(31.90)	(37.55)
7.06 LAUNDRY & CLEANING EQUIPMENT								
Washing Machines 7 cycles	each	1995.39	1743.85	1743.85	1875.64	0.00	(7.03)	(12.61)
Iron steam	each	138.13	125.03	125.03	125.57	0.00	(0.43)	(9.48)
7.08 HOUSE CLEANING								
LAUNDRY SUPPLIES								
Soap								
(a) bar	each	0.98	0.84	0.89	0.89	(5.62)	0.00	(14.29)
(b) powder	400g	4.18	4.11	4.11	4.12	0.00	(0.24)	(1.67)
Bleach	16 fl.oz.	2.65	2.60	2.50	2.44	4.00	2.46	(1.89)
Fabric Softener	1 litre	7.15	9.07	7.85	7.80	15.54	0.64	26.85
SPRAYS AND DISINFECTANTS								
Insect Spray								
Baygon	400ml	10.69	11.96	12.00	11.71	(0.33)	2.48	11.88
Insect Repellants								
Fish Coil	pkg/6	2.33	2.39	2.47	2.56	(3.24)	(3.52)	2.58
Toilet Disinfectant	340g	4.42	3.50	3.61	4.25	(3.05)	(15.06)	(20.81)
Air fresheners	300ml	7.47	6.58	6.43	6.11	2.33	5.24	(11.91)
7.10 MISCELLANEOUS SERVICES								
7.101 Rental of Household Furniture								
Living Room Set	month	124.00	124.00	124.00	124.00	0.00	0.00	0.00
Refrigerator	month	146.20	160.72	160.72	160.79	0.00	(0.04)	9.93
Stove	month	56.00	56.00	56.00	56.00	0.00	0.00	0.00
Bed	month	70.25	71.93	71.93	66.59	0.00	8.02	2.39
7.102 DOMESTIC HELP Live In								
Live Out	month	324.00	324.00	324.00	324.00	0.00	0.00	0.00
	month	400.00	400.00	400.00	400.00	0.00	0.00	0.00
8.0 TRANSPORTATION AND COMMUNICATION								
8.01 PURCHASED TRANSPORTATION								
Bus Fares								
(a) 8 miles from city(1 way)	fare	4.00	4.50	4.50	4.50	0.00	0.00	12.50
Taxi Fares 3 miles from city(1 way)								
	fare	20.00	20.00	20.00	20.00	0.00	0.00	0.00
Air Fares								
(a)Dom/New York/Dom 21 dys	fare	1996.00	1823.70	2310.05	2200.00	(21.05)	5.00	(8.63)
(b)Dom/St.Maart/Dom 21 dys	fare	662.00	773.90	754.14	794.00	2.62	(5.02)	16.90
Sea Travel								
(a)Dom./G.loupe/Dom.	fare	246.00	275.00	275.00	256.00	0.00	7.42	11.79

TABLE 11.CONT'D

JANUARY 2001 = 100.0

ITEMS DESCRIPTION AND SPECIFICATION	UNIT	BASE PRICE JAN 2001	DEC 2006	DEC 2005	DEC 2004	% CHANGE DEC 05 - DEC 06	% CHANGE DEC 04 - DEC 05	% CHANGE BASE PRICE JAN 01 - DEC 06
8.02 PURCHASE OF MOTOR VEHICLES								
Motor Cars (1)	each	22716.67	23833.33	23833.33	23833.33	0.00	0.00	4.92
Vans	each	54750.00	50000.00	50000.00	50000.00	0.00	0.00	(8.68)
Trucks	each	54500.00	54500.00	54500.00	54500.00	0.00	0.00	0.00
8.03 OPERATIONAL EXPENSES								
Petrol regular	gall	6.50	10.19	11.00	8.96	(7.36)	22.77	56.77
Oil & Grease								
(a) oil	can	10.09	11.21	11.02	10.23	1.72	7.72	11.10
(b) grease	can	11.71	13.50	13.00	13.49	3.85	(3.63)	15.29
Tyres	each	209.08	209.08	209.08	209.08	0.00	0.00	0.00
Batteries	each	239.75	231.97	231.97	232.92	0.00	(0.41)	(3.25)
Servicing(labour)								
(a) motor car 1300cc (minor serv.)	per service	109.50	109.50	109.50	109.50	0.00	0.00	0.00
(b) van	per service	114.50	114.50	114.50	114.50	0.00	0.00	0.00
Servicing(vehicle parts)								
(a) motor car 1300cc (minor serv)	per service	219.00	219.00	219.00	219.00	0.00	0.00	0.00
(b) van	per service	219.00	219.00	219.00	219.00	0.00	0.00	0.00
8.04 INSURANCE, TAXES,FEES								
Insurance (full)	year	2677.50	2711.25	2711.25	2677.50	0.00	1.26	1.26
Vehicle License	year	440.00	440.00	440.00	440.00	0.00	0.00	0.00
Drivers License	year	80.00	80.00	80.00	80.00	0.00	0.00	0.00
Telephone (2)	month	42.76	37.40	37.12	41.30	0.75	(10.12)	(12.54)
9.0 EDUCATIONAL EXPENSES								
School fees (pre-school)	month	75.00	262.00	225.00	225.00	16.44	0.00	249.33
Computers	each	2899.50	2960.00	2960.00	2960.00	0.00	0.00	2.09
Text Books(High School)								
(a) English form 1	each	30.85	32.48	33.64	32.49	(3.45)	3.54	5.28
(b) English form 4	each	32.16	39.80	38.35	34.44	3.78	11.35	23.76
(c) Maths form 1	each	36.20	51.00	46.50	46.00	9.68	1.09	40.88
(d) Maths form 4	each	45.34	59.25	56.88	51.90	4.17	9.60	30.68
(e) Science form 1	each	35.56	45.00	46.58	43.58	(3.39)	6.88	26.55
(e) Biology form 4	each	51.26	64.00	66.37	63.37	(3.57)	4.73	24.85
10.0 SERVICES								
10.01 Gym Services	month	60.00	62.50	62.50	65.00	0.00	(3.85)	4.17
10.02 Cable TV Service	month	50.00	57.50	53.75	53.75	6.98	0.00	15.00
10.04 LAUNDRY AND DRY CLEANING SERVICES								
(a) one medium load	per load	6.00	8.00	7.00	6.00	14.29	16.67	33.33
(b) one suit(ladies)	per suit	21.00	24.15	21.50	21.50	12.33	0.00	15.00
(c) one suit(men's)	per suit	25.00	28.75	25.00	25.00	15.00	0.00	15.00
10.05 Hair Care and Supplies								
Hair cuts(men)	one	10.00	10.00	10.00	10.00	0.00	0.00	0.00
Hair dressing(ladies)								
Hair relaxer	one	50.00	56.67	55.00	50.00	3.04	10.00	13.34
Hair wash & set	one	20.00	30.00	30.00	20.00	0.00	50.00	50.00
11.0 MISCELLANEOUS EXPENSES								
11.01 PERSONAL CARE SUPPLIES								
Toilet Soap	135g	2.00	1.92	1.94	1.91	(1.03)	1.57	(4.00)
Tooth Paste	80ml	4.81	6.05	6.15	6.07	(1.63)	1.32	25.76
Deodorant	4oz	11.43	11.22	11.27	11.75	(0.44)	(4.09)	(1.84)
Tooth Brushes	each	4.40	5.20	4.90	4.90	6.12	0.00	18.18
Personal Toilet Supplies								
Body Lotion	16 fl.oz.	12.46	15.13	15.13	15.01	0.00	0.80	21.43
Perfumes	50ml	55.18	48.98	48.98	46.50	0.00	5.33	(11.24)
Colognes	2 fl.oz	12.66	19.83	19.83	19.81	0.00	0.10	56.39
11.02 READING MATERIAL & OTHER EXP.								
Newspaper	each	1.67	1.67	1.67	1.67	0.00	0.00	0.00
Magazines	each	8.95	8.73	8.73	8.73	0.00	0.00	(2.46)
Cinema(Movie) Fares	ticket	5.00	10.00	10.00	9.75	0.00	2.56	100.00

NOTES FOR TABLE 11:

Purchase of Motor Vehicles

(1) From the 2001 base period, prices were recorded for reconditioned cars (the most frequently purchased cars).

Telephone Fees

(2) For 2001 two zones were in existence. Rates were calculated at an average

of \$0.28 and \$0.70 and multiplied by the average number of calls per domestic customer per zone.

For 2002 rates were calculated for one general zone at average of \$0.08; \$0.07 and \$0.05 and multiplied by the average number of calls and type of call per domestic customer. The average number of calls varies per month.

For 2003 rates were calculated for one general zone at average of \$0.09; \$0.08 and \$0.06 and multiplied by the average number of calls and type of call per domestic customer. The average number of calls varies per month.

For 2004 rates were calculated as in 2003

For 2005 rates were calculated for one general zone at average of \$0.07; \$0.05 and \$0.05 and multiplied by the average number of calls and type of call per domestic customer. The average number of calls varies per month.

For 2006 rates were calculated as in 2005

**TABLE 12. AVERAGE PRICE OF SELECTED FOOD ITEMS ,
2005 AND 2006 IN COMPARISON TO BASE YEAR PRICES**

ITEMS	Unit	Base Price January 2001	Avg Price Jan-Dec 2006	Avg Price Jan-Dec 2005	% Change Base Price - Jan-Dec 2006	% Change Jan-Dec 2005 - Jan Dec 2006
1 FOOD						
MEAT						
1.01 MEAT (fresh, chilled or frozen)						
Beef	Kg	15.40	13.87	13.83	(9.94)	0.29
Chicken						
Back & Neck	Kg	4.37	5.60	4.82	28.15	16.18
Wings	Kg	7.95	10.54	9.49	32.58	11.06
Whole Legs	Kg	6.05	8.27	7.75	36.69	6.71
Drumsticks	Kg	5.57	7.77	7.03	39.50	10.53
Chicken Franks	Pkg-10	3.76	4.42	4.22	17.55	4.74
Turkey Drumstick	Kg	5.41	8.41	7.51	55.45	11.98
Pork	Kg	13.39	13.69	13.34	2.24	2.62
1.02 MEAT(Preserved)						
Corned Beef	12 oz	4.82	5.39	4.92	11.83	9.55
Salted Pork	Kg	10.50	12.59	10.65	19.90	18.22
Sausages(canned)	140g	2.03	2.30	2.17	13.30	5.99
1.03 FISH AND FISH PREPARATIONS						
Fish (fresh)	Kg	15.40	15.07	14.65	(2.14)	2.87
Salted Fish	Kg	18.06	22.60	20.02	25.14	12.89
Canned Fish						
Sardine	3.75 oz	2.29	2.77	2.53	20.96	9.49
Tuna	6 oz	3.26	3.21	3.25	(1.53)	(1.23)
1.04 DAIRY PRODUCTS						
MILK						
Evaporated Milk	14.5 oz	2.09	2.20	2.21	5.26	(0.45)
Full Cream Loose	Kg	8.76	10.38	9.72	18.49	6.79
Butter	250 g	4.20	6.05	5.00	44.05	21.00
Cheddar Cheese	Kg	16.76	20.74	18.73	23.75	10.73
Eggs	Dozen	6.87	7.73	7.39	12.52	4.60
1.05 OILS & FATS						
Cooking Oil						
Soya Oil	1 litre	7.65	6.85	6.71	(10.46)	2.09
Margarine	227 oz	5.03	5.80	5.43	15.31	6.81

Table 12. Cont'd

ITEMS	Unit	Base Price January 2001	Avg Price Jan-Dec 2006	Avg Price Jan-Dec 2005	% Change Base Price - Jan-Dec 2006	% Change Jan-Dec 2005 - Jan-Dec 2006
1.06 CEREALS						
Bread and Bakery Products						
Mastiff	Each	0.89	0.94	0.94	5.62	0.00
Hops	Each	0.25	0.25	0.25	0.00	0.00
Biscuits(unsweetened)	142 g	1.96	2.33	2.35	18.88	(0.85)
Other Cereal Products						
Flour	Kg	2.13	2.14	2.19	0.41	(2.28)
Rice(white loosed)	Kg	2.25	2.32	2.35	3.11	(1.28)
Rice(packaged)	Kg	3.18	2.81	2.84	(11.64)	(1.06)
Nova Macaroni & Cheese Dinner	225 g	2.42	2.88	2.95	19.01	(2.37)
Corn Meal	Kg	3.36	4.85	4.73	44.35	2.54
Oats	450 g	5.32	7.99	7.68	50.19	4.04
Breakfast Food(Drinks)						
Instant Nescafe offee	50 g	8.48	9.27	8.56	9.32	8.29
Ovalline	400 g	11.95	12.31	12.35	3.01	(0.32)
Milo	400 g	11.00	11.80	11.56	7.27	2.08
1.07 VEGETABLES AND FRUITS						
Vegetables						
VEGETABLES(Fresh)						
Tomatoes	Kg	11.37	9.25	9.51	(18.65)	(2.73)
Carrots	Kg	8.46	9.03	10.24	6.74	(11.82)
Garlic	Kg	10.07	8.95	9.05	(11.12)	(1.10)
Cucumbers	Kg	2.72	3.24	3.25	19.12	(0.31)
Pumpkins	Kg	3.47	2.97	3.01	(14.41)	(1.33)
Lettuce	Medium Head	4.00	4.12	3.88	3.00	6.19
STARCHY FOODS						
Yams	Kg	4.40	4.39	5.02	(0.23)	(12.55)
Dasheens	Kg	1.19	2.39	2.42	100.84	(1.24)
Bananas (green)	Kg	0.23	0.41	0.33	78.26	24.24
Potatoes(not sweet)	Kg	3.89	4.46	4.34	14.65	2.76
Potatoes(sweet)	Kg	2.99	3.85	4.90	28.76	(21.43)
Tannia	Kg	3.10	4.24	4.83	36.77	(12.22)
Plantains (green)	Kg	0.73	1.75	1.13	139.73	54.87
Plantains (ripe)	Kg	1.28	2.34	1.85	82.81	26.49
DRIED VEGETABLES						
Red Beans	Kg	6.73	8.42	8.33	25.11	1.08
Lentils	Kg	4.55	5.05	5.03	10.99	0.40

Table 12. Cont'd

ITEMS	Unit	Base Price January 2001	Avg Price Jan-Dec 2006	Avg Price Jan-Dec 2005	% Change Base Price - Jan-Dec 2006	% Change Jan-Dec 2005 - Jan-Dec 2006
1.08 FRUIT AND FRUIT PREPARATIONS						
Fresh Fruits						
Oranges	Each	0.64	0.60	0.46	(6.25)	30.43
Grapefruits	Each	0.39	0.29	0.30	(25.64)	(3.33)
Pineapples	Kg	5.11	4.25	3.93	(16.83)	8.14
Apples	Each	2.23	2.70	2.52	21.08	7.14
1.09 SUGAR AND OTHER SWEETS						
SUGAR OR EQUIVALENT						
White Sugar	Kg	2.30	2.47	2.38	7.39	3.78
Brown Sugar	Kg	2.10	2.17	2.18	3.33	(0.46)
1.10 MISCELLANEOUS						
1.101 MISCELLANEOUS(excl. meals & drinks away from home)						
SOUPS						
Soups (packaged)	60 g	1.58	1.62	1.60	2.53	1.25
CONDIMENTS SAUCES AND RELISHES						
Salt	Kg	1.46	1.57	1.48	7.53	6.08
Tomato Ketchup	750 ml	5.25	5.44	5.57	3.62	(2.33)
Mayonnaise	16 fl.oz	5.83	5.57	5.40	(4.46)	3.15
Vinegar	375 ml	2.73	6.32	3.85	131.50	64.16
BABY FOODS						
(a) Cereal	500 g	9.57	10.26	10.26	7.21	0.00
1.11 MEALS AND DRINKS TAKEN AWAY FROM HOME						
Meals(light)						
Chicken & Chips(99-3)	each	8.83	10.40	9.33	17.78	11.47
Pelau(99-3)	each	9.47	9.47	9.47	0.00	0.00

TABLE 13.

**PRICES OF SELECTED FOOD ITEMS FROM VARIOUS AREAS
DECEMBER 2006**

ITEMS	UNIT	ROSEAU	PORTSMOUTH	CARIB RESERVE	LAPLAINE	WESLEY
Chicken						
Wings	kg	11.70	11.81	...	10.45	...
Whole leg	kg	7.97
Thighs	kg	8.17	7.79
Meat Preserved						
Corned Beef	12oz	5.51	5.51	5.60
Salted Pork	kg	12.10	12.10	11.00
Sausages	140g	2.31	2.50	2.50	2.00	2.25
Fish and Fish Prep						
Salted Fish	kg	24.15	22.22	22.00	21.45	27.39
Smoked Fish	kg	12.74	12.98
Sardines	106g	2.81	2.99	2.75	2.75	...
Tuna (Canned)	6oz	2.77	3.99	...	3.00	...
Diary Products						
Evaporated Milk	410g	2.06	2.00	2.50	2.20	2.50
Full Cream Milk	kg	...	13.09	11.00	12.65	14.30
Butter	250g	5.76
Cheese	kg	21.46
Eggs	doz	7.57	8.77
Oils and Fats						
Cooking Oil	1litre	6.97	6.90
Margarine	454g	6.70	5.50	...	6.75	5.15
Cereal						
Bread						
"Mastiff"	each	0.75	...	1.00
"Hops"	each	0.25
Rice (loose)	kg	2.13	2.26	2.75	3.19	2.75
packaged	kg	2.72	2.65	...	2.95	...
Flour	kg	2.08	2.20	2.20	...	2.20
Dried Vegetable						
Beans	kg	7.60	8.69	10.45	9.90	8.76
Lentils	kg	4.38	4.40	6.60	5.50	5.50
Sugar						
White	kg	2.60	2.59	...	2.75	2.97
Brown	kg	2.14	2.14	2.20	2.42	...
Miscellaneous						
Soups	60g	1.43	1.40	...	1.75	...
Salt	kg	1.20	...	1.65	...	1.65
Cereal (Infant)	500g	10.01	10.99	...

**TABLE 14. PRICES OF SELECTED FOOD ITEMS :ROSEAU
JANUARY 2006 AND DECEMBER 2006**

(Average Price)

FOOD ITEM	UNIT	JAN 2006	DEC 2006	PERCENTAGE CHANGE
Chicken				
Wings	kg	10.05	11.70	16.42
Whole legs	kg	8.24	7.97	-3.28
Thighs	kg	8.56	8.17	-4.56
Meat Preserved				
Corned Beef	12oz	5.00	5.51	10.20
Salted Pork	kg	13.20	12.10	-8.33
Sausages	140g	2.20	2.31	5.00
Fish and Fish Preparation				
Salted Fish	kg	20.17	24.15	19.73
Smoked fish	kg	11.74	12.74	8.52
Sardines	106g	2.59	2.81	8.49
Tuna	6oz	3.08	2.77	-10.06
Diary Products				
Evaporated milk	410g	2.20	2.06	-6.36
Butter	250g	5.67	5.76	1.59
Cheese	kg	19.43	21.46	10.45
Eggs	dozen	7.20	7.57	5.14
Oils and fats				
Cooking Oil	1 lit	6.89	6.97	1.16
Margarine	454g	5.88	6.70	13.95
Cereals				
Bread				
Mastiff	each	0.75	0.75	0.00
Hops	each	0.25	0.25	0.00
Other				
Flour	kg	2.13	2.08	-2.35
Rice(white)	kg	2.13	2.13	0.00
packaged	1kg	2.72	2.72	0.00
Dried Vegetables				
Beans	kg	7.60	7.60	0.00
Lentils	kg	4.38	4.38	0.00
Sugar				
White Sugar	kg	2.60	2.60	0.00
Brown Sugar	kg	2.14	2.14	0.00
Miscellaneous				
Soups(packaged)	60g	1.43	1.43	0.00
Salt	kg	1.04	1.20	13.33
Cereal(infant)	500g	10.01	10.01	0.00

**TABLE 15 PRICES OF SELECTED FOOD ITEMS :PORTSMOUTH
JANUARY 2006 AND DECEMBER 2006**

North				
FOOD ITEM	UNIT	JAN 2006	DEC 2006	PERCENTAGE CHANGE
Chicken				
Wings	kg	8.80	11.81	25.49
Thighs	kg	7.59	7.79	2.57
Meat Preserved				
Corned Beef	12oz	4.35	5.51	21.05
Salted Pork	kg	9.18	12.10	24.13
Sausages	140g	2.50	2.50	0.00
Fish and Fish Preparation				
Sardines	106g	2.99	2.99	0.00
Tuna	6oz	3.98	3.99	0.25
Diary Products				
Evaporated milk	410g	2.00	2.00	0.00
Full Cream milk(loose)	kg	9.24	13.09	29.41
Eggs	dozen	8.20	8.77	6.50
Oils and fats				
Cooking Oil	1 lit	6.89	6.90	0.14
Margarine	454g	5.11	5.50	7.09
Cereals				
Rice (white)	kg	2.42	2.26	-7.08
brown	kg	3.14	2.97	-5.72
Rice (packaged)	2lbs	2.75	2.65	-3.77
Flour	kg	2.20	2.20	0.00
Dried Vegetables				
Beans	kg	7.65	8.69	11.97
Sugar				
White Sugar	kg	2.30	2.59	11.20
Brown Sugar	kg	2.15	2.14	-0.47
Miscellaneous				
Soups(packaged)	60g	1.57	1.40	-12.14

Portsmouth is 29 miles along the coast from the city of Roseau

**TABLE 16. PRICES OF SELECTED FOOD ITEMS:CARIB RESERVE
JANUARY 2006 AND DECEMBER 2006**

East

FOOD ITEM	UNIT	JAN 2006	DEC 2006	PERCENTAGE CHANGE
Meat Preserved				
Salted Pork	kg	12.10	11.00	-10.00
Sausages	140g	2.50	2.50	0.00
Diary Products				
Evaporated milk	410g	2.50	2.50	0.00
Full Cream milk(loose)	kg	10.45	11.00	5.00
Cereals				
Mastiff	each	1.00	1.00	0.00
Flour	kg	2.20	2.20	0.00
Rice(white)	kg	2.75	2.75	0.00
Dried Vegetables				
Beans	kg	8.80	10.45	15.79
Lentils	kg	6.60	6.60	0.00
Sugar				
Brown Sugar	kg	2.20	2.20	0.00
Miscellaneous				
Salt	kg	1.65	1.65	0.00

Carib Reserve is 37 miles from the city of Roseau

TABLE 17.

PRICES OF SELECTED FOOD ITEMS :LA PLAINE
JANUARY 2006 AND DECEMBER 2006

South East

FOOD ITEM	UNIT	JAN 2006	DEC 2006	PERCENTAGE CHANGE
Chicken				
Wings	kg	9.90	10.45	5.26
Meat Preserved				
Sausages	140g	2.00	2.00	0.00
Fish and Fish Preparation				
Salted Fish	kg	22.00	21.45	-2.56
Sardine	106g	2.35	2.75	14.55
Tuna	6oz	2.99	3.00	0.33
Diary Products				
Evaporated milk	410g	2.25	2.20	-2.27
Full Cream milk(loose)	kg	10.56	12.65	16.52
Oils and fats				
Margarine	454g	5.20	6.75	22.96
Cereals				
Rice				
Brown(loose)	kg	2.97	3.19	6.90
Rice(Packaged)	800g	2.95	2.95	0.00
Cereal(Infant)	500g	10.99	10.99	0.00
Dried Vegetables				
Beans	kg	8.80	9.90	11.11
Lentils	kg	5.17	5.50	6.00
Sugar				
White Sugar	kg	2.20	2.75	20.00
Brown Sugar	kg	2.20	2.42	9.09
Miscellaneous				
Soups(packaged)	60g	1.75	1.75	0.00

La Plaine is 31 miles from the city of Roseau

**TABLE 18. PRICES OF SELECTED FOOD ITEMS :WESLEY
JANUARY 2006 AND DECEMBER 2006**

North East

FOOD ITEM	UNIT	JAN 2006	DEC 2006	PERCENTAGE CHANGE
Meat Preserved				
Corned Beef	12oz	6.00	5.60	-7.14
Sausages	140g	2.50	2.25	-11.11
Diary Products				
Evaporated milk	410g	2.50	2.50	0.00
Full Cream milk(loose)	kg	9.90	14.30	30.77
Oils and fats				
Margarine	454g	5.20	5.15	-0.97
Cereals				
Flour	kg	2.20	2.20	0.00
Rice(white)	kg	2.75	2.75	0.00
Dried Vegetables				
Beans	kg	8.80	8.76	-0.46
Lentils	kg	6.60	5.50	-20.00
Sugar				
White Sugar	kg	2.75	2.97	7.41
Miscellaneous				
Salt	kg	2.20	1.65	-33.33

Wesley is 39 miles from the city of Roseau

CHART 1 MONTHLY ALL INDICES 2006

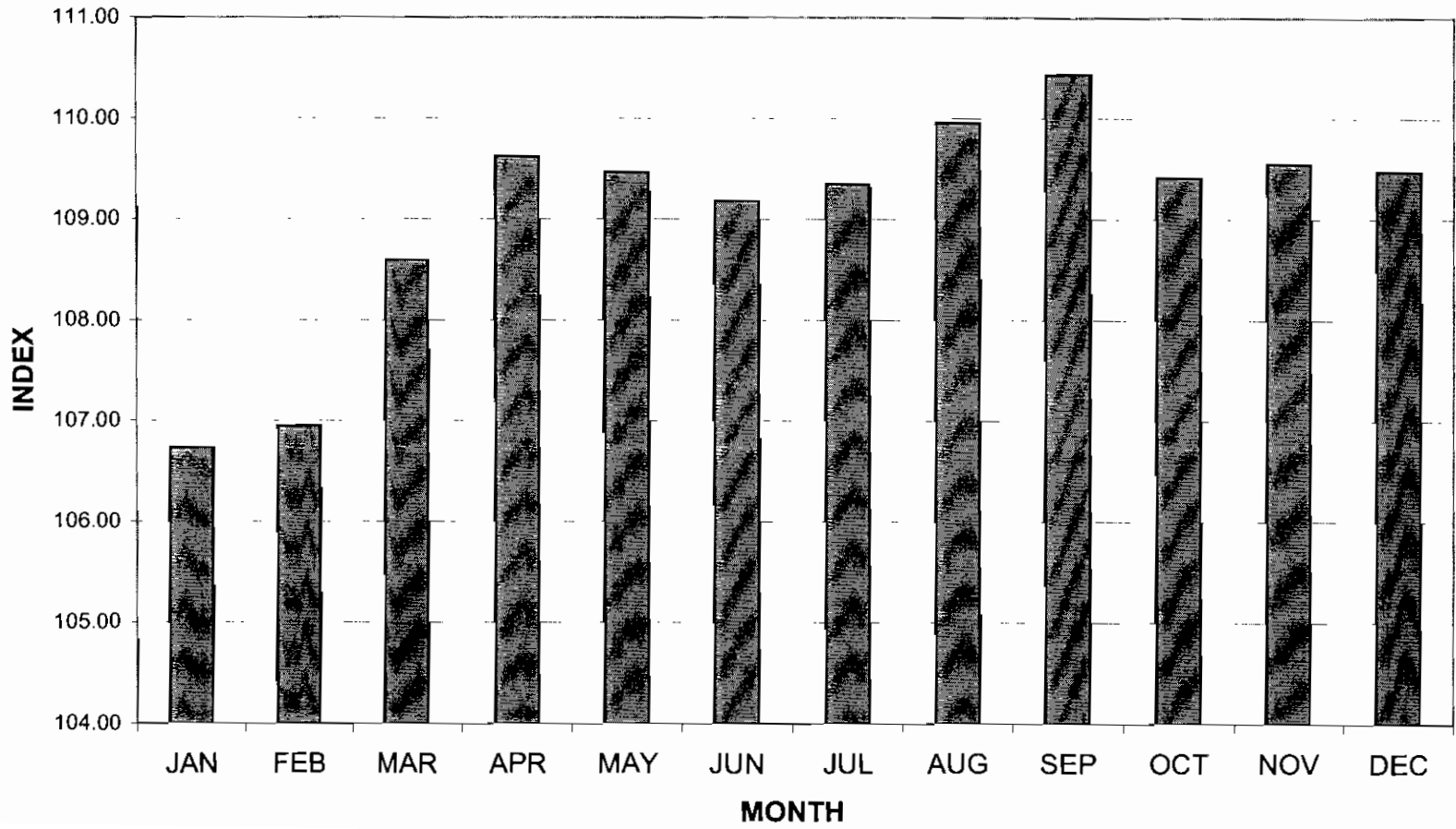


CHART 2

PERCENTAGE CHANGE IN ALL ITEMS INDICES 1995-2006

