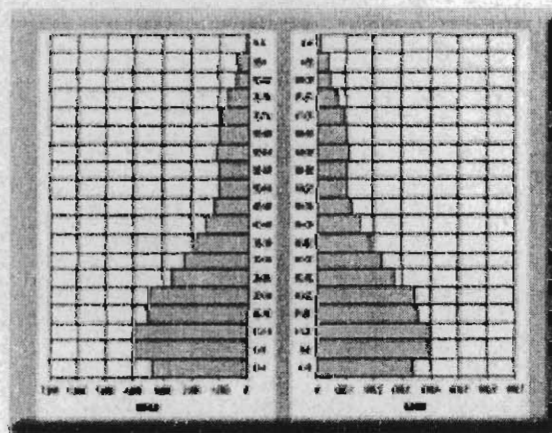




COMMONWEALTH OF DOMINICA

# DEMOGRAPHIC STATISTICS No. 4 2004



Central Statistical Office  
Ministry of Finance and Planning  
Kennedy Avenue  
Roseau  
Dominica

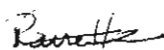


## **PREFACE**

This demographic report is the fourth published by the Central Statistical Office. This issue covers information from 1990 to 2003, presents census data for the last century and final data from the 2001 Population and Housing Census.

The report provides data on vital events – births, deaths, marriages and divorces – on fertility, disability, mortality, migration and household composition. It is intended to assist policy makers, planners, administrators, researchers, students and others interested in demographic trends related to Dominica.

The Central Statistical Office appreciates the cooperation of the Ministry of Health Statistical Unit, the Immigration Department, the Registry and its other sources in the collection of data. All suggestions from users and readers which can help us improve on future issues will be welcomed.

  
Prayma Carrette  
Chief Statistician

Central Statistical Office  
Ministry of Finance and Planning  
Tel: 1 767 4482401 Ext. 3400-3407  
Fax: 1 767 449-9128

Email: [csoda@cwldom.dn](mailto:csoda@cwldom.dn),



## CONTENTS

	<b>PAGE</b>
Preface	i
Contents	ii-iv
Map (Population Zones)	v
Map (Topography)	vi
Explanatory Notes	vii
Analysis	viii - xxii

## TABLES

1	Non-Institutional Population at Census Dates (1901 – 2001)	1
2	Non-Institutional Population, Births and Deaths by Sex At Census Years (1960 – 2001)	2
3	Non-Institutional Population by Sex and Five Year Age Groups (1970, 1981, 1991, and 2001)	3
4	Non-Institutional Population By Five Year Age Groups (1970, 1981, 1991 and 2001)	4
5	Population By Parishes (1946 – 2001)	5
6	Population Percentage Change and Intercensal Annual Rate of Change (1881 – 2001)	6
7	Population Density By Land Area – 2001 Census compared to 1991 Census	7
8	Births and Deaths by Sex (1990 – 2003)	8
9	Total Population Analysed by Births, Deaths and Net Migration (1990 – 2003)	9
10	Total Persons Moving into and out of the Population (1981 – 1990 and 1991 – 2000)	10
11	Mean Population and Vital Rates (1992 – 2003)	11
12	Number of Visas issued to Dominicans for entry into the United States Of America and the French Territories (1993 – 2003)	12

13	Total End of Year Population by Age Group (1993-2003)	13
14	Total End of Year Population by Sex and Age Group (1993 – 2003)	14-15
15	Total Births by Sex and Age Group of Mother (1993-2003)	16
16	Total Births by Age Group of Mother (1993-2003)	17
17	Total Births by Sex and Health Districts (1993-2003)	18
18	Age Specific Fertility Rates of Female Population 15-44 Years Not Attending School, 1981, 1991, and 2001 Census	19
19	Total Deaths by Age Group and Sex (1993-2003)	20
20	Total Deaths by Age Group (1993-2003)	21
21	Major Causes of Death (1993-2003)	22
21A	Major Causes of Death by Sex 2001 – 2003	22- 1
21B	Total Deaths by Major Causes 2001 – 2003	22- 2
22	Diseases of Major Public Health Importance – Cases Reported (1990 – 2003)	23
23	Population By Age Group, Sex and Type of Disability, 2001 Census	24
24	Population by Age Group, Sex and Chronic Illness, 2001 Census	25
25	Life Expectancy and Projections (1995-2010)	26
26	Number of Marriages by Age of Bride and Groom and Number of Divorces Filed (1990-2003)	27
27	Households and Average Household Size by Parish (1981, 1991 and 2001)	28

## CHARTS

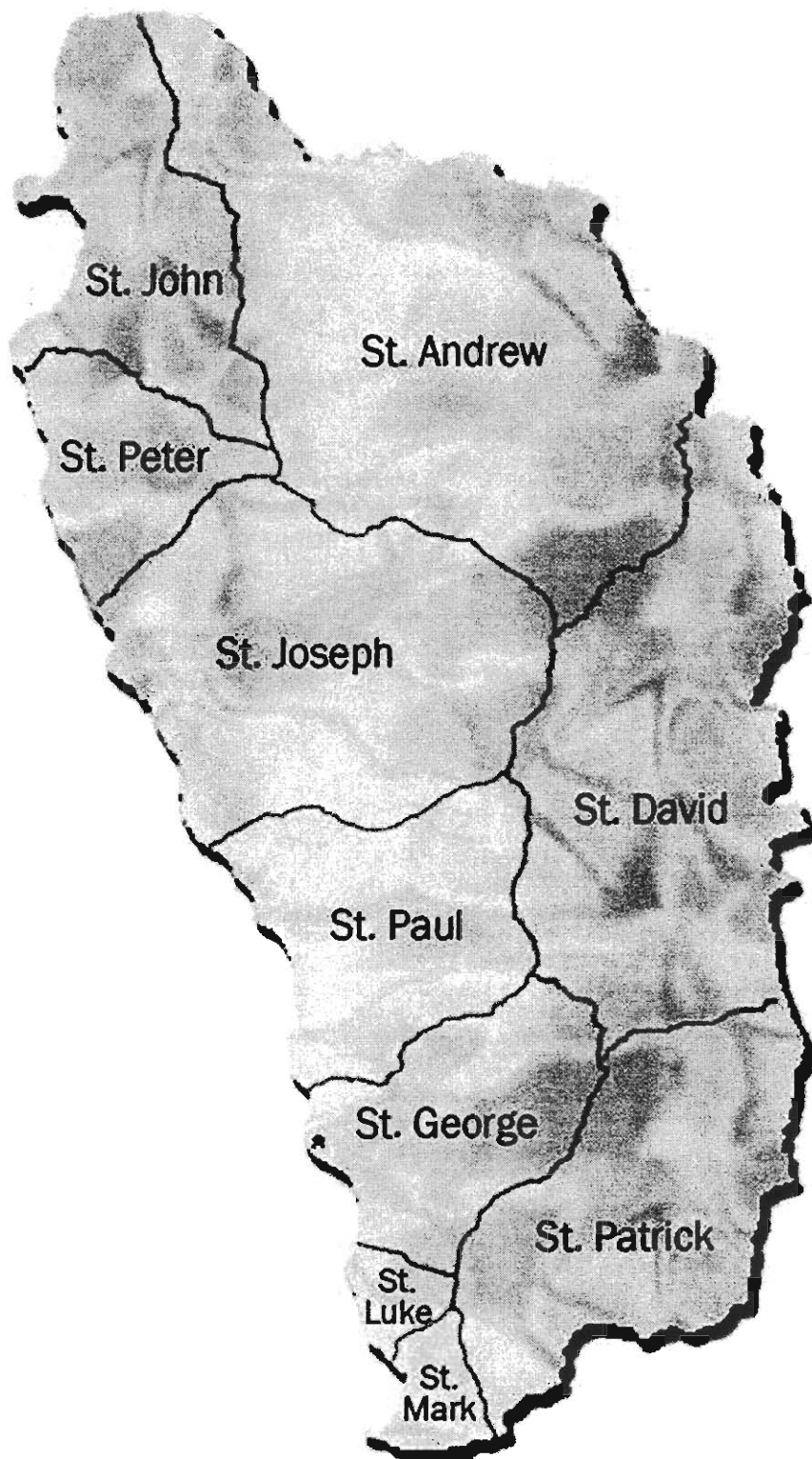
1	Non-Institutional Population at Census Years (1901-2001)	29
2	Intercensal Annual Rate of Change (1881-2001)	30
3	Vital Rates (1992 – 2003)	31

4	Population By Sex and Age Group, 2001 Census	32
5	End of Year and Mean Population (1993-2003)	33
6	Number of Marriages and Divorces (1990 – 2003)	34





# DOMINICA



Area: 751 km<sup>2</sup>

Central Statistical Office

# **GUADELOUPE CHANNEL**



# **MARTINIQUE CHANNEL**

## EXPLANATORY NOTES

Symbols and abbreviation used in this publication:

St. Saint for Parishes or Population Zones

M Males

F Females

T Total

... Not Available

% Percentage

- or 0 Nil or zero

Avg. Average

o/w of which

B Bride

G Groom

IMR Infant Mortality Rate

ASFR Age Specific Fertility Rate

H/hold Household

E Estimate

R Revised



# **DOMINICA**

## **DEMOGRAPHIC STATISTICS**

### **ANALYSIS**

#### **A Brief Description**

The island of the Commonwealth of Dominica is presently 751 square kilometers (298 square miles) and is situated between Latitude 15 40 North and Longitude 61 30 West. The island is in the Eastern Caribbean and is more suitably located between the French islands of Guadeloupe and Martinique. Dominica attained political independence from England in 1978. The official language is English. However, because of past French influence, a semi-French dialect (Creole) is widely spoken.

The topography is mountainous and the many rivers flowing from those peaks provide an ample supply of fresh water. The island is relatively quiet and popularly considered the appropriate hide-away from the hustle-bustle of life. The island is currently promoted and is in its developing stage as an eco-tourist destination. The political climate is based on a multi-party democracy.

Economically, a free-market is encouraged and for the 2001 to 2003 period the economy reflected negative growth. However the economy recovered by an estimated 3.0 percent growth in 2004. The Tourism, Construction, Manufacturing and Agriculture Sectors contributed significantly to this growth. For 2004 the Annual Consumer Price Index rose

by 2.46 percent with percentage increases in group indices Fuel and Light, 7.53; Housing and Utilities 4.68; Educational Expenses, 3.49 and Food, 2.80.

Visitor arrivals increased by 28% from 1993 to 2003, reaching a total arrival of 75,290 in 2003. The three major markets are the Caribbean, United States of America and Europe. Cruise lines call in regularly registering a record of 380,608 passengers in 2004.

Dominica consists of ten parishes (see map on page v) which are conveniently used for demographic and other analytical purposes. The capital city Roseau, is located within the parish of St. George in the south-west.

## **THE POPULATION OF DOMINICA**

Over the century (1901 – 2001) the population of Dominica moved from 26,841 in 1901 to 69,625 reflecting a 159.4 percent increase. The highest growth rate in any ten year period occurred between 1901 to 1911 (Table 6). After 1970, the rate of growth seemed to have slowed down. In fact, a negative annual growth of 0.4% was recorded for the period 1981-1991. According to the results of the 2001 Census, the population seemed to have dipped again, recording a negative average annual growth of 0.21%.

Over the last century (1901-2001) the parish of St. George, which includes the city of Roseau, has been the most populated region throughout that period. In 1901, St. Patrick, St. Andrew, St. Joseph and St. Paul also recorded high population concentration. However, in the 2001 Census the order was St. Andrew, St. Paul, St. Patrick, St. David and St. Joseph (Table 1).

## **2001 CENSUS**

The total population of Dominica as of May 12, 2001 numbered 69,625 recording a decrease of 1558 over the 1991 Census. In comparison to the 1991 Population Census only three (3) parishes seemed to have gained population; St. Paul with the largest increase, 902; St. John gained 337 and St. Luke only 19. All other parishes reflected population loss, the largest in St. Andrew with a loss of 866; St. George recorded a loss of 540; St. Patrick followed with a net loss of 546; St. Joseph registered a loss of 413; St. Mark 36 persons; St. Peter 191, and St. David 219.

The population distribution by parish or population zone indicates that the Parish of St. George (which includes the city of Roseau) records 28%, St. Andrew 15%, St. Patrick and St. Paul 12% each, St. David 10% and St. Joseph and St. John 8%. The largest population areas are Roseau with 14,539 persons, Portsmouth with 4012, Canefield 2,803; Marigot 2,676; Grand Bay – Berricoa, 2,288; Salisbury 2,129;

Mahaut 2,399; St. Joseph 2,029; Wesley 1756, Carib Territory, 1653 and Pointe Michel, 1576. Other areas which have already reached 1000 and more persons are as follows: Massacre, La Plaine, Castle Bruce, Atkinson, Calibishie, Soufriere and Woodford Hill.

## **AGE STRUCTURE**

The age structure of the population in 2001 revealed that the 20-59 age group accounted for the highest percentage of the population, 47.6 percent. The 0-19 followed recording 39.0 percent. However in comparison to 1991 the 0 -19 age group recorded the highest percentage, 45.2 percent; the 20 -59 age group followed closely, accounting for 43.3 percent. The 60 and over age-group increased steadily from 8.5 percent of the population in 1970 to 13.4 percent in 2001. The sex ratio in 1991 revealed a 993.3 indicating a population with a higher frequency of females than males (993 men to every 1000 females). However the trend took an opposite turn in the 2001 Census when results reflected a sex ratio of 1015.1 (1015 males to every 1000 females).

For both census periods, 1991 and 2001, higher percentages of males were recorded in age groups 0-19 and 20-59. In 1991 the male population in the 0-19 age group represented 23.0 percent while females registered 22.2 percent. In 2001 males recorded 19.7 percent while females accounted for 19.3 percent.



In 1991 males in the 20-59 age group registered 21.5 percent while females accounted for 21.1 percent. Similarly, in 2001, the male population in the 20-59 group recorded 24.7 percent while females represented 22.8 percent. In the 60 and over age group females accounted for a higher percentage of the population.

In 1991 the female population in the 60 and over age-group represented 6.5% in comparison to 5.0 percent of males. In the 2001 Census the female population in the 60 and over age-group recorded 7.5 percent in comparison to 5.9 percent of males.

## **POPULATION DENSITY**

Population density decreased slightly by 2.1 percent from 95 to 93 persons per square kilometer. St. George which comprises the city of Roseau registered the highest density with 353 persons per square kilometer. Other zones of concentration are St. Luke with 146; St. Mark, 144 persons; and St. Paul with 127 persons. The lowest density is registered in the parish of St. Peter with 43 persons per square kilometer.

St. Paul registered the highest percentage increase in density, 12.4. Other increases were recorded for St. John 7.1 and St. Luke 1.4. All other areas declined in density with St. Peter registering the largest percentage, decrease, 10.4 percent. The population zone of St. Andrew followed with an 8.1 percent drop.

## **BIRTH PATTERNS AND FERTILITY RATES**

Total births decline by 56.9% over the census years 1960 and 2001 (Table 2.) More recently from 1992 to 2003 total births reflected a steady decline (except for the years 1999 and 2001) registering a 42.5% decrease over that period.

Over the fourteen year period (1990-2003) births peaked in 1992 while the year 2003 registered the lowest number ever recorded in the island (Table 8). Consequently the birth rate reflected its highest, 25.6 in 1992 and its lowest 15.0 in 2003 (Table 11). The decreasing birth rate (from 1993) has been one of the contributory demographic processes to the steady decreases in the rate of natural increase and mean population (Table 11).

From 1990 to 1995, the 20-24 age group registered the highest number of births, as this group accounted for 30 to 33 percent of total births each year. From 1996 to 2001 an older age group, the 25-29 took over registering the highest number of births. Even more interestingly, in the last two years 2002 and 2003 an older age-group 30-34 attained this position recording the highest number of births.

Until 1990, the second highest reproductive age-group was 15 to 19 (Table 17, Demographic Statistics, No. 2, 1996). This pattern was however broken from 1991 when an older age-group, the 25-29, seemed to have attained the second highest position until 1995. From 1996 to 1999, the 20-24 group attained the second highest position.

However from 2000 the reproductive position of that age- group has not registered a clear pattern among the three most productive age-group.

Over the last three decades the reproductive patterns were as follows: the 15-19 age groups recorded the highest births up to 1984; from 1985 to 1995, the 20-24 age group obtained that position and from 1996 to 2001 an older age-group, 25-29 recorded the highest number of births. From 2002 to present an even older age-group 30-34 attained this position. These demographic processes have resulted in a steady increase in the mean age of childbearing from 26.5 years in 1981 to 27.8 in 2001.

Together these two groups, 20-24 and 25-29 accounted for 46% to 56% of all births. Births to teen mothers decreased sharply by 41.4 percent over the last ten years. Conversely, the percentage of births by the oldest child-bearing age-group, 40 to 49 rose steadily from 1989 to a current record in 2003. In 2003, this age-group accounted for 5.1 percent of all births.

For health services, Dominica consists of seven health districts. Most health districts, however, serve more than one parish or population zone.

Over the last years, most births (about 42% to 47% of total births) occurred in Roseau Health District, the largest, serving four parishes/regions. Except for the years 1993 and 1999 the Portsmouth Health District (serving the north) followed as the second most reproductive district (Table 17). It is interesting to note that from 1987 to 1991, the

Grand Bay district (serving the south) continually recorded a higher number of female births as compared to male births (Table 19 of Demographic Statistics No. 2/1996).

However a reverse trend was recognized from 1992 to 1999 (except for a slight difference in 1995). From 2000 to present female births again outnumbered male births in that district.

## **FERTILITY PATTERNS**

For the 1981, 1991, and 2001 censuses the age specific fertility rates revealed shifts in Dominica's fertility pattern.

The total fertility rate recorded a drop, over the 1981 and 1991 period, moving from 4.2 in 1981 to 3.0 in 1991 but indicated a stable pattern of 3.0 up to 2001. Accordingly in 1981, the 20-24 age-group was the most reproductive but in the 1991 census this reproductive position as revealed by the age-specific rate, shifted to an older age-group, the 25 to 29 (Table 18). In 2001 this age-group, 25-29, retained its position as the most reproductive. Over the last three census periods decreases in fertility rates were registered in all age-group except the 40-44, the oldest reproductive group. Over the last two census periods 1991 and 2001 the 35-39 age group recorded an increased rate.

The decline in teenage fertility closely corresponds to the steady decline in births to teenage mothers. From 1980 to 1990, the years before the censuses, teenage pregnancies

decreased by 27.8 percent (Table 16 and Demographic Statistics No. 1. 1993) while in a more recent period, in year 2000, a 25.2 percent decline in births was recorded over 1990. The stagnation in the present total fertility rate and the decline from the 1981 level is mainly attributed to the downward movements in the number of births coupled with the effects of migration. According to the 1991 and 1981 Census, in spite of a 4.5 percent increase in the number of women within the child-bearing age, their age specific fertility rate over the period moved from 158.3 to 108.2, as lower births were recorded during that period (Table 18).

The mean age at child-bearing increased from 26.5 to 27.2 years for that period (1981 to 1991). In 2001 the trend was reversed as the child-bearing population decreased by 3.4 percent. Births also fell, reflecting a 10.2 percent decrease over the last census period. These dual processes reduced the age specific fertility rate to 100.6 in 2001. The mean age at child-bearing increased to an older age, 27.8 years.

## **DEATHS**

Over the census years 1960 to 2001 total deaths decreased by 44.6 percent (Table 2). For the last ten years (1993 to 2003) total deaths almost remained stable decreasing slightly by 0.7 percent. The highest occurrence, 618 deaths, was recorded in 1999. In 2003 deaths among the senior population (those 65 and over) registered 68.4 percent. In 2002 just about the same percentage, 68.0, was recorded.

Most deaths occurred in the 85 and over age-group (Table 20). It was further observed that more females compared to males, died at the age of 80 and over, while a higher occurrence of male deaths were at an earlier age, for example, the 70-74 age- group (Table 19). Throughout the period, 1990 to 1997, most deaths resulted from diseases of the circulatory system which accounted for 16.1 to 20.5 percent of all deaths. However, from 1998 Neoplasms has been recorded as the main cause of death, accounting for 19.2 to 21.7 percent of all deaths. In the last three years diseases of the circulatory system emerged as the second most fatal disease registering 19.5 percent of deaths in 2002 and 17.5 percent in 2003. Hypertension was the third leading cause, accounting for 15.5 percent of deaths in 2003. These three fatal diseases (Neoplasm, circulatory diseases and hypertension) have accounted for 50 to 55 percent of all deaths.

In the last three years the two leading causes of deaths among men were hypertension disease and malignant neoplasms of prostate. Hypertensive accounted for 9.4 to 14.2 percent of deaths while malignant neoplasms of prostate recorded 8.0 to 12.7 percent for the period. Among women the leading causes were hypertensive diseases and diabetes. Hypertensive accounted for 18.5 percent of female deaths while diabetes recorded 7.0 percent to 12.0 percent for the period.

Infant deaths registered a total of 20 in 2003, increasing by 66.7 percent over the last year and reflecting a rate of 18.9. However, a rate of 11.1, a record low, was registered in 2002 with 12 infant deaths (tables 11 and 20).

According to health records, slow fetal growth and low birth weight, the main cause of infant deaths in 2003, accounted for 50.0 percent of infant deaths. Respiratory disorders specific to the perinatal period accounted for 21.4 percent of infant deaths.

## **Migration**

According to the results of the 2001 census taken on 12 May 2001, the non-institutional population of Dominica numbered 69,625. Over the last five census years (Table 2) the 1960 period recorded the highest number of emigrants, while 1981 registered an inflow. The common destination at that period (1960) was the United Kingdom, England in particular. The exodus waned throughout the years until the early 1980's. This movement was however changed in 1983, when a record mass exodus, 2392, exceeded that of 1960 (Table 2 and Demographic Statistics, No. 1, 1993). From 1983 to 1989 out-migration appeared to be an uncontrolled "force", negatively affecting the total increase, and consequently the end of year population. The outflow had its greatest impact in 1989 (recording an outflow of 2355), when total increase reached its lowest (Table 9 Demographic Statistics, No. 2, 1996).

Destinations became varied as Dominicans looked at more favoured economies. Other Caribbean islands and the U.S.A. then become popular choices. The total number of visas issued to Dominicans for entry into the United States accounted for 7.0 percent of the mean population in 1989 (Table 12 and Demographic Statistics, No. 2, 1996).

For the last five years the number of entrants to the French territories reached a peak in 2001 accounting for 12.4 percent of the mean population. It must be noted that a significant number of those visas were issued to persons involved in the long-established island to island sea-borne trade, locally known as the “huckster” trade. Those traders have accounted for about 45 to 50 percent of entrants to the French territories and are not migrants.

Over the last census periods (1991-2000) the population of Dominica recorded a net outflow of 8,866 persons. From 1996 the end of year population has been decreasing steadily. Over the years, net migration continually recorded an outflow, negatively affecting total increase from 1996. Consequently, the end of year population has been declining since that period. It has been observed that high levels of migration is triggered after a natural disaster particularly hurricanes. Such phenomena can create counter movements of migration. The after-math of such natural phenomena creates an attractive labor market in countries of the Region as was noticed after the hurricanes of 1995. Skilled workers migrated in search of employment thus creating a population outflow.

The most popular migrant destination have been other Caribbean countries and the United States. According to the last population census of Antigua and Barbuda, the Dominica population in Antigua and Barbuda numbered 3,911 representing 5.2 percent of Antigua’s population and 5.6 percent of the present mean population of Dominica.



In the British Virgin Islands (BVI) Census the Dominican population registered 683 representing 3.0 percent of the BVI's population.

From 1993 to 2002 the United States Embassy issued a total of 4,704 immigrant visa granting resident status to Dominicans. This represented 6.7 percent of Dominica's mean population in 2002. The population has been subjected to the forces or processes of out-migration. In addition to the effects of natural disasters, population outflows have been associated with the implementation of medium and long-term policies that may affect a people's socio-economic standing. A recessionary period may also contribute to high outflows. The population outflow has negatively affected total increase since 1996. However over the last two years the impact has been significantly lessened with the lowest outflow, 23, recorded in 2003.

For a relatively small population outflow may subside with economic growth and absence of severe natural disasters. These two factors along with the occurrence of increased birth rates will stimulate population growth.

### **Marriages and Divorces**

Over the last ten years (1993-2003) total marriages registered its highest 339, in 1999 (Table 26). Except for the years 2000 and 2002 most brides were from the 25 to 29 age-group, interestingly corresponding to the group with the highest fertility rate. Except for the years 1994 and 1997 most grooms fell in an older age-group, the 30-34.

From the ages 15 to 29, brides consistently outnumbered grooms but for the ages 30 and over grooms constantly recorded higher numbers in comparison to brides, revealing that most men wed at a later age.

Divorces filed increased significantly by 12.0 percent over the last ten years (1993 - 2003).

### **HOUSEHOLD AND HOUSEHOLD SIZE**

The total number of households increased by 10.9 from 1991-2001 (the last two census years). Of the ten parishes, St. John, and St. Paul registered the highest increase of 31.2 each. This was followed by St. Luke and St. David recording increases of 11.1 percent each. St. Mark reflected a 9.8 percent rise. The parish of St. George, which comprises the City and its environs, registered an increase of 6.7 percent in total households, in contrast to a 2.6 percent decline in population (Tables 5, and 27). St. Peter recorded a 1.1 percent decline.

Over the period, all parishes continued to reflect reductions in average household size. The double effects of migration and increases in number of households contributed to that decline. According to the 2001 census, St. Peter and St. Joseph recorded the smallest household size, 2.7 while the largest 3.5 was registered in St. David a position maintained over the last three censuses.

## SUMMARY

The main and most reliable source of information on population is a census. In this report, total population counts were taken and based on censuses. Since the population is relatively small, the end of year populations were basically derived from the components of total increase (births, deaths and net migration) using the most recent census as base, with the number of vital events after the census date taken into account to adjust the end of year population for 2001. According to the results of the last census (2001) the population numbered 69625 thus reflecting a slight negative growth of 2.19 over the last ten years (1991-2001). It was not a first-time low as negative growth was recorded in 1891 and 1991 (Table 6). From 1993 to 2003 the mean population declined by an estimated 2.4%. The interacting processes of a decreasing birth rate and an uncontrolled high migration have triggered slow growth for Dominica's population. In the last ten years a total of 14903 births have been added to the population compared to the previous decade's 17031. For the last decade 5568 deaths and 8966 emigrants have together removed a total of 14534 persons, adding a net of just about 369 persons to the population over the period (Table 10).

The mean population is estimated at 70352 with future assumptions pinning on two scenarios: that if current demographic processes as low births, medium to current stable migration and stable death rate continue, the population is expected to attain slow growth reaching an estimated 71127 by year 2010; or if births increase steadily (even though minimally) and migration wanes or births remain stable but migration outflows are abated, population growth will be achieved to levels above 71,500.



**TABLE 1. NON-INSTITUTIONAL POPULATION AT CENSUS DATES  
1901 - 2001**

	<b>1901</b> <b>1st April</b>	<b>1911</b> <b>3rd April</b>	<b>1921</b> <b>24th April</b>	<b>1946</b> <b>9th April</b>	<b>1960</b> <b>7th April</b>	<b>1970</b> <b>7th April</b>	<b>1981</b> <b>7th April</b>	<b>1991</b> <b>12th April</b>	<b>2001</b> <b>12th May</b>
<b>TOTAL</b>	<b>28,894</b>	<b>33,863</b>	<b>37,059</b>	<b>47,624</b>	<b>59,916</b>	<b>69,548</b>	<b>73,795</b>	<b>71,183</b>	<b>69,625</b>
<b>MALE</b>	12,870	15,231	16,760	22,277	28,167	32,967	36,754	35,471	35,073
<b>FEMALE</b>	16,024	18,632	20,299	25,347	31,749	36,581	37,041	35,712	34,552
<b>TOTAL POPULATION BY PARISHES</b>									
<b>St George</b>	8,068	8,941	9,988	12,382	16,545	19,470	20,501	20,365	19,825
<b>City of Roseau</b>	5,764	6,577	6,803	9,752	10,417	9,949	8,346	15,853	14,539
<b>Rest of St George</b>	2,304	2,364	3,185	2,630	6,128	9,521	12,155	4,512	5,286
<b>St John</b>	2,568	3,359	2,958	3,600	4,658	5,226	5,412	4,990	5,327
<b>St Peter</b>	1,285	1,345	1,377	1,719	1,702	1,701	1,601	1,643	1,452
<b>St Joseph</b>	2,682	3,287	3,152	4,205	5,507	6,362	6,606	6,183	5,765
<b>St Paul</b>	1,674	1,954	2,367	2,939	4,156	4,456	6,386	7,495	8,397
<b>St Luke</b>	1,278	1,355	1,473	1,606	1,886	1,633	1,503	1,552	1,571
<b>St Mark</b>	1,361	1,509	1,668	1,980	1,936	1,961	1,921	1,943	1,907
<b>St Patrick</b>	4,719	5,809	6,663	8,057	8,880	10,095	9,780	8,929	8,383
<b>St David</b>	1,611	2,108	2,574	4,127	5,210	6,707	7,337	6,977	6,758
<b>St Andrew</b>	3,648	4,196	4,839	7,009	9,436	11,937	12,748	11,106	10,240
<b>TOTAL</b>	<b>28,894</b>	<b>33,863</b>	<b>37,059</b>	<b>47,624</b>	<b>59,916</b>	<b>69,548</b>	<b>73,795</b>	<b>71,183</b>	<b>69,625</b>

Source: Reports of the Dominica Census and the Census of the Windward Islands 1946 and 1960 and Reports of the Dominica Censuses 1970, 1981, 1991 and 2001

From 1991 Census, the City of Roseau includes Fond Cole, Goodwill, St Aroment, Bath Estate and Elmshall.

**TABLE 2. NON-INSTITUTIONAL POPULATION, BIRTHS AND DEATHS BY SEX AT CENSUS YEARS  
1960-2001**

YEAR	NON-INSTITUTIONAL POPULATION			BIRTHS				DEATHS				NET MIGRATION
	MALE	FEMALE	TOTAL	MALE	FEMALE	SEX NOT STATED	TOTAL	MALE	FEMALE	SEX NOT STATED	TOTAL	
1960	28,167	31,749	59,916	...	...	...	2,820	...	...	...	920	-2,160
1970	32,968	36,581	69,549	1,212	1,288	3	2,503	...	...	...	583	-165
1981	36,754	37,041	73,795	822	833	6	1,661	185	155	...	340	1,902
1991	35,471	35,712	71,183	858	854	....	1,712	248	270	....	518	-892
2001	35,073	34,552	69,625	613	603	.....	1,216	260	250	.....	510	-897

Source: Ministry of Health

Registrar General's Office and Police Department

Report of the 1970, 1981, 1991 and 2001 Population Censuses.

**TABLE 3. NON-INSTITUTIONAL POPULATION BY SEX AND FIVE YEAR AGE GROUP  
1970, 1981, 1991, 2001**

AGE GROUP	1970			1981			1991			2001		
	MALE	FEMALE	TOTAL	MALE	FEMALE	TOTAL	MALE	FEMALE	TOTAL	MALE	FEMALE	TOTAL
0-4	6,223	6,278	12,501	4,202	3,994	8,196	3,820	3,891	7,711	3,059	3,028	6,087
5-9	5,951	5,886	11,837	5,277	4,850	10,127	4,398	4,285	8,683	3,770	3,507	7,277
10-14	5,030	4,750	9,780	5,595	5,488	11,083	3,937	4,107	8,044	3,395	3,452	6,847
15-19	3,235	3,563	6,798	4,779	4,611	9,390	4,221	3,535	7,756	3,293	3,277	6,570
20-24	2,269	2,599	4,868	3,722	3,286	7,008	3,290	3,338	6,628	2,326	2,083	4,409
25-29	1,392	1,718	3,110	2,521	2,190	4,711	2,943	2,702	5,645	2,481	2,453	4,934
30-34	1,123	1,492	2,615	1,764	1,755	3,519	2,461	2,239	4,700	2,753	2,703	5,456
35-39	1,139	1,527	2,666	1,404	1,416	2,820	1,934	1,759	3,693	2,710	2,390	5,100
40-44	1,132	1,354	2,486	1,133	1,328	2,461	1,508	1,441	2,949	2,306	2,004	4,310
45-49	1,069	1,345	2,414	1,058	1,292	2,350	1,241	1,249	2,490	1,857	1,571	3,428
50-54	1,097	1,374	2,471	1,051	1,311	2,362	980	1,136	2,116	1,400	1,317	2,717
55-59	911	1,168	2,079	950	1,097	2,047	925	1,192	2,117	1,153	1,150	2,303
60-64	848	975	1,823	959	1,190	2,149	967	1,130	2,097	975	1,200	2,175
65-69	601	925	1,526	850	962	1,812	862	1,025	1,887	1,041	1,200	2,241
70-74	406	642	1,048	611	872	1,483	698	886	1,584	831	947	1,778
75-79	257	390	647	383	584	967	546	654	1,200	568	717	1,285
80-84	171	299	470	191	357	548	285	496	781	347	548	895
85+	114	296	410	149	332	481	213	415	628	284	539	823
N.S.	0	0	0	155	126	281	242	232	474	0	0	0
TOTAL	32,968	36,581	69,549	36,754	37,041	73,795	35,471	35,712	71,183	34,549	34,086	68,635

Source: Population Censuses of 1970, 1981, 1991 and 2001

Note: Tabulated data for 2001

**TABLE 4. NON-INSTITUTIONAL POPULATION BY FIVE YEAR AGE GROUPS  
1970,1981,1991, 2001**

<b>AGE GROUP</b>	<b>1970</b>	<b>% of TOTAL</b>	<b>1981</b>	<b>% of TOTAL</b>	<b>1991</b>	<b>% of TOTAL</b>	<b>2001</b>	<b>% of TOTAL</b>
<b>0-4</b>	12,501	18.0	8,196	11.1	7,711	10.8	6,087	8.9
<b>5-9</b>	11,837	17.0	10,127	13.7	8,683	12.2	7,277	10.6
<b>10-14</b>	9,780	14.1	11,083	15.0	8,044	11.3	6,847	10.0
<b>15-19</b>	6,798	9.8	9,390	12.7	7,756	10.9	6,570	9.6
<b>20-24</b>	4,868	7.0	7,008	9.5	6,628	9.3	4,409	6.4
<b>25-29</b>	3,110	4.5	4,711	6.4	5,645	7.9	4,934	7.2
<b>30-34</b>	2,615	3.8	3,519	4.8	4,700	6.6	5,456	7.9
<b>35-39</b>	2,666	3.8	2,820	3.8	3,693	5.2	5,100	7.4
<b>40-44</b>	2,486	3.6	2,461	3.3	2,949	4.1	4,310	6.3
<b>45-49</b>	2,414	3.5	2,350	3.2	2,490	3.5	3,428	5.0
<b>50-54</b>	2,471	3.6	2,362	3.2	2,116	3.0	2,717	4.0
<b>55-59</b>	2,079	3.0	2,047	2.8	2,117	3.0	2,303	3.4
<b>60-64</b>	1,823	2.6	2,149	2.9	2,097	2.9	2,175	3.2
<b>65-69</b>	1,526	2.2	1,812	2.5	1,887	2.7	2,241	3.3
<b>70-74</b>	1,048	1.5	1,483	2.0	1,584	2.2	1,778	2.6
<b>75-79</b>	647	0.9	967	1.3	1,200	1.7	1,285	1.9
<b>80-84</b>	470	0.7	548	0.7	781	1.1	895	1.3
<b>85+</b>	410	0.6	481	0.7	628	0.9	823	1.2
<b>N.S.</b>	0	0.0	281	0.4	474	0.7	0	0.0
<b>TOTAL</b>	<b>69,549</b>	<b>100.0</b>	<b>73,795</b>	<b>100.0</b>	<b>71,183</b>	<b>100.0</b>	<b>68,635</b>	<b>100.0</b>

Source: Population Censuses of 1970,1981, 1991 and 2001

Note: Tabulated data for 2001



**TABLE 5. POPULATION BY PARISHES  
1946 - 2001**

<b>PARISHES</b>	<b>1946</b>	<b>1960</b>	<b>1970</b>	<b>1981</b>	<b>1991</b>	<b>2001</b>	<b>% CHANGE 1991- 2001</b>	<b>% CHANGE 1946- 2001</b>
<b>St George</b>	12,382	16,545	19,470	20,501	20,365	19,825	-2.65	60.11
<b>City of Roseau</b>	9,752	10,417	9,949	8,279	15,853	14,539	-8.29	49.09
<b>Rest of St George</b>	2,630	6,128	9,521	12,222	4,512	5,286	17.15	100.99
<b>St John</b>	3,600	4,658	5,227	5,412	4,990	5,327	6.75	47.97
<b>St Peter</b>	1,719	1,702	1,701	1,601	1,643	1,452	-11.63	-15.53
<b>St Joseph</b>	4,205	5,507	6,362	6,606	6,183	5,765	-6.76	37.10
<b>St Paul</b>	2,939	4,156	4,456	6,386	7,495	8,397	12.03	185.71
<b>St Luke</b>	1,606	1,590	1,633	1,503	1,552	1,571	1.22	-2.18
<b>St Mark</b>	1,980	1,936	1,961	1,921	1,943	1,907	-1.85	-3.69
<b>St Patrick</b>	8,057	8,880	10,095	9,780	8,929	8,383	-6.11	4.05
<b>St David</b>	4,127	5,210	6,706	7,337	6,977	6,758	-3.14	63.75
<b>St Andrew</b>	7,009	9,732	11,937	12,748	11,106	10,240	-7.80	46.10
<b>DOMINICA</b>	<b>47,624</b>	<b>59,916</b>	<b>69,548</b>	<b>73,795</b>	<b>71,183</b>	<b>69,625</b>	-2.19	46.20

Source: Reports of the Dominica Census and the Census of the Windward Islands for 1946, 1980-1981 Population Census of the Commonwealth of Dominica, Volume 3, 1991 and 2001 Population and Housing Census.

Note: % change is not equal to growth rate.

From 1991 Census the City of Roseau includes Fond Cole, Goodwill, St. Aroment, Bath Estate and Elmshall

**TABLE 6. POPULATION PERCENTAGE CHANGE AND  
INTERCENSAL ANNUAL RATE OF CHANGE  
1881- 2001**

<b>YEAR</b>	<b>POPULATION</b>	<b>PERCENTAGE CHANGE</b>	<b>INTERCENSAL ANNUAL RATE OF CHANGE</b>
<b>1881</b>	28,211	3.80	0.37
<b>1891</b>	26,841	-4.86	-0.48
<b>1901</b>	28,894	7.65	0.72
<b>1911</b>	33,863	17.20	1.62
<b>1921</b>	37,059	9.44	0.9
<b>1946</b>	47,624	28.51	1.01
<b>1960</b>	59,916	25.81	1.65
<b>1970</b>	69,549	16.08	1.48
<b>1981</b>	73,795	6.11	0.55
<b>1991</b>	71,183	-3.50	-0.37
<b>2001</b>	69,625	-2.19	-0.21

Source: Reports of the Dominica Census and the Census of the Windward Islands 1946 and 1960. Reports of the 1970, 1981, 1991 and 2001 Censuses.

**TABLE 7. POPULATION DENSITY BY LAND AREA  
2001 COMPARED TO 1991 CENSUS.**

PARISH	LAND AREA (Km)	2001		1991	
		POPULATION	DENSITY	POPULATION	DENSITY
<b>St George</b>	56.2	19,825	353	20,365	362
<b>St John</b>	59.1	5,327	90	4,990	84
<b>St Peter</b>	34.2	1,452	43	1,643	48
<b>St Joseph</b>	118.4	5,765	49	6,183	52
<b>St Paul</b>	66.4	8,397	127	7,495	113
<b>St Luke</b>	10.8	1,571	146	1,552	144
<b>St Mark</b>	13.5	1,907	141	1,943	144
<b>St Patrick</b>	86.7	8,383	97	8,929	103
<b>St David</b>	125.8	6,758	54	6,977	55
<b>St Andrew</b>	179.9	10,240	57	11,106	62
<b>Dominica</b>	<b>751.0</b>	<b>69,625</b>	<b>93</b>	<b>71,183</b>	<b>95</b>

Sources: 1991 and 2001 Population and Housing Censuses

**TABLE 8. BIRTHS AND DEATHS BY SEX  
1990 - 2003**

YEAR	BIRTHS			SEX RATIO AT BIRTH	DEATHS		
	MALE	FEMALE	TOTAL		MALE	FEMALE	TOTAL
1990	814	790	1,604	1,030.4	247	265	512
1991	858	854	1,712	1,004.7	248	270	518
1992	935	901	1,836	1,037.7	293	273	566
1993	908	849	1,757	1,069.5	289	269	558
1994	826	779	1,605	1,060.3	261	269	530
1995	752	749	1,501	1,004.0	293	291	584
1996	709	717	1,426	988.8	303	280	583
1997	678	662	1,340	1,024.2	255	258	513
1998	638	598	1,236	1,066.9	330	265	595
1999	642	651	1,293	986.2	323	295	618
2000	616	583	1,199	1,056.6	258	253	511
2001	613	603	1,216	1,016.6	260	250	510
2002	491	590	1,081	832.2	308	286	594
2003	543	513	1,056	1,058.5	297	260	557

Source: Ministry of Health and Central Statistical Office.

**TABLE 9. TOTAL POPULATION ANALYSED BY BIRTHS, DEATHS AND  
NET MIGRATION 1990 - 2003**

<b>YEAR</b>	<b>BIRTHS</b>	<b>DEATHS</b>	<b>NATURAL INCREASE</b>	<b>NET MIGRATION</b>	<b>TOTAL INCREASE</b>	<b>END OF YEAR POPULATION</b>	<b>MEAN POPULATION</b>
<b>1990</b>	1,604	512	1,092	-981	111	71,568	71,513
<b>1991</b>	1,712	518	1,194	-895	299	71,373	71,471
<b>1992</b>	1,836	566	1,270	-707	563	71,936	71,654
<b>1993</b>	1,757	558	1,199	-802	397	72,333	72,134
<b>1994</b>	1,605	530	1,075	-914	161	72,494	72,413
<b>1995</b>	1,501	584	917	-699	218	72,712	72,603
<b>1996</b>	1,426	583	843	-1,288	-445	72,267	72,490
<b>1997</b>	1,340	513	827	-995	-168	72,099	72,183
<b>1998</b>	1,236	595	641	-756	-115	71,984	72,042
<b>1999</b>	1,293	618	675	-1,013	-338	71,646	71,815
<b>2000</b>	1,199	511	688	-897	-209	71,443	71,544
<b>2001</b>	1,216	510	703	-894	-191	70,401	70,922
<b>2002</b>	1,081	594	487	-526	-39	70,362	70,382
<b>2003</b>	1,056	557	499	-522	-23	70,340	70,352

Source: Ministry of Health, Immigration Department and Central Statistical Office

For 2001 End of Year Population is adjusted from Census data to include births, deaths and net migration after the May 07, 2001 Census date

**TABLE 10. TOTAL PERSONS MOVING INTO AND OUT OF THE POPULATION  
1981 - 1990 AND 1991 - 2000**

PERIOD	BIRTHS	DEATHS	NATURAL INCREASE	NET MIGRATION	NET INCREASE
1981 - 1990	17,031	4,377	12,654	-12,081	573
1991 - 2000	14,903	5,568	9,335	-8,966	369
AVERAGE PER YEAR FOR PERIOD:					
1981 - 1990	1,703	438	1,265	-1,208	57
1991 - 2000	1,490	557	934	-897	37

Source: Central Statistical Office

**TABLE 11. MEAN POPULATION AND VITAL RATES  
1992 - 2003**

<b>YEAR</b>	<b>MEAN POPULATION (1)</b>	<b>BIRTH RATE (2)</b>	<b>DEATH RATE (2)</b>	<b>RATE OF NATURAL INCREASE (3)</b>	<b>INFANT MORTALITY RATE (4)</b>
<b>1992</b>	71,654	25.6	7.9	17.7	14.2
<b>1993</b>	72,134	24.4	7.7	16.6	14.2
<b>1994</b>	72,413	22.2	7.3	14.8	22.5
<b>1995</b>	72,603	20.7	8.0	12.6	16.0
<b>1996</b>	72,490	19.7	8.0	11.6	16.9
<b>1997</b>	72,183	18.6	7.1	11.5	16.4
<b>1998</b>	72,042	17.2	8.3	8.9	14.6
<b>1999</b>	71,814	18.0	8.6	9.4	23.2
<b>2000</b>	71,544	16.8	7.1	9.6	17.5
<b>2001</b>	70,922	17.1	7.2	10.0	19.8
<b>2002</b>	70,382	15.4	8.4	6.9	11.1
<b>2003</b>	70,352	15.0	7.9	7.1	18.9

Source: Central Statistical Office

Note: 1. Average of two end of year population that of the previous year and the year under review  
 2. Per thousand of mean population  
 3. Birth rate minus death rate  
 4. Death in first year of life per 1000 live births

**TABLE 12. NUMBER OF VISAS ISSUED TO DOMINICANS FOR ENTRY INTO THE UNITED STATES OF AMERICA AND THE FRENCH TERRITORIES**

**1993 - 2003**

YEAR	UNITED STATES OF AMERICA VISAS				FRENCH TERRITORIES VISAS			
	IMMIGRANT	NON-IMMIGRANT	TOTAL VISAS ISSUED	VISAS ISSUED AS % OF MEAN POPULATION	VISAS FOR HUCKSTER TRADE	OTHER VISAS	TOTAL VISAS ISSUED	VISAS ISSUED AS % OF MEAN POPULATION
1993	535	2,810	3,345	4.6	2,008	2,175	4,183	5.80
1994	391	1,804	2,195	3.0	2,991	3,114	6,105	8.43
1995	467	1,876	2,343	3.2	2,820	2,935	5,755	7.93
1996	432	1,761	2,193	3.0	...	...	...	...
1997	445	2,472	2,917	4.0	...	...	3,135	...
1998	508	3,062	3,570	5.0	...	...	6,157	8.55
1999	568	4,226	4,794	6.7	...	...	7,333	10.21
2000	501	2,817	3,318	4.6	...	...	8,628	12.02
2001	466	2,002	2,468	3.5	...	...	8,890	12.43
2002	391	1,419	1,810	2.6	...	...	8,607	12.23
2003	...	1,821	...	...	...	...	7,328	10.42

Source: Embassy of the United States of America- Barbados,  
The French Consul, Roseau,  
Central Statistical Office.

Note: The 1997 data on French visas represents information from June to December.



**TABLE 13. TOTAL END OF YEAR POPULATION BY AGE GROUP**  
**1993 - 2003**

AGE GROUP	1993	% OF TOTAL	1994	% OF TOTAL	1995	% OF TOTAL	1996	% OF TOTAL	1997	% OF TOTAL	1998	% OF TOTAL	1999	% OF TOTAL	2000	% OF TOTAL	2001	% OF TOTAL	2002	% OF TOTAL	2003	% OF TOTAL
0-4	8,318	11.5	8,261	11.4	8,281	11.4	8,220	11.4	7,805	10.8	7,702	10.7	7,028	9.8	6,929	9.7	6,244	8.9	6,355	9.0	6,130	8.7
5-9	8,535	11.8	8,408	11.6	8,358	11.5	8,360	11.6	8,167	11.3	8,262	11.5	8,174	11.4	8,143	11.4	7,464	10.6	7,494	10.7	7,402	10.5
10-14	8,174	11.3	8,116	11.2	8,137	11.2	8,154	11.3	8,025	11.1	8,126	11.3	8,102	11.3	8,072	11.3	7,023	10.0	6,998	9.9	6,953	9.9
15-19	7,812	10.8	7,753	10.7	7,700	10.6	7,564	10.5	7,736	10.7	7,542	10.5	7,386	10.3	7,357	10.3	6,739	9.6	6,689	9.5	6,727	9.6
20-24	6,655	9.2	6,593	9.1	6,682	9.2	6,637	9.2	6,864	9.5	6,891	9.6	7,099	9.9	7,072	9.9	4,523	6.4	4,460	6.3	4,527	6.4
25-29	5,859	8.1	5,795	8.0	5,886	8.1	5,832	8.1	5,787	8.0	5,823	8.1	5,811	8.1	5,785	8.1	5,061	7.2	5,094	7.2	5,171	7.4
30-34	4,919	6.8	4,925	6.8	5,017	6.9	4,891	6.8	5,069	7.0	5,031	7.0	5,094	7.1	5,072	7.1	5,597	8.0	5,616	8.0	5,580	7.9
35-39	3,834	5.3	3,838	5.3	3,923	5.4	3,812	5.3	3,915	5.4	3,887	5.4	4,012	5.6	4,071	5.7	5,231	7.4	5,253	7.5	5,153	7.3
40-44	2,966	4.1	3,041	4.2	3,046	4.2	2,951	4.1	2,976	4.1	2,944	4.1	3,152	4.4	3,143	4.4	4,421	6.3	4,416	6.3	4,404	6.3
45-49	2,532	3.5	2,533	3.5	2,468	3.4	2,524	3.5	2,615	3.6	2,519	3.5	2,587	3.6	2,500	3.5	3,516	5.0	3,556	5.1	3,531	5.0
50-54	2,025	2.8	2,099	2.9	2,104	2.9	2,156	3.0	2,113	2.9	2,152	3.0	2,149	3.0	2,142	3.0	2,787	4.0	2,798	4.0	2,787	4.0
55-59	2,098	2.9	2,026	2.8	2,103	2.9	2,162	3.0	2,159	3.0	2,005	2.8	2,077	2.9	2,071	2.9	2,363	3.4	2,379	3.4	2,365	3.4
60-64	2,096	2.9	2,244	3.1	2,181	3.0	2,223	3.1	2,160	3.0	2,216	3.1	2,078	2.9	2,072	2.9	2,231	3.2	2,244	3.2	2,290	3.3
65-69	1,953	2.7	1,954	2.7	2,032	2.8	1,947	2.7	2,019	2.8	2,015	2.8	2,009	2.8	2,071	2.9	2,299	3.3	2,282	3.2	2,358	3.4
70-74	1,664	2.3	1,736	2.4	1,742	2.4	1,717	2.4	1,731	2.4	1,727	2.4	1,721	2.4	1,786	2.5	1,823	2.6	1,804	2.6	1,859	2.6
75-79	1,157	1.6	1,228	1.7	1,309	1.8	1,210	1.7	1,226	1.7	1,359	1.9	1,362	1.9	1,357	1.9	1,318	1.9	1,256	1.8	1,334	1.9
80-84	868	1.2	938	1.3	945	1.3	861	1.2	866	1.2	855	1.2	859	1.2	858	1.2	918	1.3	846	1.2	934	1.3
85+	579	0.8	648	0.9	508	0.7	572	0.8	577	0.8	640	0.9	644	0.9	643	0.9	844	1.2	761	1.1	835	1.2
N.S.	289	0.4	358	0.5	291	0.4	448	0.6	289	0.4	288	0.4	300	0.4	299	0.4	0	0.0	0	0.0	0	0.0
TOTAL	72,333	100.0	72,494	100.0	72,713	100.0	72,267	100.0	72,099	100.0	71,984	100.0	71,644	100.0	71,443	100.0	70,401	100.0	70,363	100.0	70,340	100.0

Source: Central Statistical Office

**TABLE 14. TOTAL END OF YEAR POPULATION BY SEX AND AGE GROUP  
1993 - 2003**

AGE GROUP	1993			1994			1995			1996			1997		
	MALE	FEMALE	TOTAL	MALE	FEMALE	TOTAL	MALE	FEMALE	TOTAL	MALE	FEMALE	TOTAL	MALE	FEMALE	TOTAL
0-4	4,276	4,042	8,318	4,282	3,979	8,261	4,289	3,992	8,281	4,240	3,980	8,220	3,980	3,825	7,805
5-9	4,346	4,189	8,535	4,294	4,114	8,408	4,293	4,065	8,358	4,290	4,070	8,360	4,134	4,033	8,167
10-14	4,113	4,061	8,174	4,115	4,001	8,116	4,107	4,030	8,137	4,123	4,031	8,154	4,042	3,983	8,025
15-19	4,254	3,558	7,812	4,210	3,543	7,753	4,165	3,535	7,700	4,082	3,482	7,564	4,015	3,721	7,736
20-24	3,411	3,244	6,655	3,415	3,178	6,593	3,422	3,260	6,682	3,415	3,222	6,637	3,484	3,380	6,864
25-29	3,142	2,717	5,859	3,106	2,689	5,795	3,125	2,761	5,886	3,120	2,715	5,835	3,095	2,692	5,787
30-34	2,672	2,247	4,919	2,685	2,240	4,925	2,717	2,300	5,017	2,661	2,230	4,891	2,743	2,326	5,069
35-39	2,078	1,756	3,834	2,086	1,752	3,838	2,103	1,820	3,923	2,061	1,751	3,812	2,115	1,800	3,915
40-44	1,515	1,451	2,966	1,562	1,479	3,041	1,566	1,480	3,046	1,537	1,414	2,951	1,551	1,425	2,976
45-49	1,281	1,251	2,532	1,310	1,223	2,533	1,294	1,174	2,468	1,305	1,224	2,529	1,352	1,263	2,615
50-54	986	1,039	2,025	1,062	1,037	2,099	1,033	1,071	2,104	1,052	1,104	2,156	1,032	1,081	2,113
55-59	1,010	1,088	2,098	1,006	1,020	2,026	1,009	1,094	2,103	1,012	1,150	2,162	1,017	1,142	2,159
60-64	966	1,130	2,096	1,072	1,172	2,244	1,010	1,171	2,181	1,014	1,215	2,229	982	1,178	2,160
65-69	927	1,026	1,953	951	1,003	1,954	1,002	1,030	2,032	954	993	1,947	986	1,033	2,019
70-74	511	1,153	1,664	806	930	1,736	810	932	1,742	814	903	1,717	818	913	1,731
75-79	401	756	1,157	597	631	1,228	655	654	1,309	582	634	1,216	587	639	1,226
80-84	368	500	868	417	521	938	448	497	945	442	425	867	441	425	866
85+	191	388	579	244	404	648	227	281	508	221	351	572	226	351	577
N.S.	168	121	289	194	164	358	111	180	291	165	283	448	122	167	289
<b>TOTAL</b>	<b>36,616</b>	<b>35,717</b>	<b>72,333</b>	<b>37,414</b>	<b>35,080</b>	<b>72,494</b>	<b>37,386</b>	<b>35,327</b>	<b>72,713</b>	<b>37,090</b>	<b>35,177</b>	<b>72,267</b>	<b>36,722</b>	<b>35,377</b>	<b>72,099</b>

Source: Central Statistical Office

**TABLE 14 (cont'd). TOTAL END OF YEAR POPULATION BY SEX AND AGE GROUP  
1993 - 2003**

AGE GROUP	1998			1999			2000			2001			2002			2003		
	MALE	FEMALE	TOTAL	MALE	FEMALE	TOTAL	MALE	FEMALE	TOTAL	MALE	FEMALE	TOTAL	MALE	FEMALE	TOTAL	MALE	FEMALE	TOTAL
0-4	3,922	3,780	7,702	3,564	3,464	7,028	3,429	3,500	6,929	3,182	3,062	6,244	3,186	3,169	6,355	3,120	3,010	6,130
5-9	4,181	4,081	8,262	4,143	4,031	8,174	4,000	4,143	8,143	3,867	3,597	7,464	3,868	3,626	7,494	3,809	3,593	7,402
10-14	4,090	4,036	8,126	4,101	4,001	8,102	4,000	4,072	8,072	3,482	3,541	7,023	3,480	3,518	6,998	3,438	3,515	6,953
15-19	3,915	3,627	7,542	3,806	3,580	7,386	3,571	3,786	7,357	3,378	3,361	6,739	3,362	3,327	6,689	3,359	3,368	6,727
20-24	3,500	3,391	6,891	3,612	3,487	7,099	3,500	3,572	7,072	2,386	2,137	4,523	2,396	2,064	4,460	2,435	2,092	4,527
25-29	3,113	2,710	5,823	3,101	2,710	5,811	2,714	3,071	5,785	2,545	2,516	5,061	2,564	2,530	5,094	2,572	2,599	5,171
30-34	2,728	2,303	5,031	2,772	2,322	5,094	2,286	2,786	5,072	2,824	2,773	5,597	2,821	2,795	5,616	2,836	2,744	5,580
35-39	2,101	1,786	3,887	2,158	1,854	4,012	1,857	2,214	4,071	2,780	2,451	5,231	2,802	2,451	5,253	2,852	2,301	5,153
40-44	1,530	1,414	2,944	1,648	1,504	3,152	1,500	1,643	3,143	2,365	2,056	4,421	2,366	2,050	4,416	2,331	2,073	4,404
45-49	1,302	1,217	2,519	1,319	1,268	2,587	1,214	1,286	2,500	1,905	1,611	3,516	1,934	1,622	3,556	1,898	1,633	3,531
50-54	1,046	1,106	2,152	1,068	1,081	2,149	1,071	1,071	2,142	1,436	1,351	2,787	1,439	1,359	2,798	1,414	1,373	2,787
55-59	939	1,066	2,005	984	1,093	2,077	1,071	1,000	2,071	1,183	1,180	2,363	1,195	1,184	2,379	1,162	1,203	2,365
60-64	1,010	1,206	2,216	962	1,116	2,078	1,143	929	2,072	1,000	1,231	2,231	1,001	1,243	2,244	1,036	1,254	2,290
65-69	984	1,031	2,015	964	1,045	2,009	1,071	1,000	2,071	1,068	1,231	2,299	1,054	1,228	2,282	1,105	1,253	2,358
70-74	815	912	1,727	835	886	1,721	929	857	1,786	852	971	1,823	837	967	1,804	865	994	1,859
75-79	654	705	1,359	638	724	1,362	714	643	1,357	583	735	1,318	557	699	1,256	574	760	1,334
80-84	431	424	855	421	438	859	429	429	858	356	562	918	317	529	846	348	586	934
85+	250	390	640	270	374	644	357	286	643	291	553	844	293	468	761	255	580	835
N.S.	122	166	288	123	177	300	143	156	299	0	0	0	0	0	0	0	0	0
<b>TOTAL</b>	<b>36,633</b>	<b>35,351</b>	<b>71,984</b>	<b>36,489</b>	<b>35,155</b>	<b>71,644</b>	<b>34,999</b>	<b>36,444</b>	<b>71,443</b>	<b>35,482</b>	<b>34,919</b>	<b>70,401</b>	<b>35,474</b>	<b>34,889</b>	<b>70,363</b>	<b>35,409</b>	<b>34,931</b>	<b>70,340</b>

Source: Central Statistical Office

**TABLE 15. TOTAL BIRTHS BY SEX AND AGE GROUP OF MOTHER**  
**1993 - 2003**

AGE GROUP	1993		1994		1995		1996		1997		1998		1999		2000		2001		2002		2003	
	M	F	M	F	M	F	M	F	M	F	M	F	M	F	M	F	M	F	M	F	M	F
< 15	5	7	3	7	5	6	6	1	5	7	5	2	1	5	3	5	2	6	1	3	4	2
15-19	138	140	119	100	100	103	113	95	113	103	91	89	103	98	90	84	96	71	70	90	92	71
20-24	290	253	269	236	232	226	180	183	162	155	146	138	130	155	119	116	134	134	101	123	125	108
25-29	249	234	215	229	188	206	183	210	179	188	176	177	173	171	158	171	143	149	121	130	90	106
30-34	162	134	132	139	147	123	131	125	139	120	145	124	148	129	139	119	151	139	109	146	119	124
35-39	52	61	77	52	61	66	75	87	65	72	59	57	65	72	82	74	67	81	60	80	84	77
40-44	11	19	11	16	18	18	18	15	15	17	16	11	20	17	25	14	20	22	25	17	27	25
45-49	1	1	0	0	1	1	3	1	0	0	0	0	2	4	0	0	0	1	4	1	2	0
TOTAL	908	849	826	779	752	749	709	717	678	662	638	598	642	651	616	583	613	603	491	590	543	513

Source: Statistical Unit, Ministry of Health

**TABLE 16. TOTAL BIRTHS BY AGE GROUP OF MOTHER  
1993 - 2003**

<b>AGE GROUP</b>	<b>1993</b>	<b>1994</b>	<b>1995</b>	<b>1996</b>	<b>1997</b>	<b>1998</b>	<b>1999</b>	<b>2000</b>	<b>2001</b>	<b>2002</b>	<b>2003</b>
<b>&lt; 15</b>	12	10	11	7	12	7	6	8	8	4	6
<b>15-19</b>	278	219	203	208	216	180	201	174	167	160	163
<b>20-24</b>	543	505	458	363	317	284	285	235	268	224	233
<b>25-29</b>	483	444	394	393	367	353	344	329	292	251	196
<b>30-34</b>	296	271	270	256	259	269	277	258	290	255	243
<b>35-39</b>	113	129	127	162	137	116	137	156	148	140	161
<b>40-44</b>	30	27	36	33	32	27	37	39	42	42	52
<b>45-49</b>	2	0	2	4	0	0	6	0	1	5	2
<b>TOTAL</b>	<b>1,757</b>	<b>1,605</b>	<b>1,501</b>	<b>1,426</b>	<b>1,340</b>	<b>1,236</b>	<b>1,293</b>	<b>1,199</b>	<b>1,216</b>	<b>1,081</b>	<b>1,056</b>

Source: Statistical Unit, Ministry of Health

**TABLE 17. TOTAL BIRTHS BY SEX AND HEALTH DISTRICTS  
1993 - 2003**

DISTRICTS	1993			1994			1995			1996			1997			1998			1999			2000			2001			2002			2003		
	M	F	T	M	F	T	M	F	T	M	F	T	M	F	T	M	F	T	M	F	T	M	F	T	M	F	T	M	F	T	M	F	T
Roseau	388	350	738	381	347	728	344	364	708	318	329	647	296	327	623	285	281	566	279	301	580	279	277	556	268	272	540	239	265	504	232	234	466
Castle Bruce	57	58	115	70	43	113	50	43	93	35	38	73	46	45	91	41	32	73	39	40	79	46	39	85	50	53	103	27	51	78	37	39	76
Grand Bay	91	76	167	70	69	139	63	69	132	71	62	133	66	51	117	78	58	136	61	54	115	44	52	96	53	67	120	34	46	80	47	48	95
La Plaine	44	42	86	48	51	99	34	33	67	41	32	73	39	32	71	23	22	45	32	27	59	31	19	50	22	32	54	22	30	52	24	23	47
Marigot	135	113	248	88	89	177	84	87	171	87	94	181	94	67	161	77	69	146	87	97	184	77	76	153	81	57	138	58	69	127	77	58	135
Portsmouth	121	120	241	106	102	208	110	91	201	93	106	199	92	80	172	82	88	170	83	84	167	80	78	158	95	77	172	56	91	147	75	64	139
St Joseph	72	90	162	63	78	141	67	62	129	64	56	120	45	60	105	52	48	100	61	48	109	59	42	101	44	45	89	55	38	93	51	47	98
TOTAL	908	849	1,757	826	779	1,605	752	749	1,501	709	717	1,426	678	662	1,340	638	598	1,236	642	651	1,293	616	583	1,199	613	603	1,216	491	590	1,081	543	513	1,056

Source: Statistical Unit, Ministry of Health

Health Districts  
 Roseau serves St Mark, St George and St Paul.  
 Castle Bruce serves St David  
 Grand Bay serves part of St Patrick  
 LaPlaine serves part of St Patrick  
 Marigot serves St Andrew  
 Portsmouth serves St John  
 St Joseph serves St Joseph and St Peter.

**TABLE 18. AGE SPECIFIC FERTILITY RATES OF FEMALE POPULATION 15-44 YEARS NOT ATTENDING SCHOOL, 1981, 1991 AND 2001 CENSUS**

AGE GROUP	1981			1991			2001		
	TOTAL WOMEN	BIRTHS IN LAST YEAR	AGE SPECIFIC FERTILITY RATE (ASFR) OOO	TOTAL WOMEN	BIRTHS IN LAST YEAR	AGE SPECIFIC FERTILITY RATE	TOTAL WOMEN	BIRTHS IN LAST YEAR	AGE SPECIFIC FERTILITY
<b>15-19</b>	2,951	459	155.5	2,033	233	114.6	1,432	150	104.7
<b>20-24</b>	3,244	744	229.3	3,284	426	129.7	2,035	252	123.8
<b>25-29</b>	2,185	437	200.0	2,695	381	141.4	2,442	328	134.3
<b>30-34</b>	1,751	252	143.9	2,235	258	115.4	2,693	325	120.7
<b>35-39</b>	1,414	115	81.3	1,758	121	68.8	2,385	198	83.0
<b>40-44</b>	1,327	31	23.4	1,441	36	25.0	2,001	53	26.5
<b>45-49</b>	1,292	...	...	1,249	...	...	1,567	8	5.1
<b>15-44</b>	<b>12,872</b>	<b>2,038</b>	<b>158.3</b>	<b>13,446</b>	<b>1,455</b>	<b>108.2</b>	<b>12,988</b>	<b>1,306</b>	<b>100.6</b>

	<b>1981</b>	<b>1991</b>	<b>2001</b>
<b>Total Fertility Rate</b>	4.2	3.0	3.0
<b>Mean Age at Childbearing</b>	26.5	27.2	27.8

Sources: Dominica Vol. 3, 1980 - 1981 Population Census of Dominica, 1991 and 2001 Population and Housing Census of Dominica, Central Statistical Office.

TABLE 19. TOTAL DEATHS BY AGE GROUP AND SEX

1993 - 2003

AGE GROUP	1993		1994		1995		1996		1997		1998		1999		2000		2001		2002		2003	
	M	F	M	F	M	F	M	F	M	F	M	F	M	F	M	F	M	F	M	F	M	F
0-11mths	16	9	14	22	10	14	15	9	10	12	7	11	17	13	11	10	14	10	6	6	11	9
1-4	2	4	1	0	5	2	4	2	1	2	0	2	3	2	0	0	2	2	2	1	1	2
5-9	1	0	2	2	0	1	1	2	3	1	5	0	2	0	0	0	2	0	0	0	0	0
10-14	2	1	0	1	2	0	3	1	0	0	3	4	4	1	1	1	0	2	2	3	2	0
15-19	2	1	6	0	3	0	4	2	4	1	6	3	4	0	5	0	3	4	3	3	3	0
20-24	8	2	3	1	4	2	4	1	2	0	4	2	3	4	6	0	3	5	3	2	6	2
25-29	6	3	10	4	13	7	5	3	10	2	9	2	5	1	6	3	8	5	4	2	9	0
30-34	4	3	6	6	8	4	4	5	6	4	3	7	12	2	4	3	6	3	6	4	4	3
35-39	3	4	4	3	6	1	12	4	7	8	9	3	13	6	7	4	6	4	12	3	8	3
40-44	9	5	4	1	5	5	11	5	9	4	10	8	0	3	9	6	9	2	8	5	16	3
45-49	7	5	9	8	11	1	6	3	8	2	11	9	8	10	8	1	5	3	6	9	8	10
50-54	11	5	13	5	5	5	13	10	10	6	13	1	12	8	11	6	10	2	12	2	8	12
55-59	12	11	6	8	12	8	13	8	3	9	11	10	18	9	9	10	7	6	17	4	9	9
60-64	22	14	19	21	21	14	17	13	14	12	25	11	12	17	12	12	11	15	17	15	16	9
65-69	23	23	21	15	26	22	13	17	22	15	19	19	26	22	20	17	21	17	28	23	24	17
70-74	44	29	39	23	48	45	34	28	32	27	40	16	34	24	25	27	40	20	38	23	38	24
75-79	32	37	18	31	32	33	42	37	23	35	48	29	40	35	28	24	28	20	36	37	37	24
80-84	32	45	36	41	28	42	42	43	34	33	37	47	47	41	36	46	33	46	41	42	37	44
85+	43	63	38	67	46	78	52	84	35	73	52	75	60	89	49	76	40	76	44	92	50	84
Unknown	10	5	12	10	8	7	8	3	22	12	18	6	3	8	11	7	12	8	23	10	10	5
Total	289	269	261	269	293	291	303	280	255	258	330	265	323	295	258	253	260	250	308	286	297	260

Source: Statistical Unit, Ministry of Health



**1993 - 2003**

<b>AGE GROUP</b>	<b>1993</b>	<b>1994</b>	<b>1995</b>	<b>1996</b>	<b>1997</b>	<b>1998</b>	<b>1999</b>	<b>2000</b>	<b>2001</b>	<b>2002</b>	<b>2003</b>
<b>0-11mths</b>	25	36	24	24	22	18	30	21	24	12	20
<b>1-4</b>	6	1	7	6	3	2	5	0	4	3	3
<b>5-9</b>	1	4	1	3	4	5	2	0	2	0	0
<b>10-14</b>	3	1	2	4	0	7	5	2	2	5	2
<b>15-19</b>	3	6	3	6	5	9	4	5	7	6	3
<b>20-24</b>	10	4	6	5	2	6	7	6	8	5	8
<b>25-29</b>	9	14	20	8	12	11	6	9	13	6	9
<b>30-34</b>	7	12	12	9	10	10	14	7	9	10	7
<b>35-39</b>	7	7	7	16	15	12	19	11	10	15	11
<b>40-44</b>	14	5	10	16	13	18	3	15	11	13	19
<b>45-49</b>	12	17	12	9	10	20	18	9	8	15	18
<b>50-54</b>	16	18	10	23	16	14	20	17	12	14	20
<b>55-59</b>	23	14	20	21	12	21	27	19	13	21	18
<b>60-64</b>	36	40	35	30	26	36	29	24	26	32	25
<b>65-69</b>	46	36	48	30	37	38	48	37	38	51	41
<b>70-74</b>	73	62	93	62	59	56	58	52	60	61	62
<b>75-79</b>	69	49	65	79	58	77	75	52	48	73	61
<b>80-84</b>	77	77	70	85	67	84	88	82	79	83	81
<b>85+</b>	106	105	124	136	108	127	149	125	116	136	134
<b>Unknown</b>	15	22	15	11	34	24	11	18	20	33	15
<b>Total</b>	<b>558</b>	<b>530</b>	<b>584</b>	<b>583</b>	<b>513</b>	<b>595</b>	<b>618</b>	<b>511</b>	<b>510</b>	<b>594</b>	<b>557</b>

Source: Statistical Unit, Ministry of Health

Note: 0 - 11 months is actually 0 to 11 months 28 days

**TABLE 21. MAJOR CAUSES OF DEATH**  
**1993 - 2003**

Major Causes	1993	1994	1995	1996	1997	1998	1999	2000	2001	2002	2003
Infective & Parastic	16	17	13	18	13	7	13	5	2	2	4
Neoplasms	92	92	91	98	85	114	122	109	84	142	123
Endocrine, Metabolic Diseases and Immunity Disorders	47	44	64	50	63	70	68	70	82	85	93
<i>o/w AIDS</i>	7	4	7	7	9	9	6	4	...	...	...
Hypertensive	81	69	97	102	74	94	110	76	89	82	86
Diseases of Respiratory System	25	28	39	51	22	39	52	25	13	27	20
Diseases of the Circulatory System	106	106	101	94	105	91	108	71	115	118	113
<i>o/w Disease of the Heart</i>	67	66	63	55	78	62	78	59	63	81	71
Diseases of Digestive System	19	16	16	13	10	23	23	16	16	13	13
Conditions Originating from Perinatal Period	14	15	14	14	12	11	21	15	13	10	14
Ill Defined Conditions	61	89	67	71	52	52	41	62	41	55	46
Accidents, Poisoning and Violence	30	21	34	22	28	44	31	21	17	26	26
Diseases of the Blood and Blood-forming Organs	9	5	7	9	11	8	6	3	1	1	0
Other	58	28	41	41	38	42	23	38	37	33	19
<b>TOTAL</b>	<b>558</b>	<b>530</b>	<b>584</b>	<b>583</b>	<b>513</b>	<b>595</b>	<b>618</b>	<b>511</b>	<b>510</b>	<b>594</b>	<b>557</b>

Source: Statistical Unit, Ministry of Health

Note: From 2001 HIV/AIDS disease is classified under Communicable Disease.

TABLE 21A. MAJOR CAUSES OF DEATH BY SEX

2001 - 2003

Major Causes	2001					2002					2003				
	M	% of Total	F	% of Total	Total	M	% of Total	F	% of Total	Total	M	% of Total	F	% of Total	Total
0.00. Symptoms, Signs and Ill-defined Conditions	19	3.7	22	4.3	41	32	5.4	23	3.9	55	28	5.0	18	3.2	46
1.00. Communicable Diseases	32	6.3	14	2.7	46	17	2.9	20	3.4	37	21	3.8	19	3.4	40
o/w															
HIV Disease	9	1.8	1	0.2	10	6	1.0	3	0.5	9	10	1.8	2	0.4	12
Acute Respiratory Infections	16	3.1	11	2.2	27	5	0.8	10	1.7	15	5	0.9	11	2.0	16
2.00. Neoplasms	48	9.4	36	7.1	84	87	14.6	55	9.3	142	68	12.2	55	9.9	123
o/w															
Stomach	4	0.8	5	1.0	9	8	1.3	10	1.7	18	7	1.3	9	1.6	16
Lungs, Trachea and Bronchus	4	0.8	4	0.8	8	8	1.3	6	1.0	14	6	1.1	5	0.9	11
Prostate	21	4.1	0	0.0	21	39	6.6	0	0.0	39	33	5.9	0	0.0	33
Breast	6	1.2	0	0.0	6	0	0.0	11	1.9	11	13	2.3	0	0.0	13
Cervix	0	0.0	0	0.0	0	0	0.0	3	0.5	3	0	0.0	3	0.5	3
Leukemia	4	0.8	1	0.2	5	2	0.3	1	0.2	3	1	0.2	0	0.0	1
3.00. Diseases of the Circulatory System	80	15.7	98	19.2	178	84	14.1	114	19.2	198	82	14.7	101	18.1	183
o/w															
Hypertensive Disease	37	7.3	52	10.2	89	29	4.9	53	8.9	82	30	5.4	56	10.1	86
Heart Disease	29	5.7	34	6.7	63	43	7.2	38	6.4	81	40	7.2	31	5.6	71
Cerebrovascular Disease	11	2.2	11	2.2	22	9	1.5	20	3.4	29	12	2.2	14	2.5	26
4.00. Certain Conditions Originating in the Perinatal Period	10	2.0	3	0.6	13	5	0.8	5	0.8	10	9	1.6	5	0.9	14
5.00. External Causes	12	2.4	5	1.0	17	22	3.7	4	0.7	26	23	4.1	3	0.5	26
o/w															
Land Transport Accidents	5	1.0	1	0.2	6	5	0.8	1	0.2	6	5	0.9	0	0.0	5
Assault (Homicide)	0	0.0	1	0.2	1	10	1.7	0	0.0	10	5	0.9	2	0.4	7
6.00. Other Diseases	59	11.6	72	14.1	131	61	10.3	65	10.9	126	66	11.8	59	10.6	125
o/w															
Diabetes	14	2.7	30	5.9	44	17	2.9	24	4.0	41	13	2.3	18	3.2	31
Diseases of the Respiratory Systems	5	1.0	2	0.4	7	7	1.2	9	1.5	16	8	1.4	8	1.4	16
<b>Total</b>	<b>260</b>	<b>47.3</b>	<b>250</b>	<b>49.0</b>	<b>510</b>	<b>308</b>	<b>51.9</b>	<b>286</b>	<b>48.1</b>	<b>594</b>	<b>297</b>	<b>53.3</b>	<b>260</b>	<b>46.7</b>	<b>557</b>

Source: Statistical Unit, Ministry of Health

**TABLE 21B. TOTAL DEATH BY MAJOR CAUSES  
2001 - 2003**

Major Causes	2001		2002		2003	
	Total	% of Total	Total	% of Total	Total	% of Total
<b>0.00. Symptoms, Signs and Ill-defined Conditions</b>	<b>41</b>	<b>8.0</b>	<b>55</b>	<b>9.3</b>	<b>46</b>	<b>8.3</b>
<b>1.00. Communicable Diseases</b>	<b>46</b>	<b>9.0</b>	<b>37</b>	<b>6.2</b>	<b>40</b>	<b>7.2</b>
<i>o/w</i>						
HIV Disease	1	0.2	9	1.5	12	2.2
Acute Respiratory Infections	27	5.3	15	2.5	16	2.9
<b>2.00. Neoplasms</b>	<b>84</b>	<b>16.5</b>	<b>142</b>	<b>23.9</b>	<b>123</b>	<b>22.1</b>
<i>o/w</i>						
Stomach	9	1.8	18	3.0	16	2.9
Lungs, Trachea and Bronchus	8	1.6	14	2.4	11	2.0
Prostate	21	4.1	39	6.6	33	5.9
Breast	6	1.2	11	1.9	13	2.3
Cervic	0	0.0	3	0.5	3	0.5
Leukemia	5	1.0	3	0.5	1	0.2
<b>3.00. Diseases of the Circulatory System</b>	<b>178</b>	<b>34.9</b>	<b>198</b>	<b>33.3</b>	<b>183</b>	<b>32.9</b>
<i>o/w</i>						
Hypertensive Disease	89	17.5	82	13.8	86	15.4
Heart Disease	63	12.4	81	13.6	71	12.7
Cerebrovascular Disease	22	4.3	29	4.9	26	4.7
<b>4.00. Certain Conditions Originating in the Perinatal Period</b>	<b>13</b>	<b>2.5</b>	<b>10</b>	<b>1.7</b>	<b>14</b>	<b>2.5</b>
<b>5.00. External Causes</b>	<b>17</b>	<b>3.3</b>	<b>26</b>	<b>4.4</b>	<b>26</b>	<b>4.7</b>
<i>o/w</i>						
Land Transport Accidents	6	1.2	6	1.0	5	0.9
Assault (Homicide)	1	0.2	10	1.7	7	1.3
<b>6.00. Other Diseases</b>	<b>131</b>	<b>25.7</b>	<b>126</b>	<b>21.2</b>	<b>125</b>	<b>22.4</b>
<i>o/w</i>						
Diabetes	44	8.6	41	6.9	31	5.6
Diseases of the Respiratory Systems	7	1.4	16	2.7	16	2.9
<b>Total</b>	<b>510</b>	<b>100.0</b>	<b>594</b>	<b>100.0</b>	<b>557</b>	<b>100.0</b>

Source: Statistical Unit, Ministry of Health

**TABLE 22. DISEASES OF MAJOR PUBLIC HEALTH IMPORTANCE CASES REPORTED  
1990 - 2003**

YEAR	PULMONARY TUBERCULOSIS	TYPHOID FEVER	DYSENTRY	GASTRO ENTERITIS UNDER 5	MEASLES	MAL- NUTRITION UNDER 5	HYPER- TENSION (1)	DIABETES (1)	STD (2)	AIDS (3)	HIV (4)
1990	6	9	17	151	13	...	...	...	119	6	9
1991	14	10	9	332	6	88	...	...	240	9	10
1992	13	1	5	611	2	82	...	...	374	6	24
1993	7	15	9	490	1	65	191	99	348	15	16
1994	10	7	6	146	1	...	...	...	399	6	19
1995	5	3	0	68	0	...	75	47	473	5	16
1996	6	1	0	366	0	48	81	54	382	14	23
1997	6	2	0	43	6	52	140	130	350	19	20
1998	7	9	0	70	0	45	117	96	445	12	17
1999	10	3	0	107	1	25	243	173	363	15	20
2000	1	0	1	26	1	97	266	128	529	4	18
2001	0	1	0	16	0	89	204	192	71	5	23
2002	0	2	1	139	0	87	332	163	521	7	18
2003	0	2	0	66	0	91	248	216	504	3	8

Source: Health Statistics Department, Ministry of Health

- Notes:
- (1) For 1993 number of cases implies number of visits.
  - (2) STD - Sexually Transmitted Diseases
  - (3) AIDS - Acquired Immune Deficiency Syndrome
  - (4) HIV - Human Immuno-deficiency Virus

**TABLE 23. POPULATION BY AGE GROUP, SEX AND  
TYPE OF DISABILITY, 2001 CENSUS.**

Age Group	Type of Disability									
	Sight	Hearing	Speech	Mobility	Body Movement s	Gripping	Learning	Behavioral	Other	Not Stated
<b>Both Sexes</b>										
Total	773	320	475	1,131	435	136	249	556	191	34
0-4	3	4	8	11	4	4	3	5	5	2
5-9	15	17	49	28	9	3	29	28	6	6
10-14	15	25	49	18	11	6	35	22	7	2
15-19	16	28	39	17	10	6	25	26	12	0
20-24	11	13	42	20	12	6	22	30	18	2
25-29	13	22	44	24	11	4	27	53	21	4
30-34	13	25	49	37	18	5	23	48	13	2
35-39	11	14	35	34	8	3	21	66	12	1
40-44	14	10	24	40	13	8	16	58	13	1
45-49	28	15	21	39	18	4	10	40	10	3
50-54	28	4	17	51	14	9	4	22	10	1
55-59	41	9	12	51	25	5	7	29	12	3
60-64	45	8	15	64	33	9	3	19	10	0
65-69	72	11	16	110	33	13	1	24	7	3
70-74	91	15	7	149	50	15	4	29	12	1
75-79	90	25	20	133	48	8	2	16	2	2
80-84	106	26	9	138	48	10	4	22	8	1
85+	181	49	19	167	70	18	13	19	13	0
<b>Male</b>										
Total	347	161	279	507	190	76	149	343	103	20
0-4	2	3	5	5	2	3	2	4	4	0
5-9	11	8	33	19	6	2	16	18	4	3
10-14	4	16	35	5	5	1	23	13	4	1
15-19	4	13	20	9	1	1	12	19	7	0
20-24	6	8	33	17	10	5	20	26	12	2
25-29	7	7	24	15	4	4	14	33	12	3
30-34	6	14	29	25	11	5	15	32	6	0
35-39	8	8	20	19	4	2	14	44	5	0
40-44	6	6	13	25	8	5	9	34	8	1
45-49	19	8	11	22	11	2	7	33	5	3
50-54	9	2	8	28	12	6	2	13	5	0
55-59	19	6	9	24	14	2	5	19	7	3
60-64	18	4	8	28	16	4	1	11	5	0
65-69	39	4	6	54	14	9	0	11	3	1
70-74	42	9	5	70	22	8	3	13	6	1
75-79	51	16	12	51	22	6	0	6	0	2
80-84	44	10	3	47	13	4	1	10	5	0
85+	52	19	5	44	15	7	5	4	5	0
<b>Female</b>										
Total	426	159	196	624	245	60	100	213	88	14
0-4	1	1	3	6	2	1	1	1	1	2
5-9	4	9	16	9	3	1	13	10	2	3
10-14	11	9	14	13	6	5	12	9	3	1
15-19	12	15	19	8	9	5	13	7	5	0
20-24	5	5	9	3	2	1	2	4	6	0
25-29	6	15	20	9	7	0	13	20	9	1
30-34	7	11	20	12	7	0	8	18	7	2
35-39	3	6	15	15	4	1	7	22	7	1
40-44	8	4	11	15	5	3	7	24	5	0
45-49	9	7	10	17	7	2	3	7	5	0
50-54	19	2	9	23	2	3	2	9	5	1
55-59	22	3	3	27	11	3	2	10	5	0
60-64	27	4	7	36	17	5	2	8	5	0
65-69	33	7	10	56	19	4	1	13	4	2
70-74	49	6	2	79	28	7	1	16	6	0
75-79	39	9	8	82	26	2	2	10	2	0
80-84	62	16	6	91	35	6	3	12	3	1
85+	109	30	14	123	55	11	8	15	8	0

Source: 2001 Population and Housing Census of Dominica

**TABLE 24. POPULATION BY AGE GROUP, SEX AND CHRONIC ILLNESS, 2001 CENSUS.**

Age Group	CHRONIC ILLNESS													
	Sickle cell Anaemia	Arthritis	Asthma	Diabetes	Hypertension	Heart disease	Stroke	Kidney Disease	Cancer	Lupus	Carpal Tunnel Syndrome	Other Illness	None	Not Stated
<b>Both Sexes</b>														
Total	416	4,710	1,805	2,399	5,434	677	352	129	121	15	35	2,463	54,545	603
0-4	50	3	145	3	3	8	0	1	0	0	1	140	5,704	30
5-9	60	10	379	4	2	12	0	6	1	0	0	214	6,593	34
10-14	39	11	297	4	2	19	0	6	1	1	2	227	6,239	44
15-19	56	18	233	11	11	28	2	8	1	1	1	234	5,982	45
20-24	48	46	117	10	15	24	0	9	0	0	2	157	3,988	46
25-29	34	56	87	8	68	13	1	5	2	2	1	157	4,503	39
30-34	26	91	73	37	126	25	3	10	3	1	4	210	4,875	47
35-39	25	138	70	78	225	21	5	9	1	1	4	158	4,396	58
40-44	17	208	72	121	336	25	7	9	7	1	5	150	3,471	46
45-49	17	249	45	147	410	28	8	13	8	4	2	133	2,525	47
50-54	12	352	39	211	475	37	13	5	10	0	2	106	1,723	37
55-59	9	438	41	257	545	43	25	9	6	0	2	86	1,250	23
60-64	9	539	42	304	676	56	22	7	9	0	4	102	953	31
65-69	6	680	55	348	778	72	47	8	14	3	0	105	895	29
70-74	4	641	44	329	637	69	73	3	19	0	2	109	587	14
75-79	0	494	31	249	494	63	62	7	21	0	0	60	385	13
80-84	1	393	19	165	350	66	49	4	8	1	2	54	227	11
85+	3	363	16	112	283	68	35	10	10	0	1	41	249	9
<b>Male</b>														
Total	174	1,559	923	833	1,636	253	144	67	60	1	12	1,149	28,957	333
0-4	31	3	89	2	2	6	0	1	0	0	1	78	2,821	19
5-9	33	6	226	3	2	4	0	5	1	0	0	109	3,382	20
10-14	19	7	182	3	2	7	0	2	0	0	1	95	3,084	23
15-19	16	3	113	4	3	5	0	1	1	0	0	102	3,048	19
20-24	20	12	39	2	1	8	0	5	0	0	0	64	2,169	27
25-29	7	15	29	3	18	5	1	2	1	0	0	69	2,323	25
30-34	8	23	26	12	27	11	1	4	0	1	2	90	2,538	28
35-39	9	45	33	18	53	11	2	7	0	0	1	76	2,453	29
40-44	7	64	31	38	81	8	3	4	0	0	3	75	2,017	24
45-49	7	83	15	51	130	9	2	9	1	0	1	68	1,492	35
50-54	4	120	16	91	145	12	5	4	3	0	0	82	1,011	23
55-59	2	157	17	95	166	9	11	5	1	0	0	43	753	12
60-64	4	162	14	96	206	27	9	4	4	0	2	45	551	16
65-69	5	227	30	122	246	34	23	5	10	0	0	53	518	10
70-74	2	237	25	127	203	30	31	0	11	0	0	48	353	10
75-79	0	168	15	93	180	27	25	3	13	0	0	32	218	5
80-84	1	119	12	41	97	22	17	2	7	0	0	27	119	6
85+	1	108	11	32	72	18	14	4	7	0	1	13	107	2
<b>Female</b>														
Total	242	3,161	882	1,566	3,798	424	208	62	61	14	23	1,314	25,588	270
0-4	19	0	56	1	1	2	0	0	0	0	0	62	2,883	11
5-9	27	4	153	1	0	8	0	1	0	0	0	105	3,211	14
10-14	20	4	115	1	0	12	0	4	1	1	1	132	3,155	21
15-19	40	15	120	7	6	23	2	7	0	1	1	132	2,934	26
20-24	28	34	78	8	14	16	0	4	0	0	2	93	1,819	19
25-29	27	41	58	5	50	8	0	3	1	2	1	88	2,180	14
30-34	20	68	47	25	99	14	2	6	3	0	2	120	2,337	19
35-39	16	93	37	60	172	10	3	2	1	1	3	62	1,943	29
40-44	10	144	41	83	255	17	4	5	7	1	2	75	1,454	22
45-49	10	166	30	96	280	19	6	4	7	4	1	65	1,033	12
50-54	8	232	23	120	330	25	8	1	7	0	2	44	712	14
55-59	7	281	24	162	377	34	14	4	5	0	2	43	497	11
60-64	5	377	28	208	470	29	13	3	5	0	2	57	402	15
65-69	1	433	25	227	530	38	24	3	4	3	0	52	377	19
70-74	2	404	19	202	434	39	42	3	8	0	2	61	234	4
75-79	0	326	16	156	314	36	37	4	8	0	0	48	167	6
80-84	0	274	7	124	253	44	32	2	1	1	2	27	108	5
85+	2	255	5	80	211	50	21	6	3	0	0	28	142	7

Source: 2001 Population and Housing Census of Dominica

**TABLE 25. LIFE EXPECTANCY AND PROJECTIONS**  
**1995 - 2010**

<b>PERIOD</b>	<b>MALE</b>	<b>FEMALE</b>	<b>BOTH SEXES</b>
<b>1995</b>	71.80	74.78	73.29
<b>1996</b>	71.70	75.01	73.35
<b>1997</b>	71.98	75.42	73.65
<b>1998</b>	71.39	75.44	73.42
<b>1999</b>	70.99	75.11	73.05
<b>2000</b>	70.65	74.76	72.71
<b>2001</b>	70.92	74.86	72.89
<b>2002</b>	72.37	77.72	73.93
<b>2003</b>	72.45	78.36	75.63
<b>2004</b>	74.10	77.91	75.89
<b>2005</b>	73.53	78.07	75.67
<b>2006</b>	73.23	77.78	75.46
<b>2007</b>	73.72	77.99	75.77
<b>2008</b>	73.79	78.15	75.84
<b>2009</b>	73.48	78.11	75.70
<b>2010</b>	73.54	78.17	75.76

Source: Central Statistical Office



**TABLE 26. NUMBER OF MARRIAGES BY AGE OF BRIDE AND GROOM AND NUMBER OF DIVORCES FILED  
1990 - 2003**

YEAR	15-19		20-24		25-29		30-34		35-39		40-49		50-59		60+		NOT STATED		NO. OF MARRIAGES	NO. OF DIVORCES FILED
	B	G	B	G	B	G	B	G	B	G	B	G	B	G	B	G	B	G		
1990	7	0	68	29	65	65	42	64	20	32	18	22	5	8	3	8	0	0	228	29
1991	15	2	73	32	71	69	56	72	26	36	25	42	12	16	5	16	5	3	288	34
1992	10	0	61	25	73	64	40	66	29	46	25	34	16	14	3	8	0	0	257	31
1993	8	0	78	36	89	74	50	85	29	38	21	25	15	19	6	19	1	1	297	25
1994	6	0	63	22	70	68	60	66	21	49	17	27	12	13	4	9	3	2	256	33
1995	2	0	54	28	64	49	42	56	29	32	20	36	13	19	5	9	0	0	229	48
1996	3	0	46	17	78	61	48	66	31	42	26	40	8	9	3	8	2	2	245	55
1997	8	0	39	20	78	81	74	62	31	47	42	48	9	16	4	11	2	2	287	51
1998	9	2	53	25	94	76	79	83	35	59	42	59	11	16	8	15	3	3	336	71
1999	3	1	46	15	114	89	84	98	41	55	30	47	12	16	8	17	1	1	339	61
2000	2	0	50	22	83	56	86	86	50	78	32	45	13	26	8	12	1	0	325	42
2001	6	1	29	9	85	63	62	67	35	48	39	58	19	15	3	17	0	0	278	59
2002	7	2	39	16	64	65	72	69	50	58	50	60	18	20	5	15	2	2	307	44
2003	3	0	40	10	58	39	40	57	32	46	29	41	14	16	2	10	2	1	220	55

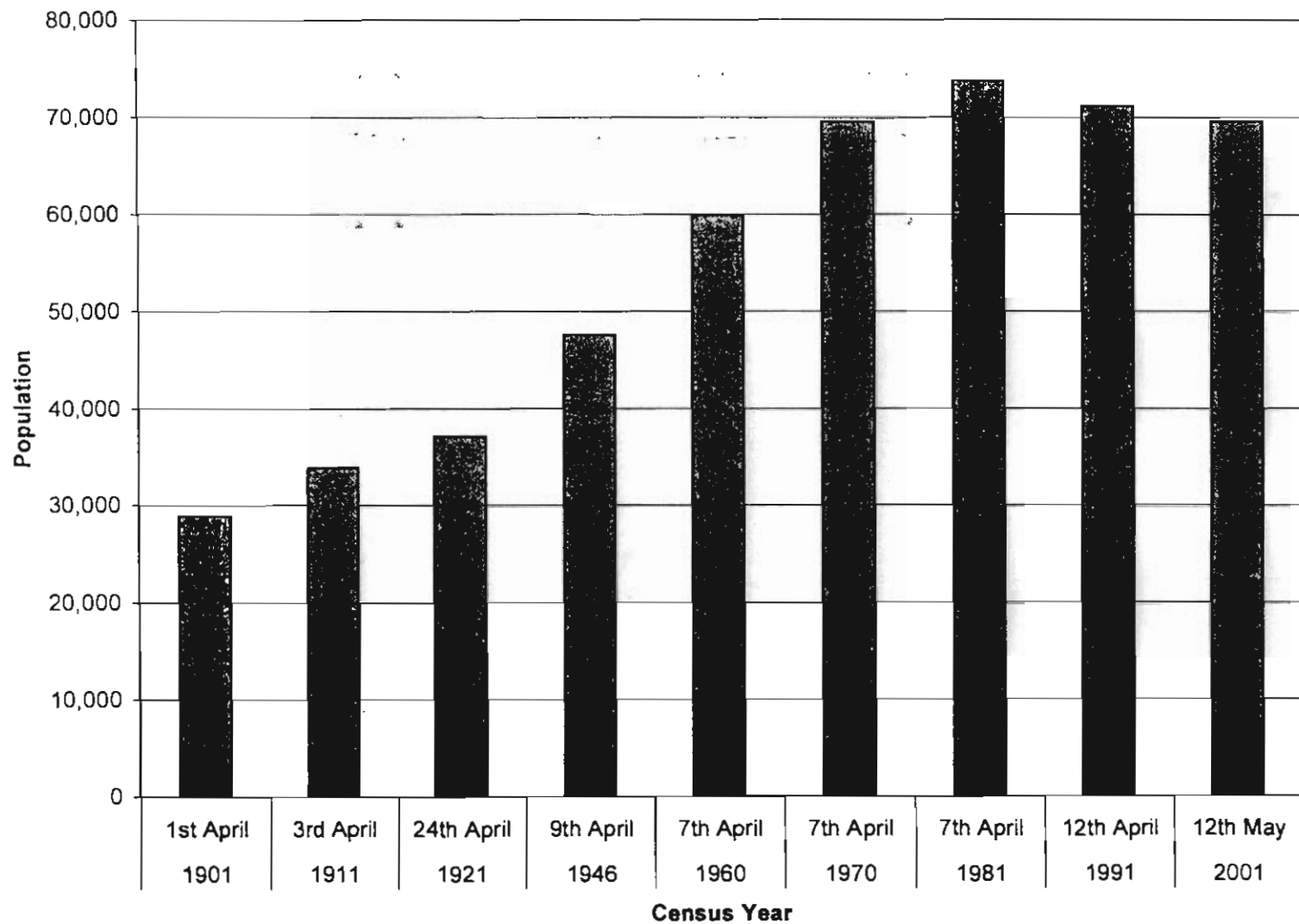
Source: Registry Department

**TABLE 27. HOUSEHOLDS AND AVERAGE HOUSEHOLD SIZE BY PARISH.  
1981, 1991 and 2001**

Parish	1981	1991	2001	% CHANGE 1981-1991	% CHANGE 1991-2001	1981 AVG. H/HOLD SIZE	1991 AVG. H/HOLD SIZE	2001 AVG. H/HOLD SIZE
<b>St. George</b>	4,899	5,673	6,052	15.8	6.7	4.2	3.6	3.2
<b>City of Roseau</b>	2,150	4,402	4,416	104.7	0.3	3.9	3.6	3.2
<b>Rest of St. George</b>	2,749	1,271	1,636	-53.8	28.7	4.4	3.5	3.2
<b>St. John</b>	1,372	1,454	1,908	6.0	31.2	3.9	3.4	2.8
<b>St. Peter</b>	465	533	527	14.6	-1.1	3.4	3.1	2.7
<b>St. Joseph</b>	1,702	1,998	2,103	17.4	5.3	3.9	3.1	2.7
<b>St. Paul</b>	1,507	2,030	2,664	34.7	31.2	4.2	3.7	3.1
<b>St. Luke</b>	438	486	540	11.0	11.1	3.4	3.2	2.9
<b>St. Mark</b>	476	562	617	18.1	9.8	4.0	3.5	3.0
<b>St. Patrick</b>	2,186	2,536	2,667	16.0	5.2	4.5	3.5	3.1
<b>St. David</b>	1,479	1,754	1,949	18.6	11.1	5.0	4.0	3.5
<b>St. Andrew</b>	2,786	3,142	3,332	12.8	6.0	4.6	3.5	3.0
<b>Dominica</b>	<b>17,310</b>	<b>20,168</b>	<b>22,359</b>	16.5	10.9	<b>3.5</b>	<b>3.5</b>	<b>3.1</b>

Source: 1980-1981 Population Census of the Commonwealth Caribbean,  
Population and Housing Census 1991 and 2001

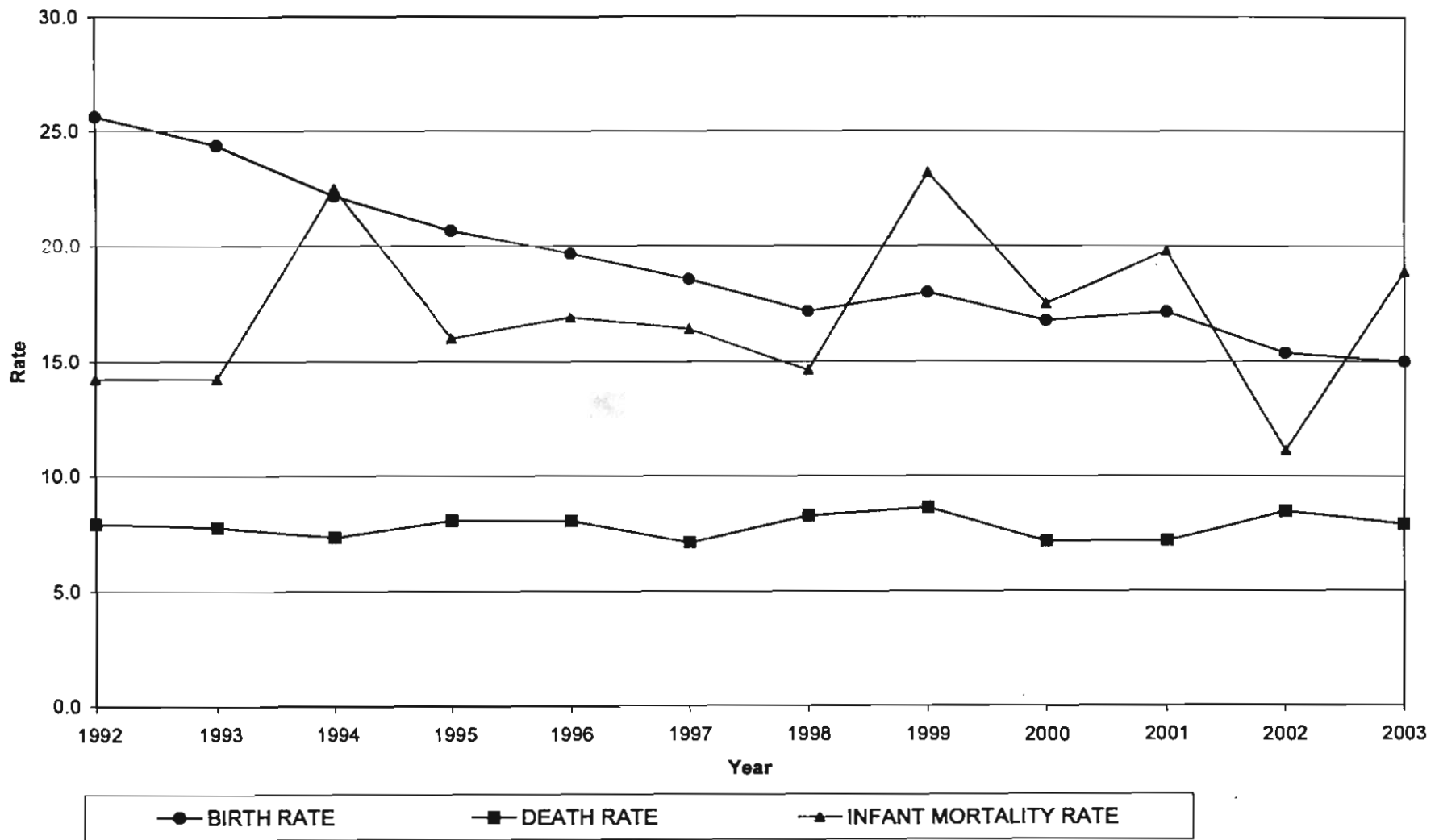
**CHART 1: NON-INSTITUTIONAL POPULATION AT CENSUS YEARS (1901-2001)**



**CHART 2: INTERCENSAL ANNUAL RATE OF CHANGE (1881-2001)**



**CHART 3: VITAL RATES (1992-2003)**



**CHART 4: POPULATION BY SEX AND AGE GROUP, 2001 CENSUS**

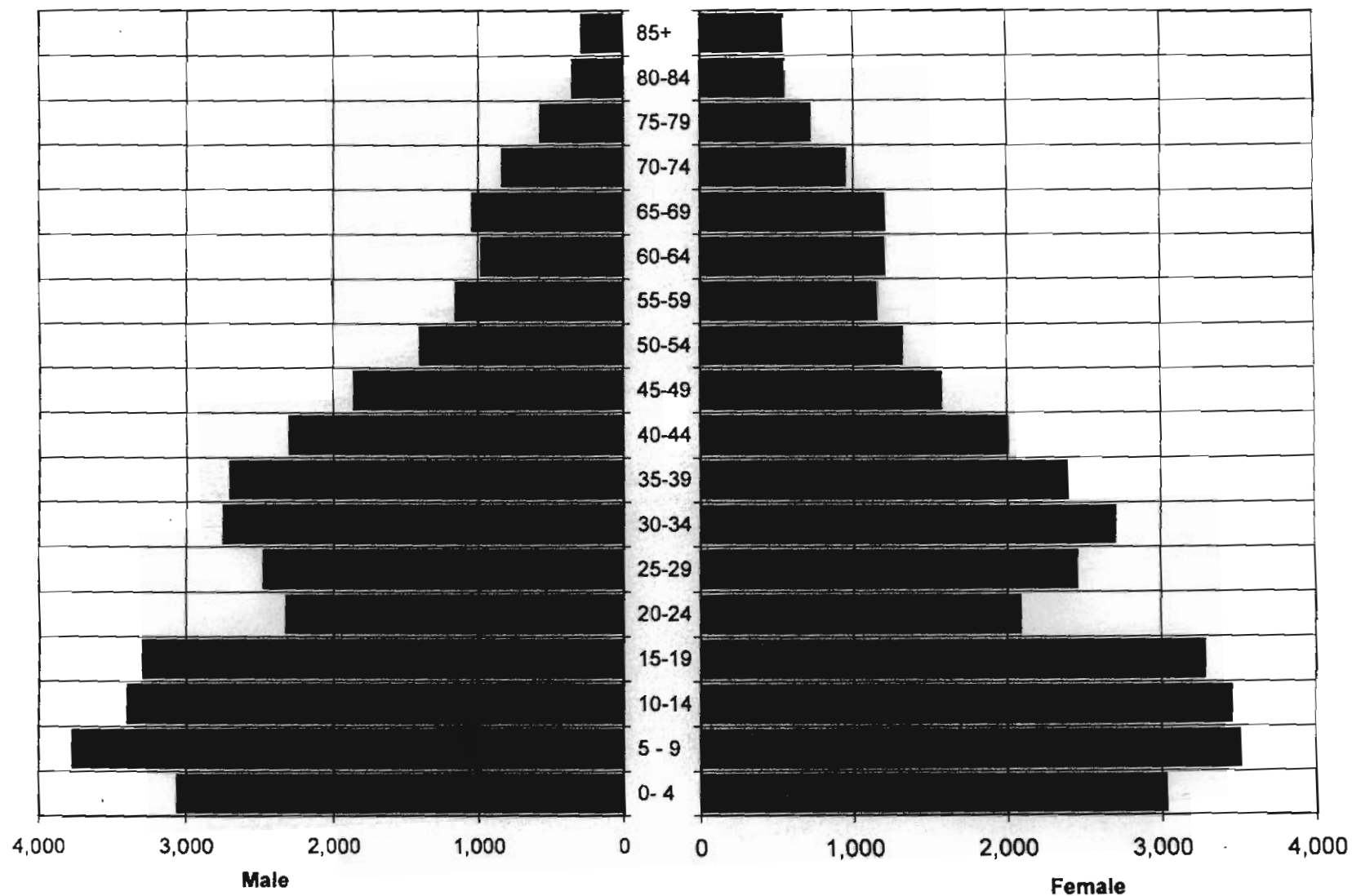


CHART 5: END OF YEAR AND MEAN POPULATION (1993-2003)

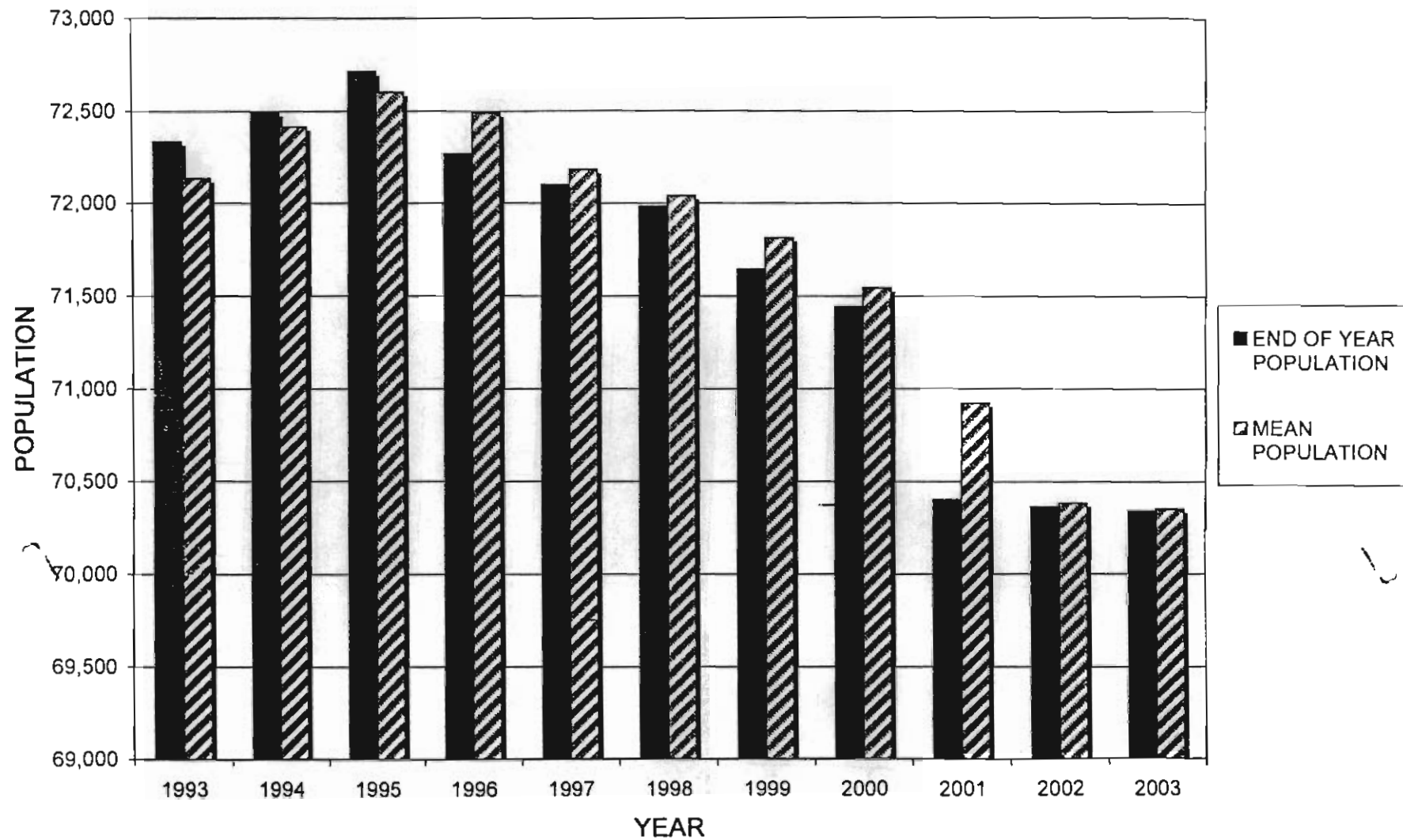
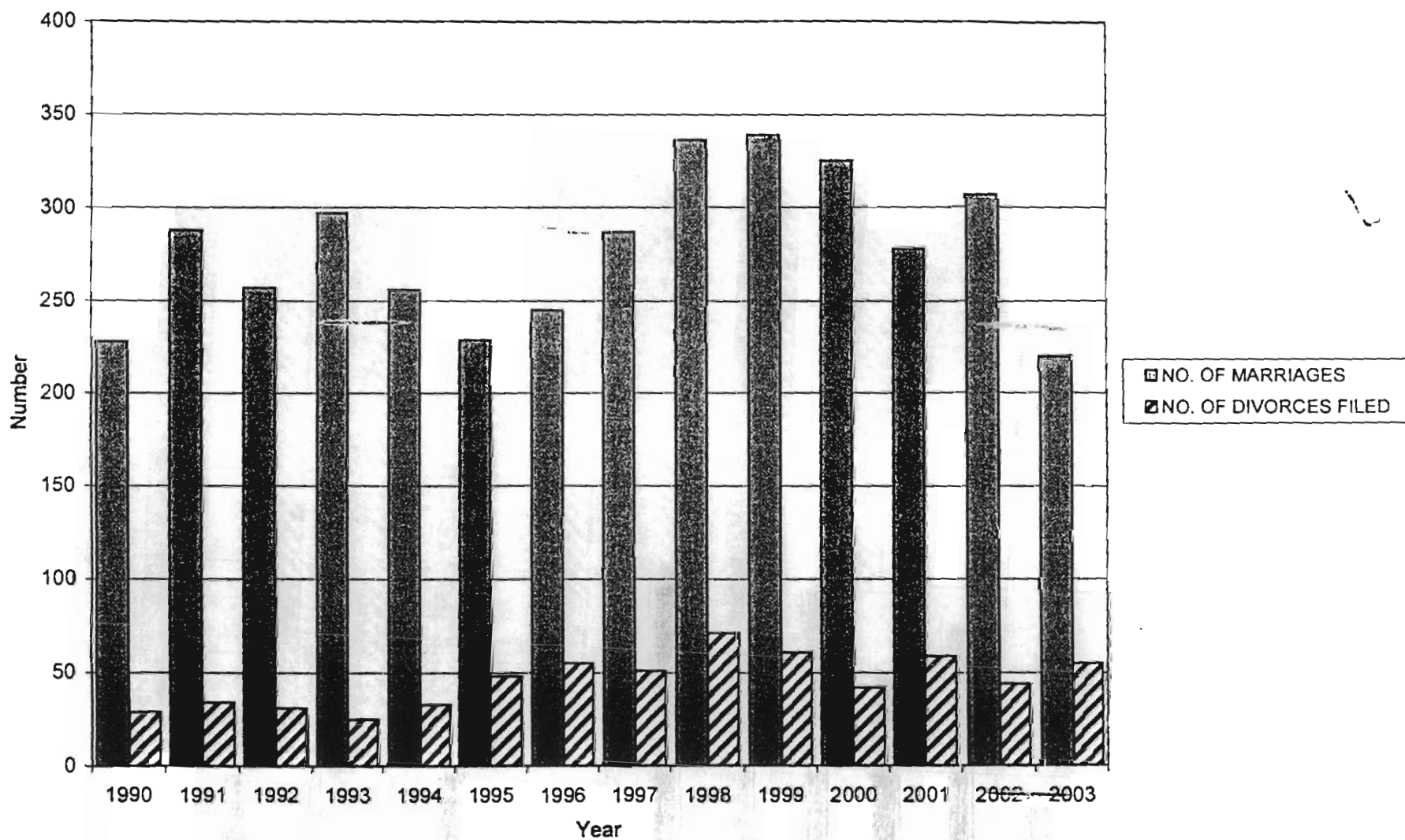


CHART:6 NUMBER OF MARRIAGES AND DIVORCES (1990 -2003)





## POPULATION AREAS WITHIN PARISHES

### St. George

Bellevue Chopin  
 Citronier  
 Fond Baron  
 Fond Canie  
 Fond Cole  
 Giraudel/Eggleston  
 Goodwill  
 Kingshill  
 Laudat  
 Loubiere  
 Morne Prosper  
 Newtown  
 Pottersville  
 Roseau  
 Trafalgar  
 Wallhouse  
 Wotten Waven

### St. John

Borne  
 Capuchin  
 Clifton  
 Cocoyer  
 Cottage  
 Glanvillia  
 Guillette  
 Picard  
 Portsmouth  
 Savanne Paille  
 Tantan  
 Toucarie

### St. Peter

Bioche  
 Colihaut  
 Dublanc

### St. Joseph

Belles  
 Coulibistrie  
 Layou  
 Mero  
 Morne Rachette  
 Penrice  
 Salisbury  
 St. Joseph

### St. Paul

Belfast  
 Campbell  
 Canefield/Roger  
 Cockrane  
 Culpepper  
 Jimmit  
 Mahaut  
 Massacre  
 Point Casse  
 River Estate  
 Tarreau

## POPULATION AREAS WITHIN PARISHES

<u>St. Luke</u>	<u>St. Mark</u>	<u>St. Patrick</u>	<u>St. David</u>	<u>St. Andrew</u>
Pointe Mitchel	Gallion	Bagatelle	Atkinson	Anse De Mai
	Scotts Head	Berricoa/Grandbay	Batacca	Bellemaniere
	Soufriere	Boetica	Castle Bruce	Bense
		Caribe	Crayfish River	Blenheim
		Casse O'Gowrie	Gaulette River	Calibishie
		Delices	Good Hope	Concord
		Dubique	Grand Fond	Delafor
		Felicite	Madjinni	Demetrie
		Fond St. Jean	Mopo	Dos D'Ane
		Grand Bay	Morne Jaune	Hampstead
		Grand Coulibri	Petite Soufriere	Hatten Garden
		Hagley	Riviere Cyrique	Londonderry
		La Plaine/Plaissance	Rosalie	Marigot
		La Roche	Salybia	Moore Park
		La Ronde	San Sauveur	North End
		Montine	Sineku	Paix Bouche
		Perdu Temps	St. Cyr.	Penville
		Petite Savanne	Tranto	Thibaud
		Pichelin		Vieille Case
		Picodeau		Wesley
		Pointe Carib		Woodford Hill
		Pointe Mulatre		
		Powell		
		Stowe		
		Tete Morne		
		Victoria		



*Contact us for more information...*

*External Trade Statistics*

*Travel Statistics*

*Consumer Price Index*

*National Accounts*

*Economic Indicators*

*Balance of Payments*

*Population Statistics*

*Demographic Statistics*

*Education Statistics*

*Environmental Statistics*

*Social & Gender Statistics*

*Central Statistical Office*

*Ministry of Finance*

*Tel (767)-448-2401 Ext. 3400 – 3407*

*Fax: (767)-449-9128*

*Email address: [csoda@cwdom.dm](mailto:csoda@cwdom.dm)*

*Price: EC\$40.00*