



Commonwealth of Dominica

Kalinago Territory

Population and Housing Report

No. 2



Central Statistics Office
Ministry of Finance
Roseau
Dominica

Table of Contents

KALINAGO TERRITORY

Preface	i
Table of Contents	ii
Table	Page No.
1 Population by Area and Sex	1
1.1 Percentage Population by Area 2001 and 2011	1
2 Population by Area, Sex and Ethnicity	2
3 Population by Area, Age Group and Sex	3
3.1 Percentage Population by Age Group and Sex	3
4 Population by Sex and Religion	4
4.1 Percentage Population by Religion 2001 and 2011	4
5 Population by Area, Sex and Relationship to Head of Household	5
6 Population by Sex and Type of School/ Institution Attending 2001 and 2011	6
6.1 Percentage Population by Sex and Type of School/ Institution Attending 2001 and 2011	6
7 Population by Sex and Highest Certificate, Diploma or Degree Earned	7
8 Population by Sex and Type of Disability compared to the National Disabled Population	8
9 Population by Sex and Type of Chronic Illness compared to the National Population	9
10 Population 15 years and over by Union Status	10
10.1 Percentage Population 15 years and over by Union Status 2001 and 2011	10
11 Population 15 years and over by Marital Status	11
11.1 Percentage Population 15 years and over by Marital Status	11
12 Population 15 years and over by Economic Activity for the Past Week	12
13 Population 15 years and over by Economic Activity for the Past Week, compared to 2001 Census	13
14 Employed Population 15 years and over by Occupational Group for the Past Week, compared to 2001 Census and 2011 National Employed Population	14
15 Employed Population 15 years and over by Industrial Group for the Past Week, compared to 2001 Census and 2011 National Employed Population	14
16 Distribution of Households by Area and Main Source of Water Supply	15
16.1 Percentage Distribution of Households by Main Source of Water Supply, 2001 and 2011	15
17 Distribution of Households by Area and Type of Toilet Facility	16
17.1 Percentage Distribution of Households by Area and Type of Toilet Facility, 2001 and 2011	16
18 Distribution of Households by Area and Type of Lighting	17
18.1 Distribution of Households by Type of Lighting 2001 and 2011	17
19 Distribution of Households by Area and Type of Cooking Fuel	18
19.1 Percentage Distribution of Households by Type of Cooking Fuel, 2001 and 2011	18
20 Households having One or More Selected Appliances/Equipment as compared to National Households	19

Charts

1	Population by Age Group and Sex 2011	20
2	Population by Area 2001 and 2011	20
3	Percent Population by Religion 2001 and 2011	21
4	Percent Disabled Population by Type of Disability Compared to National Population 2011	21
5	Percent Population with Chronic Illness Compared to National Population 2011	22
6	Unemployment Rate by Sex 2001 and 2011	22
7	Percent Employed Population by Occupational Group 2001 and 2011	23
8	Percent Households by Main Source of Water Supply 2001 and 2011	23
9	Percent Households by Type of Lightning 2001 and 2011	24

KALINAGO TERRITORY

TABLE 1. POPULATION BY AREA AND SEX

	POPULATION						No. of Households		Average Household Size	
	Male		Female		Total					
Communities	2001	2011	2001	2011	2001	2011	2001	2011	2001	2011
Total	1260	1209	948	903	2208	2112	579	652	3.8	3.2
Crayfish River/Monkey Hill	276	251	222	190	498	441	131	132	3.8	3.3
Gaulette River /Sim Sim	195	168	167	144	362	312	96	97	3.8	3.2
Sineku/Madjini	255	211	181	170	436	381	109	126	4.0	3.0
Salybia/Point Salybia/St Cyr	229	284	150	173	379	457	98	126	3.9	3.6
Bataca	305	295	228	226	533	521	145	171	3.7	3.0

Sources: 2001 and 2011 Population and Housing Censuses

Note: Households include Closed Households

TABLE 1.1. PERCENTAGE POPULATION BY AREA 2001 AND 2011

Communities	% Population		% Change in population 2001-2011
	2001	2011	
Crayfish River/Monkey Hill	22.6	20.9	-11.4
Gaulette River /Sim Sim	16.4	14.8	-13.8
Sineku/Madjini	19.7	18.0	-12.6
Salybia/Point Salybia/St Cyr	17.2	21.6	20.6
Bataca	24.1	24.7	-2.2
Total	100.0	100.0	-4.3

Sources: 2001 and 2011 Population and Housing Censuses and Central Statistics Office

TABLE 2. POPULATION BY AREA, SEX AND ETHNICITY

Communities	Sex	Ethnic Group										% Total Population by Community	
		Amerindian / Kalinago		Mixed		Other		Don't Know Not Stated		Total			
		2001	2011	2001	2011	2001	2011	2001	2011	2001	2011		
	Total	1188	1451	953	592	50	49	10	20	2201	2112	2001	2011
	Male	644	814	559	350	36	32	2	13	1241	1209	56.4	57.2
Female	544	637	394	242	14	17	8	7	960	903	43.6	42.8	
Crayfish River/Monkey Hill	Male	158	157	108	79	6	6	1	9	273	251	55.2	56.9
	Female	141	114	72	65	4	5	5	6	222	190	44.8	43.1
Gaulette River /Sim Sim	Male	124	116	67	49	4	2	0	1	195	168	53.9	53.8
	Female	112	108	51	36	4	0	0	0	167	144	46.1	46.2
Sineku/Madjini	Male	25	166	219	40	2	5	0	0	246	211	56.4	55.4
	Female	28	120	162	45	0	5	0	0	190	170	43.6	44.6
Salybia/Point Salybia/St Cyr	Male	169	167	50	113	5	2	0	2	224	284	59.6	62.1
	Female	115	116	35	57	2	0	0	0	152	173	40.4	37.9
Bataca	Male	168	208	115	69	19	17	1	1	303	295	57.0	56.6
	Female	148	179	74	39	4	7	3	1	229	226	43.0	43.4

Sources: 2001 and 2011 Population and Housing Censuses

Notes: Tabulated Data

In 2011 Census Previously Mixed Ethnicity may have considered themselves Kalinago

TABLE 3. POPULATION BY AREA, AGE GROUP AND SEX

	Sex	Age Group												Not Stated	Total
		0-4	5-9	10-14	15-19	20-24	25-29	30-34	35-39	40-44	45-49	50-54	55-59	60 +	
Communities	Total	201	201	200	215	166	115	119	133	146	126	123	81	283	2112
	Male	116	107	114	129	83	68	62	83	84	79	78	52	152	1209
	Female	85	94	86	86	83	47	57	50	62	47	45	29	131	903
Crayfish River/Monkey Hill	Male	20	21	32	20	17	14	10	18	18	21	15	8	35	251
	Female	19	21	14	26	22	8	7	13	16	7	10	8	19	190
Gaulette River /Sim Sim	Male	15	18	15	26	12	7	11	11	6	7	12	10	18	168
	Female	16	17	17	8	12	10	8	6	10	7	8	4	21	144
Sineku/Madjini	Male	28	21	21	21	12	12	11	15	15	9	14	8	24	211
	Female	16	19	16	26	16	5	10	11	9	8	7	2	25	170
Salybia/Point Salybia/St Cyr	Male	35	27	21	28	26	11	17	13	20	23	9	12	42	284
	Female	19	19	15	13	16	10	17	6	13	8	8	3	25	173
Bataca	Male	18	20	25	34	16	24	13	26	25	19	28	14	33	295
	Female	15	18	24	13	17	14	15	14	14	17	12	12	41	226

Source: 2011 Population and Housing Census

TABLE 3.1. PERCENTAGE POPULATION BY AGE GROUP AND SEX

		Age Group												Not Stated	Total
		0-4	5-9	10-14	15-19	20-24	25-29	30-34	35-39	40-44	45-49	50-54	55-59	60 +	
Total	9.5	9.5	9.5	10.2	7.9	5.4	5.6	6.3	6.9	6.0	5.8	5.8	3.8	13.4	100.0
% Male	5.5	5.1	5.4	6.1	3.9	3.2	2.9	3.9	4.0	3.7	3.7	2.5	7.2	0.1	57.2
% Female	4.0	4.5	4.1	4.1	3.9	2.2	2.7	2.4	2.9	2.2	2.1	1.4	6.2	0.0	42.8

Source: 2011 Population and Housing Census

Note: % of Total Population

TABLE 4. POPULATION BY SEX AND RELIGION

	Religion							
Sex	Evangelical	Roman Catholic	Seventh Day Adventist	Muslim (Islam)	Other Religion	None	Not Stated	Total
Total	319	1361	175	35	103	88	31	2112
% Total	15.1	64.4	8.3	1.7	4.9	4.2	1.5	100.0
Male	141	782	101	20	88	60	17	1209
% Male	6.7	37.0	4.8	0.9	4.2	2.8	0.8	57.2
Female	178	579	74	15	15	28	14	903
% Female	8.4	27.4	3.5	0.7	0.7	1.3	0.7	42.8

Source: 2011 Population and Housing Census

Note: % of Total Population

TABLE 4.1. PERCENTAGE POPULATION BY RELIGION 2001 AND 2011

	Religion							
Period	Evangelical	Roman Catholic	Seventh Day Adventist	Muslim (Islam)	Other Religion	None	Not Stated	Total
2001	11.5	75.2	...	1.1	...	3.9	8.3	100.0
2011	15.1	64.4	8.3	1.7	4.9	4.2	1.5	100.0

Sources: 2001 and 2011 Population and Housing Censuses

TABLE 5. POPULATION BY AREA, SEX AND RELATIONSHIP TO HEAD OF HOUSEHOLD

		Relationship to the Head						
		Head	Spouse/ Partner	Child	Grandchild	Parent/ Parent-in- law/In/Laws Other relatives	Non-Relative/ Other	Total
Communities	Sex							
	Total	638	310	841	198	88	37	2112
	Male	476	47	480	127	55	25	1210
	Female	162	263	361	71	33	12	902
Crayfish River/Monkey Hill	Male	99	12	96	21	14	9	251
	Female	29	55	77	14	11	4	190
Gaulette River /Sim Sim	Male	65	8	60	25	9	1	168
	Female	32	40	50	15	5	2	144
Sineku/Madjini	Male	86	3	93	20	5	4	211
	Female	29	52	78	9	2	0	170
Salybia/Point Salybia/St Cyr	Male	114	8	117	31	11	4	285
	Female	18	55	75	14	8	3	173
Bataca	Male	112	16	114	30	16	7	295
	Female	54	61	81	19	7	3	225

Source: 2011 Population and Housing Census

TABLE 6. POPULATION BY SEX AND TYPE OF SCHOOL/INSTITUTION ATTENDING 2001 AND 2011

Sex	School/Institution								2011		2001	
	Pre-School Kindergarten and Day Care	Primary	Secondary	State College	University	Other	Don't Know	Not Stated	Total	% Total	Total	% Total
Total	82	283	211	27	13	43	1	2	662	100.0	680	100.0
Male	49	156	121	6	7	21	0	0	360	54.4	376	55.3
Female	33	127	90	21	6	22	1	2	302	45.6	304	44.7

Sources: 2001 and 2011 Population and Housing Censuses

TABLE 6.1. PERCENTAGE POPULATION BY SEX AND TYPE OF SCHOOL/INSTITUTION ATTENDING 2001 AND 2011

Period	Pre-School Kindergarten and Day Care	Primary	Secondary	State College	University	Other	Don't Know	Not Stated	Total
2001	9.0	58.2	26.9	5.9	100.0
2011	12.4	42.7	31.9	4.1	2.0	6.5	0.2	0.3	100.0

Sources: 2001 and 2011 Population and Housing Censuses

TABLE 7. POPULATION BY SEX AND HIGHEST CERTIFICATE, DIPLOMA OR DEGREE EARNED

Highest Certificate , Diploma or Degree Earned	Male		Female		Total	
	No.	%	No.	%	No.	%
School Leaving Certificate/Junior Secondary Program	102	6.0	78	4.6	180	10.5
GCE O'Levels/High School Diploma/Certificate	88	5.1	100	5.8	188	11.0
GCE A'Levels, Undergraduate Diploma, Other Diploma/Certificate	16	0.9	13	0.8	29	1.7
Associate Degree, /Professional Certificate	11	0.6	20	1.2	31	1.8
Bachelor's Degree	10	0.6	6	0.4	16	0.9
Post Graduate Diploma./ Higher Degree	0	0.0	2	0.1	2	0.1
None	715	41.7	475	27.7	1190	69.5
Other	5	0.3	8	0.5	13	0.8
Don't Know/ Not stated	38	2.2	26	1.5	64	3.7
Total	985	57.5	728	42.5	1713	100.0

Source: 2011 Population and Housing Census**Notes: Refers to Population 10 years and over****% Of Total Population****No. - Number**

**TABLE 8. POPULATION BY SEX AND TYPE OF DISABILITY COMPARED TO
THE NATIONAL DISABLED POPULATION**

Type of Disability	Kalinago Territory						National Disabled Population		
	Male		Female		Total		Male	Female	Total
	No.	%	No.	%	No.	%	%	%	%
Sight	11	10.6	18	17.3	29	27.9	14.6	17.5	32.1
Hearing	10	9.6	10	9.6	20	19.2	5.5	5.6	11.2
Speech	10	9.6	15	14.4	25	24.0	7.9	5.7	13.7
Mobility	16	15.4	16	15.4	32	30.8	16.8	21.0	37.8
Body Movements	13	12.5	11	10.6	24	23.1	7.3	9.5	16.8
Gripping	6	5.8	4	3.8	10	9.6	2.3	2.4	4.7
Learning	10	9.6	5	4.8	15	14.4	3.7	2.9	6.6
Behavioral	2	1.9	4	3.8	6	5.8	5.9	3.2	9.1
Other	7	6.7	0	0.0	7	6.7	5.9	4.3	10.2

Source: 2011 Population and Housing Census

Notes: % of Total Disabled Population

Total Disabled Cases =104

Total Disabled Cases refers to persons recording at least one occurrence of disability

**TABLE 9. POPULATION SEX AND TYPE OF CHRONIC ILLNESS, COMPARED TO
THE NATIONAL POPULATION**

Type of Illness	Kalinago Territory						National Population		
	Male		Female		Total		Male	Female	Total
	No.	%	No.	%	No.	%	%	%	%
Sickle Cell	3	0.1	5	0.2	8	0.4	0.4	0.6	0.5
Arthritis	11	0.5	16	0.8	27	1.3	3.3	6.8	5.0
Asthma	17	0.8	18	0.9	35	1.7	2.9	3.5	3.2
Diabetes	15	0.7	37	1.8	52	2.5	3.9	7.3	5.5
Hypertension	27	1.3	58	2.7	85	4.0	6.9	13.7	10.2
Heart Disease	4	0.2	3	0.1	7	0.3	0.6	1.0	0.8
Stroke	7	0.3	5	0.2	12	0.6	0.5	0.6	0.5
Cancer	3	0.1	3	0.1	6	0.3	0.3	0.3	0.3
Mental Illness	7	0.3	4	0.2	11	0.5	0.8	0.5	0.6
Other Illness	45	2.1	38	1.8	80	3.8	3.3	4.1	3.7
No Illness	1070	50.7	736	34.8	1806	85.5	80.3	71.4	76.0
Illness Unknown	20	0.9	8	0.4	28	1.3	1.4	1.2	1.3

Source: 2011 Population and Housing Census

TABLE 10. POPULATION 15 YEARS AND OVER BY UNION STATUS

Sex	Union Status									Total
	Married and Living with Spouse	Married and not living with spouse	Common Law union	Visiting partner	Separated but not in a union	Widowed and not in a union	Divorced and not in a union	Not in a union	Other Don't Know/Not stated	
Total	398	44	276	36	10	51	6	670	10	1501
% Total	26.5	2.9	18.4	2.4	0.7	3.4	0.4	44.6	0.7	100.0
Male	207	25	137	15	4	12	4	458	6	868
% Male	13.8	1.7	9.1	1.0	0.3	0.8	0.3	30.5	0.4	57.8
Female	191	19	139	21	6	39	2	212	4	633
% Female	12.7	1.3	9.3	1.4	0.4	2.6	0.1	14.1	0.3	42.2

Source: 2011 Population and Housing Census

TABLE 10.1. PERCENTAGE POPULATION 15 YEARS AND OVER BY UNION STATUS 2001 AND 2011

Period	Union Status								Total
	Married	Common Law union	Visiting partner	Separated but not in a union	Widowed and not in a union	Divorced and not in a union	Not in a union	Other Don't Know/Not stated	
2001	26.9	14.6	7.6	7.1	0.0	0.0	43.3	0.5	100.0
2011	26.5	18.4	2.4	0.7	3.4	0.4	47.6	0.7	100.0
2011 National	24.6	11.7	7.6	0.7	4.3	1.7	46.3	3.0	100.0

Sources: 2001 and 2011 Population and Housing Censuses

TABLE 11. POPULATION 15 YEARS AND OVER BY MARITAL STATUS

Marital Status						
Sex	Married	Widowed and Not In a Union	Divorced and Not in Union	Never Married	Other Don't Know /Not Stated	Total
Total	451	51	6	968	25	1501
% Total	30.0	3.4	0.4	64.5	1.7	100.0
Male	236	12	4	605	10	867
% Male	15.7	0.8	0.3	40.3	0.7	57.8
Female	215	39	2	363	14	633
% Female	14.3	2.6	0.1	24.2	0.9	42.2

Source: 2011 Population and Housing Census

TABLE 11.1. PERCENTAGE POPULATION 15 YEARS AND OVER BY MARITAL STATUS 2001 AND 2011

Marital Status							
Period	Married	Legally Separated	Widowed and Not In a Union	Divorced and Not in Union	Never Married	Other Don't Know /Not Stated	Total
2001	29.7	0.0	4.9	0.5	63.9	1.0	100.0
2011	30.0	0.0	3.4	0.4	64.5	1.7	100.0
2011 National	28.4	0.2	4.3	1.7	63.0	2.4	100.0

Sources: 2001 and 2011 Population and Housing Censuses

TABLE 12. POPULATION 15 YEARS AND OVER BY ECONOMIC ACTIVITY FOR THE PAST WEEK.

Age Group	Employed	Seeker	Home duties	Attended School	Retired	Other Not stated	Total
Total							
15-19	27	33	14	129	0	12	215
20-24	85	31	24	20	0	4	164
25-29	67	17	14	9	0	6	113
30-34	77	16	21	0	0	3	117
35-39	95	12	21	0	0	5	133
40-44	100	12	24	0	0	10	146
45-49	91	9	18	0	0	7	125
50-54	93	2	19	0	0	7	121
55-59	54	4	16	0	0	6	80
60+	127	1	48	0	52	60	288
Total	816	137	219	158	52	119	1501
Male							
15-19	23	25	3	70	0	8	129
20-24	48	25	3	5	0	1	82
25-29	46	11	3	3	0	4	67
30-34	48	9	3	0	0	1	61
35-39	68	9	3	0	0	3	83
40-44	66	10	2	0	0	5	83
45-49	61	5	6	0	0	7	79
50-54	66	2	4	0	0	5	77
55-59	38	4	6	0	0	3	51
60+	100	1	9	0	23	23	156
Total	564	101	42	78	23	60	868
Female							
15-19	4	8	11	59	0	4	86
20-24	37	6	21	15	0	3	82
25-29	21	6	11	6	0	2	46
30-34	29	7	18	0	0	2	56
35-39	27	3	18	0	0	2	50
40-44	34	2	22	0	0	5	63
45-49	30	4	12	0	0	0	46
50-54	27	0	15	0	0	2	44
55-59	16	0	10	0	0	3	29
60+	27	0	39	0	29	37	132
Total	252	36	177	80	29	59	633

Source: 2011 Population and Housing Census

TABLE 13. POPULATION 15 YEARS AND OVER BY ECONOMIC ACTIVITY FOR THE PAST WEEK, COMPARED TO 2001 CENSUS

Age Group	Non Institutional Population 15 years and Over	Total labour Force	Unemployed	Participation Rate	Unemployment Rate	Not In labour Force
Total						
15-19	215	60	33	27.9	55.0	155
20-24	164	116	31	70.7	26.7	48
25-29	113	84	17	74.3	20.2	29
30-34	117	93	16	79.5	17.2	24
35-39	133	107	12	80.5	11.2	26
40-44	146	112	12	76.7	10.7	34
45-49	125	100	9	80.0	9.0	25
50-54	121	95	2	78.5	2.1	26
55-59	80	58	4	72.5	6.9	22
60+	288	128	1	44.4	0.8	160
Total 2011	1502	953	137	63.4	14.4	549
Total 2001	1480	890	68	60.1	7.6	590
Male						
15-19	129	48	25	37.2	52.1	81
20-24	82	73	25	89.0	34.2	9
25-29	67	57	11	85.1	19.3	10
30-34	61	57	9	93.4	15.8	4
35-39	83	77	9	92.8	11.7	6
40-44	83	76	10	91.6	13.2	7
45-49	79	66	5	83.5	7.6	13
50-54	77	68	2	88.3	2.9	9
55-59	51	42	4	82.4	9.5	9
60+	156	101	1	64.7	1.0	55
Total 2011	868	665	101	76.6	15.2	203
Total 2001	847	631	50	74.5	7.9	216
Female						
15-19	86	12	8	14.0	66.7	74
20-24	82	43	6	52.4	14.0	39
25-29	46	27	6	58.7	22.2	19
30-34	56	36	7	64.3	19.4	20
35-39	50	30	3	60.0	10.0	20
40-44	63	36	2	57.1	5.6	27
45-49	46	34	4	73.9	11.8	12
50-54	44	27	0	61.4	0.0	17
55-59	29	16	0	55.2	0.0	13
60+	132	27	0	20.5	0.0	105
Total 2011	634	288	36	45.4	12.5	346
Total 2001	633	259	18	40.9	6.9	374

Sources: 2001 and 2011 Population and Housing Censuses

TABLE 14. EMPLOYED POPULATION 15 YEARS AND OVER BY OCCUPATIONAL GROUP FOR THE PAST WEEK, COMPARED TO 2001 CENSUS AND 2011 NATIONAL EMPLOYED POPULATION

Occupation	Kalinago Territory							2011 National Employed Population
							2001 Total Employed	
	Male		Female		Total			
	No.	%	No.	%	No.	%	%	%
Legislators, Senior Officials, Managers And Professionals	25	3.1	45	5.5	70	8.6	2.7	12.1
Technicians and Associated Professionals	10	1.2	9	1.1	19	2.3	6.3	10.3
Clerks, Service Workers and Shop Sales Workers	48	5.9	90	11.0	138	16.9	7.9	29.0
Skilled Agricultural, Forestry and Fishery Workers	293	35.9	37	4.5	330	40.4	43.8	14.5
Craft Related Workers and Plant, Machine Operators and Assemblers	127	15.6	49	6.0	176	21.6	22.6	21.1
Elementary Occupations	61	7.5	22	2.7	83	10.2	16.7	11.8
Not Stated	1.1
Total	564	100.0	252	100.0	816	100.0	100.0	100.0

Sources: 2001 and 2011 Population and Housing Censuses

Notes: % of Total Employed

No. : Number

TABLE 15. EMPLOYED POPULATION 15 YEARS AND OVER BY INDUSTRIAL GROUP FOR THE PAST WEEK, COMPARED TO 2001 CENSUS AND 2011 NATIONAL EMPLOYED POPULATION

Industry	Kalinago Territory							2011 National Employed Population
	Male		Female		Total		2001 Total Employed	
	No.	%	No.	%	No.	%	%	%
Agriculture, Forestry, and Fishing	312	38.2	40	4.9	352	43.1	50.9	15.3
Manufacturing	27	3.3	47	5.8	74	9.1	14.1	4.1
Construction	62	7.6	2	0.2	64	7.8	3.8	10.6
Wholesale and Retail Trade	45	5.5	40	4.9	85	10.4	7.5	15.6
Transportation Storage and Accommodation and food service activities	25	3.1	19	2.3	44	5.4	6.8	11.4
Administrative and support service activities	13	1.6	13	1.6	26	3.2	...	4.5
Public Administration and defence compulsory Social Security	35	4.3	13	1.6	48	5.9	7.7	8.9
Education	12	1.5	34	4.2	46	5.6	3.9	7.2
Human Health and Social Work Activities	3	0.4	20	2.5	23	2.8	...	4.1
Arts Entertainment and Recreation	13	1.6	4	0.5	17	2.1	...	1.0
Other Service Activities	4	0.5	0	0.0	4	0.5	...	2.5
Activities of households as employers	2	0.2	17	2.1	19	2.3	...	3.2
Other	11	1.3	3	0.4	14	1.7	5.4	11.6
Total	564	100.0	252	100.0	816	100.0	100.0	100.0

Sources: 2001 and 2011 Population and Housing Censuses

Notes: % of Total Employed

No. : Number

TABLE 16. DISTRIBUTION OF HOUSEHOLDS BY AREA AND MAIN SOURCE OF WATER SUPPLY

Communities	Water Supply					Total
	Private catchment, piped Or Not piped into dwelling	Public, piped into dwelling	Public, piped into yard	Public Standpipe	Other	
Total	44	143	143	230	78	638
Crayfish River/Monkey	30	34	19	37	8	128
Gaulette River /Sim Sim	3	9	38	45	2	97
Sineku/Madjini	2	19	37	42	15	115
Salybia/Point Salybia/St Cyr	8	45	20	35	24	132
Bataca	1	36	29	71	29	166

Source: 2011 Population and Housing Census

TABLE 16.1. PERCENTAGE DISTRIBUTION OF HOUSEHOLDS BY MAIN SOURCE OF WATER SUPPLY, 2001 AND 2011

Period	Water Supply					Total
	Private catchment, piped Or Not piped into dwelling	Public, piped into dwelling	Public, piped into yard	Public Standpipe	Other/ Not Stated	
2001	3.6	1.7	28.8	31.3	34.5	100.0
2011	6.9	22.4	22.4	36.1	12.2	100.0
2011 National	6.4	66.3	7.7	14.3	5.3	100.0

Sources: 2001 and 2011 Population and Housing Censuses

TABLE 17. DISTRIBUTION OF HOUSEHOLDS BY AREA AND TYPE OF TOILET FACILITY

Communities	Type of Toilet Facility			
	W.C. (flush toilet) linked to Cess pit/Septic tank/soakaway	Pit-latrline/VIP	None/ Other	Total
Total	115	510	13	638
Crayfish River/Monkey Hill	25	103	0	128
Gaulette River /Sim Sim	14	82	1	97
Sineku/Madjini	16	97	2	115
Salybia/Point Salybia/St Cyr	23	101	8	132
Bataca	37	127	2	166

Source: 2011 Population and Housing Census

TABLE 17.1. PERCENTAGE DISTRIBUTION OF HOUSEHOLDS BY TYPE OF TOILET FACILITY, 2001 AND 2011

Period	Type of Toilet Facility			
	W.C. (flush toilet) linked to Cess pit/Septic tank/soakaway	Pit-latrline/VIP	None/ Other	Total
2001	4.7	90.2	5.2	100.0
2011	18.0	79.9	2.0	100.0
2011 National	72.4	17.0	10.5	100.0

Sources: 2001 and 2011 Population and Housing Censuses

TABLE 18. DISTRIBUTION OF HOUSEHOLDS BY AREA AND TYPE OF LIGHTING

Communities	Type of Lighting						Total
	Kerosene	Electricity - Public	Electricity - Private Generator	Gas/Solar	Other	None /Not Stated	
Total	120	442	5	5	49	17	638
Crayfish River/Monkey Hill	27	90	0	1	6	4	128
Gaulette River /Sim Sim	33	59	0	2	2	1	97
Sineku/Madjini	18	73	0	0	20	4	115
Salybia/Point Salybia/St Cyr	28	76	5	2	18	3	132
Bataca	14	144	0	0	3	5	166

Source: 2011 Population and Housing Census

**TABLE 18.1. DISTRIBUTION OF HOUSEHOLDS BY TYPE OF LIGHTING
2001 AND 2011**

Period	Type of Lighting						Total
	Kerosene	Electricity - Public	Electricity - Private Generator	Gas/Solar	Other	None/Not Stated	
2001	39.4	55.3	0.3	...	0.0	5.0	100.0
2011	18.8	69.3	0.8	0.8	7.7	2.7	100.0
2011 National	3.1	90.0	1.4	0.4	2.7	2.4	100.0

Sources: 2001 and 2011 Population and Housing Censuses

TABLE 19. DISTRIBUTION OF HOUSEHOLDS BY AREA AND TYPE OF COOKING FUEL

Communities	Type of Cooking Fuel				
	Wood	Liquid propane gas/cooking gas	Kerosene Charcoal/ Other	Not stated	Total
Total	286	329	20	3	638
Crayfish River/Monkey Hill	51	77	0	0	128
Gaulette River /Sim Sim	59	37	1	0	97
Sineku/Madjini	79	33	2	1	115
Salybia/Point Salybia/St Cyr	52	71	9	0	132
Bataca	45	111	8	2	166

Source: 2011 Population and Housing Census

TABLE 19.1. PERCENTAGE DISTRIBUTION OF HOUSEHOLDS BY TYPE OF COOKING FUEL, 2001 AND 2011

Period	Type of Cooking Fuel				
	Wood	Liquid propane gas/cooking gas	Kerosene Charcoal/ Other	Other/Not stated	Total
2001	63.2	34.4	2.4	0.0	100.0
2011	44.8	51.6	3.1	0.5	100.0
2011 National	7.2	90.6	0.5	1.7	100.0

Sources: 2001 and 2011 Population and Housing Censuses

**TABLE 20. HOUSEHOLDS HAVING ONE OR MORE SELECTED
APPLIANCES/EQUIPMENT AS COMPARED TO NATIONAL HOUSEHOLDS**

Selected Appliances	Kalinago Territory		National %
	No.	%	
Water Heater	8	1.3	26.8
Television	308	48.3	79.3
Cable TV or Satellite Service	166	26.0	67.4
VCR/DVD	225	35.3	48.8
Radio Stereo	430	67.4	65.6
Refrigerator	280	43.9	77.7
Freezer	64	10.0	15.5
Microwave Oven	30	4.7	32.3
Stove	451	70.7	92.3
Cellular Telephone	466	73.0	83.9
Fixed Telephone	50	7.8	34.8
Washing Machine	148	23.2	55.7
Laundry Dryer	17	2.7	2.6
Water Pump	3	0.5	2.0
Computer	97	15.2	38.1
One or More Motor Vehicles	64	10.0	26.9

Source: 2011 Population and Housing Census

CHART 1. POPULATION BY AGE GROUP AND SEX 2011

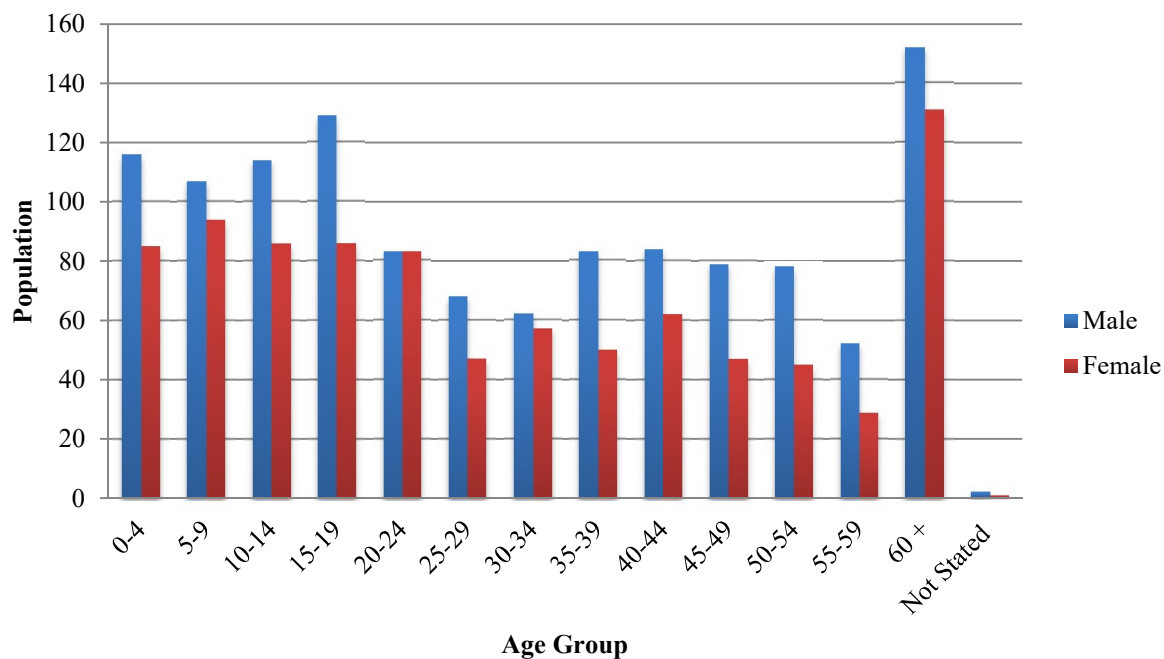


CHART 2. POPULATION BY AREA 2001 AND 2011

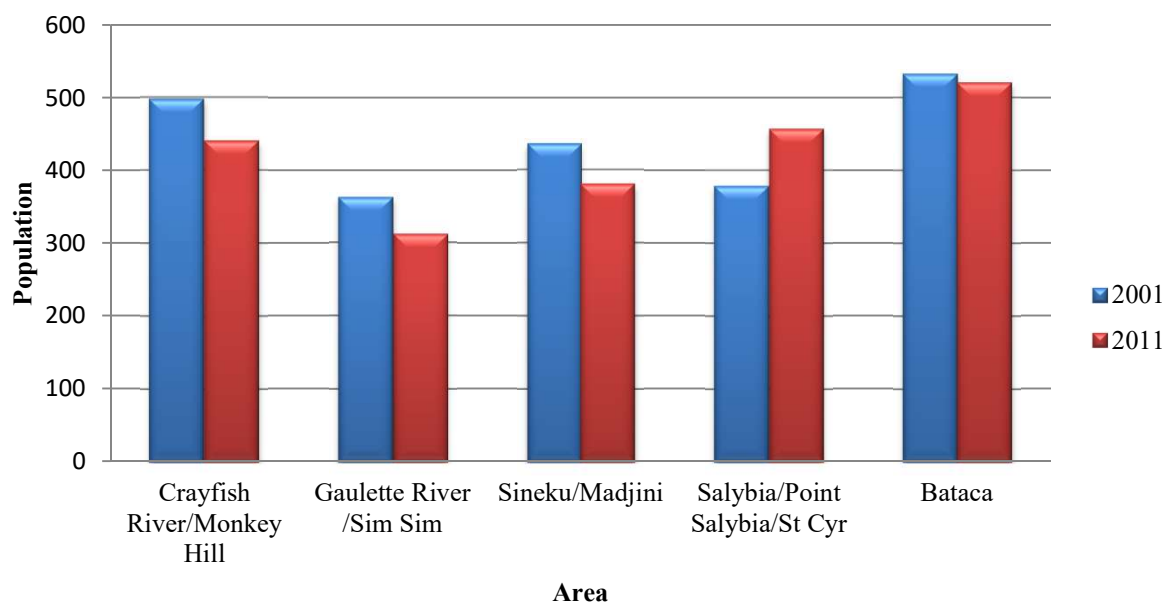


CHART 3. PERCENTAGE POPULATION BY RELIGION 2001 AND 2011

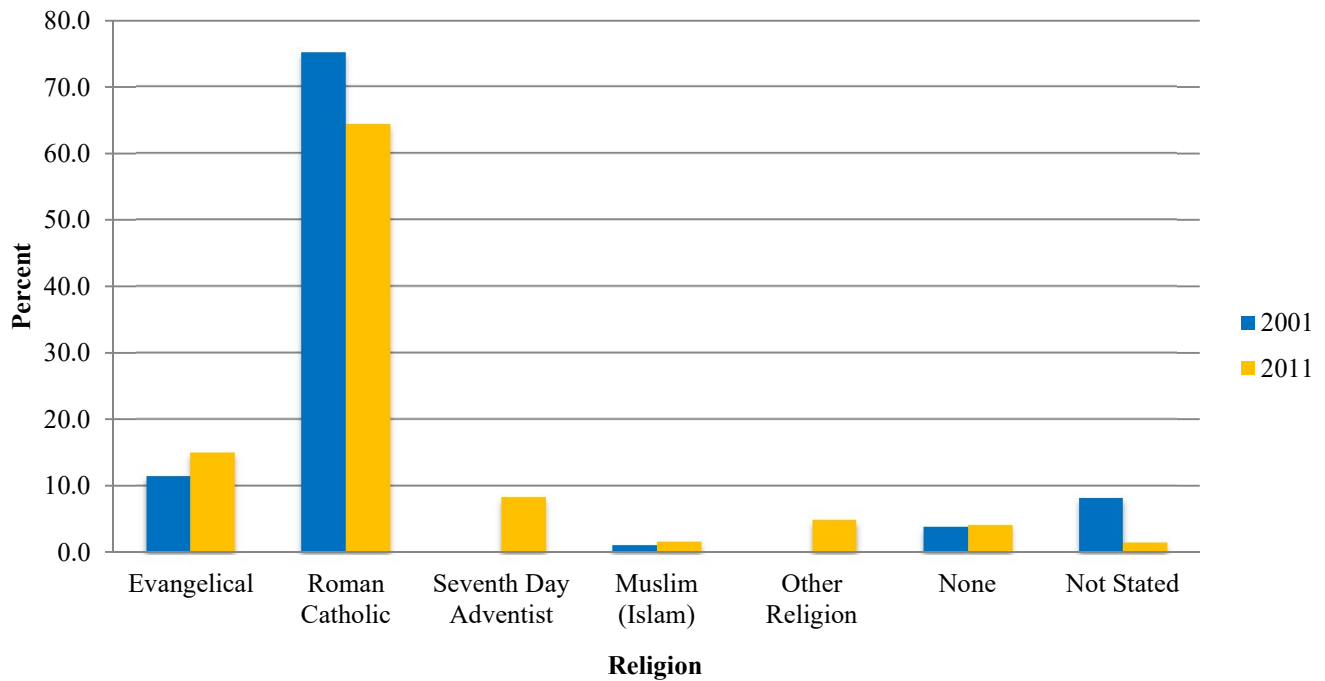


CHART 4. PERCENT DISABLED POPULATION BY TYPE OF DISABILITY COMPARED TO NATIONAL DISABLED POPULATION 2011

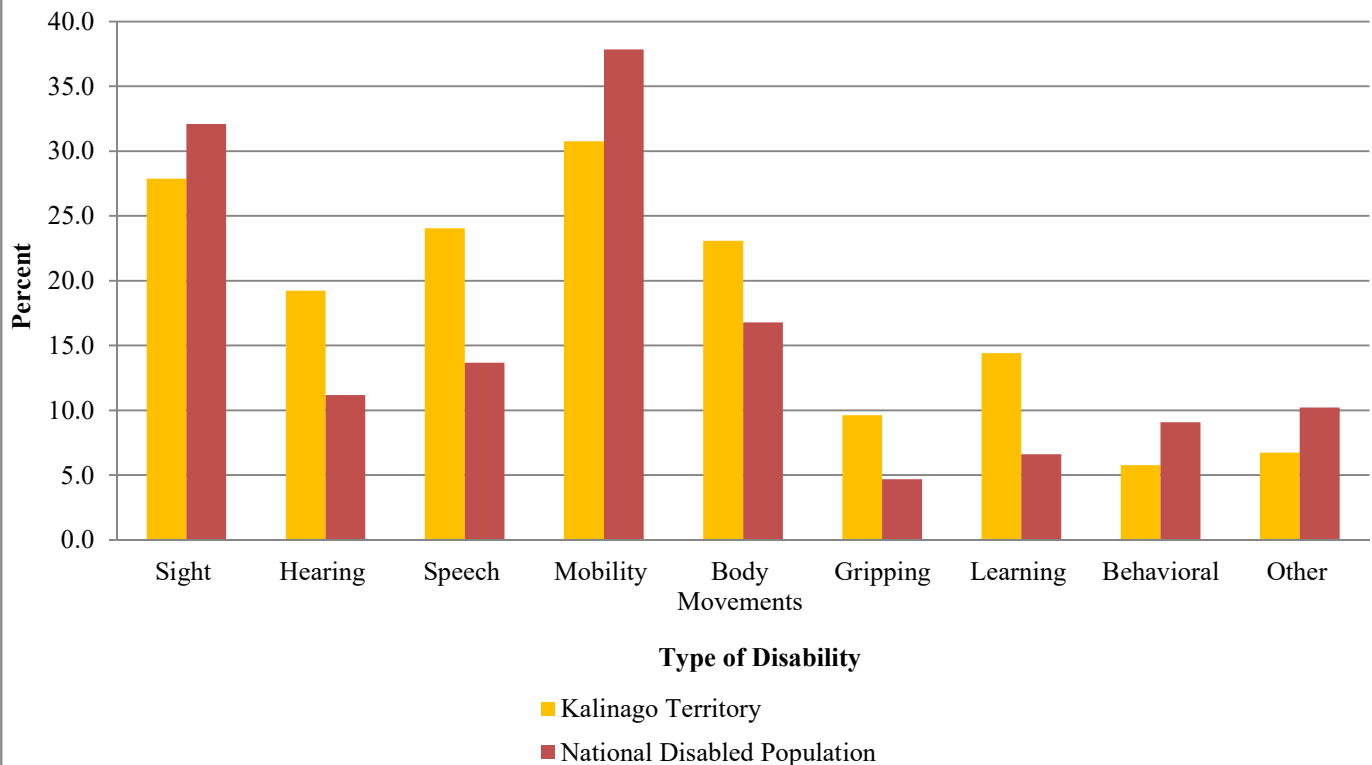


CHART 5. PERCENT POPULATION WITH CHRONIC ILLNESS COMPARED TO NATIONAL POPULATION 2011

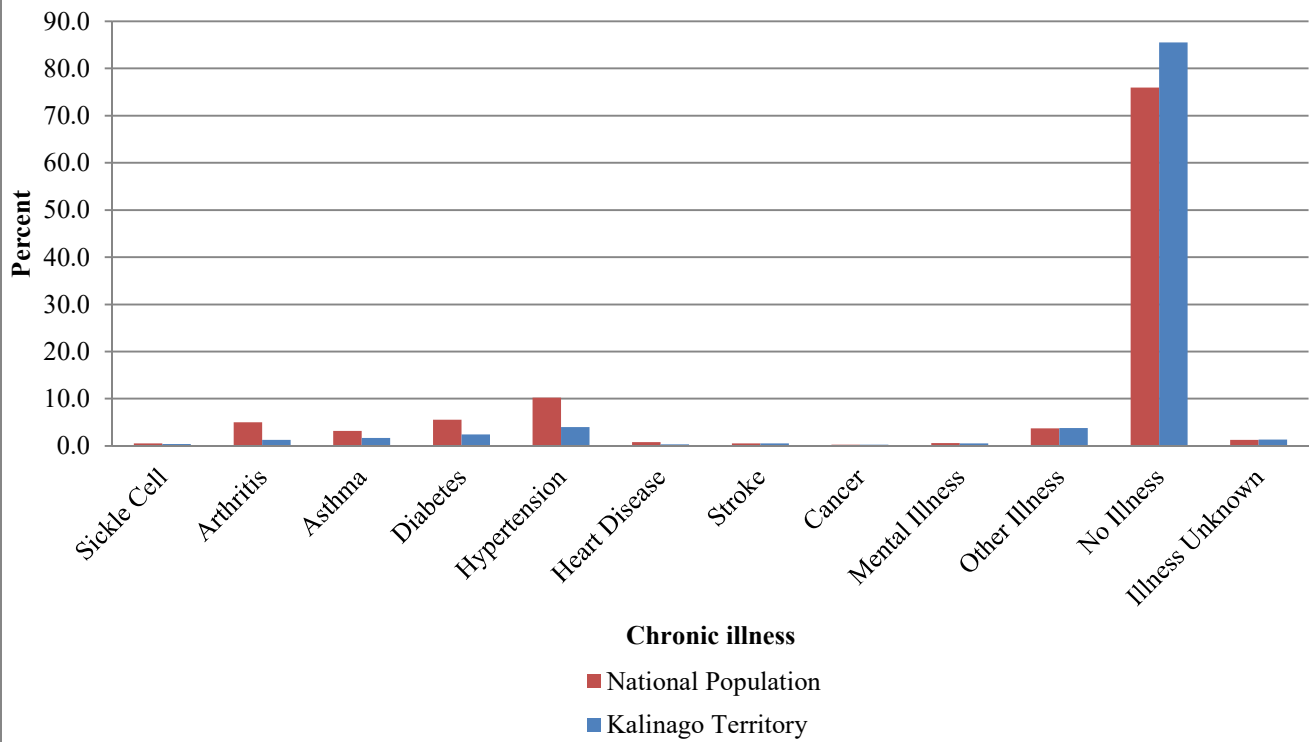
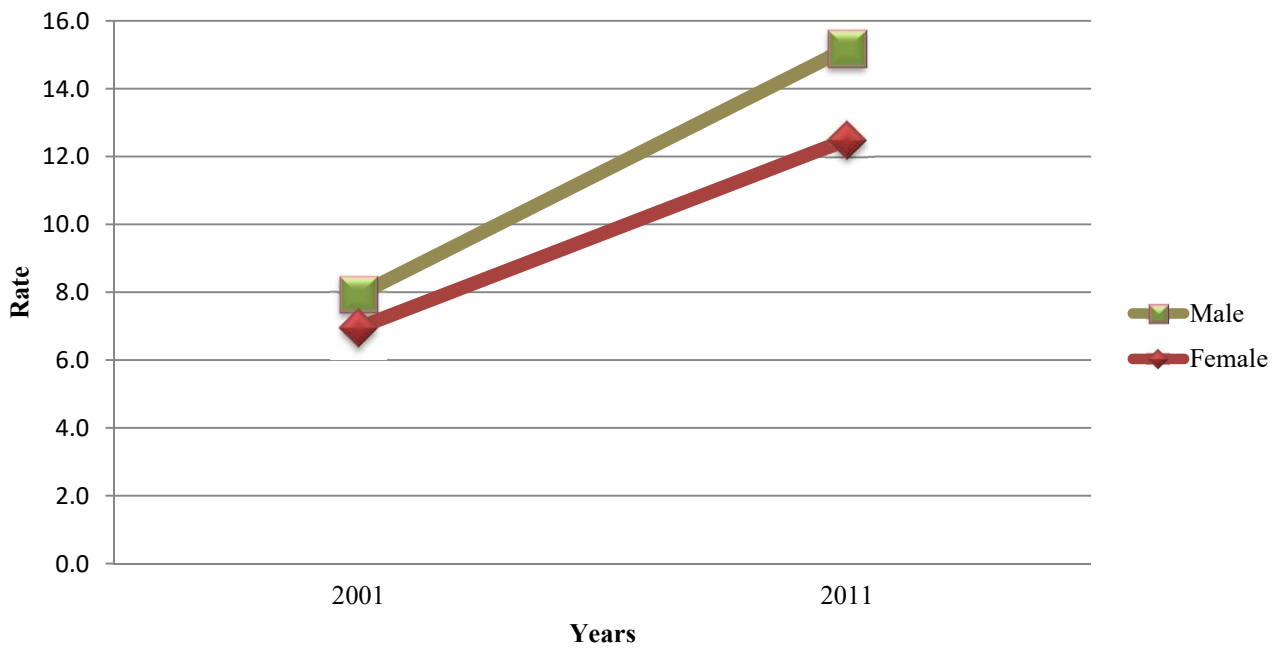
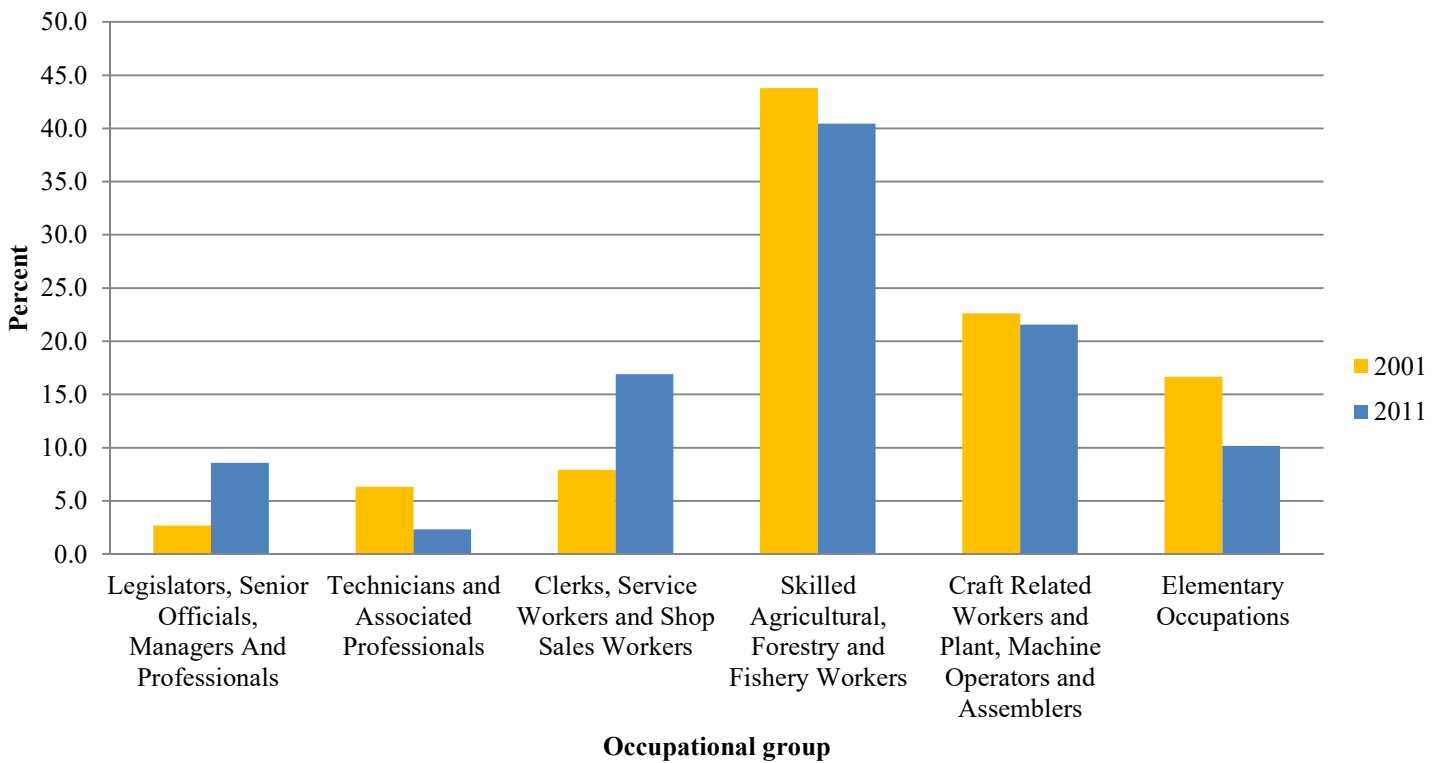


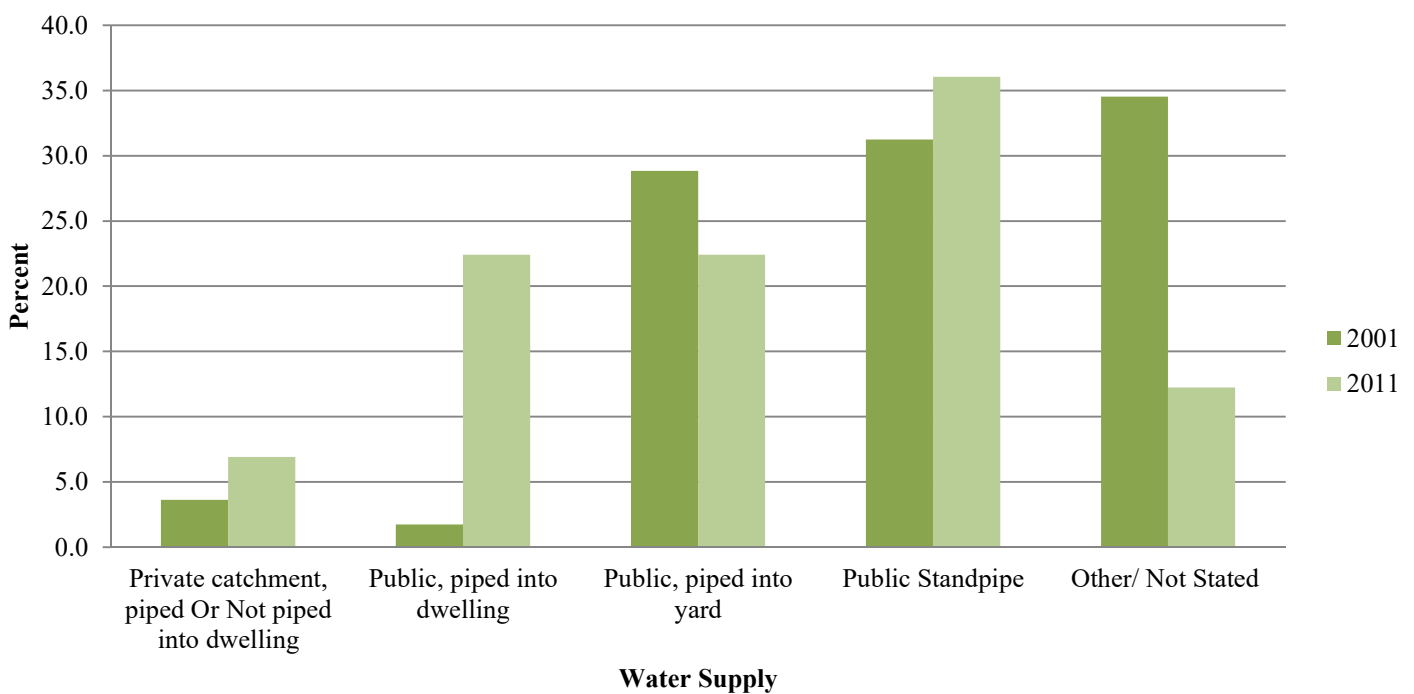
CHART 6. UNEMPLOYMENT RATE BY SEX 2001 AND 2011



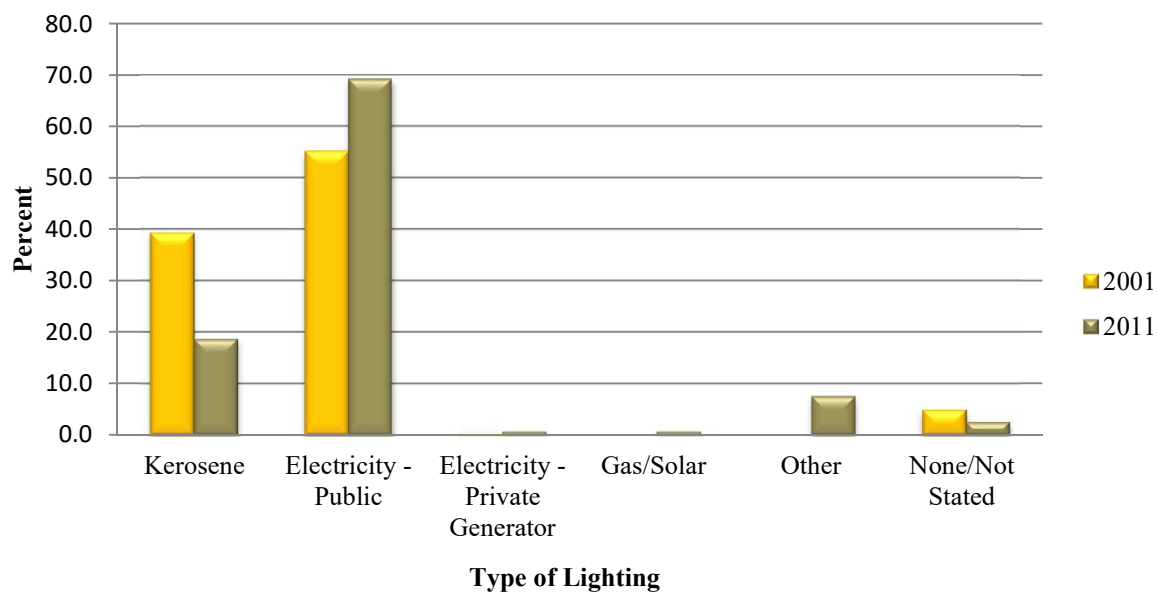
**CHART 7. PERCENT EMPLOYED POPULATION BY OCCUPATIONAL GROUP
2001 AND 2011**



**CHART 8. PERCENT HOUSEHOLDS BY MAIN SOURCE OF WATER SUPPLY
2001 AND 2011**



**CHART 9. PERCENT HOUSEHOLDS BY TYPE OF LIGHTING
2001 AND 2011**



Contact us for information on :

**External Trade Statistics
Travel Statistics
Consumer Price Index
National Accounts
Balance of Payments
Trade In Services
Population Statistics
Demographics Statistics
Environmental Statistics
Education Statistics
Gender Statistics
Social Indicators
Sustainable Development Goals
Agricultural Statistics
Production & Energy Statistics
Crime Statistics**

**Central Statistics Office
Ministry of Finance
Tel: 1-767-266-3400/3407
Email: cso@dominica.gov.dm
Price \$40.00**